

UNITED STATES
DEPARTMENT OF THE INTERIOR
BUREAU OF LAND MANAGEMENT

APPLICATION FOR PERMIT TO DRILL, DEEPEN, OR PLUG BACK

1A. TYPE OF WORK

DRILL ☒

DEEPEN ☐

PLUG BACK ☐

b. TYPE OF WELL

OIL
WELL ☐

GAS
WELL ☒

OTHER

SINGLE
ZONE ☒

MULTIPLE
ZONE ☐

2. NAME OF OPERATOR

Hixon Development Company

3. ADDRESS OF OPERATOR

P. O. Box 2810, Farmington, New Mexico 87401

4. LOCATION OF WELL (Report location clearly and in accordance with any State requirements.)*

At surface

1800' FSL and 1800' FWL

At proposed prod. zone

Section 8, T25N, R11W, NMMP

14. DISTANCE IN MILES AND DIRECTION FROM NEAREST TOWN OR POST OFFICE*

24 miles southeast of Farmington, NM

15. DISTANCE FROM PROPOSED*

LOCATION TO NEAREST
PROPERTY OR LEASE LINE, FT.
(Also to nearest drlg. unit line, if any)

1800'

16. NO. OF ACRES IN LEASE

1280.30

18. DISTANCE FROM PROPOSED LOCATION*
TO NEAREST WELL, DRILLING, COMPLETED,
OR APPLIED FOR, ON THIS LEASE, FT.

3000'

19. PROPOSED DEPTH

1400'

17. NO. OF ACRES ASSIGNED
TO THIS WELL

320

20. ROTARY OR CABLE TOOLS

Rotary

21. ELEVATIONS (Show whether DF, RT, GR, etc.)

6360' GLE

22. APPROX. DATE WORK WILL START*

February 20, 1990

This action is subject to technical and
procedural review pursuant to 43 CFR 3165.3
and appeal pursuant to 43 CFR 3165.4.

PROPOSED CASING AND CEMENTING PROGRAM

DRILLING OPERATIONS AUTHORIZED ARE
SUBJECT TO COMPLIANCE WITH ATTACHED

SIZE OF HOLE	SIZE OF CASING	WEIGHT PER FOOT	SETTING DEPTH
8-3/4"	7"	20#	110'
6-1/4"	4-1/2"	10.5#	1400'

"GENERAL REQUIREMENTS"

60 sks (1.18 ft³/sk)

cmt to surface

165 sks cmt to surface

(85 sks - 2.06 ft³/sk)

(80 sks - 1.18 ft³/sk)

It is proposed to drill the subject Basin Fruitland Coal Well. It
will be evaluated on the basis of open hole logs. Please see
attached Onshore Oil and Gas Order No. 1 data.

RECEIVED
MAR 9 1990
OIL CON. DIV.
DIST. 3

IN ABOVE SPACE DESCRIBE PROPOSED PROGRAM: If proposal is to deepen or plug back, give data on present productive zone and proposed new productive zone. If proposal is to drill or deepen directionally, give pertinent data on subsurface locations and measured and true vertical depths. Give blowout preventer program, if any.

24.

SIGNED

John C. Corbett

TITLE Vice President-Exploration

DATE January 22, 1990

(This space for Federal or State office use)

PERMIT NO.

APPROVAL DATE

APPROVED BY

TITLE

CONDITIONS OF APPROVAL, IF ANY:

**APPROVED
AS AMENDED**

MAR 15 1990

AREA MANAGER

*See Instructions On Reverse Side

REVISED

1960

OFF. COPIES

2.100

DISTRICT I
P.O. Box 1980, Hobbs, NM 88240

DISTRICT II
P.O. Drawer DD, Artesia, NM 88210

DISTRICT III
1000 Rio Brazos Rd., Aztec, NM 87410

OIL CONSERVATION DIVISION
P.O. Box 2088
Santa Fe, New Mexico 87504-2088

WELL LOCATION AND ACREAGE DEDICATION PLAT

All Distances must be from the outer boundaries of the section

Operator Hixon Development Company			Lease East Bisti Coal 8		Well No. 2
Unit Letter K	Section 8	Township 25 North	Range 11 West	County San Juan	
Actual Footage Location of Well: 1800 feet from the South line and 1800 feet from the West line					
Ground level Elev. 6360	Producing Formation Fruitland	Pool Basin Fruitland Coal	Dedicated Acreage: 320 Acres		
1. Outline the acreage dedicated to the subject well by colored pencil or hatchure marks on the plat below.					
2. If more than one lease is dedicated to the well, outline each and identify the ownership thereof (both as to working interest and royalty).					
3. If more than one lease of different ownership is dedicated to the well, have the interest of all owners been consolidated by communitization, unitization, force-pooling, etc.? <input type="checkbox"/> Yes <input type="checkbox"/> No If answer is "yes" type of consolidation _____					
If answer is "no" list the owners and tract descriptions which have actually been consolidated. (Use reverse side of this form if necessary.)					
No allowable will be assigned to the well until all interests have been consolidated (by communitization, unitization, forced-pooling, or otherwise) or until a non-standard unit, eliminating such interest, has been approved by the Division.					

OPERATOR CERTIFICATION

I hereby certify that the information contained herein is true and complete to the best of my knowledge and belief.

Signature
John C. Corbett
Printed Name
John C. Corbett
Position
Vice President-Exploration
Company
Hixon Development Company
Date
January 16, 1990

SURVEYOR CERTIFICATION

I hereby certify that the well location shown on this plat was plotted from field notes of actual surveys made by me or under my supervision, and that the same is true and correct to the best of my knowledge and belief.

Date Surveyed
January 9, 1990

Signature & Seal of
Professional Surveyor

EDGAR L. RISENHOVER
NEW MEXICO
15970
Certificate No. 5999
Edgar L. Risenhoover

RECEIVED
JAN 26 1990
BUREAU OF LAND MANAGEMENT
FARMINGTON RESOURCE AREA

(CONTROL)
C.U. 41-18 and
SW Cor. Sec. 8.

RECEIVED
MAR 9 1990
OIL CON. DIV.
DIST. 3

RECEIVED
JAN 26 1990

BUREAU OF LAND MANAGEMENT
FARMINGTON RESOURCE AREA

Section 8

1800'

1800'

SF-078062-A

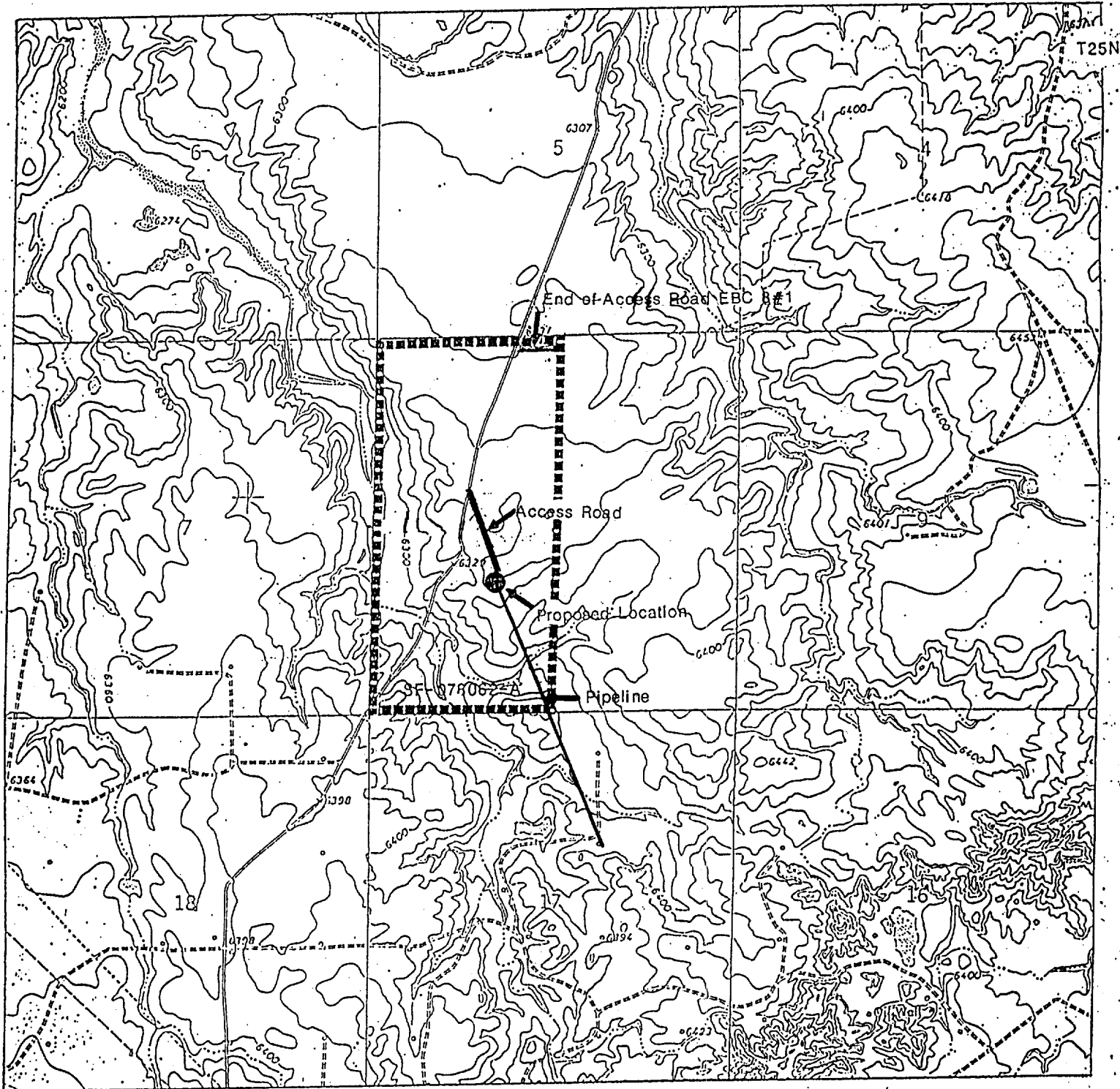
0 330 660 990 1320 1650 1980 2310 2640 2000 1500 1000 500 0

391993

0001 6 19474

1. VIO 1400 110
2. 120

R 11 W



HIXON DEVELOPMENT COMPANY
East Blstl Coal B # 2

1800' FSL 1800' FWL

Section 8, T25N, R11W

SAN JUAN COUNTY, NEW MEXICO