

UNITED STATES
DEPARTMENT OF THE INTERIOR
BUREAU OF LAND MANAGEMENT

APPLICATION FOR PERMIT TO DRILL, DEEPEN, OR PLUG BACK

1a. TYPE OF WORK

DRILL ☒

DEEPEN ☐

PLUG BACK ☐

b. TYPE OF WELL

OIL
WELL ☐

GAS
WELL ☒

OTHER

SINGLE
ZONE ☐

MULTIPLE
ZONE ☐

2. NAME OF OPERATOR

Hixon Development Company

3. ADDRESS OF OPERATOR

P. O. Box 2810, Farmington, New Mexico 87401

4. LOCATION OF WELL (Report location clearly and in accordance with any State requirements.)*

At surface

1680' FSL and 800' FWL

At proposed prod. zone

Section 16, T25N, R11W, NMPM

14. DISTANCE IN MILES AND DIRECTION FROM NEAREST TOWN OR POST OFFICE*

23 miles southeast of Farmington, NM

15. DISTANCE FROM PROPOSED*

LOCATION TO NEAREST
PROPERTY OR LEASE LINE, FT.
(Also to nearest drlg. unit line, if any)

800'

16. NO. OF ACRES IN LEASE

600.00

17. NO. OF ACRES ASSIGNED
TO THIS WELL

W/ 320

18. DISTANCE FROM PROPOSED LOCATION*

TO NEAREST WELL, DRILLING, COMPLETED,
OR APPLIED FOR, ON THIS LEASE, FT.

400'

19. PROPOSED DEPTH

1400'

20. ROTARY OR CABLE TOOLS

Rotary

21. ELEVATIONS (Show whether DF, RT, GR, etc.)

6423' GLE

22. APPROX. DATE WORK WILL START*

February 20, 1990

PROPOSED CASING AND CEMENTING PROGRAM

SIZE OF HOLE	SIZE OF CASING	WEIGHT PER FOOT	SETTING DEPTH
8-3/4"	7"	20#	110'
6-1/4"	4-1/2"	10.5#	1400'

DRILLING OPERATIONS AUTHORIZED ARE
SUBJECT TO QUANTITY OF CEMENT ATTACHED

60 sks (1.18 ft³/sk)

cmt to surface

165 sks cmt to surface

(85 sks - 2.06 ft³/sk)

(80 sks - 1.18 ft³/sk)

It is proposed to drill the subject Basin Fruitland Coal Well. It will be evaluated on the basis of open hole logs. Please see attached Onshore Oil and Gas Order No. 1 data.

RECEIVED

MAR 9 1990

OIL CON. DIV.
DIST. 3

IN ABOVE SPACE DESCRIBE PROPOSED PROGRAM: If proposal is to deepen or plug back, give data on present productive zone and proposed new productive zone. If proposal is to drill or deepen directionally, give pertinent data on subsurface locations and measured and true vertical depths. Give blowout preventer program, if any.

SIGNED John C. Corbett

TITLE Vice President-Exploration

DATE January 22, 1990

(This space for Federal or State office use)

PERMIT NO. _____

APPROVAL DATE _____

APPROVED BY _____
CONDITIONS OF APPROVAL, IF ANY:

TITLE _____

APPROVED
AS AMENDED

MAR 15 1990

AREA MANAGER

*See Instructions On Reverse Side

RECEIVED

APR 10 1963

OIL CON. DIV.

DET. 2

Submit to Appropriate
District Office
State Lease - 4 copies
Fee Lease - 3 copies

State of New Mexico
Energy, Minerals and Natural Resources Department

Form C-102
Revised 1-1-89

OIL CONSERVATION DIVISION

P.O. Box 2088
Santa Fe, New Mexico 87504-2088

DISTRICT I
P.O. Box 1980, Hobbs, NM 88240

DISTRICT II
P.O. Drawer DD, Artesia, NM 88210

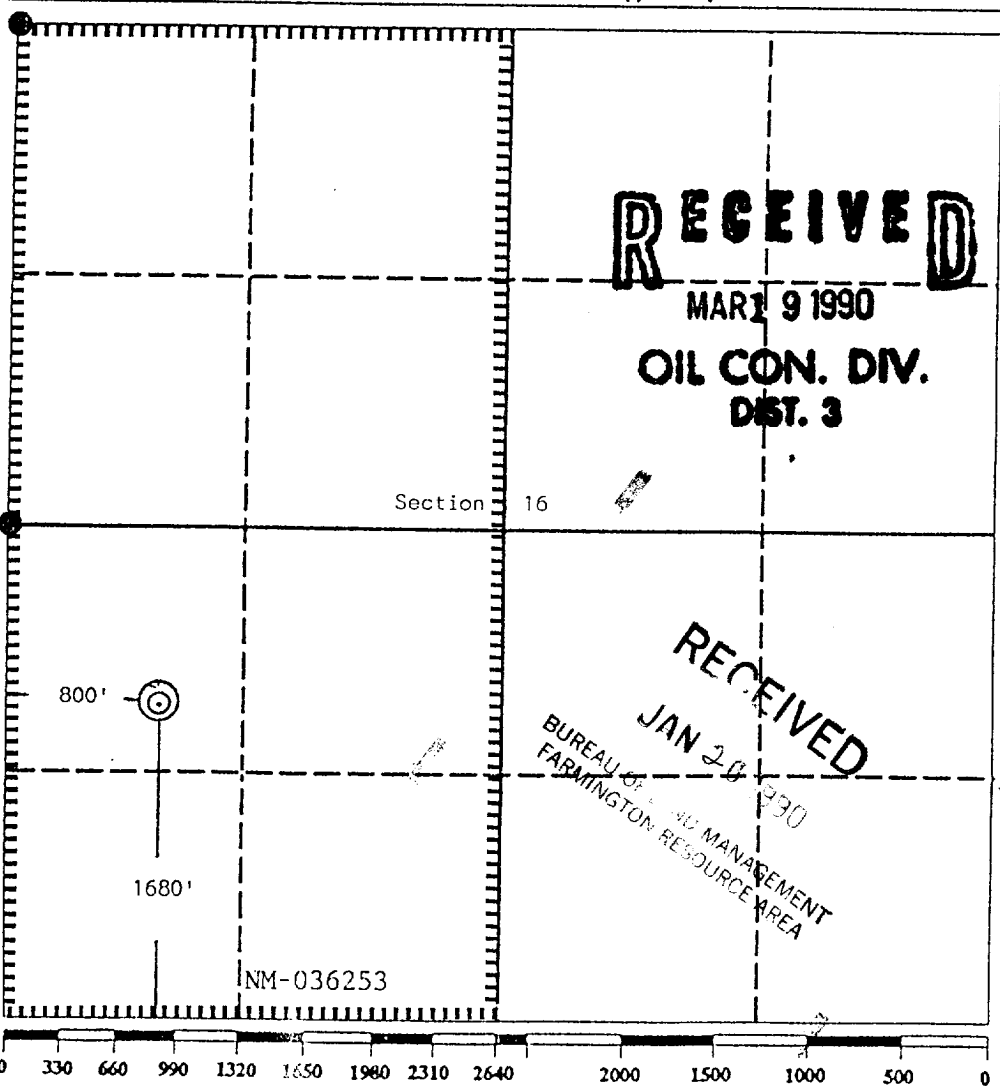
DISTRICT III
1000 Rio Brazos Rd., Aztec, NM 87410

WELL LOCATION AND ACREAGE DEDICATION PLAT

All Distances must be from the outer boundaries of the section

Operator Hixon Development Company			Lease East Bisti Coal 16		Well No. 2
Unit Letter L	Section 16	Township 25 North	Range 11 West	County San Juan	
Actual Footage Location of Well: 1680 feet from the South line and 800 feet from the West line					
Ground level Elev. 6423	Producing Formation Fruitland		Pool Basin Fruitland Coal	Dedicated Acreage: 320 Acres	

- Outline the acreage dedicated to the subject well by colored pencil or hatchure marks on the plat below.
- If more than one lease is dedicated to the well, outline each and identify the ownership thereof (both as to working interest and royalty).
- If more than one lease of different ownership is dedicated to the well, have the interest of all owners been consolidated by communitization, unitization, force-pooling, etc.?
☐ Yes ☐ No If answer is "yes" type of consolidation _____
If answer is "no" list the owners and tract descriptions which have actually been consolidated. (Use reverse side of this form if necessary). _____
No allowable will be assigned to the well until all interests have been consolidated (by communitization, unitization, forced-pooling, or otherwise) or until a non-standard unit, eliminating such interest, has been approved by the Division.



OPERATOR CERTIFICATION

I hereby certify that the information contained herein is true and complete to the best of my knowledge and belief.

Signature
John C. Corbett
Printed Name
John C. Corbett
Position
Vice President-Exploration
Company
Hixon Development Company
Date
January 19, 1990

SURVEYOR CERTIFICATION

I hereby certify that the well location shown on this plat was plotted from field notes of actual surveys made by me or under my supervision, and that the same is true and correct to the best of my knowledge and belief.

Date Surveyed
January 12, 1990

Signature & Seal
Professional Surveyor
Edgar L. Risenhoover
Certificate No. 5979
Edgar L. Risenhoover
REGISTERED LAND SURVEYOR
NEW MEXICO

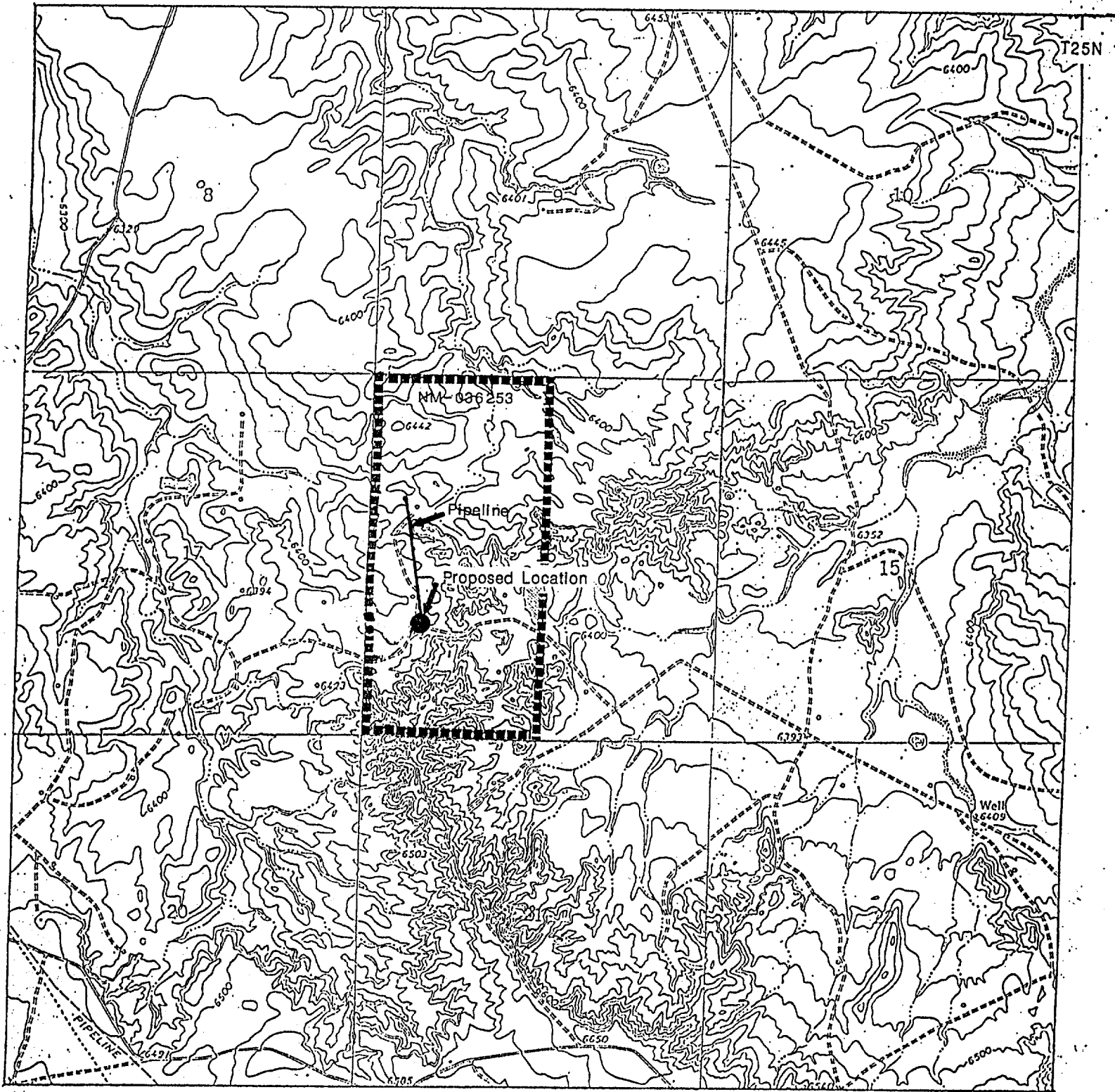
RECEIVED

NOV 19 1961

OIL CON. DIV.
OCT. 9

R 11 W

T25N



Hixon Development Company

East Blstl Coal 16 # 2

1680' FSL 800' FWL

Section 16, T25N, R11W
San Juan County, New Mexico