

UNITED STATES
DEPARTMENT OF THE INTERIOR
BUREAU OF LAND MANAGEMENT

APPLICATION FOR PERMIT TO DRILL, DEEPEN, OR PLUG BACK

1a. TYPE OF WORK

DRILL ☒

DEEPEN ☐

PLUG BACK ☐

b. TYPE OF WELL

OIL
WELL ☒

GAS
WELL ☐

OTHER

SINGLE
ZONE ☐

MULTIPLE
ZONE ☐

2. NAME OF OPERATOR

HIXON DEVELOPMENT COMPANY

3. ADDRESS OF OPERATOR

P. O. Box 2810, Farmington, New Mexico 87499

4. LOCATION OF WELL (Report location clearly and in accordance with any State requirements.)*

At surface

1900' FNL, 990' FEL, Sec 21, T25N, R12W, NMPM

At proposed prod. zone

14. DISTANCE IN MILES AND DIRECTION FROM NEAREST TOWN OR POST OFFICE*

24 miles south of Farmington, New Mexico

15. DISTANCE FROM PROPOSED*

LOCATION TO NEAREST
PROPERTY OR LEASE LINE, FT.
(Also to nearest drlg. unit line, if any)

580'

18. DISTANCE FROM PROPOSED LOCATION*
TO NEAREST WELL, DRILLING, COMPLETED,
OR APPLIED FOR, ON THIS LEASE, FT.

1640'

21. ELEVATIONS (Show whether DF, RT, GR, etc.)

6278' GLE

16. NO. OF ACRES IN LEASE

440.200

17. NO. OF ACRES ASSIGNED
TO THIS WELL

5/80

19. PROPOSED DEPTH

5000'

20. ROTARY OR CABLE TOOLS

Rotary

22. APPROX. DATE WORK WILL START*

April 19, 1990

DRILLING OPERATIONS AUTHORIZED ARE
SUBJECT TO COMPLIANCE WITH ATTACHED
"GENERAL REQUIREMENTS"

PROPOSED CASING AND CEMENTING PROGRAMS action is subject to technical and
procedural review pursuant to 43 CFR 3165.3
and appeal pursuant to 43 CFR 3165.4.

SIZE OF HOLE	SIZE OF CASING	WEIGHT PER FOOT	SETTING DEPTH	QUANTITY OF CASING
12-1/4	8-5/8	24#	320	250 sks
7-7/8	5-1/2	15.5#	5000	600 sks

It is proposed to drill the subject Bisti Lower Gallup oil well. This well will be evaluated on the basis of open hole logs. Please see attached Onshore Oil and Gas Order No. 1 data.

RECEIVED
MAY 07 1990
OIL CON. DIV.
DIST. 3

IN ABOVE SPACE DESCRIBE PROPOSED PROGRAM: If proposal is to deepen or plug back, give data on present productive zone and proposed new productive zone. If proposal is to drill or deepen directionally, give pertinent data on subsurface locations and measured and true vertical depths. Give blowout preventer program, if any.

SIGNED John C. Corbett TITLE Vice President-Exploration DATE March 22, 1990

(This space for Federal or State office use)

PERMIT NO. _____ APPROVAL DATE _____

APPROVED BY _____ TITLE _____

CONDITIONS OF APPROVAL, IF ANY:

APPROVED
AS AMENDED

MAY 04 1990
AREA MANAGER

*See Instructions On Reverse Side

RECEIVED

MAY 03 1933

OIL COM. DIV.
DIST. 3

Submit to Appropriate
District Office
State Lease - 4 copies
Fee Lease - 3 copies

State of New Mexico
Energy, Minerals and Natural Resources Department

Form C-102
Revised 1-1-89

OIL CONSERVATION DIVISION

P.O. Box 2088

Santa Fe, New Mexico 87504-2088

DISTRICT I
P.O. Box 1980, Hobbs, NM 88240

DISTRICT II
P.O. Drawer DD, Artesia, NM 88210

DISTRICT III
1000 Rio Brazos Rd., Aztec, NM 87410

WELL LOCATION AND ACREAGE DEDICATION PLAT

All Distances must be from the outer boundaries of the section

Operator HIXON DEVELOPMENT COMPANY			Lease <i>South Bisti H</i>		Well No. South Bisti # 21-H
Unit Letter H	Section 21	Township 25 North	Range 12 West	County San Juan	

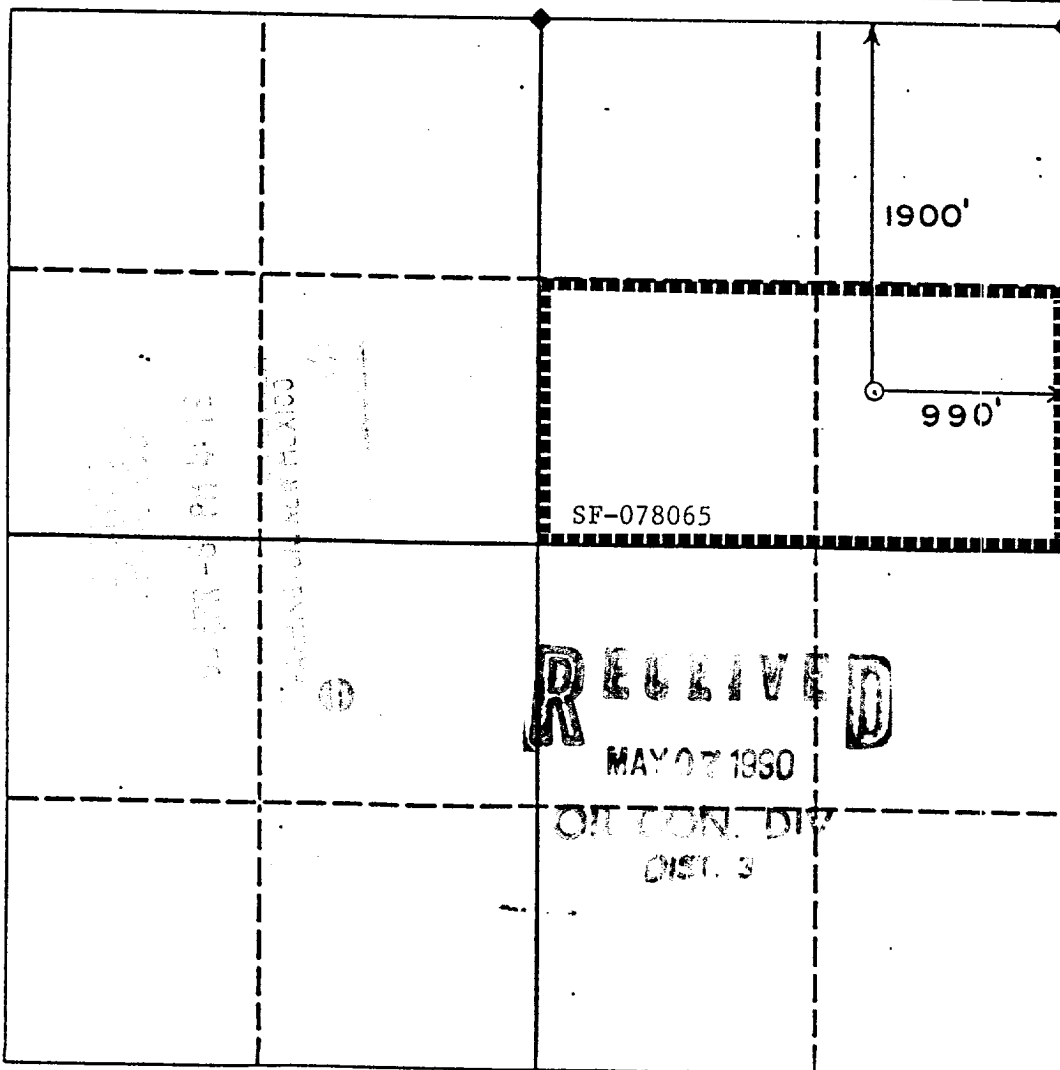
Actual Footage Location of Well:

1900 feet from the North line and		990 feet from the East line	
Ground level Elev. 6278'	Producing Formation Gallup	Pool Bisti Lower Gallup	Dedicated Acreage: 80 Acres

1. Outline the acreage dedicated to the subject well by colored pencil or hatchure marks on the plat below.
2. If more than one lease is dedicated to the well, outline each and identify the ownership thereof (both as to working interest and royalty).
3. If more than one lease of different ownership is dedicated to the well, have the interest of all owners been consolidated by communitization, unitization, force-pooling, etc.?
☐ Yes ☐ No If answer is "yes" type of consolidation _____

If answer is "no" list the owners and tract descriptions which have actually been consolidated. (Use reverse side of this form if necessary.) _____

No allowable will be assigned to the well until all interests have been consolidated (by communitization, unitization, forced-pooling, or otherwise) or until a non-standard unit, eliminating such interest, has been approved by the Division.



OPERATOR CERTIFICATION

I hereby certify that the information contained herein is true and complete to the best of my knowledge and belief.

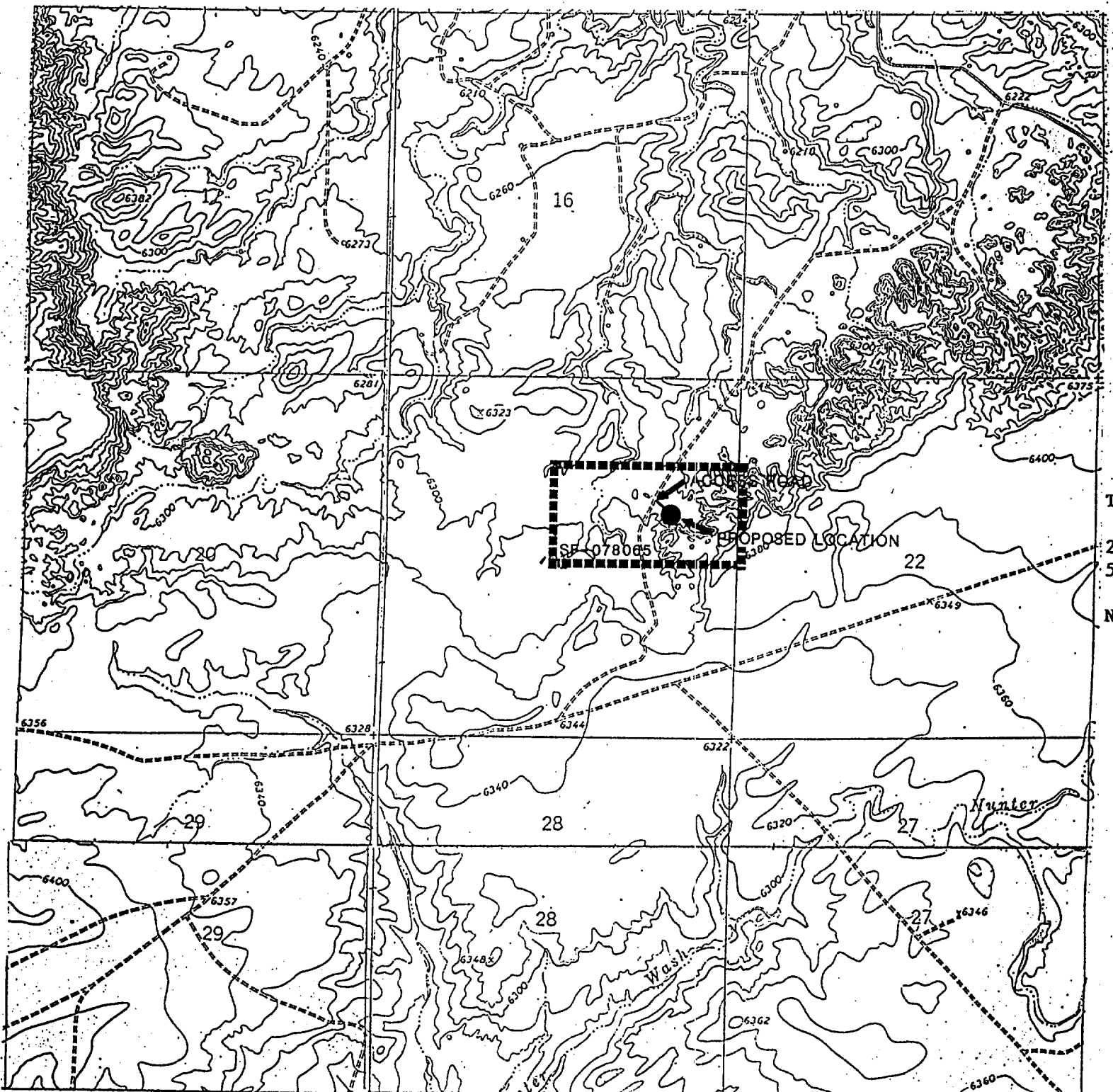
Signature
John C. Corbett
Printed Name
John C. Corbett
Position
Vice President-Exploration
Company
Hixon Development Company
Date
March 1, 1990

SURVEYOR CERTIFICATION

I hereby certify that the well location shown on this plat was plotted from field notes of actual surveys made by me or under my supervision, and that the same is true and correct to the best of my knowledge and belief.

Date Surveyed
1-21-'90
Signature & Seal of Professional Surveyor
Charles J. Huddleston
Certification
CHARLES J. HUDDLESTON
NEW MEXICO
6844
REGISTERED PROFESSIONAL SURVEYOR

R 12 W



HIXON DEVELOPMENT COMPANY
 South Bisti No. 21-H
 1900' FNL and 990' FEL
 Section 21, T25N, R12W
 SAN JUAN COUNTY, NEW MEXICO