

UNITED STATES
DEPARTMENT OF THE INTERIOR
BUREAU OF LAND MANAGEMENT

APPLICATION FOR PERMIT TO DRILL, DEEPEN, OR PLUG BACK

1a. TYPE OF WORK

DRILL ☒

DEEPEN ☐

PLUG BACK ☐

b. TYPE OF WELL

OIL
WELL ☐

GAS
WELL ☒

OTHER

SINGLE
ZONE ☒

MULTIPLE
ZONE ☐

2. NAME OF OPERATOR

Hixon Development Company

3. ADDRESS OF OPERATOR

P. O. Box 2810, Farmington, New Mexico 87499

4. LOCATION OF WELL (Report location clearly and in accordance with any State requirements.*)

At surface

800' FNL, 1730' FEL

At proposed prod. zone

Section 18, T25N, R11W, NMPM

14. DISTANCE IN MILES AND DIRECTION FROM NEAREST TOWN OR POST OFFICE*

24 miles southeast of Farmington, NM

15. DISTANCE FROM PROPOSED*

LOCATION TO NEAREST
PROPERTY OR LEASE LINE, FT.
(Also to nearest drlg. unit line, if any)

800'

16. NO. OF ACRES IN LEASE

160.00

17. NO. OF ACRES ASSIGNED
TO THIS WELL

E/ 320

18. DISTANCE FROM PROPOSED LOCATION*
TO NEAREST WELL, DRILLING, COMPLETED,
OR APPLIED FOR, ON THIS LEASE, FT.

290'

19. PROPOSED DEPTH

1400'

20. ROTARY OR CABLE TOOLS

Rotary

21. ELEVATIONS (Show whether DF, RT, GR, etc.)

6392' GLE

22. APPROX. DATE WORK WILL START*

March 7, 1990

and appeal pursuant to 43 CFR 3165.3

and appeal pursuant to 43 CFR 3165.4

PROPOSED CASING AND CEMENTING PROGRAM

SIZE OF HOLE	SIZE OF CASING	WEIGHT PER FOOT	SETTING DEPTH	QUANTITY OF CEMENT* ATTACHED
8-3/4"	7"	20#	110'	60 sks (1.18 ft ³ /sk) cmt to surface
6-1/4"	4-1/2"	10.5#	1400'	165 sks cmt to surface (85 sks - 2.06 ft ³ /sk) (80 sks - 1.18 ft ³ /sk)

It is proposed to drill the subject Basin Fruitland Coal Well. It will be evaluated on the basis of open hole logs. Please see attached Onshore Oil and Gas Order No. 1 data.

RECEIVED
JUN 25 1990
OIL CON. DIV
DIST. 3

IN ABOVE SPACE DESCRIBE PROPOSED PROGRAM: If proposal is to deepen or plug back, give data on present productive zone and proposed new productive zone. If proposal is to drill or deepen directionally, give pertinent data on subsurface locations and measured and true vertical depths. Give blowout preventer program, if any.

24.

SIGNED

John C. Corbett

TITLE Vice President-Exploration

DATE February 6, 1990

(This space for Federal or State office use)

PERMIT NO.

APPROVAL DATE

APPROVED

APPROVED BY

TITLE

CONDITIONS OF APPROVAL, IF ANY:

AREA MANAGER

*See Instructions On Reverse Side

Submit to Appropriate
District Office
State Lease - 4 copies
Fee Lease - 3 copies

State of New Mexico
Energy, Minerals and Natural Resources Department

Form C-102
Revised 1-1-89

OIL CONSERVATION DIVISION

P.O. Box 2088
Santa Fe, New Mexico 87504-2088

DISTRICT I

P.O. Box 1980, Hobbs, NM 88240

DISTRICT II

P.O. Drawer DD, Artesia, NM 88210

DISTRICT III

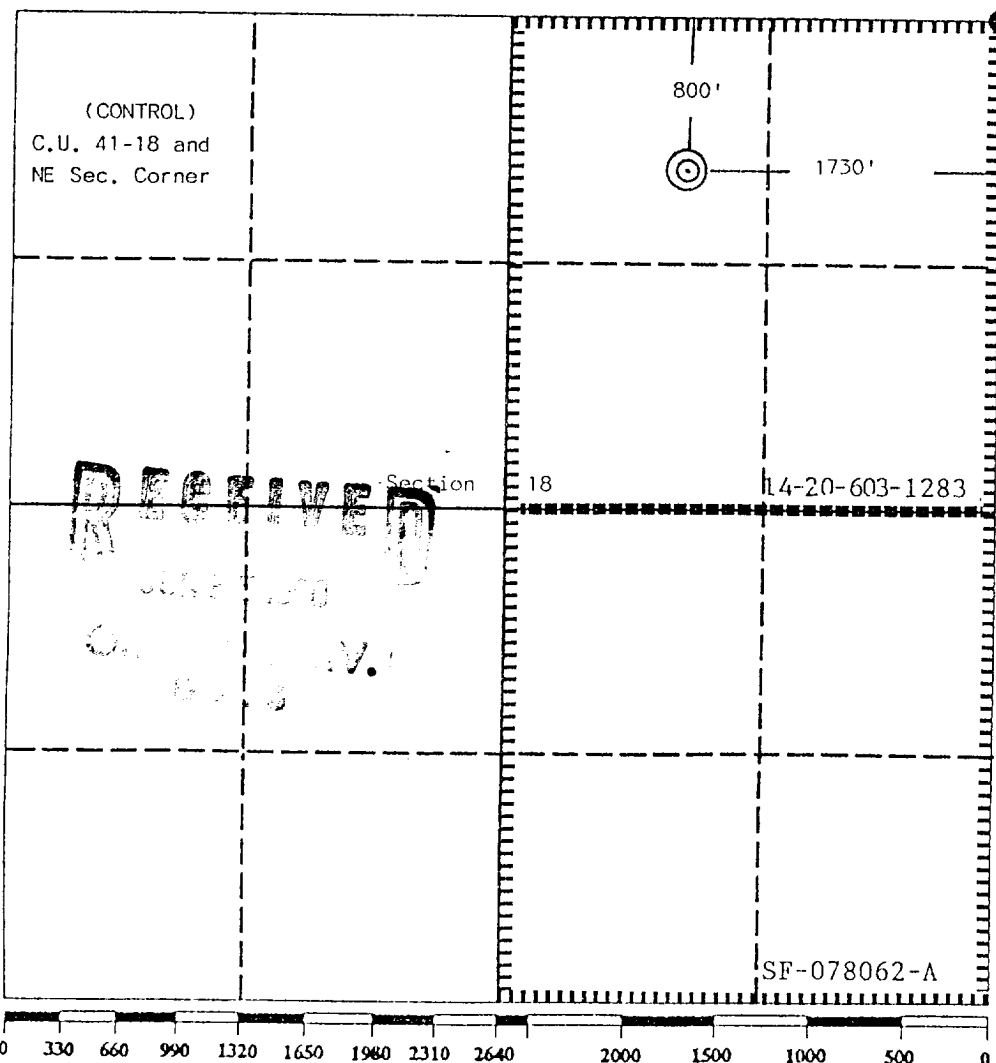
1000 Rio Brazos Rd., Aztec, NM 87410

WELL LOCATION AND ACREAGE DEDICATION PLAT

All Distances must be from the outer boundaries of the section

Operator Hixon Development Company			Lease Carson Unit		Well No. 331
Unit Letter B	Section 18	Township 25 North	Range 11 West	County NMPM	San Juan
Actual Footage Location of Well: 800 feet from the North line and 1730 feet from the East line					
Ground level Elev. 6392	Producing Formation Fruitland	Pool Basin Fruitland Coal		Dedicated Acreage: 320 Acres	

1. Outline the acreage dedicated to the subject well by colored pencil or hatchure marks on the plat below.
2. If more than one lease is dedicated to the well, outline each and identify the ownership thereof (both as to working interest and royalty).
3. If more than one lease of different ownership is dedicated to the well, have the interest of all owners been consolidated by communitization, unitization, force-pooling, etc.?
☐ Yes ☐ No If answer is "yes" type of consolidation _____
If answer is "no" list the owners and tract descriptions which have actually been consolidated. (Use reverse side of this form if necessary.) _____
No allowable will be assigned to the well until all interests have been consolidated (by communitization, unitization, forced-pooling, or otherwise) or until a non-standard unit, eliminating such interest, has been approved by the Division.



OPERATOR CERTIFICATION

I hereby certify that the information contained herein is true and complete to the best of my knowledge and belief.

Signature
John C. Corbett
Printed Name
John C. Corbett
Position
Vice President-Exploration
Company
Hixon Development Company
Date
January 19, 1990

SURVEYOR CERTIFICATION

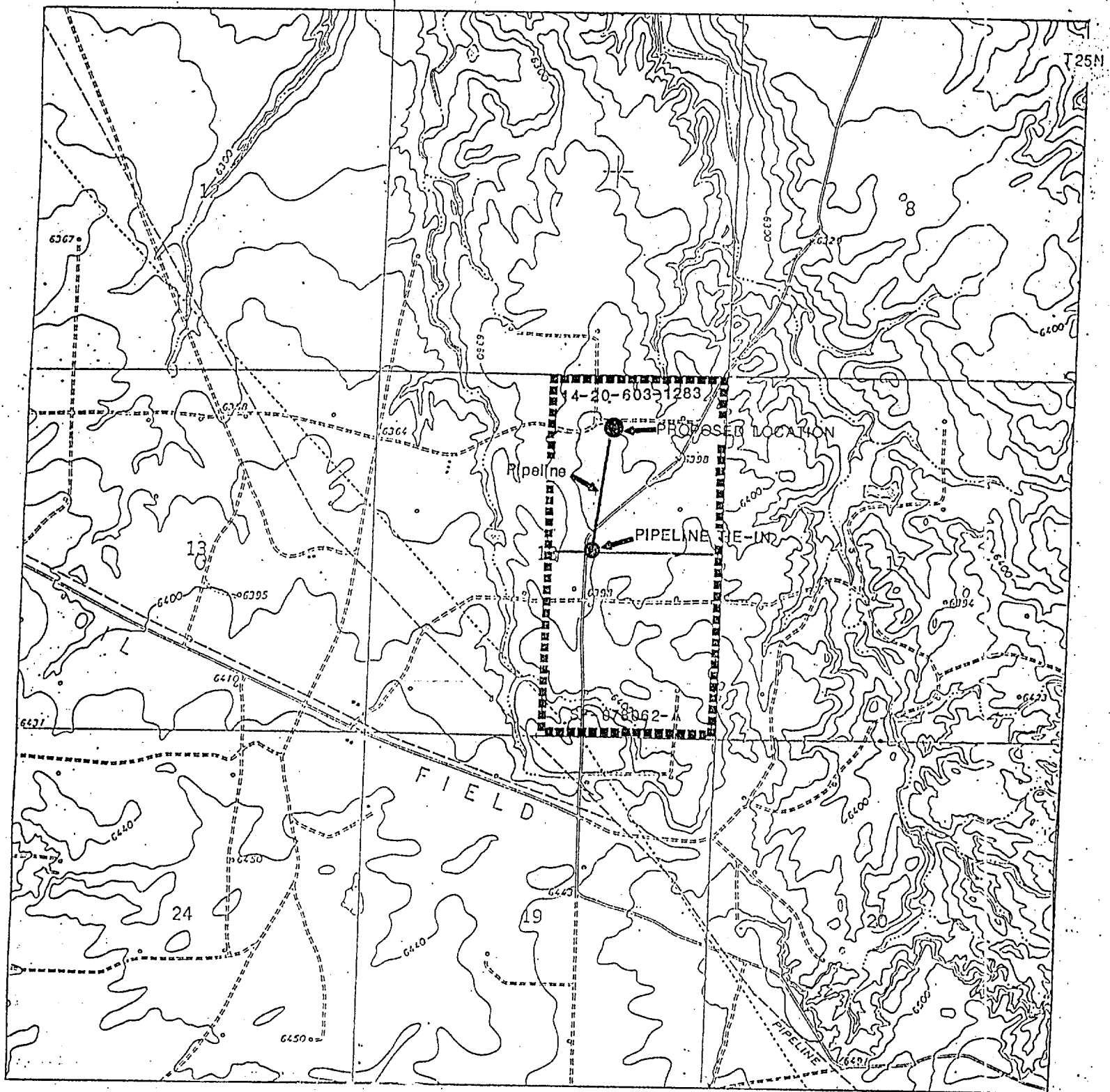
I hereby certify that the well location shown on this plat was plotted from field notes of actual surveys made by me or under my supervision, and that the same is true and correct to the best of my knowledge and belief.

Date Surveyed
January 11, 1990

Signature & Seal of Professional Surveyor
Edgar L. Risenhoover
Certificate No. 5879
Edgar L. Risenhoover

R12W R11W

T25N



Hixon Development Company
CARSON UNIT 331-18

800' FNL 1730' FEL
Section 18, T25N, R11W

San Juan County, New Mexico