

UNITED STATES
DEPARTMENT OF THE INTERIOR
BUREAU OF LAND MANAGEMENT

(please print)

Expires August 31, 1985

APPLICATION FOR PERMIT TO DRILL, DEEPEN, OR PLUG BACK

a. TYPE OF WORK

DRILL ☒

DEEPEN ☐

PLUG BACK ☐

b. TYPE OF WELL

OIL
WELL ☐

GAS
WELL ☒

OTHER

SINGLE
ZONE ☒

MULTIPLE
ZONE ☐

c. NAME OF OPERATOR

Hixon Development Company

d. ADDRESS OF OPERATOR

P. O. Box 2810, Farmington, New Mexico 87499

e. LOCATION OF WELL (Report location clearly and in accordance with any State requirements.)*

At surface

790' FNL, 790' FEL

At proposed prod. zone

Section 20, T25N, R11W, NMPM

f. DISTANCE IN MILES AND DIRECTION FROM NEAREST TOWN OR POST OFFICE*

25 miles southeast of Farmington, NM

g. DISTANCE FROM PROPOSED*

LOCATION TO NEAREST
PROPERTY OR LEASE LINE, FT.
(Also to nearest drlg. unit line, if any)

790'

h. DISTANCE FROM PROPOSED LOCATION*
TO NEAREST WELL, DRILLING, COMPLETED,
OR APPLIED FOR, ON THIS LEASE, FT.

185'

i. NO. OF ACRES IN LEASE

160.00

j. PROPOSED DEPTH

1400'

k. NO. OF ACRES ASSIGNED
TO THIS WELL

320

l. ROTARY OR CABLE TOOLS

Rotary

m. ELEVATIONS (Show whether DF, RT, GR, etc.)

6427' GLE

n. APPROX. DATE WORK WILL START*

March 7, 1990

This action is subject to technical and
procedural review pursuant to 43 CFR 3165.3
and appeal pursuant to 43 CFR 3165.4.

PROPOSED CASING AND CEMENTING PROGRAM

DRILLING OPERATIONS AUTHORIZED ARE
SUBJECT TO CONTINUANCE WITH ATTACHED
606 SKS (1.18 ft³/sk)
cmt to surface

165 sks cmt to surface
(85 sks - 2.06 ft³/sk)
(80 sks - 1.18 ft³/sk)

SIZE OF HOLE	SIZE OF CASING	WEIGHT PER FOOT	SETTING DEPTH
8-3/4"	7"	20#	110'
6-1/4"	4-1/2"	10.5#	1400'

It is proposed to drill the subject Basin Fruitland Coal Well. It will be evaluated on the basis of open hole logs. Please see attached Onshore Oil and Gas Order No. 1 data.

RECEIVED

JUN 25 1990

OIL CON. DIV./
DIST. 3

ABOVE SPACE DESCRIBE PROPOSED PROGRAM: If proposal is to deepen or plug back, give data on present productive zone and proposed new productive zone. If proposal is to drill or deepen directionally, give pertinent data on subsurface locations and measured and true vertical depths. Give blowout preventer program, if any.

SIGNED

John C. Corbett
John C. Corbett

TITLE Vice President-Exploration

DATE February 6, 1990

(This space for Federal or State office use)

PERMIT NO.

APPROVAL DATE

APPROVED BY

TITLE

CONDITIONS OF APPROVAL, IF ANY:

NMOCD

APPROVED

JUN 15 1990

AREA MANAGER

*See Instructions On Reverse Side

18 U.S.C. Section 1001, makes it a crime for any person knowingly and willfully to make to any department or agency of the United States any false, fictitious or fraudulent statements or representations as to any matter within its jurisdiction.

Submit to Appropriate
District Office
State Lease - 4 copies
Fee Lease - 3 copies

State of New Mexico
Energy, Minerals and Natural Resources Department

Form C-102
Revised 1-1-89

OIL CONSERVATION DIVISION
P.O. Box 2088
Santa Fe, New Mexico 87504-2088

DISTRICT I
P.O. Box 1980, Hobbs, NM 88240

DISTRICT II
P.O. Drawer DD, Artesia, NM 88210

DISTRICT III
1000 Rio Brazos Rd., Aztec, NM 87410

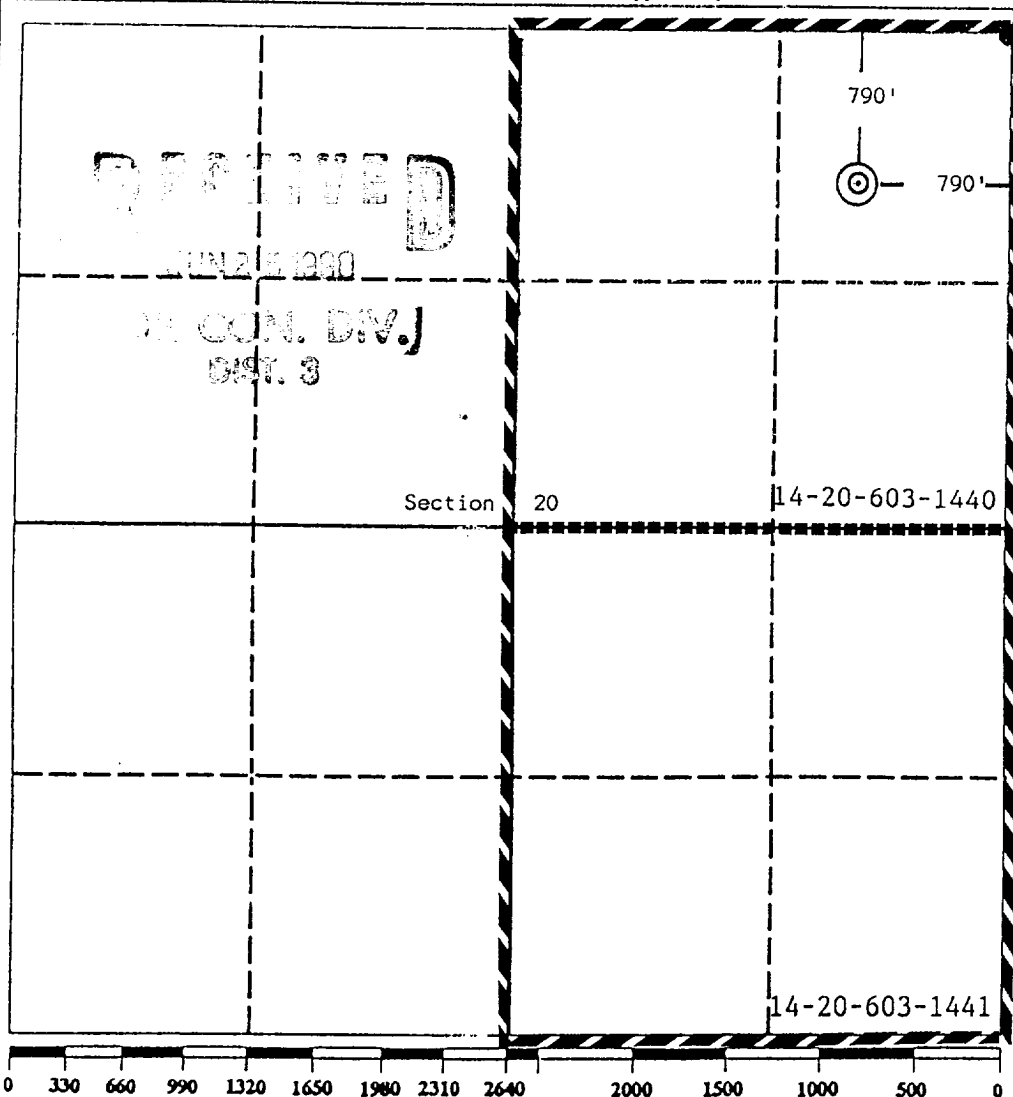
WELL LOCATION AND ACREAGE DEDICATION PLAT

All Distances must be from the outer boundaries of the section

PARKING LOT, NEW MEXICO

Operator Hixon Development Company			Lease Carson Unit		Well No. 341
Unit Letter A	Section 20	Township 25 North	Range 11 West	County San Juan	
Actual Footage Location of Well: 790 feet from the North line and 790 feet from the East line					
Ground level Elev. 6427		Producing Formation Fruitland		Pool Basin Fruitland Coal	Dedicated Acreage: 320 Acres

1. Outline the acreage dedicated to the subject well by colored pencil or hatchure marks on the plat below.
2. If more than one lease is dedicated to the well, outline each and identify the ownership thereof (both as to working interest and royalty).
3. If more than one lease of different ownership is dedicated to the well, have the interest of all owners been consolidated by communization, unitization, force-pooling, etc.?
☐ Yes ☐ No If answer is "yes" type of consolidation _____
If answer is "no" list the owners and tract descriptions which have actually been consolidated. (Use reverse side of this form if necessary.)
No allowable will be assigned to the well until all interests have been consolidated (by communization, unitization, forced-pooling, or otherwise) or until a non-standard unit, eliminating such interest, has been approved by the Division.



OPERATOR CERTIFICATION

I hereby certify that the information contained herein is true and complete to the best of my knowledge and belief.

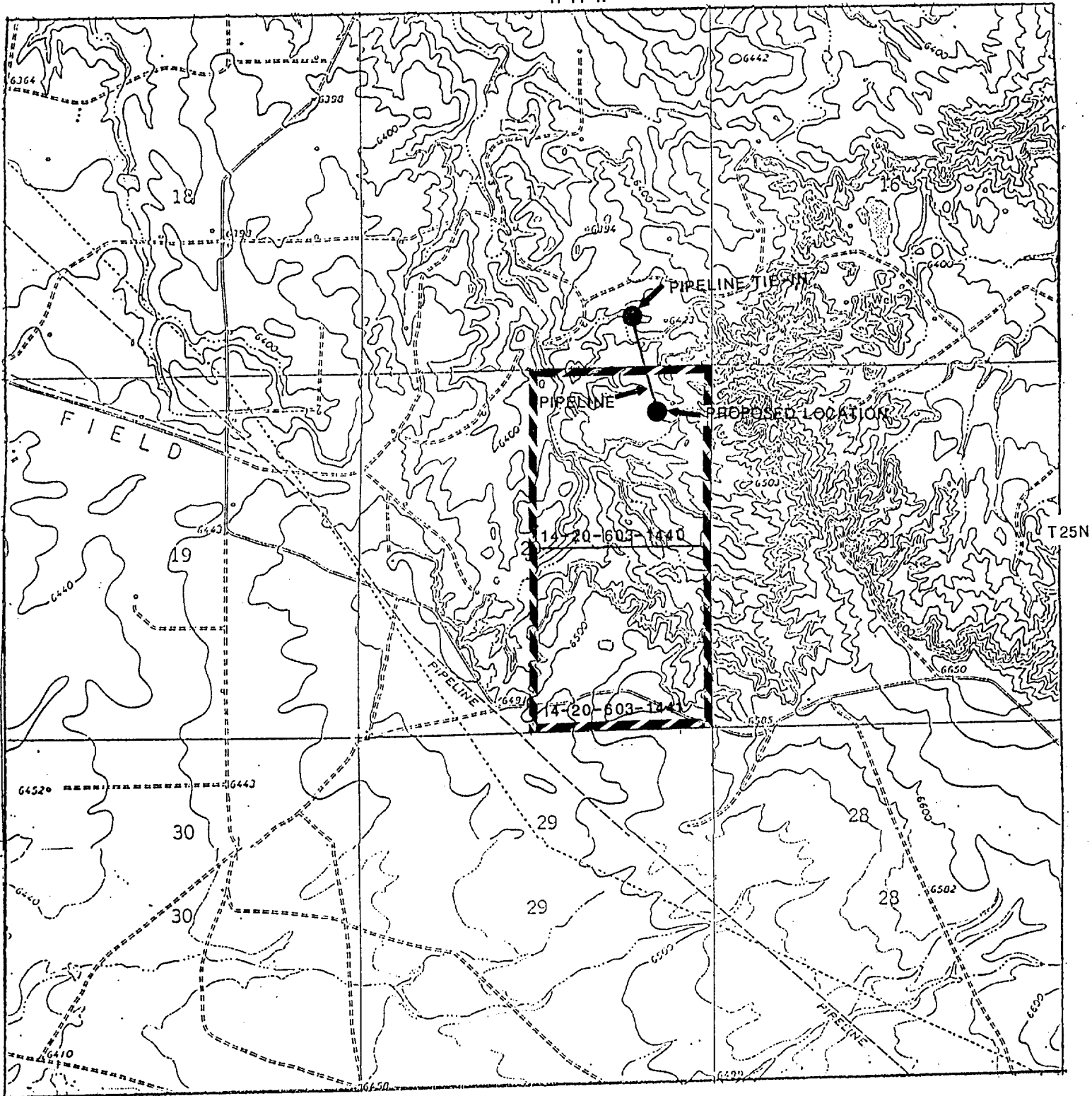
Signature
John C. Corbett
Printed Name
John C. Corbett
Position
Vice President-Exploration
Company
Hixon Development Company
Date
January 30, 1990

SURVEYOR CERTIFICATION

I hereby certify that the well location shown on this plat was plotted from field notes of actual surveys made by me or under my supervision, and that the same is true and correct to the best of my knowledge and belief.

Date Surveyed
January 16, 1990
Signature & Seal of Professional Surveyor
Edgar L. Risenhoover
Certification Number
5979
Edgar L. Risenhoover

R 11 W



HIKON DEVELOPMENT COMPANY

Carson Unit 341-20

790' FNL 790' FEL

Section 20, T25N, R11W

SAN JUAN COUNTY, NEW MEXICO