

UNITED STATES
DEPARTMENT OF THE INTERIOR
BUREAU OF LAND MANAGEMENT

APPLICATION FOR PERMIT TO DRILL, DEEPEN, OR PLUG BACK

1a. TYPE OF WORK

DRILL ☒

DEEPEN ☐

PLUG BACK ☐

b. TYPE OF WELL

OIL
WELL ☐

GAS
WELL ☒

OTHER

SINGLE
ZONE ☒

MULTIPLE
ZONE ☐

2. NAME OF OPERATOR

Hixon Development Company

3. ADDRESS OF OPERATOR

P. O. Box 2810 Farmington, New Mexico 87499

4. LOCATION OF WELL (Report location clearly and in accordance with any State requirements.)*
At surface

1750' FSL, 1845' FWL, Section 14, T25N, R11W
At proposed prod. zone

14. DISTANCE IN MILES AND DIRECTION FROM NEAREST TOWN OR POST OFFICE*

25.5 Miles southeast of Farmington, New Mexico

10. DISTANCE FROM PROPOSED*

LOCATION TO NEAREST
PROPERTY OR LEASE LINE, FT.
(Also to nearest drig. unit line, if any) 795'

16. NO. OF ACRES IN LEASE

160.00

17. NO. OF ACRES ASSIGNED
TO THIS WELL

320

18. DISTANCE FROM PROPOSED LOCATION*
TO NEAREST WELL, DRILLING, COMPLETED,
OR APPLIED FOR, ON THIS LEASE, FT.

320'

19. PROPOSED DEPTH

1475'

20. ROTARY OR CABLE TOOLS

Rotary

21. ELEVATIONS (Show whether DF, RT, GR, etc.)

GLE 6433'

DRILLING OPERATIONS ARE
SUBJECT TO COMPLETION WITH ATTACHED

22. APPROX. DATE WORK WILL START*

January 1, 1990

23.

PROPOSED CASING AND CEMENTING PROGRAM

This action is subject to technical and
procedural review pursuant to 43 CFR 3155.3
and appeal pursuant to 43 CFR 3165.4.

SIZE OF HOLE	SIZE OF CASING	WEIGHT PER FOOT	SETTING DEPTH	QUANTITY OF CEMENT
12-1/4"	8-5/8"	24#	110'	60 sks (1.18 cu ft/sk) to surface
6-1/4"	4-1/2"	10.5#	1475'	165 sks to surface
				80 sks - (2.06 cu ft/sk)
				85 sks - (1.18 cu ft/sk)

It is proposed to drill the subject Basin Fruitland Coal Well. It will be evaluated on the basis of open hole logs. Please see attached Onshore Oil and Gas Order No. 1 data.

RECEIVED
AUG 21 1990
OIL CON. DIV.
DIST. 3

IN ABOVE SPACE DESCRIBE PROPOSED PROGRAM: If proposal is to deepen or plug back, give data on present productive zone and proposed new productive zone. If proposal is to drill or deepen directionally, give pertinent data on subsurface locations and measured and true vertical depths. Give blowout preventer program, if any.

24.

SIGNED

John C. Corbett
John C. Corbett

TITLE Vice President/Exploration

DATE

11/21/89

(This space for Federal or State office use)

PERMIT NO.

APPROVAL DATE

APPROVED BY

TITLE

CONDITIONS OF APPROVAL, IF ANY:

NMOCD

*See Instructions On Reverse Side

Submit to Appropriate
District Office
State Lease - 4 copies
Fee Lease - 3 copies

State of New Mexico
Energy, Minerals and Natural Resources Department

Form C-102
Revised 1-1-89

OIL CONSERVATION DIVISION

P.O. Box 2088
Santa Fe, New Mexico 87504-2088

DISTRICT I
P.O. Box 1980, Hobbs, NM 88240

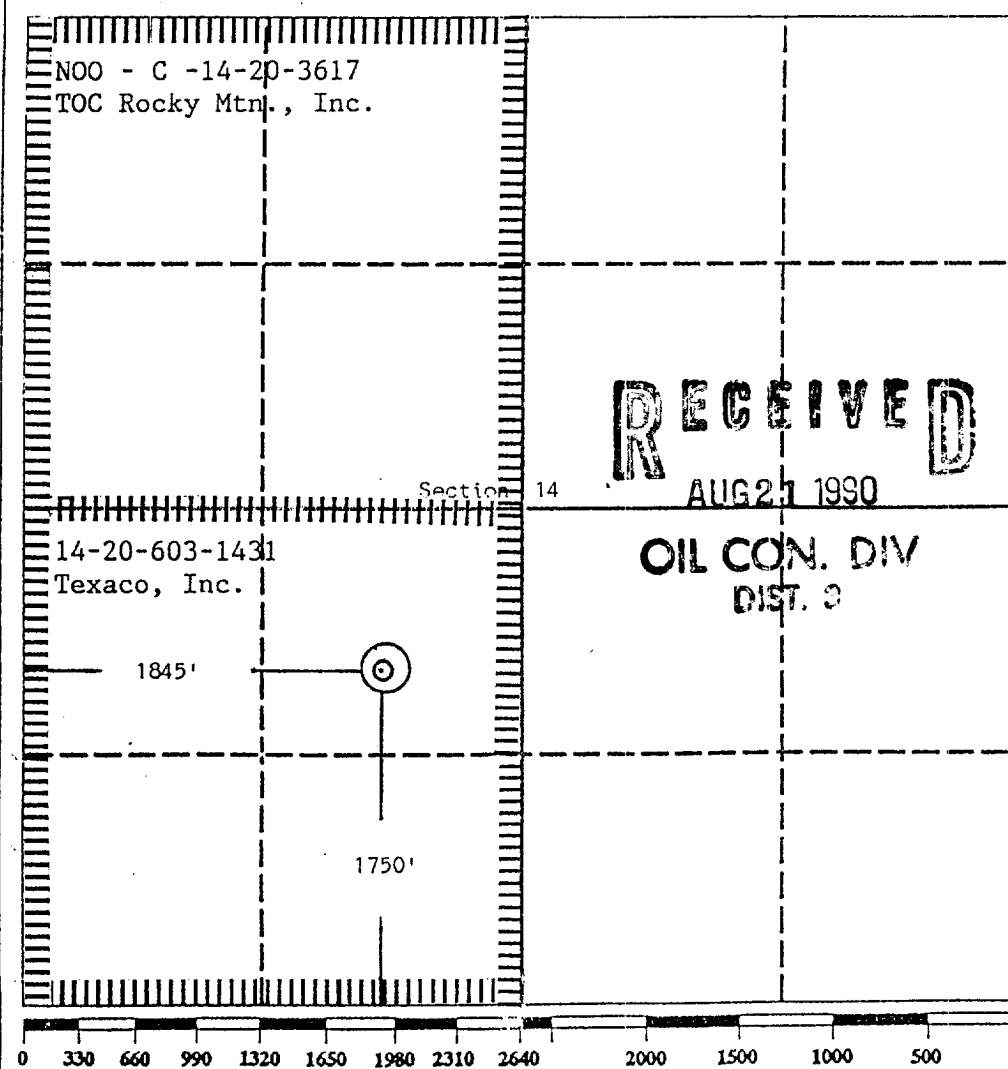
DISTRICT II
P.O. Drawer DD, Artesia, NM 88210

DISTRICT III
1000 Rio Brazos Rd., Aztec, NM 87410

WELL LOCATION AND ACREAGE DEDICATION PLAT

All Distances must be from the outer boundaries of the section

Operator Hixon Development Company			Lease Buena Suerte 14 K Com.		Well No. 1
Unit Letter K	Section 14	Township 25 North	Range 11 West	County San Juan	
Actual Footage Location of Well: 1750 feet from the South line and 1845 feet from the West line					
Ground level Elev. 6433	Producing Formation Fruitland		Pool Basin Fruitland Coal	Dedicated Acreage: 320 Acres	
<p>1. Outline the acreage dedicated to the subject well by colored pencil or hatchure marks on the plat below.</p> <p>2. If more than one lease is dedicated to the well, outline each and identify the ownership thereof (both as to working interest and royalty).</p> <p>3. If more than one lease of different ownership is dedicated to the well, have the interest of all owners been consolidated by communitization, unitization, force-pooling, etc.? <input type="checkbox"/> Yes <input checked="" type="checkbox"/> No If answer is "yes" type of consolidation _____</p> <p>If answer is "no" list the owners and tract descriptions which have actually been consolidated. (Use reverse side of this form if necessary. <u>Communitization with Texaco pending.</u></p> <p>No allowable will be assigned to the well until all interests have been consolidated (by communitization, unitization, forced-pooling, or otherwise) or until a non-standard unit, eliminating such interest, has been approved by the Division.</p>					



OPERATOR CERTIFICATION

I hereby certify that the information contained herein in true and complete to the best of my knowledge and belief.

Signature

Printed Name

John C. Corbett

Position

Vice President/Exploration
Company

Hixon Development Company

Date

October 26, 1989

SURVEYOR CERTIFICATION

I hereby certify that the well location shown on this plat was plotted from field notes of actual surveys made by me or under my supervision, and that the same is true and correct to the best of my knowledge and belief.

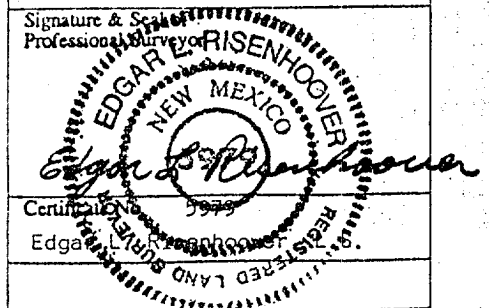
Date Surveyed

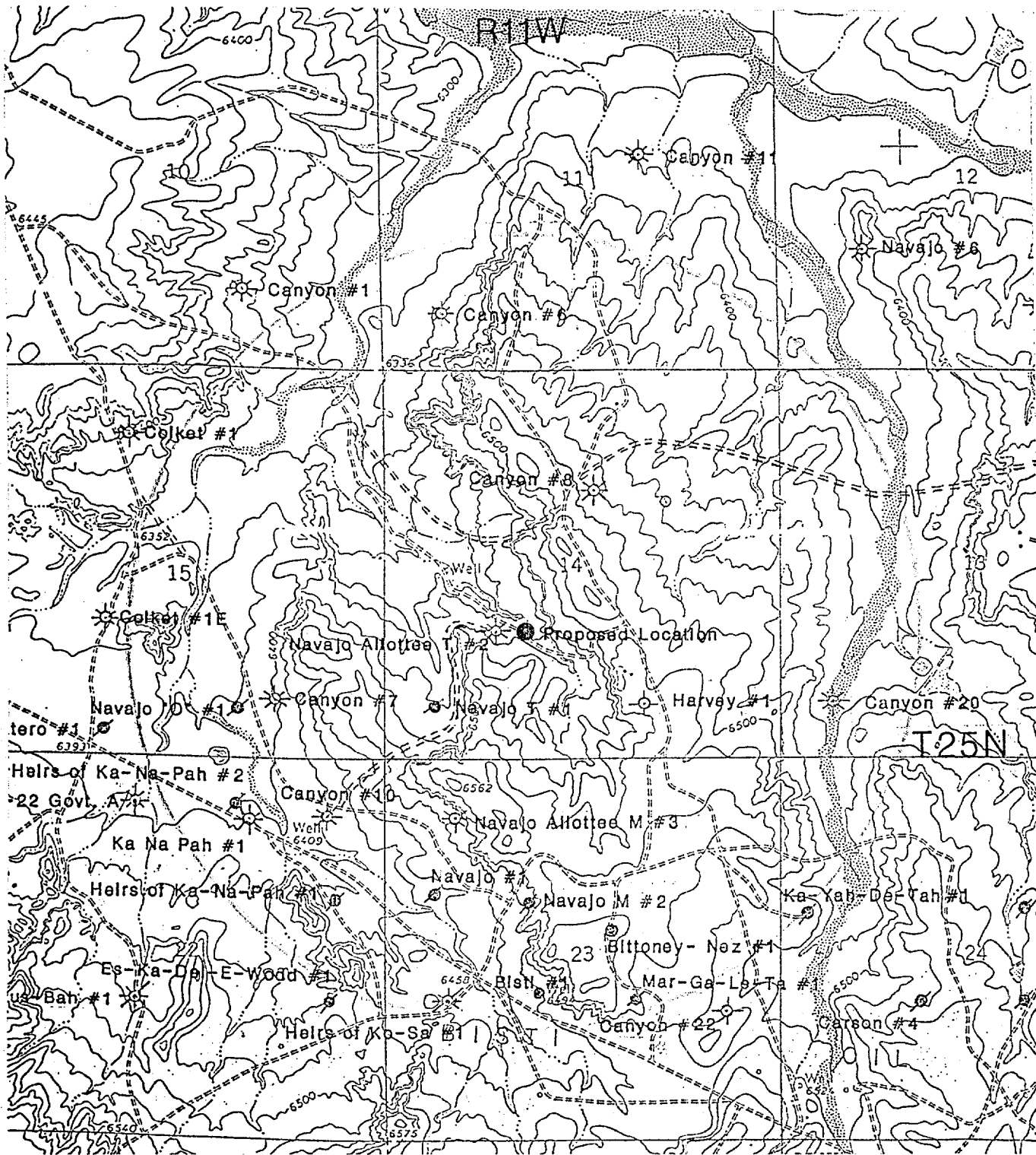
October 23, 1989

Signature & Seal of
Professional Surveyor

Certified to be
Edgar L. Risenhoover

Edgar L. Risenhoover





Hixon Development Company
 Buena Suerte 14K Com. #1
 1750' FSL and 1845' FWL
 Section 14, T25N, R11W
 San Juan County, NM