

UNITED STATES  
DEPARTMENT OF THE INTERIOR  
BUREAU OF LAND MANAGEMENT

APPLICATION FOR PERMIT TO DRILL, DEEPEN, OR PLUG BACK

1a. TYPE OF WORK

DRILL ☒

DEEPEN ☐

PLUG BACK ☐

b. TYPE OF WELL

OIL  
WELL ☐

GAS  
WELL ☒

OTHER

SINGLE  
ZONE ☒

MULTIPLE  
ZONE ☐

2. NAME OF OPERATOR

Hixon Development Company

3. ADDRESS OF OPERATOR

P. O. Box 2810, Farmington, New Mexico 87499

4. LOCATION OF WELL (Report location clearly and in accordance with any State requirements.)\*

At surface

1925' FSL and 805' FWL

At proposed prod. zone

Section 3, T25N, R11W, NMPM

14. DISTANCE IN MILES AND DIRECTION FROM NEAREST TOWN OR POST OFFICE\*

20.2 miles southeast of Bloomfield, NM

15. DISTANCE FROM PROPOSED\*

LOCATION TO NEAREST  
PROPERTY OR LEASE LINE, FT.  
(Also to nearest drlg. unit line, if any)

715'

16. NO. OF ACRES IN LEASE

160.00

18. DISTANCE FROM PROPOSED LOCATION\*  
TO NEAREST WELL, DRILLING, COMPLETED,  
OR APPLIED FOR, ON THIS LEASE, FT.

450'

19. PROPOSED DEPTH

1500'

17. NO. OF ACRES ASSIGNED  
TO THIS WELL

W/ 320-43

20. ROTARY OR CABLE TOOLS

Rotary

21. ELEVATIONS (Show whether DF, BT, CR, etc.)

This action is subject to technical and  
procedural review pursuant to 43 CFR 3165.3

6338' GLE

22. APPROX. DATE WORK WILL START\*

July 10, 1990

23. and appeal pursuant to 43 CFR 3165.4

PROPOSED CASING AND CEMENTING PROGRAM

DRILLING OPERATIONS AUTHORIZED ARE  
SUBJECT TO COMPLIANCE WITH ATTACHED  
"GENERAL REQUIREMENTS"

SIZE OF HOLE	SIZE OF CASING	WEIGHT PER FOOT	SETTING DEPTH
8-3/4"	7"	20#	110'
6-1/4"	4-1/2"	10.5#	1500'

60 sks (1.18 ft<sup>3</sup>/sk)

cmt to surface

175 sks cmt to surface

(85 sks - 2.06 ft<sup>3</sup>/sk)

(90 sks - 1.18 ft<sup>3</sup>/sk)

It is proposed to drill the subject Basin Fruitland Coal well. It will be evaluated on the basis of open hole logs. Please see attached Onshore Oil and Gas Order No. 1 data.

RECEIVED  
SEP 04 1990  
OIL CON. DIV.  
DIST. 3

IN ABOVE SPACE DESCRIBE PROPOSED PROGRAM: If proposal is to deepen or plug back, give data on present productive zone and proposed new productive zone. If proposal is to drill or deepen directionally, give pertinent data on subsurface locations and measured and true vertical depths. Give blowout preventer program, if any.

24.

SIGNED

*John C. Corbett*  
John C. Corbett

TITLE Vice President-Exploration

DATE June 22, 1990

(This space for Federal or State office use)

PERMIT NO.

APPROVAL DATE

APPROVED BY

TITLE

CONDITIONS OF APPROVAL, IF ANY:

DATE

NMOCD

\*See Instructions On Reverse Side

Submit to Appropriate  
District Office  
State Lease - 4 copies  
Fee Lease - 3 copies

State of New Mexico  
Energy, Minerals and Natural Resources Department

Form C-102  
Revised 1-1-89

OIL CONSERVATION DIVISION

P.O. Box 2088  
Santa Fe, New Mexico 87504-2088

DISTRICT I  
P.O. Box 1980, Hobbs, NM 88240

DISTRICT II  
P.O. Drawer DD, Artesia, NM 88210

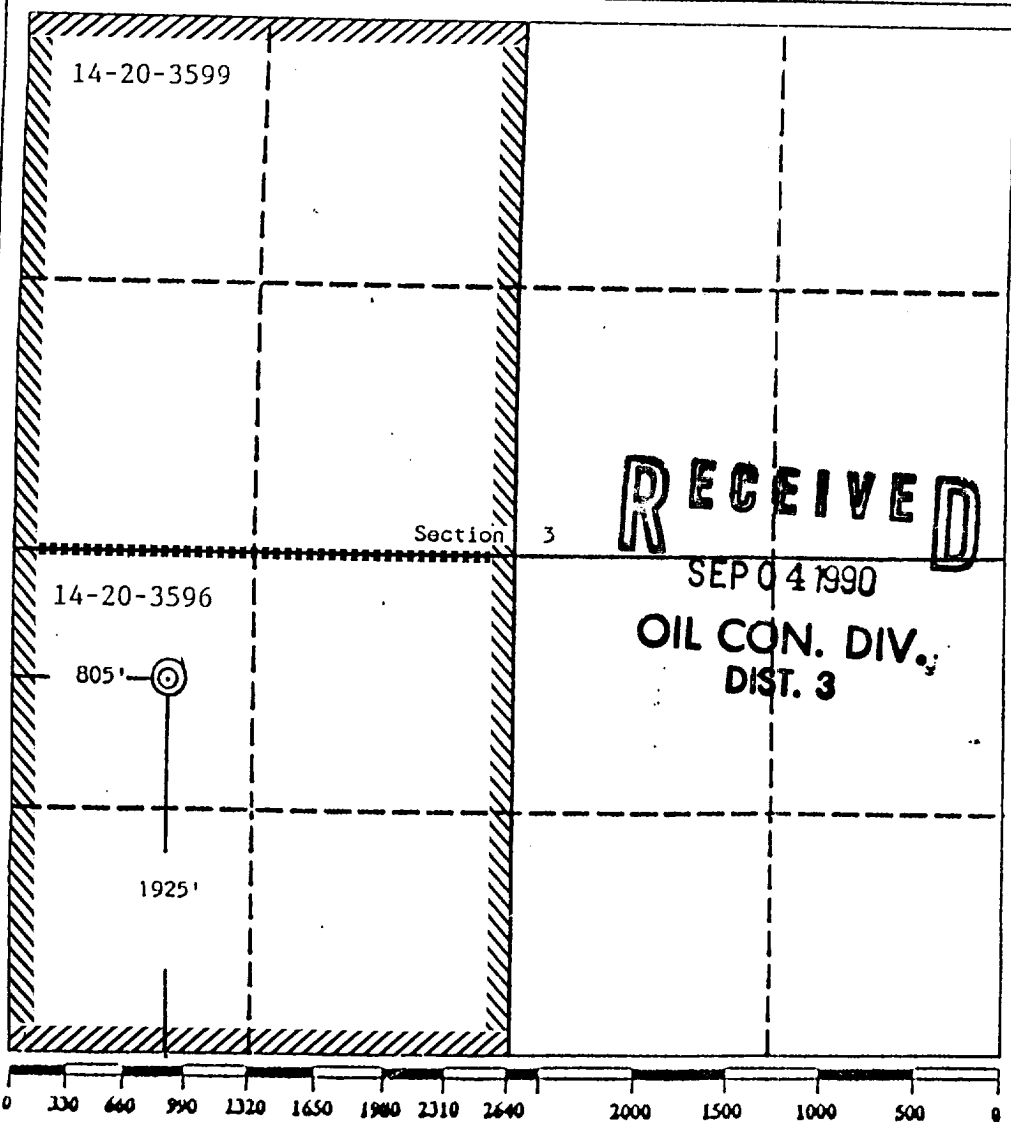
DISTRICT III  
1000 Rio Brazos Rd., Aztec, NM 87410

WELL LOCATION AND ACREAGE DEDICATION PLAT

All Distances must be from the outer boundaries of the section

Operator Hixon Development Company			Lease Buena Suerte		Well No. 3 L Com #1
Unit Letter L	Section 3	Township 25 North	Range 11 West	County San Juan	
Actual Footage Location of Well: 1925 feet from the South line and 805 feet from the West line					
Ground level Elev. 6338	Producing Formation Fruitland		Pool Basin Fruitland	Dedicated Acreage: 320.43	

- Outline the acreage dedicated to the subject well by colored pencil or hatchure marks on the plat below.
- If more than one lease is dedicated to the well, outline each and identify the ownership thereof (both as to working interest and royalty).
- If more than one lease of different ownership is dedicated to the well, have the interest of all owners been consolidated by communitization, unitization, force-pooling, etc.?  
☐ Yes ☒ No If answer is "yes" type of consolidation \_\_\_\_\_  
If answer is "no" list the owners and tract descriptions which have actually been consolidated. (Use reverse side of this form if necessary. 14-20-3596 is operated by Hixon Development Company.  
No allowable will be assigned to the well until all interests have been consolidated (by communitization, unitization, force-pooling, or otherwise) or until a non-standard unit, eliminating such interest, has been approved by the Division.



OPERATOR CERTIFICATION

I hereby certify that the information contained herein is true and complete to the best of my knowledge and belief.

Signature

*John C. Corbett*

Printed Name

John C. Corbett

Position

Vice President-Exploration

Company

Hixon Development Company

Date

March 26, 1990

SURVEYOR CERTIFICATION

I hereby certify that the well location shown on this plat was plotted from field notes of actual surveys made by me or under my supervision, and that the same is true and correct to the best of my knowledge and belief.

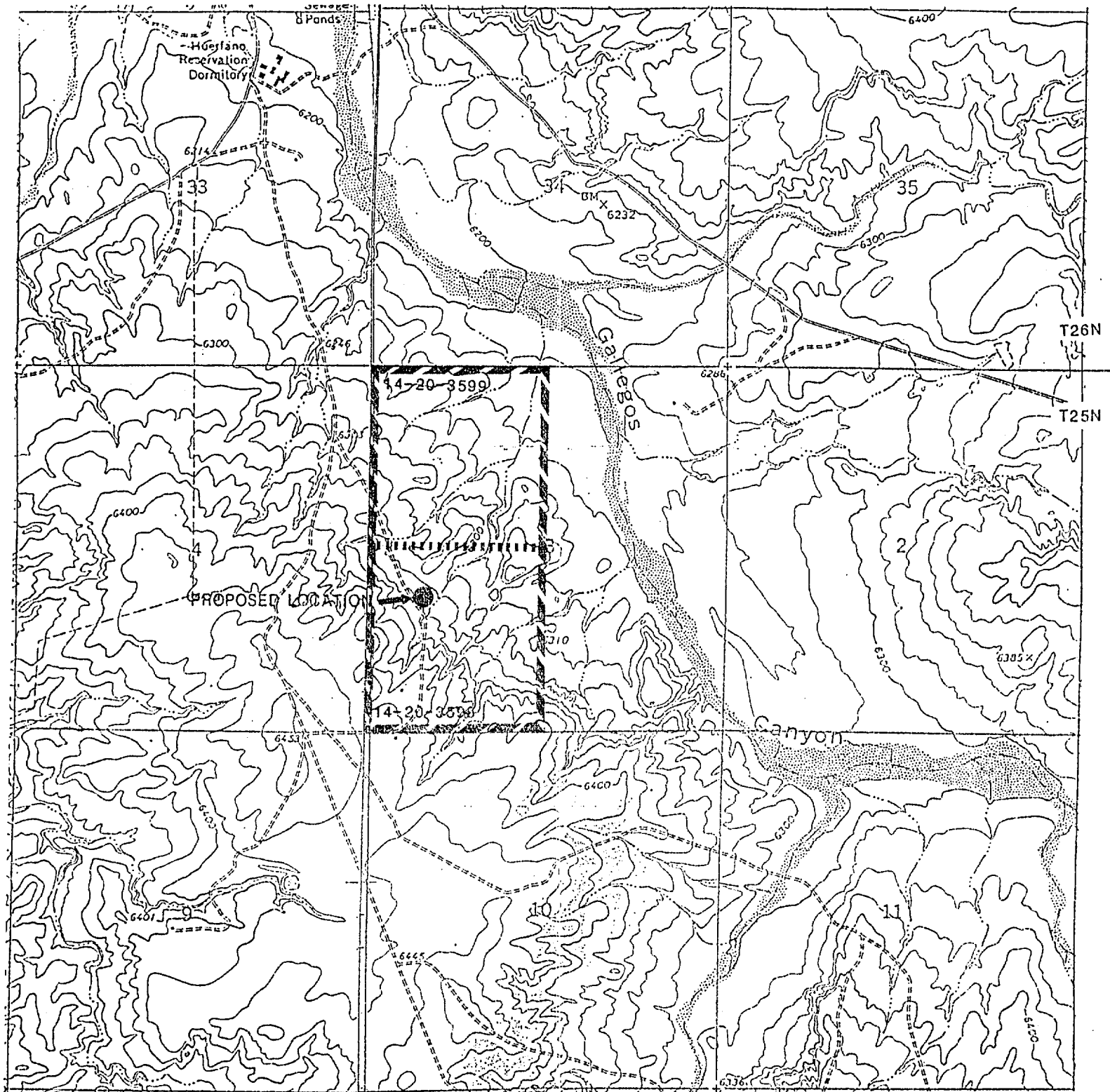
Date Surveyed

March 13, 1990

Signature & Seal of  
Professional Surveyor

*Edgar L. Risenhoover*  
EDGAR L. RISENHOOVER  
NEW MEXICO  
5970  
Edgar L. Risenhoover

R 11 W



HIxon DEVELOPMENT COMPANY

Buena Suerte 3L Com No. 1  
1925' FSL and 805' FWL  
Section 3, T25N, R11W  
San Juan County, New Mexico