

UNITED STATES
DEPARTMENT OF THE INTERIOR
BUREAU OF LAND MANAGEMENT

APPLICATION FOR PERMIT TO DRILL, DEEPEN, OR PLUG BACK

1a. TYPE OF WORK

DRILL ☒

DEEPEN ☐

PLUG BACK ☐

b. TYPE OF WELL

OIL
WELL ☒

GAS
WELL ☐

OTHER

SINGLE
ZONE ☒

MULTIPLE
ZONE ☐

2. NAME OF OPERATOR

Hixon Development Company

3. ADDRESS OF OPERATOR

P. O. Box 2810, Farmington, New Mexico 87499

4. LOCATION OF WELL (Report location clearly and in accordance with any State requirements.)*

At surface P-32-25N-11W

330' FNL, 330' FEL, Section 5, T24N, R11W

At proposed prod. zone

14. DISTANCE IN MILES AND DIRECTION FROM NEAREST TOWN OR POST OFFICE*

28 miles southeast of Farmington

15. DISTANCE FROM PROPOSED*

LOCATION TO NEAREST
PROPERTY OR LEASE LINE, FT.
(Also to nearest drlg. unit line, if any)

330'

16. NO. OF ACRES IN LEASE

2005.58

17. NO. OF ACRES ASSIGNED
TO THIS WELL

N/A

18. DISTANCE FROM PROPOSED LOCATION*

TO NEAREST WELL, DRILLING, COMPLETED,
OR APPLIED FOR, ON THIS LEASE, FT.

N/A

19. PROPOSED DEPTH

5000' vertical

20. ROTARY OR CABLE TOOLS

Rotary

21. ELEVATIONS (Show whether DE, RT, GR, etc.)

6488' GLE

This action is subject to technical and

23. PROPOSED CASING AND CEMENTING PROGRAM

procedural review pursuant to 43 CFR 3165.3
and appeal pursuant to 43 CFR 3165.4.

SIZE OF HOLE	SIZE OF CASING	WEIGHT PER FOOT	SETTING DEPTH	QUANTITY OF CEMENT
12-1/4"	8-5/8"	24#	350'	250 sks.
7-7/8"	5-1/2"	15.5#	5000'	600 sks.

DRILLING OPERATIONS AUTHORIZED ARE
SUBJECT TO COMPLIANCE WITH ATTACHED
"GENERAL REQUIREMENTS".

It is proposed to drill the subject Bisti Lower Gallup oil well. It will be evaluated on the basis of open hole logs. Please see the attached data required by Onshore Oil and Gas Order No. 1.

RECEIVED
SEP 04 1990
OIL CON. DIV.
DIST. 3

"Approval of this action does
not warrant that the applicant
holds legal or equitable rights
or title to this lease."

IN ABOVE SPACE DESCRIBE PROPOSED PROGRAM: If proposal is to deepen or plug back, give data on present productive zone and proposed new productive zone. If proposal is to drill or deepen directionally, give pertinent data on subsurface locations and measured and true vertical depths. Give blowout preventer program, if any.

24.

SIGNED

John C. Corbett

TITLE Vice President/Exploration

DATE January 19, 1990

(This space for Federal or State office use)

PERMIT NO.

APPROVAL DATE

APPROVED BY

TITLE

DATE

CONDITIONS OF APPROVAL, IF ANY:

Held C-104 FOR DD order @ NMJCO

AUG 24 1990
AREA MANAGER

*See Instructions On Reverse Side

Submit to Appropriate
District Office
State Lease - 4 copies
Fee Lease - 3 copies

State of New Mexico
Energy, Minerals and Natural Resources Department

Form C-102
Revised 1-1-89

OIL CONSERVATION DIVISION

P.O. Box 2088
Santa Fe, New Mexico 87504-2088

DISTRICT I
P.O. Box 1980, Hobbs, NM 88240

DISTRICT II
P.O. Drawer DD, Artesia, NM 88210

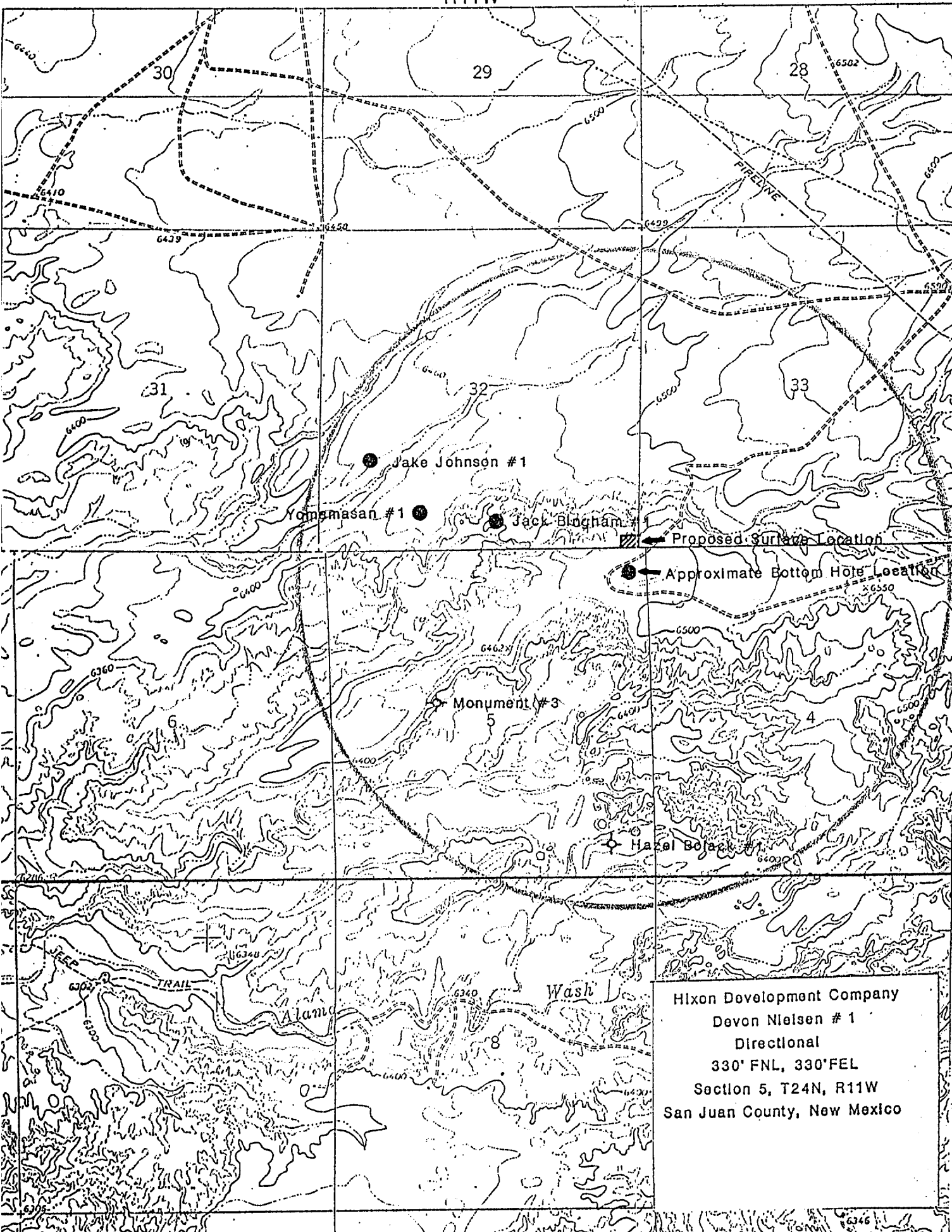
DISTRICT III
1000 Rio Brazos Rd., Aztec, NM 87410

WELL LOCATION AND ACREAGE DEDICATION PLAT

All Distances must be from the outer boundaries of the section

Operator Hixon Development Company			Lease Devon Nielsen		Well No. 1
Unit Letter A	Section 5	Township T24N	Range 11 West	County NMPM San Juan	
Actual Footage Location of Well: 330 feet from the North line and 330 feet from the East line					
Ground level Elev. 6484	Producing Formation Gallup	Pool Bisti Lower Gallup EXT		Dedicated Acreage: 80 Acres	
<p>1. Outline the acreage dedicated to the subject well by colored pencil or hatchure marks on the plat below.</p> <p>2. If more than one lease is dedicated to the well, outline each and identify the ownership thereof (both as to working interest and royalty).</p> <p>3. If more than one lease of different ownership is dedicated to the well, have the interest of all owners been consolidated by communitization, unitization, force-pooling, etc.? <input type="checkbox"/> Yes <input type="checkbox"/> No If answer is "yes" type of consolidation _____ If answer is "no" list the owners and tract descriptions which have actually been consolidated. (Use reverse side of this form if necessary.) No allowable will be assigned to the well until all interests have been consolidated (by communitization, unitization, forced-pooling, or otherwise) or until a non-standard unit, eliminating such interest, has been approved by the Division.</p>					
<div style="text-align: center;"><p>Section 32</p><p>Section 5</p><p>Sec. 32</p><p>Sec. 33</p><p>Sec. 5</p><p>Sec. 4</p><p>T-25-N</p><p>T-24-N</p><p>200'</p><p>105'</p><p>330'</p><p>330'</p></div>				OPERATOR CERTIFICATION I hereby certify that the information contained herein is true and complete to the best of my knowledge and belief. Signature <i>John C. Corbett</i> Printed Name John C. Corbett Position Vice President/Exploration Company Hixon Development Company Date November 7, 1989	
				SURVEYOR CERTIFICATION I hereby certify that the well location shown on this plat was plotted from field notes of actual surveys made by me or under my supervision, and that the same is true and correct to the best of my knowledge and belief. Date Surveyed Revised November 1, 1989 Signature & Seal of Professional Surveyor Certificate No. 5979 Edgar L. Risenhoover	

R11W



T25N

T24N

Hixon Development Company
Devon Nielsen # 1
Directional
330' FNL, 330' FEL
Section 5, T24N, R11W
San Juan County, New Mexico