

UNITED STATES  
DEPARTMENT OF THE INTERIOR  
BUREAU OF LAND MANAGEMENT

30-045-28320

APPLICATION FOR PERMIT TO DRILL, DEEPEN, OR PLUG BACK

1a. TYPE OF WORK

DRILL ☒

DEEPEN ☐

PLUG BACK ☐

b. TYPE OF WELL

OIL  
WELL ☒

GAS  
WELL ☐

OTHER

SINGLE  
ZONE ☒

MULTIPLE  
ZONE ☐

2. NAME OF OPERATOR

Hixon Development Company

3. ADDRESS OF OPERATOR

P. O. Box 2810, Farmington, New Mexico 87499

4. LOCATION OF WELL (Report location clearly and in accordance with any State requirements.)\*

At surface

950' FSL and 2235' FEL

At proposed prod. zone

Section 17, T25N, R12W, NMPM

14. DISTANCE IN MILES AND DIRECTION FROM NEAREST TOWN OR POST OFFICE\*

23.2 miles south of Farmington, NM

15. DISTANCE FROM PROPOSED\*

LOCATION TO NEAREST  
PROPERTY OR LEASE LINE, FT.  
(Also to nearest drlg. unit line, if any)

950'

18. DISTANCE FROM PROPOSED LOCATION\*

TO NEAREST WELL, DRILLING, COMPLETED,  
OR APPLIED FOR, ON THIS LEASE, FT.

2750'

16. NO. OF ACRES IN LEASE

360.00

19. PROPOSED DEPTH

5025'

17. NO. OF ACRES ASSIGNED  
TO THIS WELL

5/80

20. ROTARY OR CABLE TOOLS

Rotary

21. ELEVATIONS (Show surface, etc.)

This action is subject to technical and  
procedural review pursuant to 43 CFR 3165.3  
and appeal pursuant to 43 CFR 3165.4.

6267' GLE

22. APPROX. DATE WORK WILL START\*

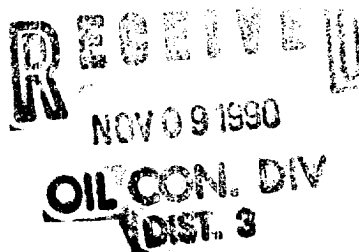
July 10, 1990

PROPOSED CASING AND CEMENTING PROGRAM

SIZE OF HOLE	SIZE OF CASING	WEIGHT PER FOOT	SETTING DEPTH
12-1/4"	8-5/8"	24#	360'
7-7/8"	5-1/2"	15.5#	5025'

DRILLING OPERATIONS AUTHORIZED ARE  
SUBJECT TO COMPLIANCE WITH ATTACHED  
"GENERAL REQUIREMENTS".  
250 sks  
600 sks

It is proposed to drill the subject Bisti Lower Gallup oil well. It will be  
evaluated on the basis of open hole logs. Please see attached Onshore Oil and  
Gas Order No. 1 data.



IN ABOVE SPACE DESCRIBE PROPOSED PROGRAM: If proposal is to deepen or plug back, give data on present productive zone and proposed new productive  
zone. If proposal is to drill or deepen directionally, give pertinent data on subsurface locations and measured and true vertical depths. Give blowout  
prevention program, if any.

24.

SIGNED John C. Corbett TITLE Vice President-Exploration DATE June 25, 1990

(This space for Federal or State office use)

PERMIT NO. \_\_\_\_\_ APPROVAL DATE \_\_\_\_\_

APPROVED BY \_\_\_\_\_ TITLE \_\_\_\_\_ DATE Ken Townsend

CONDITIONS OF APPROVAL, IF ANY:

*effa*

SMOCC

\*See Instructions On Reverse Side

Submit to Appropriate  
District Office  
State Lease - 4 copies  
Federal Lease - 3 copies

State of New Mexico  
Energy, Minerals and Natural Resources Department

Form C-102  
Revised 1-1-89

OIL CONSERVATION DIVISION

P.O. Box 2088  
Santa Fe, New Mexico 87504-2088

DISTRICT I  
P.O. Box 1980, Hobbs, NM 88240

DISTRICT II  
P.O. Drawer DD, Artesia, NM 88210

DISTRICT III  
1000 Rio Brazos Rd., Aztec, NM 87410

WELL LOCATION AND ACREAGE DEDICATION PLAT

All Distances must be from the outer boundaries of the section

Operator <b>HIXON DEVELOPMENT COMPANY</b>			Lease		Well No. <b>South Bisti # 17-0</b>
Unit Letter <b>O</b>	Section <b>17</b>	Township <b>25 North</b>	Range <b>12 West</b>	County <b>San Juan</b>	

Actual Footage Location of Well:					
950 feet from the		South	line and	2235 feet from the	East
Ground level Elev. <b>6267'</b>	Producing Formation <b>Gallup</b>		Pool <b>Bisti Lower Gallup</b>	Dedicated Acreage: <b>80</b> Acres	

1. Outline the acreage dedicated to the subject well by colored pencil or hatchure marks on the plat below.
2. If more than one lease is dedicated to the well, outline each and identify the ownership thereof (both as to working interest and royalty).
3. If more than one lease of different ownership is dedicated to the well, have the interest of all owners been consolidated by communization, unitization, force-pooling, etc?  
☐ Yes ☐ No If answer is "yes" type of consolidation \_\_\_\_\_  
If answer is "no" list the owners and tract descriptions which have actually been consolidated. (Use reverse side of this form if necessary.) \_\_\_\_\_  
No allowable will be assigned to the well until all interests have been consolidated (by communization, unitization, forced-pooling, or otherwise) or until a non-standard unit, eliminating such interest, has been approved by the Division.

**RECEIVED**  
NOV 9 1990  
OIL CON. DIV.  
DIST. 3

OPERATOR CERTIFICATION

I hereby certify that the information contained herein is true and complete to the best of my knowledge and belief.

Signature  
*John C. Corbett*  
Printed Name  
**John C. Corbett**  
Position  
**Vice President-Exploration**  
Company  
**Hixon Development Company**  
Date  
**March 1, 1990**

SURVEYOR CERTIFICATION

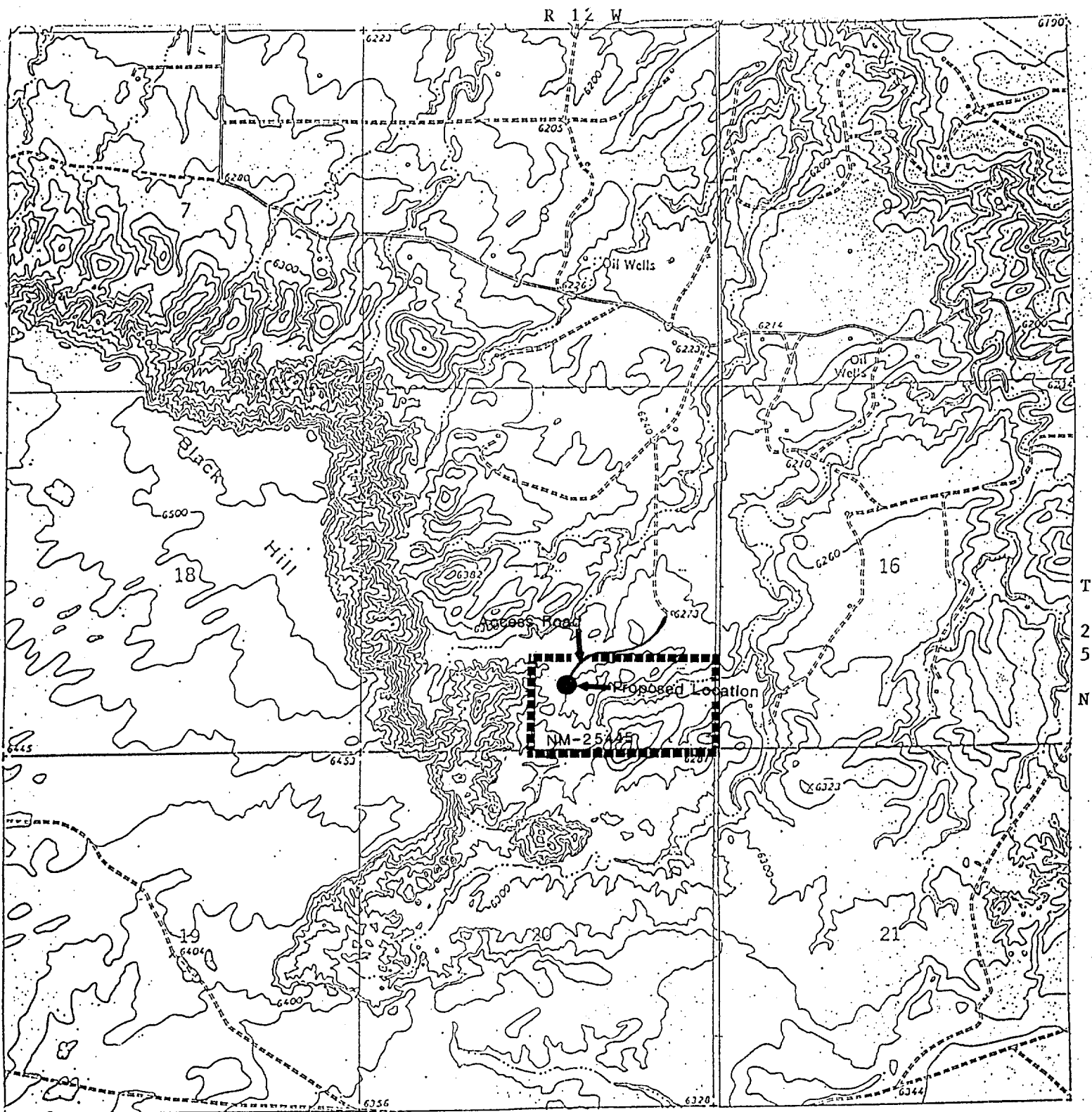
I hereby certify that the well location shown on this plat was plotted from field notes of actual surveys made by me or under my supervision, and that the same is true and correct to the best of my knowledge and belief.

Date Surveyed  
**1-21-90**  
Signature  
*George S. Huddleston*  
Professional Surveyor  
**6844**  
Certificate No.  
**6844**

950'

2235'

NM-25445



HIXON DEVELOPMENT COMPANY  
South Bisti No. 17-0  
950' FSL and 2235' FEL  
Section 17, T25N, R12W  
SAN JUAN COUNTY, NEW MEXICO