

UNITED STATES
DEPARTMENT OF THE INTERIOR
BUREAU OF LAND MANAGEMENT

APPLICATION FOR PERMIT TO DRILL, DEEPEN, OR PLUG BACK

1a. TYPE OF WORK

DRILL ☒

DEEPEN ☐

PLUG BACK ☐

b. TYPE OF WELL

OIL
WELL ☐

GAS
WELL ☒

OTHER

SINGLE
ZONE ☒

MULTIPLE
ZONE ☐

2. NAME OF OPERATOR

Giant Exploration & Production Company

3. ADDRESS OF OPERATOR

P. O. Box 2810, Farmington, New Mexico 87499

4. LOCATION OF WELL (Report location clearly and in accordance with any State requirements.)*
At surface

At proposed prod. zone
1030' FNL and 1580' FEL
Section 5, T25N, R11W, NMPM

14. DISTANCE IN MILES AND DIRECTION FROM NEAREST TOWN OR POST OFFICE*

19.4 miles south of Bloomfield, NM

15. DISTANCE FROM PROPOSED*

LOCATION TO NEAREST
PROPERTY OR LEASE LINE, FT.
(Also to nearest drlg. unit line, if any) 1030'

16. NO. OF ACRES IN LEASE

160.64

17. NO. OF ACRES ASSIGNED
TO THIS WELL

E/ 320.64

18. DISTANCE FROM PROPOSED LOCATION*
TO NEAREST WELL, DRILLING, COMPLETED,
OR APPLIED FOR, ON THIS LEASE, FT.

0

19. PROPOSED DEPTH

1400'

20. ROTARY OR CABLE TOOLS

Rotary

21. ELEVATIONS (Show whether DF, RT, GR, etc.)

This action is subject to technical and
procedural review pursuant to 43 CFR 3165.3
and appeal pursuant to 43 CFR 3165.4.

GLE-6258

22. APPROX. DATE WORK WILL START*

As soon as permitted

PROPOSED CASING AND CEMENTING PROGRAM

DRILLING OPERATIONS AUTHORIZED ARE

SIZE OF HOLE	SIZE OF CASING	WEIGHT PER FOOT	SETTING DEPTH	QUANTITY OF CEMENT ATTACHED
8-3/4"	7"	20#	110'	60 sks (1.18 ft ³ /sk)
				cmt to surface
6-1/4"	4-1/2"	10.5#	1400'	165 sks cmt to surface
				(85 sks - 2.06 ft ³ /sk)
				(80 sks - 1.18 ft ³ /sk)

It is proposed to drill the subject Basin Fruitland Coal Well. It will be evaluated on the basis of open hole logs. Please see attached Onshore Oil and Gas Order No. 1 data.

RECEIVED

FEB 08 1991

OIL CON. DIV.
DIST. 3

IN ABOVE SPACE DESCRIBE PROPOSED PROGRAM: If proposal is to deepen or plug back, give data on present productive zone and proposed new productive zone. If proposal is to drill or deepen directionally, give pertinent data on subsurface locations and measured and true vertical depths. Give blowout preventer program, if any.

24.

SIGNED

John C. Corbett
John C. Corbett

TITLE Vice President-Exploration

DATE November 13, 1990

(This space for Federal or State office use)

APPROVED
AS AMENDED

PERMIT NO.

APPROVAL DATE

APPROVED BY

TITLE

DATE FEB 01 1991

CONDITIONS OF APPROVAL, IF ANY:

John C. Corbett
AREA MANAGER

*See Instructions On Reverse Side

Submit to Appropriate
District Office
State Lease - 4 copies
Fee Lease - 3 copies

State of New Mexico
Energy, Minerals and Natural Resources Department

Form C-102
Revised 1-1-89

OIL CONSERVATION DIVISION

P.O. Box 2088
Santa Fe, New Mexico 87504-2088

DISTRICT I
P.O. Box 1980, Hobbs, NM 88240

DISTRICT II
P.O. Drawer DD, Artesia, NM 88210

DISTRICT III
1000 Rio Brazos Rd., Aztec, NM 87410

WELL LOCATION AND ACREAGE DEDICATION PLAT

All Distances must be from the outer boundaries of the section

Operator Giant Exploration & Production Company			Lease Buena Suerte 5 B Com		Well No. 1
Unit Letter B	Section 5	Township 25 North	Range 11 West	County San Juan	
Actual Footage Location of Well: 1030 feet from the North line and 1580 feet from the East line					
Ground level Elev. 6258	Producing Formation Fruitland			Pool Basin Fruitland Coal	Dedicated Acreage 320 Acres

1. Outline the acreage dedicated to the subject well by colored pencil or hatchure marks on the plat below.

2. If more than one lease is dedicated to the well, outline each and identify the ownership thereof (both as to working interest and royalty).

3. If more than one lease of different ownership is dedicated to the well, have the interest of all owners been consolidated by communitization, unitization, force-pooling, etc.?

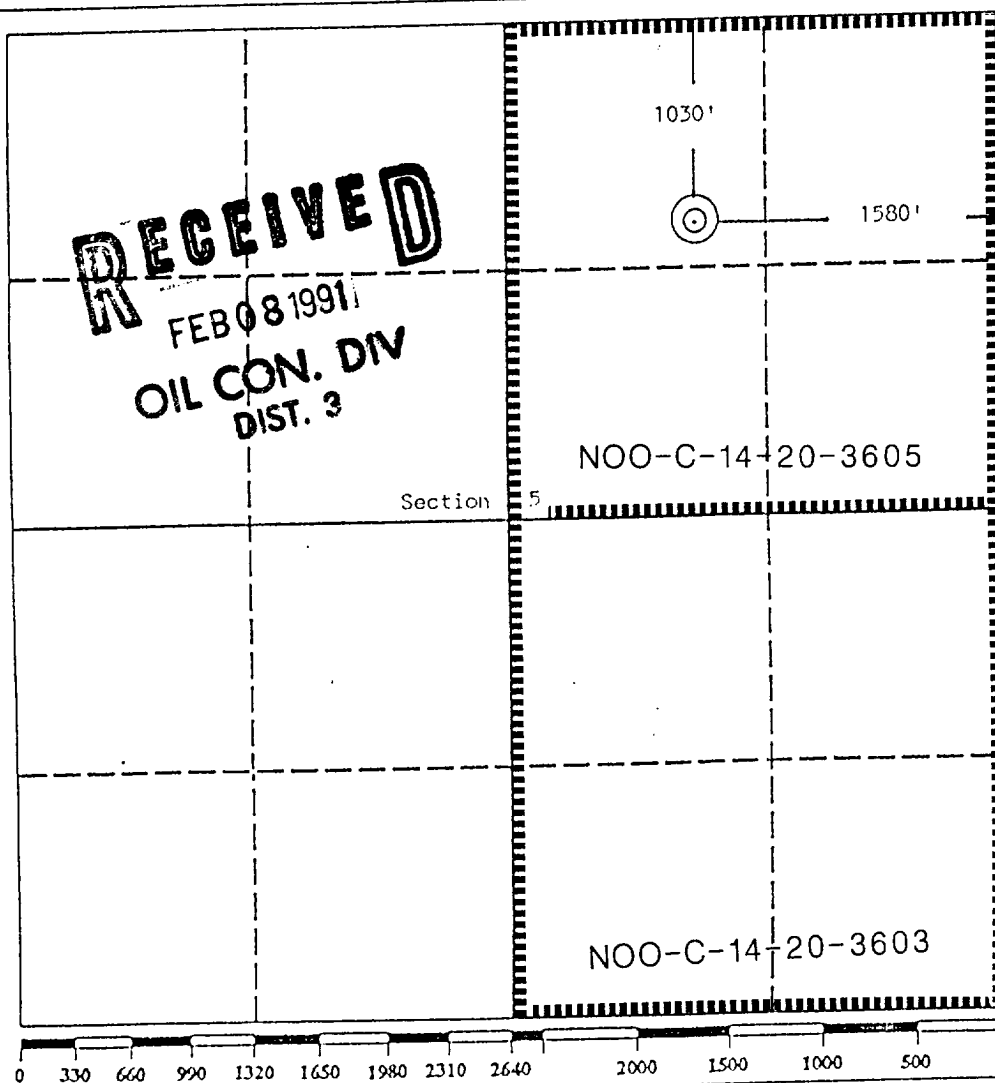
☐ Yes

☒ No

If answer is "yes" type of consolidation

If answer is "no" list the owners and tract descriptions which have actually been consolidated. (Use reverse side of this form if necessary. Leases will be consolidated.

No allowable will be assigned to the well until all interests have been consolidated (by communitization, unitization, forced-pooling, or otherwise) or until a non-standard unit, eliminating such interest, has been approved by the Division.



OPERATOR CERTIFICATION

I hereby certify that the information contained herein is true and complete to the best of my knowledge and belief.

Signature

Printed Name

John C. Corbett

Position

Vice President - Exploration

Company

Giant Exploration & Production Co.

Date

November 6, 1990

SURVEYOR CERTIFICATION

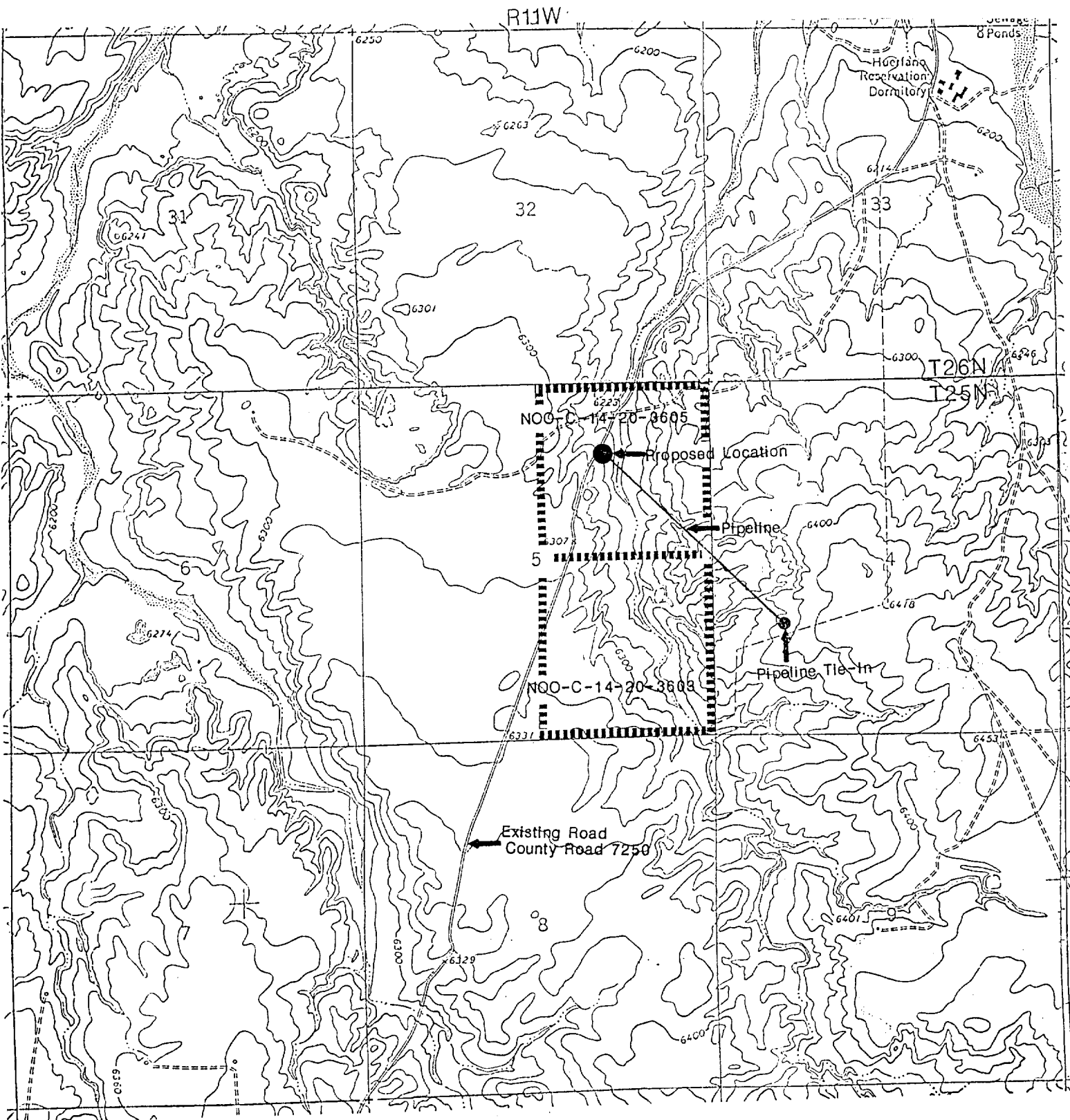
I hereby certify that the well location shown on this plat was plotted from field notes of actual surveys made by me or under my supervision, and that the same is true and correct to the best of my knowledge and belief.

Date Surveyed

August 6, 1990

Signature & Seal of Professional Surveyor

EDGAR L. RISENHOVER
NEW MEXICO
Edgar L. Risenhover
Certificate No. 5979
Edgar L. Risenhover



GIANT EXPLORATION & PRODUCTION COMPANY

Buena Suerte 5B Com No. 1
 1030' FNL 1580' FEL
 Section 5, T25N, R11W
 San Juan County, New Mexico