

UNITED STATES
DEPARTMENT OF THE INTERIOR
BUREAU OF LAND MANAGEMENT

30-045-28555

APPLICATION FOR PERMIT TO DRILL, DEEPEN, OR PLUG BACK

1a. TYPE OF WORK

DRILL ☒

DEEPEN ☐

PLUG BACK ☐

b. TYPE OF WELL

OIL
WELL ☐

GAS
WELL ☒

OTHER

SINGLE
ZONE ☒

MULTIPLE
ZONE ☐

2. NAME OF OPERATOR

Giant Exploration & Production Company

3. ADDRESS OF OPERATOR

P. O. Box 2810, Farmington, New Mexico 87499

4. LOCATION OF WELL (Report location clearly and in accordance with any State requirements.)*

At surface

790' FSL and 1850' FWL

At proposed prod. zone Section 12, T25N, R13W, NMPM

14. DISTANCE IN MILES AND DIRECTION FROM NEAREST TOWN OR POST OFFICE*

23 miles south of Farmington, NM

15. DISTANCE FROM PROPOSED*

LOCATION TO NEAREST
PROPERTY OR LEASE LINE, FT.
(Also to nearest drilg. unit line, if any)

900'

16. NO. OF ACRES IN LEASE

720.00

18. DISTANCE FROM PROPOSED LOCATION*

TO NEAREST WELL, DRILLING, COMPLETED,
OR APPLIED FOR, ON THIS LEASE, FT.

2600'

19. PROPOSED DEPTH

1500'

17. NO. OF ACRES ASSIGNED
TO THIS WELL

5/320

21. ELEVATIONS (Show whether DF, RT, GR, etc.)

This action is subject to technical and
procedural review pursuant to 43 CFR 3165.3

GLE 6442

and appeal pursuant to 43 CFR 3165.4. PROPOSED CASING AND CEMENTING PROGRAM

SIZE OF HOLE	SIZE OF CASING	WEIGHT PER FOOT	SETTING DEPTH
8-3/4"	7"	20#	110'
6-1/4"	4-1/2"	10.5#	1500'

20. ROTARY OR CABLE TOOLS

Rotary

22. APPROX. DATE WORK WILL START*

As soon as permitted

DRILLING OPERATIONS AUTHORIZED ARE
SUBJECT TO COMPLIANCE WITH ATTACHED

"GENERAL REQUIREMENTS"

60 sks (1.18 ft³/sk)

cmt to surface

175 sks cmt to surface

(85 sks - 2.06 ft³/sk)

(90 sks - 1.18 ft³/sk)

It is proposed to drill the subject Basin Fruitland Coal well. It will be evaluated on the basis of open hole logs. Please see attached Onshore Oil and Gas Order No. 1 data.

RECEIVED

JUN 6 1991

OIL CON. DIV.
DIST. 3

IN ABOVE SPACE DESCRIBE PROPOSED PROGRAM: If proposal is to deepen or plug back, give data on present productive zone and proposed new productive zone. If proposal is to drill or deepen directionally, give pertinent data on subsurface locations and measured and true vertical depths. Give blowout preventer program, if any.

24.

SIGNED

John C. Corbett

TITLE Vice President-Exploration

DATE October 10, 1990

(This space for Federal or State office use)

PERMIT NO.

APPROVAL DATE

APPROVED
AS AMENDED

APPROVED BY

CONDITIONS OF APPROVAL, IF ANY:

TITLE

Hold C-104 to Cancel Dugone JETER Corn #2 NMOCD

JUN 4 1991
AREA MANAGER

*See Instructions On Reverse Side

Title 18 U.S.C. Section 1001, makes it a crime for any person knowingly and willfully to make to any department or agency of the

Submit to Appropriate
District Office
State Lease - 4 copies
Fee Lease - 3 copies

State of New Mexico
Energy, Minerals and Natural Resources Department

Form C-102
Revised 1-1-89

OIL CONSERVATION DIVISION

DISTRICT I
P.O. Box 1980, Hobbs, NM 88240

P.O. Box 2088
Santa Fe, New Mexico 87504-2088

DISTRICT II
P.O. Drawer DD, Artesia, NM 88210

DISTRICT III
1000 Rio Brazos Rd., Aztec, NM 87410

WELL LOCATION AND ACREAGE DEDICATION PLAT

All Distances must be from the outer boundaries of the section

Operator Giant Exploration & Production Company			Lease West Dist Coal 12		Well No. 1
Unit Letter N	Section 12	Township 25 North	Range 13 West	County San Juan	
Actual Footage Location of Well: 790 feet from the South line and 1850 feet from the West line					
Ground level Elev. 6442	Producing Formation Fruitland		Pool Basin Fruitland Coal	Dedicated Acreage: 320 Acres	

1. Outline the acreage dedicated to the subject well by colored pencil or hatchure marks on the plat below.
2. If more than one lease is dedicated to the well, outline each and identify the ownership thereof (both as to working interest and royalty).
3. If more than one lease of different ownership is dedicated to the well, have the interest of all owners been consolidated by communitization, unitization, force-pooling, etc.?
☐ Yes ☐ No If answer is "yes" type of consolidation _____
If answer is "no" list the owners and tract descriptions which have actually been consolidated. (Use reverse side of this form if necessary.) _____
No allowable will be assigned to the well until all interests have been consolidated (by communitization, unitization, forced-pooling, or otherwise) or until a non-standard unit, eliminating such interest, has been approved by the Division.

OPERATOR CERTIFICATION

I hereby certify that the information contained herein is true and complete to the best of my knowledge and belief.

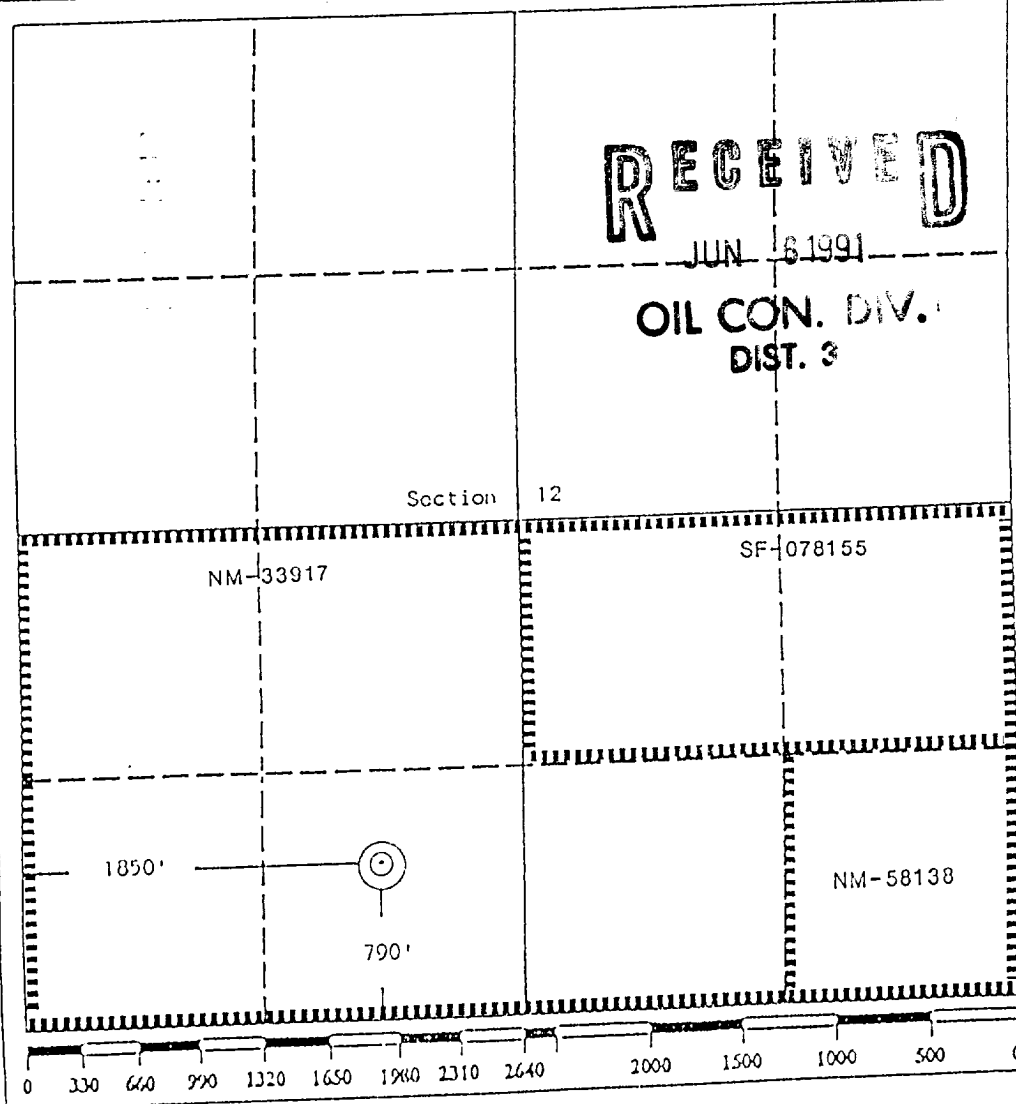
Signature John C. Corbett
Printed Name John C. Corbett
Position Vice President - Exploration
Company Giant Exploration & Production Co.
Date September 17, 1990

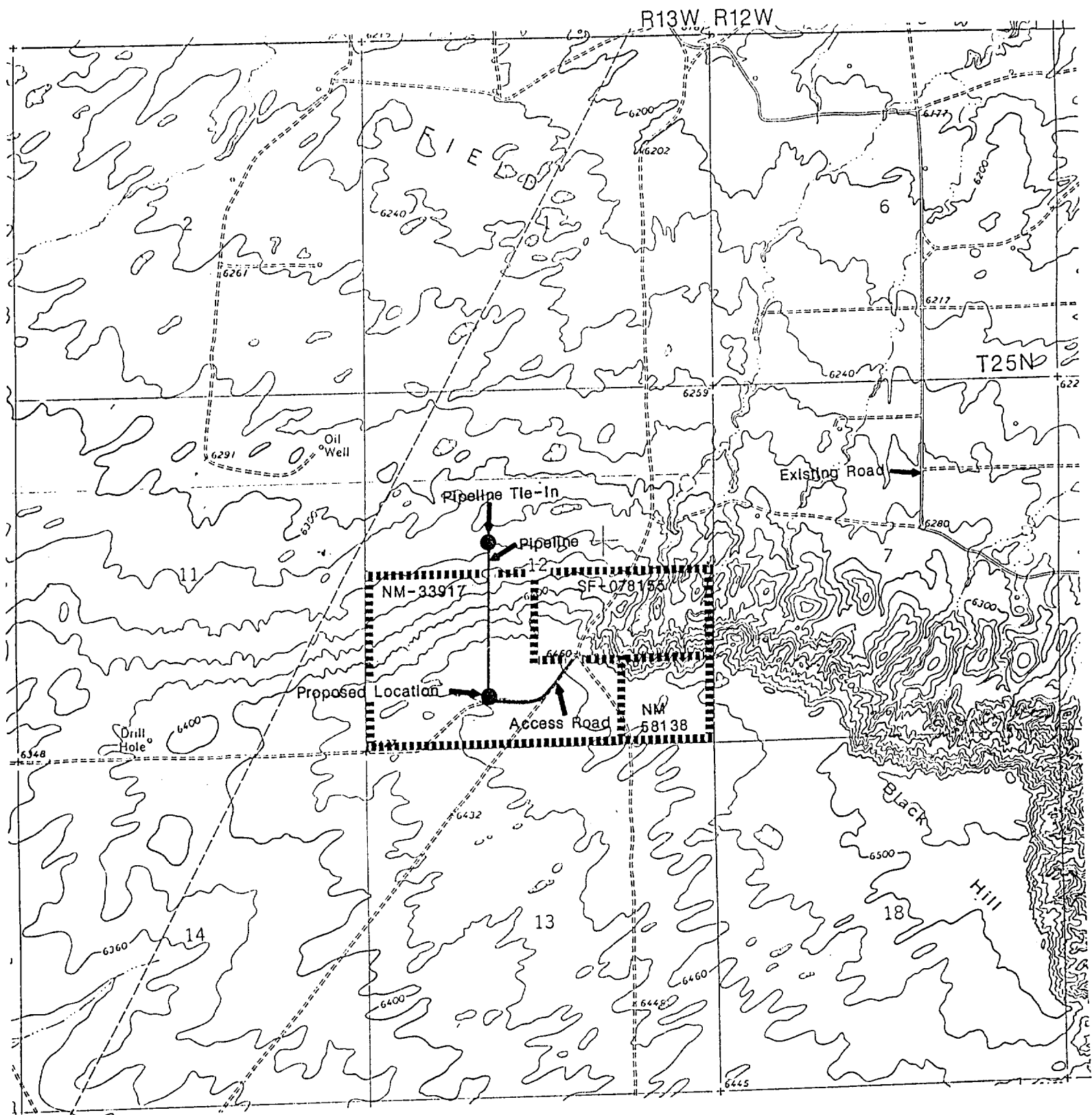
SURVEYOR CERTIFICATION

I hereby certify that the well location shown on this plat was plotted from field notes of actual surveys made by me or under my supervision, and that the same is true and correct to the best of my knowledge and belief.

Date Surveyed
September 11, 1990

Signature & Seal of Professional Surveyor
Edgar L. Risenhoover
Certificate No. 5979
Edgar L. Risenhoover, P.S.





GIANT EXPLORATION & PRODUCTION COMPANY

West Bisti Coal 12 No. 1
 790' FSL and 1850' FWL
 Section 12, T25N, R13W
 San Juan County, New Mexico