

1 - WIOs  
4 - Tribal TrustUNITED STATES  
DEPARTMENT OF THE INTERIOR  
GEOLOGICAL SURVEY

3-045-28587

## APPLICATION FOR PERMIT TO DRILL, DEEPEN, OR PLUG BACK

## 1a. TYPE OF WORK

DRILL ☒DEEPEN ☐PLUG BACK ☐

## b. TYPE OF WELL

OIL  
WELL ☐GAS  
WELL ☒

OTHER

SINGLE  
ZONE ☒MULTIPLE  
ZONE ☐

## 2. NAME OF OPERATOR

DUGAN PRODUCTION CORP. 6515

## 3. ADDRESS OF OPERATOR

P.O. Box 420, Farmington, NM 87499

## 4. LOCATION OF WELL (Report location clearly and in accordance with any State requirements.)\*

At surface

790' FNL &amp; 1350' FEL

At proposed prod. zone

## 14. DISTANCE IN MILES AND DIRECTION FROM NEAREST TOWN OR POST OFFICE\*

approx. 6 miles Southwest of EPNG Chaco Plant, NM

## 15. DISTANCE FROM PROPOSED\*

LOCATION TO NEAREST  
PROPERTY OR LEASE LINE, FT.  
(Also to nearest drig. unit line, if any)

790'

## 18. DISTANCE FROM PROPOSED LOCATION\*

TO NEAREST WELL, DRILLING, COMPLETED  
OR APPLIED FOR, ON THIS LEASE, FT. DPC's Salge Fed.2513' from  
DPC's Salge Fed.

## 16. NO. OF ACRES IN LEASE

479.05

## 19. PROPOSED DEPTH

1355'

17. NO. OF ACRES ASSIGNED  
TO THIS WELL

320 214.53

## 20. ROTARY OR CABLE TOOLS

Rotary

## 21. ELEVATIONS (Show whether DK, RL, GR, etc.)

6283' GL

## 22. APPROX. DATE WORK WILL START\*

ASAP

## 23.

PROPOSED

## NG PROGRAM

SIZE OF HOLE	SIZE OF CASING	WEI
9-7/8"	7"	
6-1/4"	4 1/2"	

DEPTH	QUANTITY OF CEMENT
	40 sx (48 cf) circ.to surf.
	120 sx (207 cf) circ.to surf.

Plan to drill a 9-7/8" hole and set 20#, J-55 surface casing; then plan to drill a 6-1/4" hole to total depth with gel-water-mud program to test Fruitland Coal formation. Plan to run IES and CDL logs. If determined productive, will run 4 1/2", 10.5#, J-55 casing, selectively perforate, frac, clean out after frac and complete well.

RECEIVED

SEP 12 1991.

OIL CON. DIV.  
DIST. 3

\*Notice of Staking submitted as "91".

IN ABOVE SPACE DESCRIBE PROPOSED PROGRAM: If proposal is to deepen or plug back, give data on present productive zone and proposed new productive zone. If proposal is to drill or deepen directionally, give pertinent data on subsurface locations and measured and true vertical depths. Give blowout preventer program, if any.

24.

SIGNED

Sherman E. Dugan

TITLE

Vice President

DATE

9-6-90

(This space for Federal or State office use)

PERMIT NO.

APPROVAL DATE

APPROVED  
AS AMENDED

APPROVED BY

TITLE

CONDITIONS OF APPROVAL, IF ANY:

NMOOD

\*See Instructions On Reverse Side

SEP 11 1991  
AREA MANAGER

Submit to Appropriate  
District Office  
State Lease - 4 copies  
Fee Lease - 3 copies

State of New Mexico  
Energy, Minerals and Natural Resources Department

Form C-102  
Revised 1-1-89

OIL CONSERVATION DIVISION

P.O. Box 2088  
Santa Fe, New Mexico 87504-2088

DISTRICT I  
P.O. Box 1980, Hobbs, NM 88240

DISTRICT II  
P.O. Drawer DD, Artesia, NM 88210

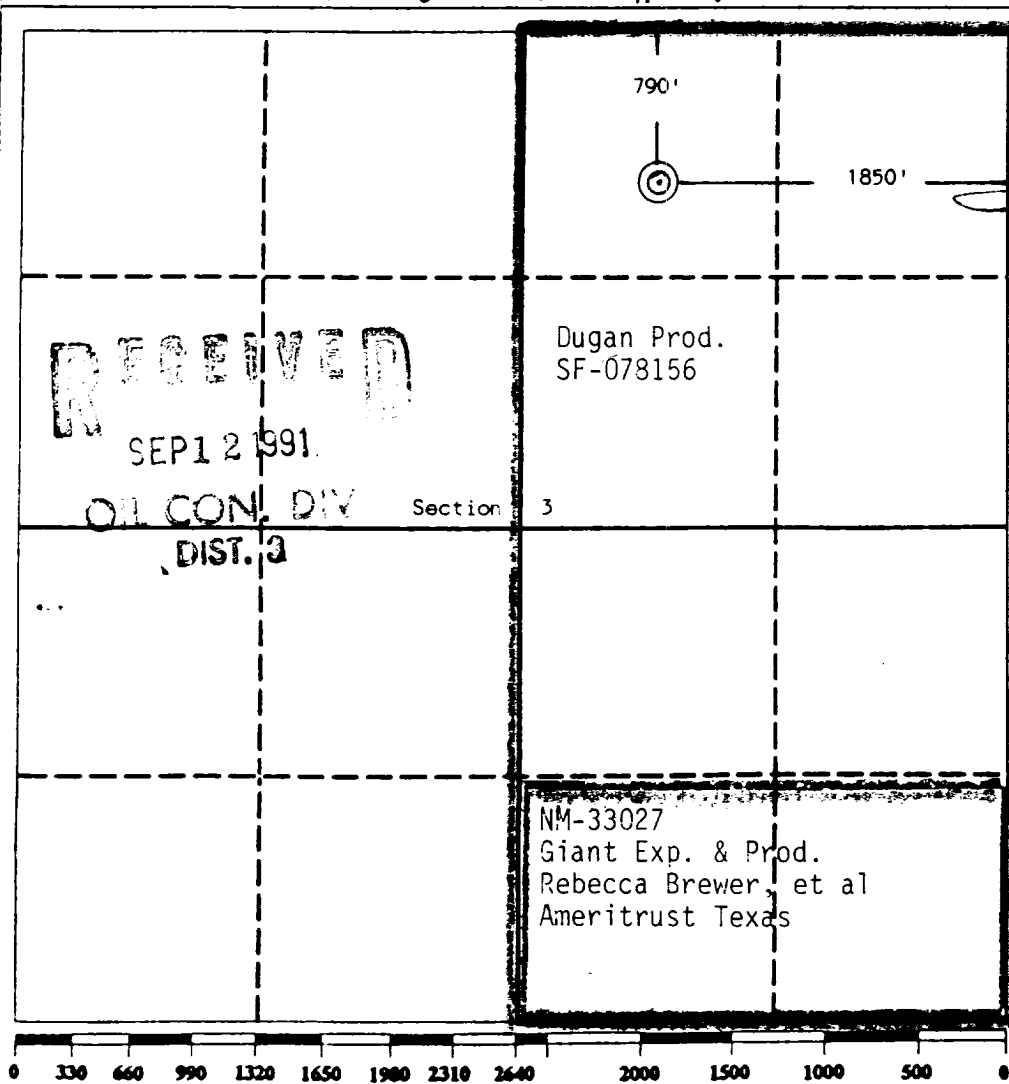
DISTRICT III  
1000 Rio Brazos Rd., Aztec, NM 87410

WELL LOCATION AND ACREAGE DEDICATION PLAT

All Distances must be from the outer boundaries of the section

Operator Dugan Production Corporation			Lease Salge Federal "A" Com		Well No. 90
Unit Letter B	Section 3	Township 25 North	Range 13 West	County San Juan	
Actual Footage Location of Well: 790 feet from the North line and 1850 feet from the East line					
Ground level Elev. 6283'	Producing Formation Fruitland Coal		Pool Basin Fruitland Coal		Dedicated Acreage: 320.5753 Acres

- Outline the acreage dedicated to the subject well by colored pencil or hatchure marks on the plat below.
- If more than one lease is dedicated to the well, outline each and identify the ownership thereof (both as to working interest and royalty).
- If more than one lease of different ownership is dedicated to the well, have the interest of all owners been consolidated by communitization, unitization, force-pooling, etc?  
☒ Yes ☐ No If answer is "yes" type of consolidation will be communitized  
If answer is "no" list the owners and tract descriptions which have actually been consolidated. (Use reverse side of this form if necessary.)  
No allowable will be assigned to the well until all interests have been consolidated (by communitization, unitization, forced-pooling, or otherwise) or until a non-standard unit, eliminating such interest, has been approved by the Division.



OPERATOR CERTIFICATION

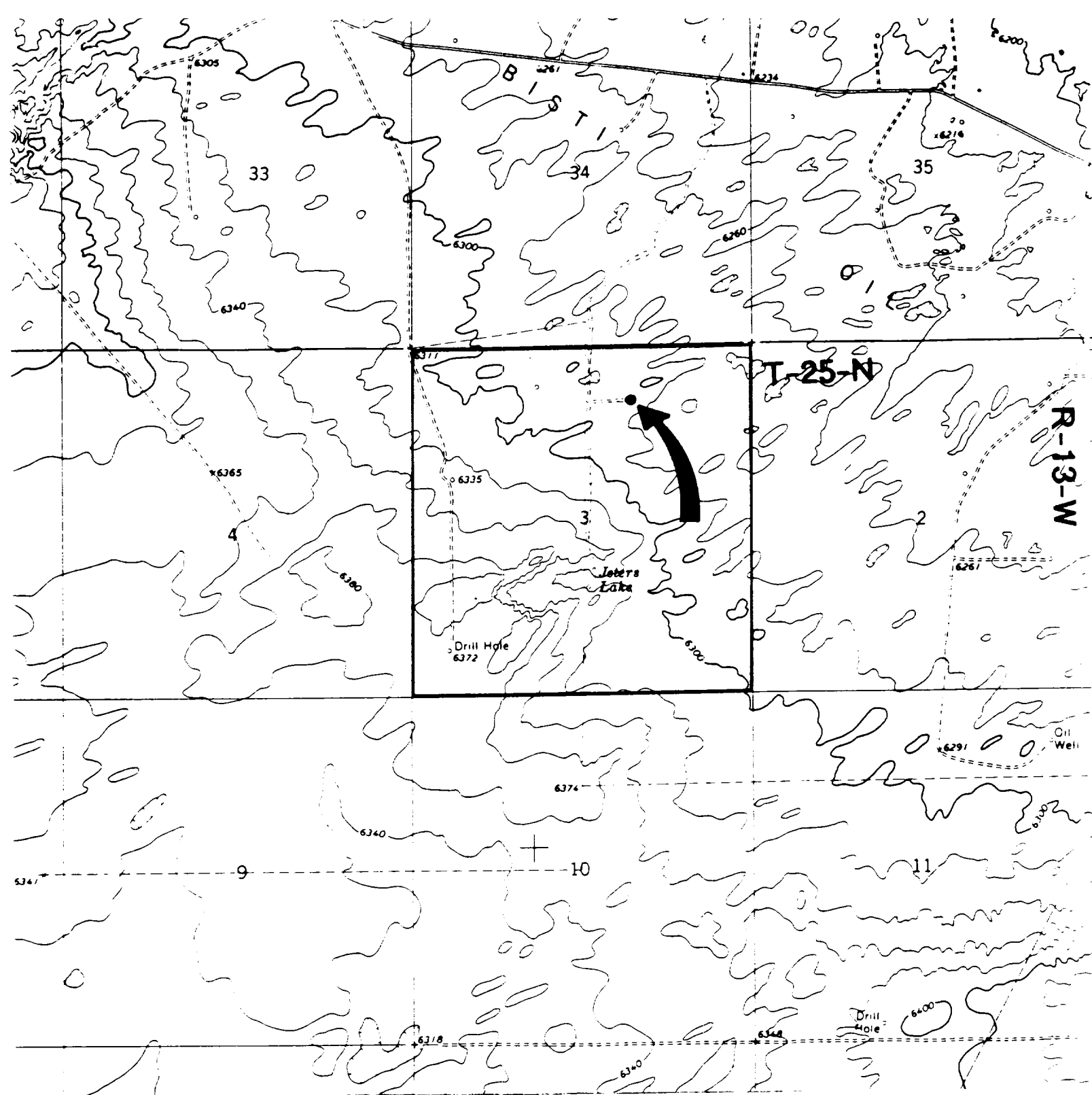
I hereby certify that the information contained herein is true and complete to the best of my knowledge and belief.

Signature  
Sherman E. Dugan  
Printed Name  
Sherman E. Dugan  
Position  
Vice President  
Company  
Dugan Production Corp.  
Date  
9-6-90

SURVEYOR CERTIFICATION

I hereby certify that the well location shown on this plat was plotted from field notes of actual surveys made by me or under my supervision, and that the same is true and correct to the best of my knowledge and belief.

Date Surveyed  
August 23, 1990  
Signature & Seal of Professional Surveyor  
Edgar L. Risenhoover  
NEW MEXICO  
1979  
Edgar L. Risenhoover



DUGAN PRODUCTION CORP. - Salge Federal "A" Com #90

Existing Roads

Exhibit E

Vicinity of nearest town or reference pt.  
approx. 6 miles SW of EPNG Chaco Plant

Type of surface dirt

Conditions good

Other

Reference map USGS map

Moncisco Wash, N.Mex. 1966

Planned Access Road(s)

Exhibit E

Width 14' Maximum grades 2%

Drainage design as required

Cuts & Fills see diagram

Surfacing material none

Turnouts Waterbars

Culverts

Gates

Cattleguards

Fence cuts

Access road(s) do/do not cross (Fed/Ind land.