

UNITED STATES  
DEPARTMENT OF THE INTERIOR  
BUREAU OF LAND MANAGEMENT

APPLICATION FOR PERMIT TO DRILL, DEEPEN, OR PLUG BACK

1a. TYPE OF WORK

DRILL ☒

DEEPEN ☐

PLUG BACK ☐

b. TYPE OF WELL

OIL  
WELL ☐

GAS  
WELL ☒

OTHER

SINGLE  
ZONE ☒

MULTIPLE  
ZONE ☐

2. NAME OF OPERATOR

Giant Exploration & Production Company 8987

3. ADDRESS OF OPERATOR

P. O. Box 2810, Farmington, NM 87499 (505) 326-3325

4. LOCATION OF WELL (Report location clearly and in accordance with any State requirements.)

At surface 2400' 1540' FNL and 865' FEL 1820' FEL

At proposed prod. zone Section 3, T25N, R11W, NMPM

14. DISTANCE IN MILES AND DIRECTION FROM NEAREST TOWN OR POST OFFICE\*

20 miles South of Bloomfield, NM

10. DISTANCE FROM PROPOSED\*

LOCATION TO NEAREST  
PROPERTY OR LEASE LINE, FT.  
(Also to nearest drlg. unit line, if any) 865'

16. NO. OF ACRES IN LEASE

160.81

17. NO. OF ACRES ASSIGNED  
TO THIS WELL

320.81

13. DISTANCE FROM PROPOSED LOCATION\*  
TO NEAREST WELL, DRILLING, COMPLETED,  
OR APPLIED FOR, ON THIS LEASE, FT.

110'

19. PROPOSED DEPTH

1600'

20. ROTARY OR CABLE TOOLS

Rotary

21. ELEVATIONS (Show whether DF, RT, GR, etc.)

6245

6235'

GLE This action is subject to technical and  
procedural review pursuant to 43 CFR 3165.3  
and appeal pursuant to 43 CFR 3165.4.  
PROPOSED CASING AND CEMENTING PROGRAM

22. APPROX. DATE WORK WILL START\*

As soon as permitted

23.

SIZE OF HOLE	SIZE OF CASING	WEIGHT PER FOOT	SETTING DEPTH	QUANTITY OF CEMENT
8 - 3/4"	7"	20#	110'	60 sks (1.18 ft <sup>3</sup> /sk) cement to surface
6 - 1/4"	4 - 1/2"	9.5#	1600'	190 sks cement to surface
				(90 sks - 2.06 ft <sup>3</sup> /sk)
				(100 sks - 1.18 ft <sup>3</sup> /sk)

It is proposed to drill the subject Basin Fruitland Coal gas well. It will be evaluated on the basis of open hole logs. Please see attached Onshore Oil and Gas Order No. 1 data.

"Approval of this action does  
not warrant that the applicant  
holds legal or equitable rights  
or title to this lease."

RECEIVED  
JAN 4 1992  
OIL CON. DIV.  
DIST. 3

IN ABOVE SPACE DESCRIBE PROPOSED PROGRAM: If proposal is to deepen or plug back, give data on present productive zone and proposed new productive zone. If proposal is to drill or deepen directionally, give pertinent data on subsurface locations and measured and true vertical depths. Give blowout preventer program, if any.

24.

SIGNED

John C. Corbett

TITLE Executive Vice President

DATE May 29, 1991

(This space for Federal or State office use)

PERMIT NO.

APPROVAL DATE

APPROVED BY

TITLE

CONDITIONS OF APPROVAL, IF ANY:

APPROVED  
AS AMENDED

AREA MANAGER

\*See Instructions On Reverse Side

11412-12  
2011  
VIO 200 JC  
E. 100

Submit to Appropriate  
District Office  
State Lease - 4 copies  
Fee Lease - 3 copies

State of New Mexico  
Energy, Minerals and Natural Resources Department

Form C-102  
Revised 1-1-89

OIL CONSERVATION DIVISION

P.O. Box 2088

Santa Fe, New Mexico 87504-2088

RECEIVED  
BLM

91 OCT 16 AM 8:06

DISTRICT I

P.O. Box 1980, Hobbs, NM 88240

DISTRICT II

P.O. Drawer DD, Artesia, NM 88210

DISTRICT III

1000 Rio Brazos Rd., Aztec, NM 87410

WELL LOCATION AND ACREAGE DEDICATION PLAT

All Distances must be from the outer boundaries of the section

025 PARKINGTON, N.M.

Operator Giant Exploration & Production Company			Lease Buena Suerte 3G Com		Well No. 1
Unit Letter G	Section 3	Township 25 North	Range 11 West	County NMPM	San Juan
Actual Footage Location of Well: 2400 feet from the North line and 1820 feet from the East line					
Ground level Elev. 6245	Producing Formation Fruitland		Pool Basin Fruitland Coal		Dedicated Acreage: 320.4 Acres

1. Outline the acreage dedicated to the subject well by colored pencil or hatchure marks on the plat below.

2. If more than one lease is dedicated to the well, outline each and identify the ownership thereof (both as to working interest and royalty).

3. If more than one lease of different ownership is dedicated to the well, have the interest of all owners been consolidated by communitization, unitization, force-pooling, etc.?

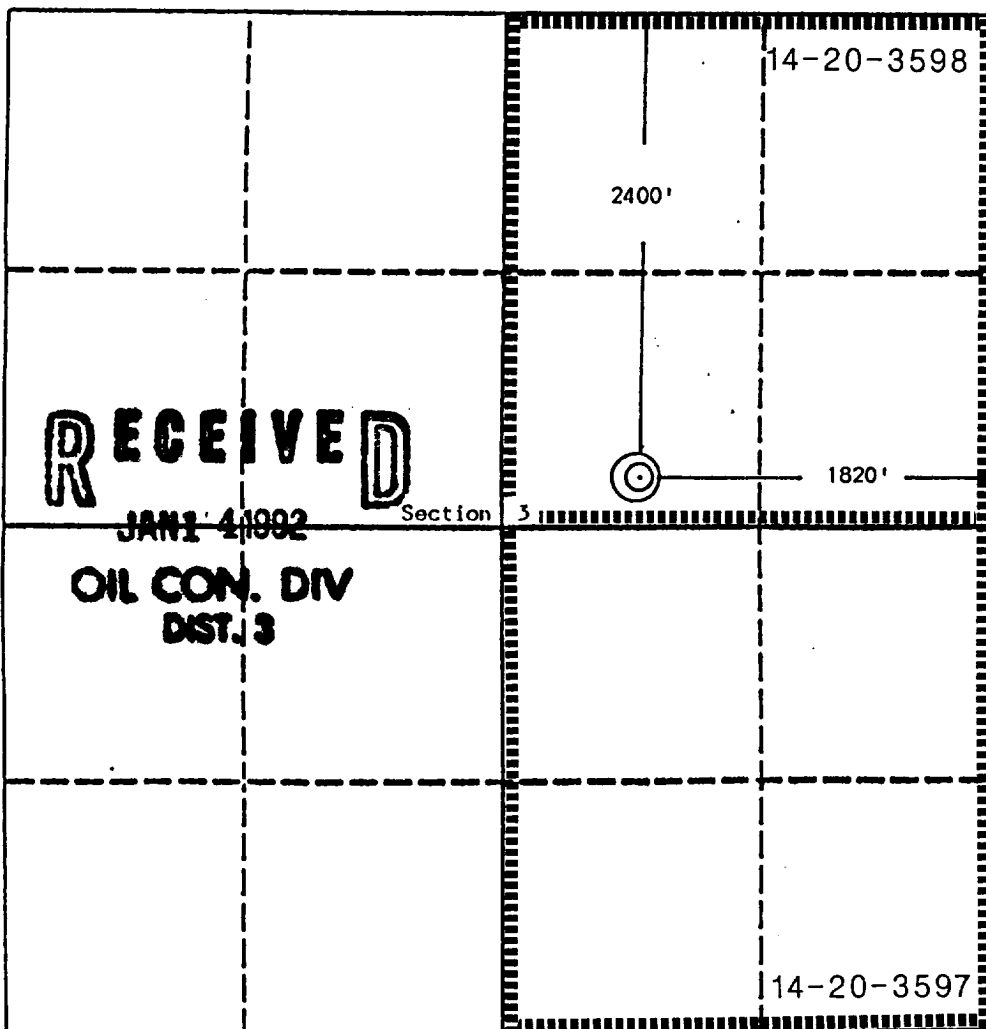
☐ Yes

☒ No

If answer is "yes" type of consolidation Leases will be consolidated

If answer is "no" list the owners and tract descriptions which have actually been consolidated. (Use reverse side of this form if necessary.)

No allowable will be assigned to the well until all interests have been consolidated (by communitization, unitization, forced-pooling, or otherwise) or until a non-standard unit, eliminating such interest, has been approved by the Division.



OPERATOR CERTIFICATION

I hereby certify that the information contained herein is true and complete to the best of my knowledge and belief.

Signature

*John C. Corbett*

Printed Name

John C. Corbett

Position

Executive Vice President

Company

Giant Exploration & Production Co.

Date

October 7, 1991

SURVEYOR CERTIFICATION

I hereby certify that the well location shown on this plat was plotted from field notes of actual surveys made by me or under my supervision, and that the same is true and correct to the best of my knowledge and belief.

Date Surveyed

September 23, 1991

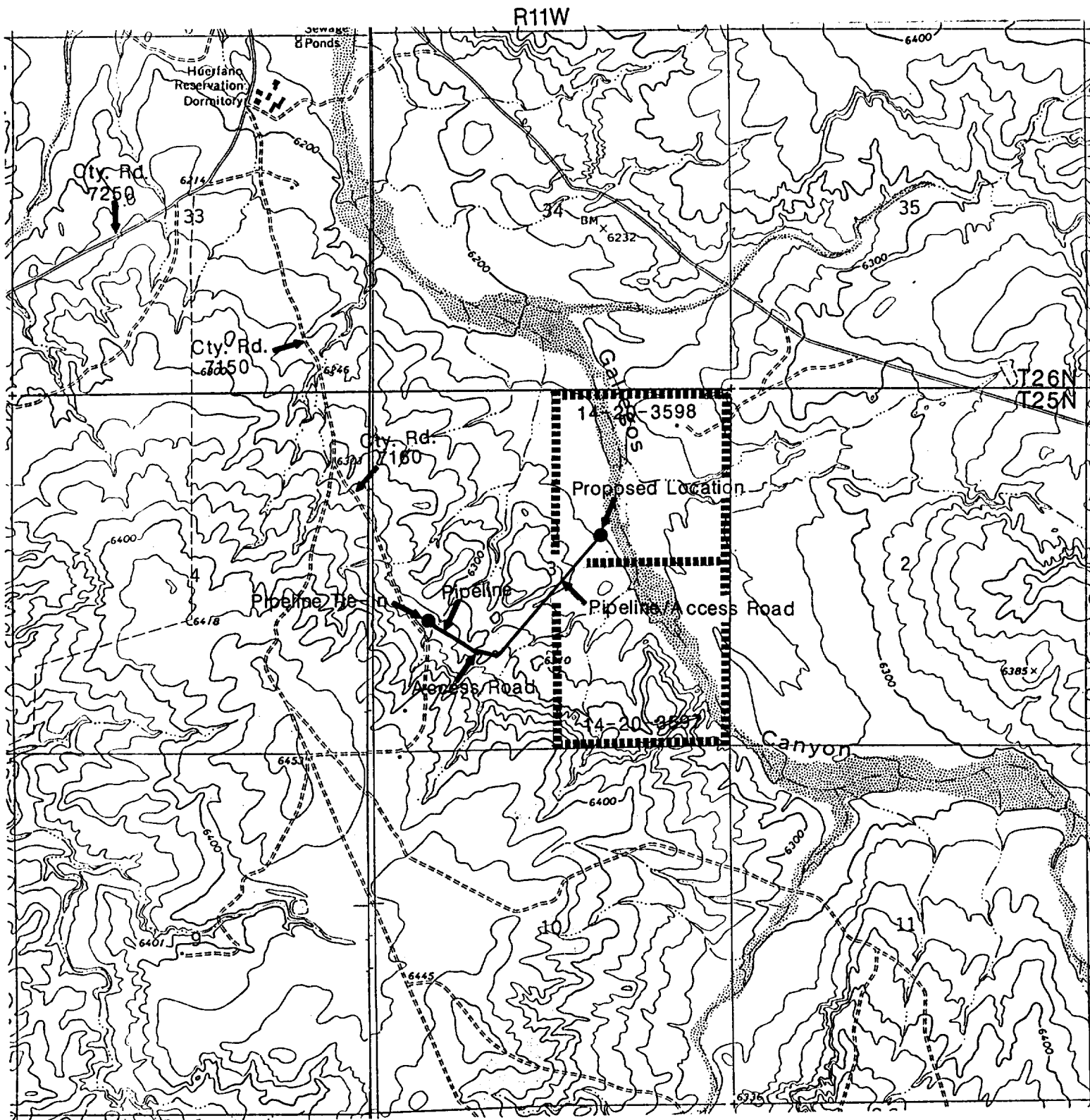
Signature & Seal of Professional Surveyor

*Edgar L. Risenhoover*

Certificate No. 5979

Edgar L. Risenhoover, P.S.

401302 (0  
20  
2007 1741  
VIA MO3 110  
2.124



GIANT EXPLORATION & PRODUCTION COMPANY

Buena Suerte 3G Com No. 1  
 2400' FNL 1820' FEL  
 Section 3, T25N, R11W  
 San Juan County, New Mexico