

- Tribal Trust
- Working Interest Owners

UNITED STATES
DEPARTMENT OF THE INTERIOR
GEOLOGICAL SURVEY

90-045-25662

APPLICATION FOR PERMIT TO DRILL, DEEPEN, OR PLUG BACK

1a. TYPE OF WORK

DRILL ☒

DEEPEN ☐

PLUG BACK ☐

b. TYPE OF WELL

OIL
WELL ☐

GAS
WELL ☒

OTHER

SINGLE
ZONE ☒

MULTIPLE
ZONE ☐

2. NAME OF OPERATOR

DUGAN PRODUCTION CORP.

3. ADDRESS OF OPERATOR

P.O. Box 420, Farmington, NM 87499

4. LOCATION OF WELL (Report location clearly and in accordance with any State requirements.)

At surface
1450' FSL & 840' FWL
At proposed prod. zone

14. DISTANCE IN MILES AND DIRECTION FROM NEAREST TOWN OR POST OFFICE*

Approx. 7 miles SW of EPNG Chaco Plant, NM

15. DISTANCE FROM PROPOSED*

LOCATION TO NEAREST
PROPERTY OR LEASE LINE, FT.
(Also to nearest dirg. unit line, if any)

180'

16. NO. OF ACRES IN LEASE

399.55

18. DISTANCE FROM PROPOSED LOCATION*

TO NEAREST WELL, DRILLING, COMPLETED,
OR APPLIED FOR, ON THIS LEASE, FT.

19. PROPOSED DEPTH

1510'

17. NO. OF ACRES ASSIGNED
TO THIS WELL

320 319.55

20. ROTARY OR CABLE TOOLS

Rotary

21. ELEVATIONS (Show whether DF, RT, GR, etc.)

6381' GL

This action is subject to technical and
procedural review pursuant to 43 CFR 3185.3

22. APPROX. DATE WORK WILL START*

ASAP

23. PROPOSED CASING AND CEMENTING PROGRAM

DRILLING OPERATIONS AUTHORIZED ARE
SUBJECT TO COMPLIANCE WITH ATTACHED
"GENERAL REQUIREMENTS"

SIZE OF HOLE	SIZE OF CASING	WEIGHT PER FOOT	SETTING DEPTH	
9-7/8"	7"	20#	90'	40 sx (48 cf) circ. to surface
6-1/4"	4 1/2"	10.5#	1510'	130 sx (229 cf) circ. to surface

Plan to drill a 9-7/8" hole and set 90' of 7" OD, 20#, J-55 surface casing; then plan to drill a 6-1/4" hole to total depth with gel-water-mud program to test Fruitland Coal formation. Plan to run IES and CDL logs. If determined productive, will run 4 1/2", 10.5#, J-55 casing, selectively perforate, frac, clean out after frac and complete well.

RECEIVED

APR 2 0 1992

OIL CON. DIV.
DIST. 3

*Previously submitted as Salge #90

IN ABOVE SPACE DESCRIBE PROPOSED PROGRAM: If proposal is to deepen or plug back, give data on present productive zone and proposed new productive zone. If proposal is to drill or deepen directionally, give pertinent data on subsurface locations and measured and true vertical depths. Give blowout preventer program, if any.

34.

SIGNED Sherman E. Dugan
Sherman E. Dugan

TITLE Vice-President

DATE 9-11-90

(This space for Federal or State office use)

PERMIT NO.

APPROVAL DATE

APPROVED BY

TITLE

CONDITIONS OF APPROVAL, IF ANY:

NMOCD

*See Instructions On Reverse Side

APPROVED
AS AMENDED

DATE APR 17 1992

AREA MANAGER

Hold C-104 for CR

SEBIO SARA
OIL CON. DIA.
S. L. 1910

Submit to Appropriate
District Office
State Lease - 4 copies
Fee Lease - 3 copies

State of New Mexico
Energy, Minerals and Natural Resources Department

Form C-102
Revised 1-1-89

OIL CONSERVATION DIVISION

P.O. Box 2088
Santa Fe, New Mexico 87504-2088

DISTRICT I
P.O. Box 1980, Hobbs, NM 88240

DISTRICT II
P.O. Drawer DD, Artesia, NM 88210

DISTRICT III
1000 Rio Brazos Rd., Aztec, NM 87410

WELL LOCATION AND ACREAGE DEDICATION PLAT

All Distances must be from the outer boundaries of the section

Operator Dugan Production Corporation			Lease Cisco Com		Well No. 90
Unit Letter L	Section 3	Township 25 North	Range 13 West	County San Juan	
Actual Footage Location of Well: 1450 feet from the South line and 840 feet from the West line					
Ground level Elev. 6381	Producing Formation Fruitland Coal		Pool Basin Fruitland Coal	Dedicated Acreage: 320.55 Acres	

- Outline the acreage dedicated to the subject well by colored pencil or hatchure marks on the plat below.
- If more than one lease is dedicated to the well, outline each and identify the ownership thereof (both as to working interest and royalty).
- If more than one lease of different ownership is dedicated to the well, have the interest of all owners been consolidated by communitization, unitization, force-pooling, etc.?
☒ Yes ☐ No If answer is "yes" type of consolidation Will be communitized
If answer is "no" list the owners and tract descriptions which have actually been consolidated. (Use reverse side of this form if necessary.)
No allowable will be assigned to the well until all interests have been consolidated (by communitization, unitization, forced-pooling, or otherwise) or until a non-standard unit, eliminating such interest, has been approved by the Division.

DUGAN PRODUCTION SF-078156-A	
Section 3	
APR 20 1992 OIL CON. DIV. SCT. 3	
840'	1450'
NM-33027	GIANT EXP. & PROD. CO. REBECCA EBERT BREWER, ET AL AMERITRUST TEXAS

0 330 660 990 1320 1650 1980 2310 2640 2000 1500 1000 500 0

OPERATOR CERTIFICATION

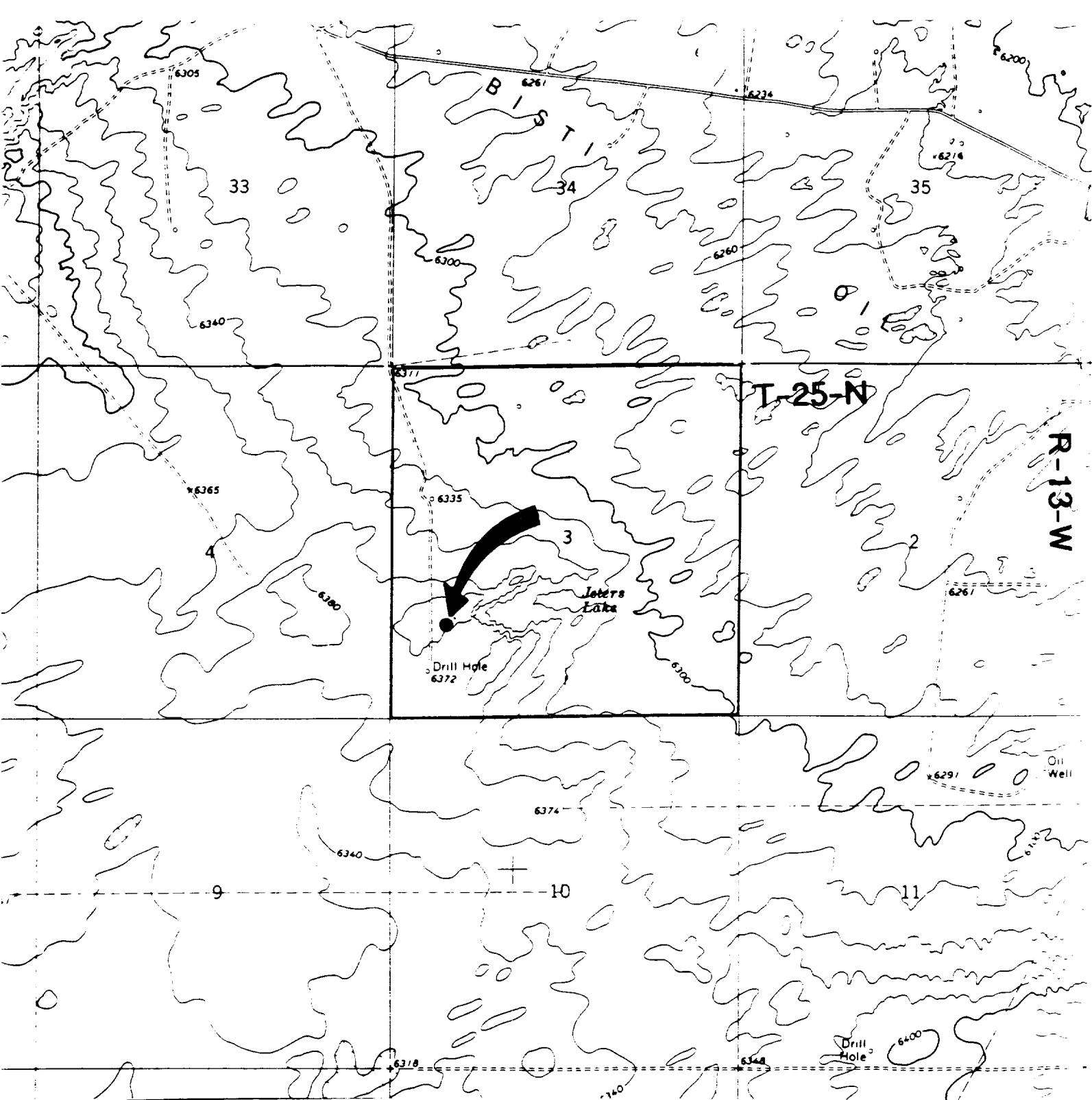
I hereby certify that the information contained herein is true and complete to the best of my knowledge and belief.

Signature <i>Sherman E. Dugan</i>
Printed Name SHERMAN E. DUGAN
Position Vice-President
Company Dugan Production Corp.
Date 9-11-90

SURVEYOR CERTIFICATION

I hereby certify that the well location shown on this plat was plotted from field notes of actual surveys made by me or under my supervision, and that the same is true and correct to the best of my knowledge and belief.

Date Surveyed August 30, 1990
Signature & Seal of Professional Surveyor <i>Carl Risenhoover</i> NEW MEXICO Certified No. 5979 Edgar Risenhoover, P.S.



DUGAN PRODUCTION CORP. - CISCO COM #90

Existing Roads

Exhibit E

Vicinity of nearest town or reference pt.
Approx. 7 miles SW of EPNG Chaco Plant

Type of surface dirt

Conditions good

Other

Reference map: USGS map

Moncisco Wash, N. Mex, 1966

Planned Access Road(s)

Exhibit E

Width _____ Maximum grades _____

Drainage design _____

Cuts & Fills _____

Surfacing material _____

☒ Turnouts

☐ Culverts

☒ Gates

☐ Cattleguards

☐ Fence cuts

☐ Waterbars

NO NEW ACCESS
ROAD REQUIRED

Access road(s) do/do not cross (Fed/Ind land)