

UNITED STATES
DEPARTMENT OF THE INTERIOR
BUREAU OF LAND MANAGEMENT

30-04528808

APPLICATION FOR PERMIT TO DRILL, DEEPEN, OR PLUG BACK

1a. TYPE OF WORK

DRILL ☒

DEEPEN ☐

PLUG BACK ☐

b. TYPE OF WELL

OIL
WELL ☐

GAS
WELL ☒

OTHER

SINGLE
ZONE ☒

MULTIPLE
ZONE ☐

2. NAME OF OPERATOR

Giant Exploration & Production Company 8987

3. ADDRESS OF OPERATOR

P.O. Box 2810, Farmington, NM 87499

4. LOCATION OF WELL (Report location clearly and in accordance with any State requirements.)*

At surface

At proposed prod. zone

1850' FNL and 1850' FEL
Section 31, T25N, R12W, NMPM

14. DISTANCE IN MILES AND DIRECTION FROM NEAREST TOWN OR POST OFFICE*

25.8 miles south of Farmington, New Mexico

15. DISTANCE FROM PROPOSED*

LOCATION TO NEAREST
PROPERTY OR LEASE LINE, FT.
(Also to nearest drlg. unit line, if any) 790'

16. NO. OF ACRES IN LEASE

640.0080499

17. NO. OF ACRES ASSIGNED
TO THIS WELL

320

18. DISTANCE FROM PROPOSED LOCATION*
TO NEAREST WELL, DRILLING, COMPLETED,
OR APPLIED FOR, ON THIS LEASE, FT.

1600'

19. PROPOSED DEPTH

1200'

20. ROTARY OR CABLE TOOLS

Rotary

21. ELEVATIONS (Show whether DF, RT, GR, etc.)

This action is subject to technical and
procedural review pursuant to 43 CFR 3160.4,
and appeal pursuant to 43 CFR 3160.6,
6322' GLE

22. APPROX. DATE WORK WILL START*

As soon as permitted

PROPOSED CASING AND CEMENTING PROGRAM

DRILLING OPERATIONS AUTHORIZED ARE
SUBJECT TO COMPLIANCE WITH ATTACHED
"GENERAL CONDITIONS"

SIZE OF HOLE	SIZE OF CASING	WEIGHT PER FOOT	SETTING DEPTH
8-3/4"	7"	20#	110' / 120'
6-1/4"	4-1/2"	9.5#	1200'

QUANTITY OF CEMENT
60 sks (1.18 ft³/sk)

cmt to surface

125 sks cmt to surface
(75 sks - 2.06 ft³/sk)
(50 sks - 1.18 ft³/sk)

It is proposed to drill the subject Basin Fruitland Coal Well. It will be evaluated on the basis of open hole logs. Please see attached Onshore Oil and Gas Order No. 1 data.

RECEIVED

NOV 2 1992

OIL CON. DIV.
DIST. 3

"Approval of this application does not warrant that the operator holds legal or equitable title or title to this lease."

RECEIVED
BLM

NOV 21 PM 2:58

IN ABOVE SPACE DESCRIBE PROPOSED PROGRAM: If proposal is to deepen or plug back, give data on present productive zone and proposed new productive zone. If proposal is to drill or deepen directionally, give pertinent data on subsurface locations and measured and true vertical depths. Give blowout preventer program, if any.

24.

SIGNED

John C. Corbett

TITLE

Vice President

DATE

5/11/92

(This space for Federal or State office use)

PERMIT NO.

APPROVAL DATE

APPROVED BY

TITLE

CONDITIONS OF APPROVAL, IF ANY:

APPROVED
AS AMENDED

DATE

OCT 30 1992

NMOOD

*See Instructions On Reverse Side

AREA MANAGER

Submit to Appropriate
District Office
State Lease - 4 copies
Fee Lease - 3 copies

State of New Mexico
Energy, Minerals and Natural Resources Department

Form C-102
Revised 1-1-89

OIL CONSERVATION DIVISION

P.O. Box 2088
Santa Fe, New Mexico 87504-2088

DISTRICT I
P.O. Box 1980, Hobbs, NM 88240

DISTRICT II
P.O. Drawer DD, Artesia, NM 88210

DISTRICT III
1000 Rio Brazos Rd., Aztec, NM 87410

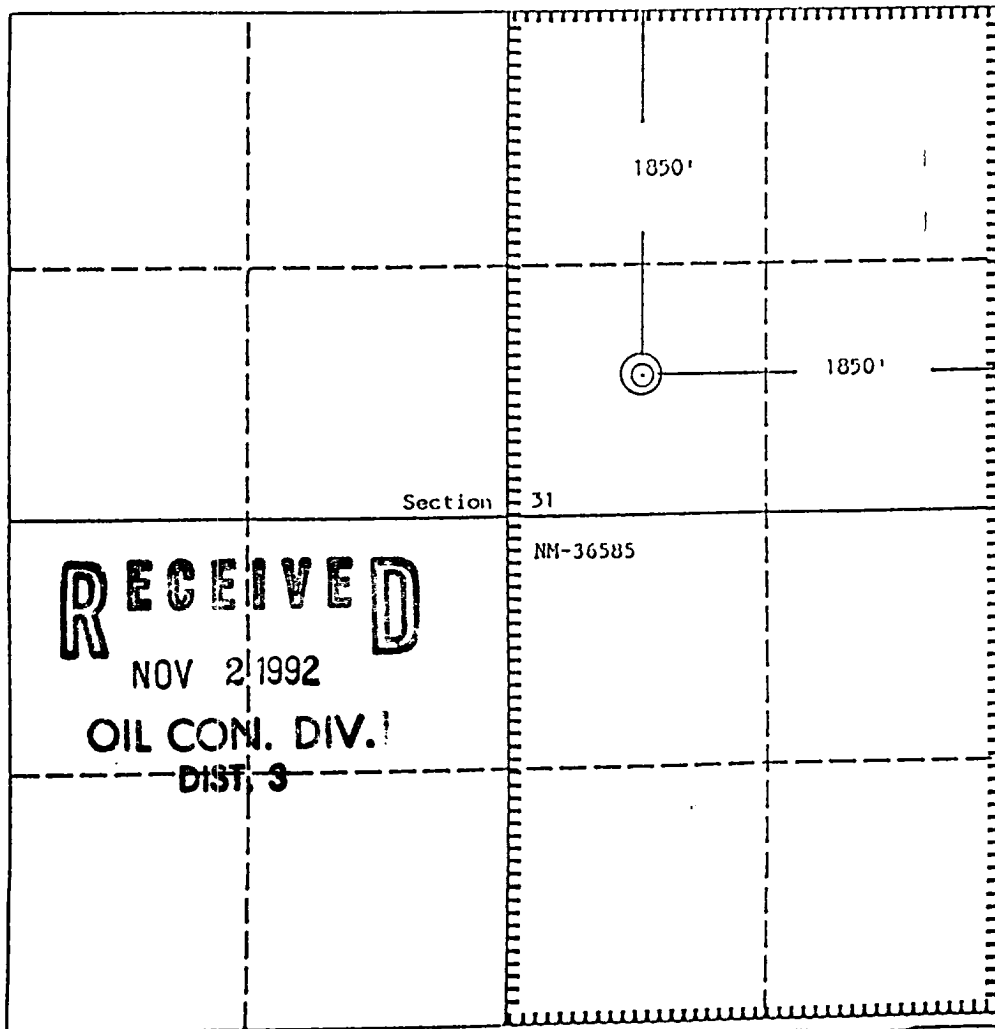
WELL LOCATION AND ACREAGE DEDICATION PLAT

All Distances must be from the outer boundaries of the section

Operator Giant Exploration & Production Company			Lease Bisti Coal 31		Well No. 1
Unit Letter G	Section 31	Township 25 North	Range 12 West	County San Juan	

Actual Footage Location of Well:					
1850 feet from the North line and		1850 feet from the East line			
Ground level Elev. 6322	Producing Formation Fruitland		Pool Basin Fruitland Coal		Dedicated Acreage: 320 Acres

- Outline the acreage dedicated to the subject well by colored pencil or hatchure marks on the plat below.
- If more than one lease is dedicated to the well, outline each and identify the ownership thereof (both as to working interest and royalty).
- If more than one lease of different ownership is dedicated to the well, have the interest of all owners been consolidated by communitization, unitization, force-pooling, etc.?
☐ Yes ☐ No If answer is "yes" type of consolidation _____
If answer is "no" list the owners and tract descriptions which have actually been consolidated. (Use reverse side of this form if necessary.) _____
No allowable will be assigned to the well until all interests have been consolidated (by communitization, unitization, forced-pooling, or otherwise) or until a non-standard unit, eliminating such interest, has been approved by the Division.



OPERATOR CERTIFICATION

I hereby certify that the information contained herein is true and complete to the best of my knowledge and belief.

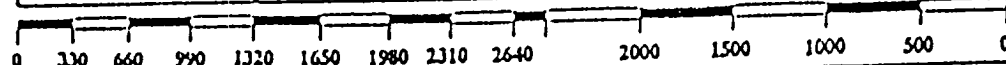
Signature
John C. Corbett
Printed Name
John C. Corbett
Position
Vice President
Company
Giant Exploration & Production Co.
Date
May 20, 1992

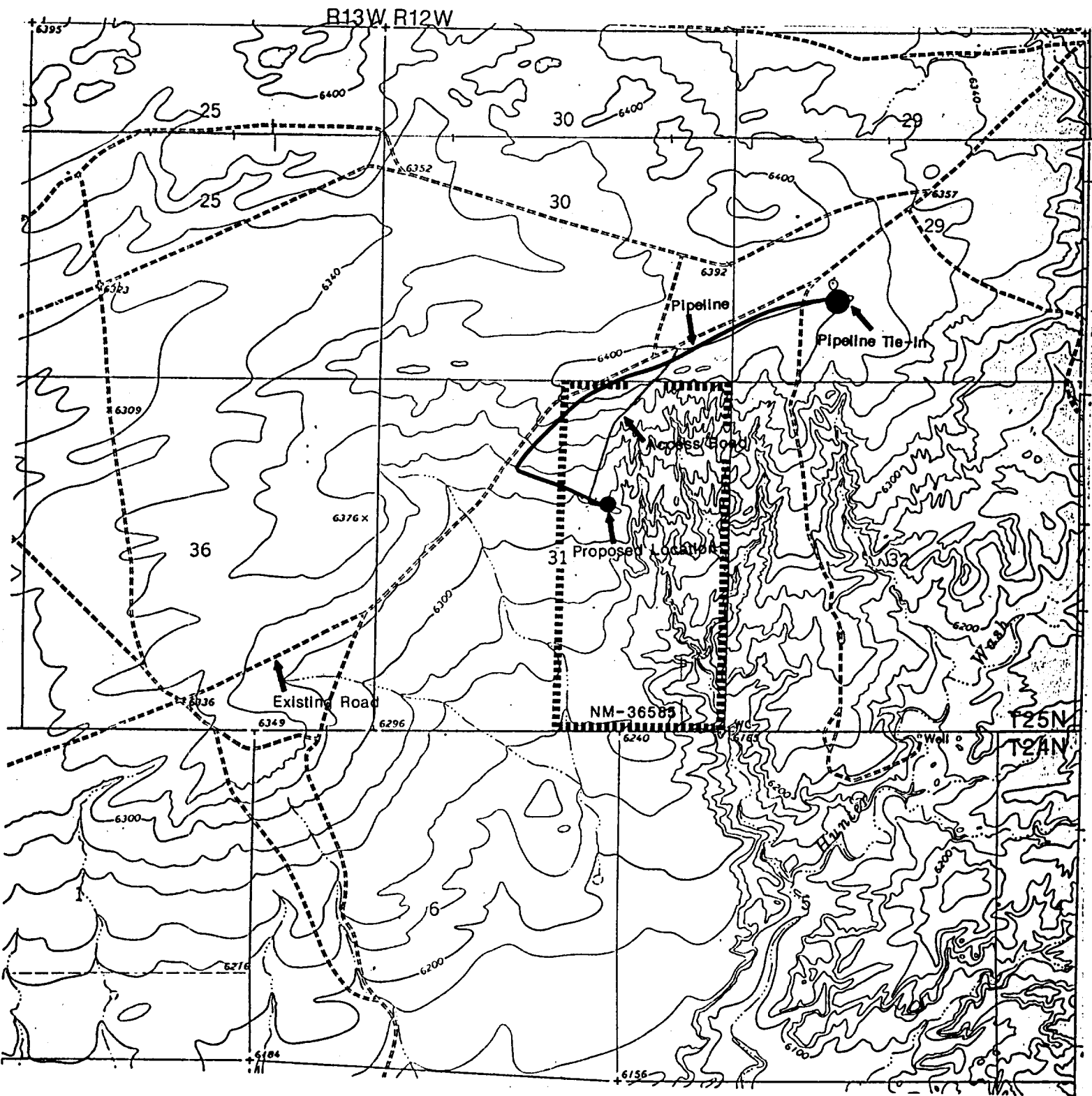
SURVEYOR CERTIFICATION

I hereby certify that the well location shown on this plat was plotted from field notes of actual surveys made by me or under my supervision, and that the same is true and correct to the best of my knowledge and belief.

Date Surveyed
August 6, 1990

Signature & Seal of
Professional Surveyor
Edgar L. Risenhoover
Certificate No. 5979
Edgar L. Risenhoover





GIANT EXPLORATION & PRODUCTION COMPANY

Bisti Coal 31 No. 1
 1850' FNL 1850' FEL
 Section 31, T25N, R12W
 San Juan County, New Mexico