

UNITED STATES  
DEPARTMENT OF THE INTERIOR  
BUREAU OF LAND MANAGEMENT

30-045-28897

APPLICATION FOR PERMIT TO DRILL, DEEPEN, OR PLUG BACK

1a. TYPE OF WORK

DRILL ☒

DEEPEN ☐

PLUG BACK ☐

b. TYPE OF WELL

OIL  
WELL ☐

GAS  
WELL ☒

OTHER

SINGLE  
ZONE ☒

MULTIPLE  
ZONE ☐

2. NAME OF OPERATOR

Giant Exploration & Production Company

3. ADDRESS OF OPERATOR

P.O. Box 2810, Farmington, NM 87499

4. LOCATION OF WELL (Report location clearly and in accordance with any State requirements.)\*

At surface

1850' FSL and 2310' FWL

At proposed prod. zone Section 11, T25N, R13W

San Juan County, NM

14. DISTANCE IN MILES AND DIRECTION FROM NEAREST TOWN OR POST OFFICE\*

25 Miles South of Farmington, NM

15. DISTANCE FROM PROPOSED\*

LOCATION TO NEAREST  
PROPERTY OR LEASE LINE, FT.  
(Also to nearest drlg. unit line, if any)

790'

18. DISTANCE FROM PROPOSED LOCATION\*

TO NEAREST WELL, DRILLING, COMPLETED,  
OR APPLIED FOR, ON THIS LEASE, FT.

2350'

16. NO. OF ACRES IN LEASE

960  
240.00

19. PROPOSED DEPTH

1400'

17. NO. OF ACRES ASSIGNED  
TO THIS WELL

5/320

20. ROTARY OR CABLE TOOLS

Rotary

21. ELEVATIONS (Show whether DF, RT, GR, etc.)

6340' GLE This action is subject to technical and  
procedural review pursuant to 43 CFR 3155.3  
and proposed to 43 CFR 3155.4.

22. APPROX. DATE WORK WILL START\*

As soon as permitted

23. PROPOSED PROGRAM

SIZE OF HOLE	SIZE OF CARING	WEIGHT PER FOOT	SETTING DEPTH	QUANTITY OF CEMENT
8-3/4"	7"	20#	110' 120'	60 sks (1.18 ft <sup>3</sup> /sk) cmt to surface
6-1/4"	4-1/2"	9.5#	1400'	155 sks cmt to surface (75 sks - 2.06 ft <sup>3</sup> /sk) (80 sks - 1.18 ft <sup>3</sup> /sk)

It is proposed to drill the subject Basin Fruitland Coal Well. It will be evaluated on the basis of open hole logs. Please see attached Onshore Oil and Gas Order No.1 data.

RECEIVED

DEC 23 1992

OIL CON. DIV.  
DIST. 3

RECEIVED  
BLM  
DEC 23 1992  
AM 10:14  
FARMINGTON, N.M.

IN ABOVE SPACE DESCRIBE PROPOSED PROGRAM: If proposal is to deepen or plug back, give data on present productive zone and proposed new productive zone. If proposal is to drill or deepen directionally, give pertinent data on subsurface locations and measured and true vertical depths. Give blowout preventer program, if any.

24.

SIGNED

John C. Corbett

TITLE Vice President

DATE August 3, 1992

(This space for Federal or State office use)

PERMIT NO.

APPROVAL DATE

APPROVED  
AS AMENDED

APPROVED BY

TITLE

CONDITIONS OF APPROVAL, IF ANY:

DEC 21 1992

NMOOD

AREA MANAGER

\*See Instructions On Reverse Side

# OIL CONSERVATION DIVISION

P.O. Box 2088

Santa Fe, New Mexico 87504-2088

## DISTRICT I

P.O. Box 1980, Hobbs, NM 88240

## DISTRICT II

P.O. Drawer DD, Artesia, NM 88210

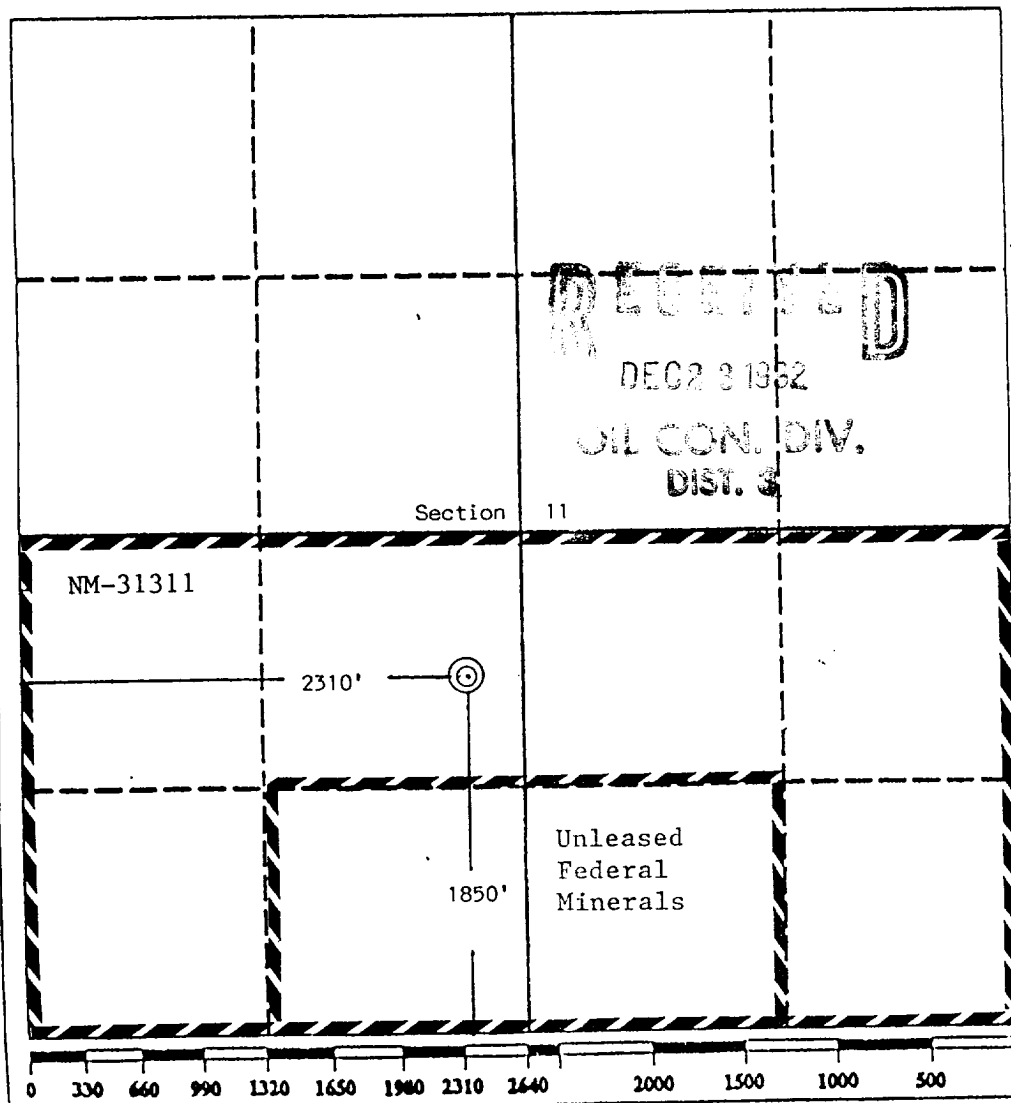
## DISTRICT III

1000 Rio Brazos Rd., Aztec, NM 87410

## WELL LOCATION AND ACREAGE DEDICATION PLAT

All Distances must be from the outer boundaries of the section

Operator Giant Exploration & Production Company			Lease West Bisti Coal 11		Well No. 2
Unit Letter K	Section 11	Township 25 North	Range 13 West	County San Juan	
Actual Footage Location of Well: 1850 feet from the South line and 2310 feet from the West line					
Ground level Elev. 6340 Estm	Producing Formation Fruitland	Pool Basin Fruitland Coal		Dedicated Acreage: 92 320 Acres	
<p>1. Outline the acreage dedicated to the subject well by colored pencil or hatchure marks on the plat below.</p> <p>2. If more than one lease is dedicated to the well, outline each and identify the ownership thereof (both as to working interest and royalty).</p> <p>3. If more than one lease of different ownership is dedicated to the well, have the interest of all owners been consolidated by communitization, unitization, force-pooling, etc.? <input checked="" type="checkbox"/> Yes <input type="checkbox"/> No If answer is "yes" type of consolidation <u>Communitization Agreement (Pending)</u></p> <p>If answer is "no" list the owners and tract descriptions which have actually been consolidated. (Use reverse side of this form if necessary.)</p> <p>No allowable will be assigned to the well until all interests have been consolidated (by communitization, unitization, forced-pooling, or otherwise) or until a non-standard unit, eliminating such interest, has been approved by the Division.</p>					



### OPERATOR CERTIFICATION

I hereby certify that the information contained herein is true and complete to the best of my knowledge and belief.

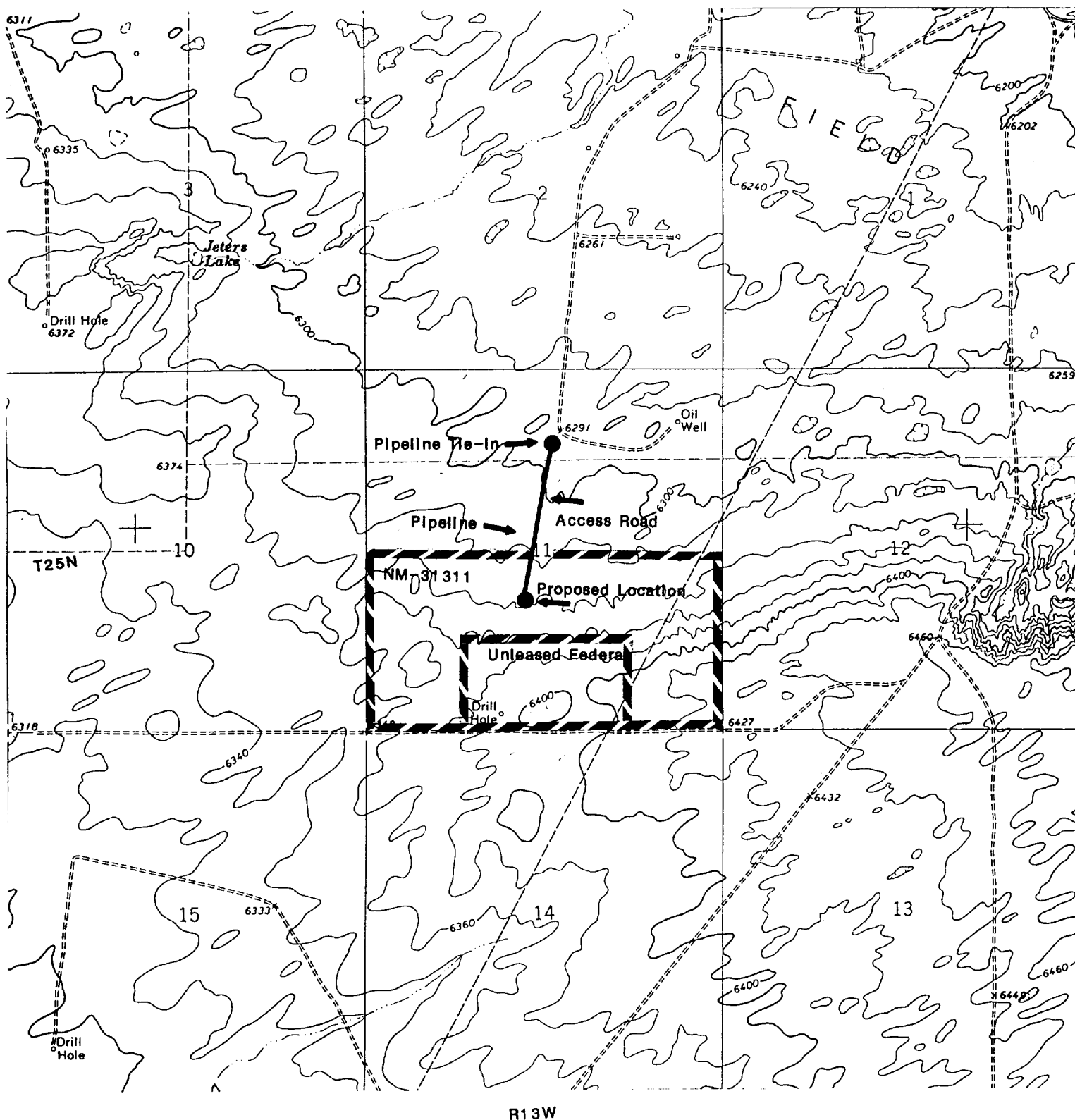
Signature  
*John C. Corbett*  
Printed Name  
John C. Corbett  
Position  
Vice President  
Company  
Giant Exploration & Prod  
Date  
August 3, 1992

### SURVEYOR CERTIFICATION

I hereby certify that the well location shown on this plat was plotted from field notes or actual surveys made by me or under my supervision, and that the same is true and correct to the best of my knowledge and belief.

Date Surveyed  
July 28, 1992

Signature & Seal of Professional Surveyor  
*Edgar L. Risenhoover*  
Edgar L. Risenhoover, R.S.  
Certificate No. 5972



GIANT EXPLORATION & PRODUCTION COMPANY

West Bisti Coal 11 No. 2  
 1850' FSL and 2310' FWL  
 Section 11, T25N, R13W  
 San Juan County, New Mexico