

UNITED STATES
DEPARTMENT OF THE INTERIOR
BUREAU OF LAND MANAGEMENT

30-045-28915
RECEIVED
1200 PM 1:57
1993 FARMINGTON, NM

Form approved.
Budget Bureau No. 1004-0136
Expires August 31, 1985

APPLICATION FOR PERMIT TO DRILL, DEEPEN, OR PLUG BACK

1a. TYPE OF WORK

DRILL ☒

DEEPEN ☐

PLUG BACK ☐

b. TYPE OF WELL

OIL
WELL ☐

GAS
WELL ☒

OTHER

SINGLE
ZONE ☒

MULTIPLE
ZONE ☐

2. NAME OF OPERATOR

8287

Giant Exploration & Production Company

3. ADDRESS OF OPERATOR

P.O. Box 2810, Farmington, NM 87499

4. LOCATION OF WELL (Report location clearly and in accordance with any State requirements.)*

At surface

790' FSL and 2506' FWL

At proposed prod. zone

Section 14, T25N, R13W, NMPM
San Juan County, New Mexico

14. DISTANCE IN MILES AND DIRECTION FROM NEAREST TOWN OR POST OFFICE*

24 miles south of Farmington, NM

15. DISTANCE FROM PROPOSED*

LOCATION TO NEAREST

PROPERTY OR LEASE LINE, FT.

(Also to nearest drlg. unit line, if any)

790'

16. NO. OF ACRES IN LEASE

560

17. NO. OF ACRES ASSIGNED

TO THIS WELL

5/320

18. DISTANCE FROM PROPOSED LOCATION*

TO NEAREST WELL, DRILLING, COMPLETED,

OR APPLIED FOR, ON THIS LEASE, FT.

4200'

19. PROPOSED DEPTH

1400'

20. ROTARY OR CABLE TOOLS

Rotary

21. ELEVATIONS (Show whether DF, RT, GR, etc.)

6377' Est.

This action is subject to technical and
procedural review pursuant to 43 CFR 3125.3
and appeal pursuant to 43 CFR 3125.4
PROPOSED CASING AND CEMENTING PROGRAM

22. APPROX. DATE WORK WILL START*

As soon as permitted

23.

DRILLING OPERATIONS AUTHORIZED ARE

SUBJECT TO COMPLIANCE WITH ATTACHED

GENERAL REQUIREMENTS

SIZE OF HOLE	SIZE OF CASING	WEIGHT PER FOOT	SETTING DEPTH	QUANTITY OF CEMENT
8-3/4"	7"	20#	110' / 120'	60 sks (1.18 ft ³ /sk)
				cmt to surface
6-1/4"	4-1/2"	9.5#	1400'	155 sks cmt to surface
				(75 sks - 2.06 ft ³ /sk)
				(80 sks - 1.18 ft ³ /sk)

It is proposed to drill the subject Basin Fruitland Coal Well. It will be evaluated on the basis of open hole logs. Please see attached Onshore Oil and Gas Order No.1 data.

RECEIVED
JAN - 4 1993
OIL CON. DIV
DIST. 3

IN ABOVE SPACE DESCRIBE PROPOSED PROGRAM: If proposal is to deepen or plug back, give data on present productive zone and proposed new productive zone. If proposal is to drill or deepen directionally, give pertinent data on subsurface locations and measured and true vertical depths. Give blowout preventer program, if any.

24.

SIGNED

John C. Corbett

TITLE Vice President

DATE Oct. 2, 1992

(This space for Federal or State office use)

PERMIT NO.

APPROVAL DATE

APPROVED
AS AMENDED

APPROVED BY

TITLE

CONDITIONS OF APPROVAL, IF ANY:

DATE
DEC 29 1992

NMOCD

*See Instructions On Reverse Side

William F. Blackwell
AREA MANAGER

Submit to Appropriate
District Office
State Lease - 4 copies
Fee Lease - 3 copies

State of New Mexico
Energy, Minerals and Natural Resources Department

Form C-102
Revised 1-1-89

OIL CONSERVATION DIVISION

P.O. Box 2088
Santa Fe, New Mexico 87504-2088

RECEIVED
BLM

92 OCT -5 PM 1:57

DISTRICT I
P.O. Box 1980, Hobbs, NM 88240

DISTRICT II
P.O. Drawer DD, Artesia, NM 88210

DISTRICT III
1000 Rio Brazos Rd., Aztec, NM 87410

WELL LOCATION AND ACREAGE DEDICATION PLAT
All Distances must be from the outer boundaries of the section

Operator Giant Exploration & Production Company			Lease West Bisti Coal 14		Well No. 2
Unit Letter N	Section 14	Township 25 North	Range 13 West	County San Juan	
Actual Footage Location of Well: 790 feet from the South line and 2506 feet from the West line					
Ground level Elev. 6377 Est.	Producing Formation Fruitland		Pool Basin Fruitland Coal		Dedicated Acreage: 320 Acres

- Outline the acreage dedicated to the subject well by colored pencil or hatchure marks on the plat below.
- If more than one lease is dedicated to the well, outline each and identify the ownership thereof (both as to working interest and royalty).
- If more than one lease of different ownership is dedicated to the well, have the interest of all owners been consolidated by communitization, unitization, force-pooling, etc.?
☐ Yes ☐ No If answer is "yes" type of consolidation _____
If answer is "no" list the owners and tract descriptions which have actually been consolidated. (Use reverse side of this form if necessary).
No allowable will be assigned to the well until all interests have been consolidated (by communitization, unitization, forced-pooling, or otherwise) or until a non-standard unit, eliminating such interest, has been approved by the Division.

OPERATOR CERTIFICATION

I hereby certify that the information contained herein is true and complete to the best of my knowledge and belief.

Signature
John C. Corbett

Printed Name
John C. Corbett

Position
Vice President

Company
Giant Exploration & Prod. Co.

Date
October 2, 1992

SURVEYOR CERTIFICATION

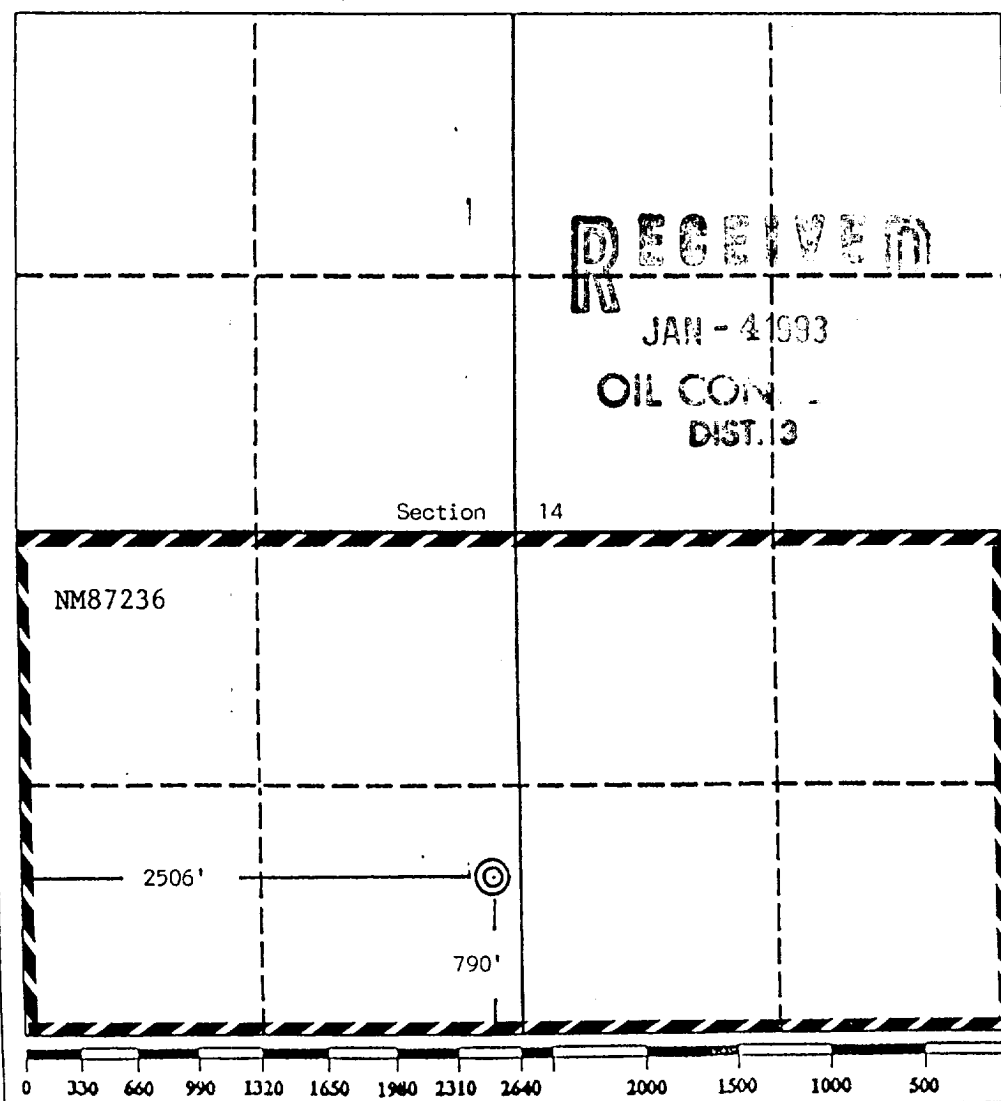
I hereby certify that the well location shown on this plat was plotted from field notes of actual surveys made by me or under my supervision, and that the same is true and correct to the best of my knowledge and belief.

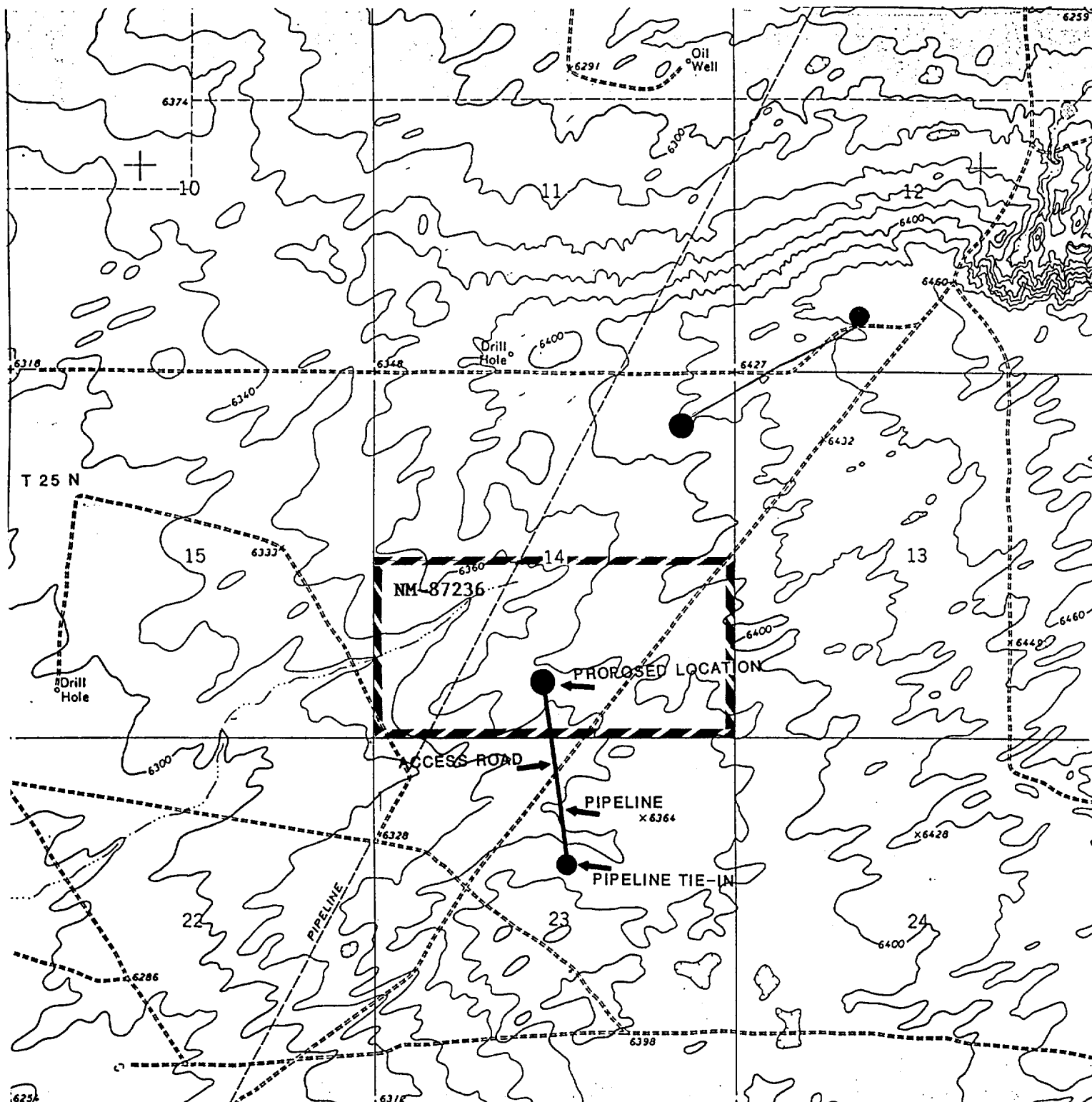
Date Surveyed
October 2, 1992

Signature
Edgar L. Riverboat

Professional Seal
EDGAR L. RIVERBOAT
REGISTERED LAND SURVEYOR
NEW MEXICO
5979

Certified to
Edgar L. Riverboat, P.S.





R 13 W

GIANT EXPLORATION & PRODUCTION COMPANY

West Bisti Coal 14 Well No. 2
 790' FSL and 2506' FWL
 Section 14, T25N, R13W
 San Juan County, New Mexico