

UNITED STATES
DEPARTMENT OF THE INTERIOR
BUREAU OF LAND MANAGEMENT

APPLICATION FOR PERMIT TO DRILL, DEEPEN, OR PLUG BACK

1a. TYPE OF WORK
DRILL ☒ DEEPEN ☐ PLUG BACK ☐

b. TYPE OF WELL
OIL WELL ☐ GAS WELL ☒ OTHER ☐ SINGLE ZONE ☒ MULTIPLE ZONE ☐

2. NAME OF OPERATOR
Giant Exploration & Production Company 8987

3. ADDRESS OF OPERATOR
P.O. Box 2810, Farmington, NM 87499

4. LOCATION OF WELL (Report location clearly and in accordance with any State requirements.)
At surface 1250' FNL and 1850' FEL
At proposed prod. zone Section 22, T25N, R13W, NMPM
San Juan County, New Mexico

14. DISTANCE IN MILES AND DIRECTION FROM NEAREST TOWN OR POST OFFICE*
25 miles south of Farmington, NM

15. DISTANCE FROM PROPOSED* LOCATION TO NEAREST PROPERTY OR LEASE LINE, FT. (Also to nearest drilg. unit line, if any) 70'

16. NO. OF ACRES IN LEASE 600
160

17. NO. OF ACRES ASSIGNED TO THIS WELL E 320

18. DISTANCE FROM PROPOSED LOCATION* TO NEAREST WELL, DRILLING, COMPLETED, OR APPLIED FOR, ON THIS LEASE, FT. 1300'

19. PROPOSED DEPTH 1300'

20. ROTARY OR CABLE TOOLS Rotary

21. ELEVATIONS (Show whether DF, RT, GR, etc.) 6305' Est. GLE

22. APPROX. DATE WORK WILL START* As soon as permitted

23. PROPOSED CASING AND CEMENTING PROGRAM

SIZE OF HOLE	SIZE OF CASING	WEIGHT PER FOOT	SETTING DEPTH
8-3/4"	7"	20#	110' 120'
6-1/4"	4-1/2"	9.5#	1300'

GENERAL QUANTITY OF CEMENT
60 sks (1.18 ft³/sk)
cmt to surface
140 sks cmt to surface
(75 sks - 2.06 ft³/sk)
(65 sks - 1.18 ft³/sk)

It is proposed to drill the subject Basin Fruitland Coal Well. It will be evaluated on the basis of open hole logs. Please see attached Onshore Oil and Gas Order No. 1 data.

RECEIVED
JAN - 4 1993
OIL CON. DIV.
DIST. 3

IN ABOVE SPACE DESCRIBE PROPOSED PROGRAM: If proposal is to deepen or plug back, give data on present productive zone and proposed new productive zone. If proposal is to drill or deepen directionally, give pertinent data on subsurface locations and measured and true vertical depths. Give blowout preventer program, if any.

24. SIGNED John C. Corbett TITLE Vice President DATE November 3, 1992
(This space for Federal or State office use)

PERMIT NO. _____ APPROVAL DATE DEC 29 1992

APPROVED BY William B. Black TITLE AREA MANAGER
CONDITIONS OF APPROVAL, IF ANY: NMOCD

*See Instructions On Reverse Side

Submit to Appropriate
District Office
State Lease - 4 copies
For Lease - 3 copies

State of New Mexico
Energy, Minerals and Natural Resources Department

Form C-102
Revised 1-1-89

OIL CONSERVATION DIVISION

P.O. Box 2088

Santa Fe, New Mexico 87504-2088

DISTRICT I

P.O. Box 1980, Hobbs, NM 88240

DISTRICT II

P.O. Drawer DD, Artesia, NM 88210

DISTRICT III

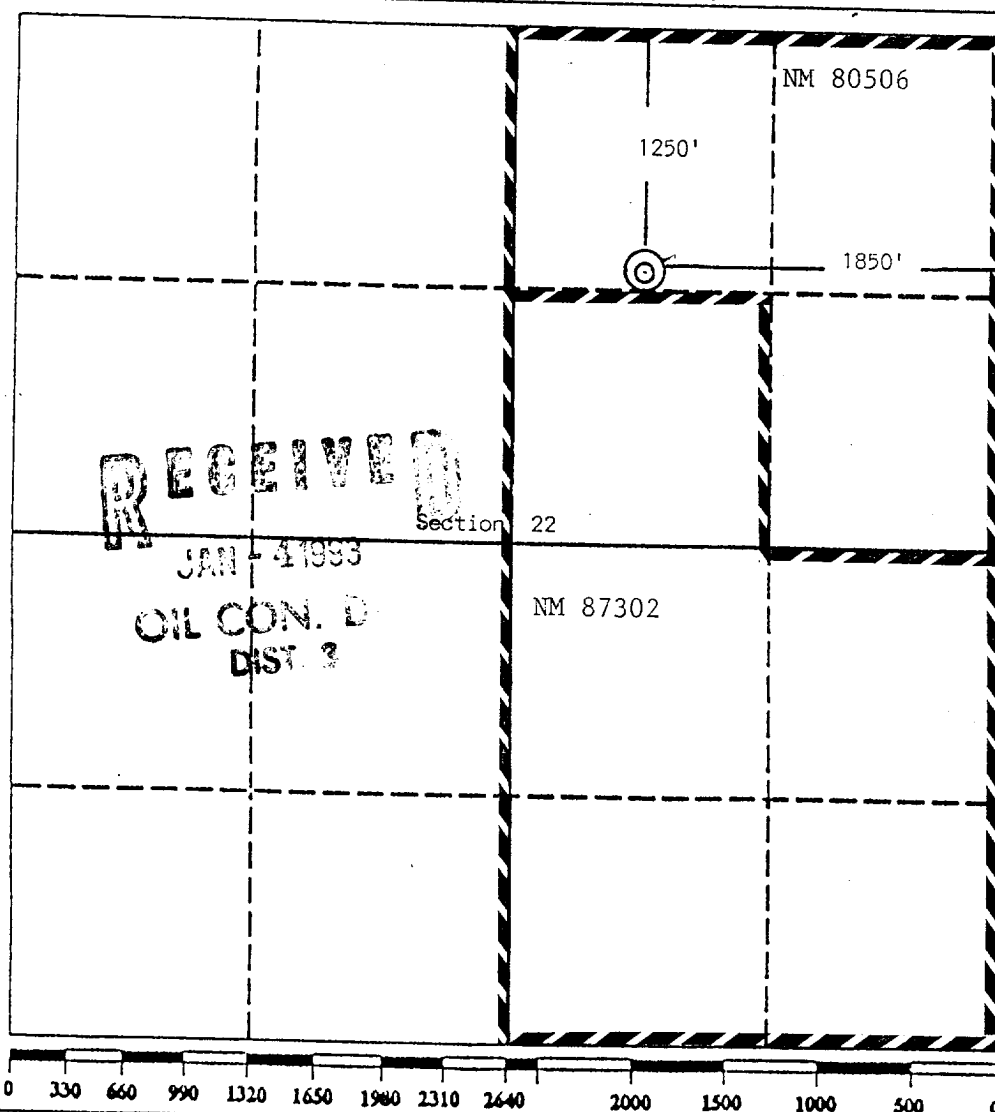
1000 Rio Brazos Rd., Aztec, NM 87410

WELL LOCATION AND ACREAGE DEDICATION PLAT

All Distances must be from the outer boundaries of the section

Operator Giant Exploration & Production Company			Lease West Bisti Coal 22 Com		Well No. 1
Unit Letter B	Section 22	Township 25 North	Range 13 West	County NMPM	San Juan
Actual Footage Location of Well: 1250 feet from the North line and 1850 feet from the East line					
Ground level Elev. 6305 Est.	Producing Formation Fruitland		Pool Basin Fruitland Coal	Dedicated Acreage: 320 Acres	

1. Outline the acreage dedicated to the subject well by colored pencil or hatchure marks on the plat below.
2. If more than one lease is dedicated to the well, outline each and identify the ownership thereof (both as to working interest and royalty).
3. If more than one lease of different ownership is dedicated to the well, have the interest of all owners been consolidated by communitization, unitization, force-pooling, etc.?
☒ Yes ☐ No If answer is "yes" type of consolidation Communitization Agreement (Pending)
If answer is "no" list the owners and tract descriptions which have actually been consolidated. (Use reverse side of this form if necessary.)
No allowable will be assigned to the well until all interests have been consolidated (by communitization, unitization, forced-pooling, or otherwise) or until a non-standard unit, eliminating such interest, has been approved by the Division.



OPERATOR CERTIFICATION

I hereby certify that the information contained herein is true and complete to the best of my knowledge and belief.

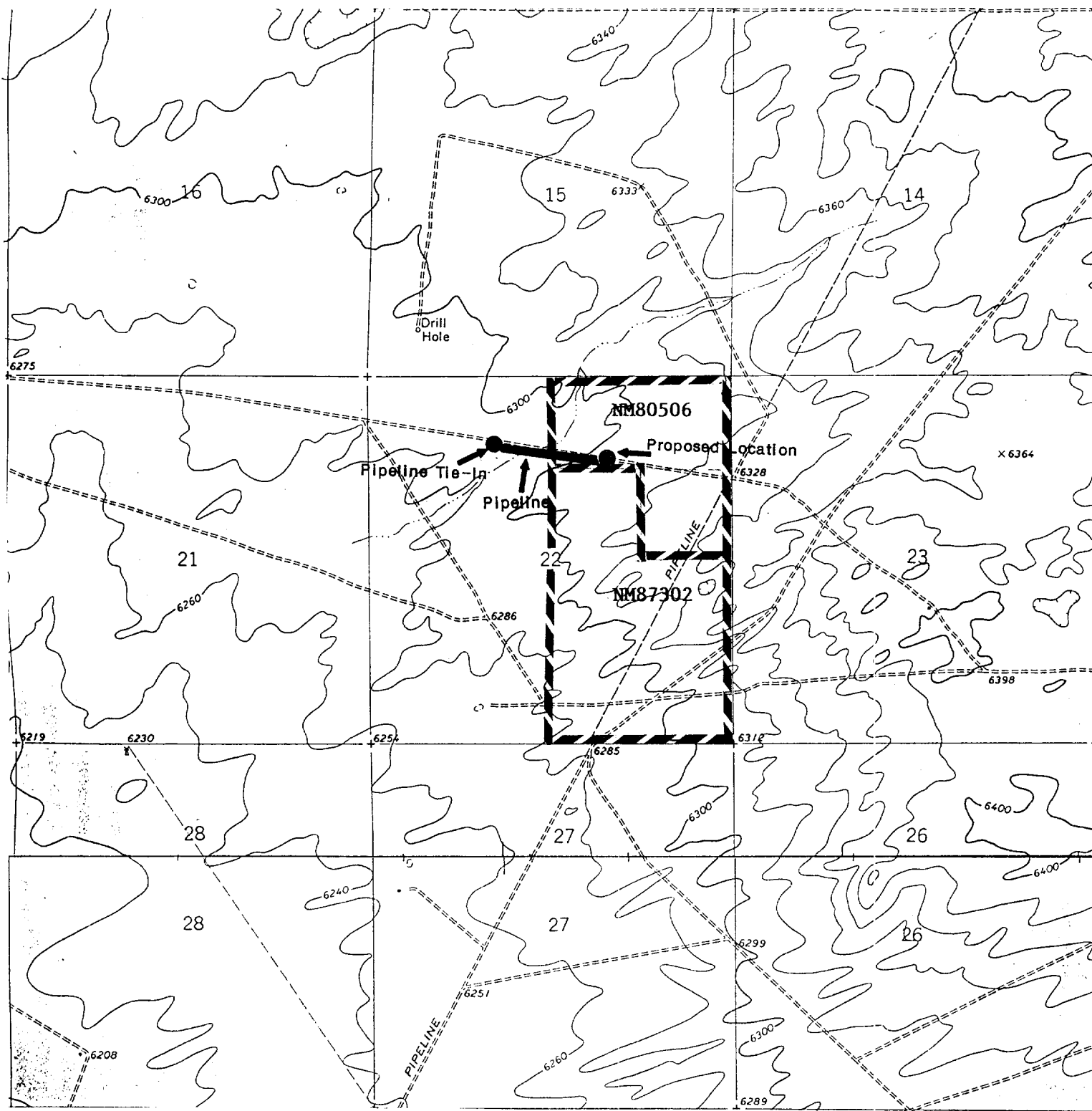
Signature
John C. Corbett
Printed Name
John C. Corbett
Position
Vice President
Company
Giant Exploration & Prod. Co.
Date
November 3, 1992

SURVEYOR CERTIFICATION

I hereby certify that the well location shown on this plat was plotted from field notes of actual surveys made by me or under my supervision, and that the same is true and correct to the best of my knowledge and belief.

Date Surveyed
October 23, 1992

Signature & Seal of
Professional Surveyor
Edgar L. Risenhoover
Edgar L. Risenhoover
5979
REGISTERED LAND SURVEYOR
NEW MEXICO



GIANT EXPLORATION & PRODUCTION COMPANY

WEST BISTI COAL 22 COM WELL NO. 1
 1250' FNL AND 1850' FEL
 SECTION 22, T25N, R13W
 SAN JUAN COUNTY, NEW MEXICO