

UNITED STATES  
DEPARTMENT OF THE INTERIOR  
BUREAU OF LAND MANAGEMENT

RECEIVED  
BLM

94 AUG 24 PM 2:47

APPLICATION FOR PERMIT TO DRILL, DEEPEN, OR PLUG BACK

070 FARMINGTON, NM

1a. Type of Work

DRILL

1b. Type of Well  
GAS

~~CONFIDENTIAL~~

5. Lease Number

SF-078124

6. If Indian, All. or Tribe

2. Operator

**MERIDIAN OIL**

14538

7. Unit Agreement Name

Huerfano Unit

3. Address & Phone No. of Operator

PO Box 4289, Farmington, NM 87499

(505) 326-9700

8. Farm or Lease Name

7139 Huerfano Unit

9. Well Number

288

4. Location of Well

1450' FNL, 1720' FEL

Latitude 36° 25' 06", Longitude 107° 52' 51"

10. Field, Pool, Wildcat

71599 Basin Dakota

11. Sec., Twn, Rge, Mer.

G Sec 10, T-25-N, R-10-W  
NMPM

14. Distance in Miles from Nearest Town

2 miles to Huerfano Trading Post

12. County

San Juan

13. State

NM

15. Distance from Proposed Location to Nearest Property or Lease Line

1450'

API #: 30-045-29168

16. Acres in Lease

17. Acres Assigned to Well

320 E/2

18. Distance from Proposed Location to Nearest Well, Drig, Compl, or Applied for on this Lease

5000'

19. Proposed Depth

6520'

20. Rotary or Cable Tools

Rotary

21. Elevations (DF, FT, GR, Etc.)

6688' GR

22. Approx. Date Work will Start

3rd quarter 1994

23. Proposed Casing and Cementing Program

See Operations Plan attached

This action is subject to technical and  
procedural review pursuant to 43 CFR 3165.3  
and appeal pursuant to 43 CFR 3166.4

DRILLING OPERATIONS AUTHORIZED ARE  
SUBJECT TO COMPLIANCE WITH ATTACHED  
"GENERAL REQUIREMENTS"

24. Authorized by:

*[Signature]*  
Regional Drilling Engineer

Date

8/24/94

PERMIT NO.

APPROVAL DATE

APPROVED BY

TITLE

DATE

**OIL CON. DIV.**  
**DIST. 3**

Archaeological Report submitted by Arboles Contract Archaeology Tech. Report #525 dated 05-23-94

Threatened and Endangered Species Report to be submitted

NOTE: This format is issued in lieu of U.S. BLM Form 3160-

**APPROVED**  
**AS AMENDED**

AUG 31 1994

*[Signature]*  
DISTRICT MANAGER

NMOC

District I  
PO Box 1980, Hobbs, NM 88241-1980  
District II  
PO Drawer DD, Artesia, NM 88211-0719  
District III  
1000 Rio Brazos Rd., Aztec, NM 87410  
District IV  
PO Box 2088, Santa Fe, NM 87504-2088

State of New Mexico  
Energy, Minerals & Natural Resources Department

OIL CONSERVATION DIVISION

PO Box 2088  
Santa Fe, NM 87504-2088

54 AUG 24 PM 2:47

070 FARMINGTON, NM

Form C-102

Revised February 21, 1994

Instructions on back

Submit to Appropriate District Office

State Lease - 4 Copies

Fee Lease - 3 Copies

☐ AMENDED REPORT

WELL LOCATION AND ACREAGE DEDICATION PLAT

<sup>1</sup> API Number 30-045-29168	<sup>1</sup> Pool Code 71599	<sup>1</sup> Pool Name Basin Dakota
<sup>1</sup> Property Code 7142	<sup>1</sup> Property Name Huerfano Unit	<sup>1</sup> Well Number 288
<sup>1</sup> OGRID No. 14538	<sup>1</sup> Operator Name MERIDIAN OIL INC.	<sup>1</sup> Elevation 6688'

<sup>10</sup> Surface Location

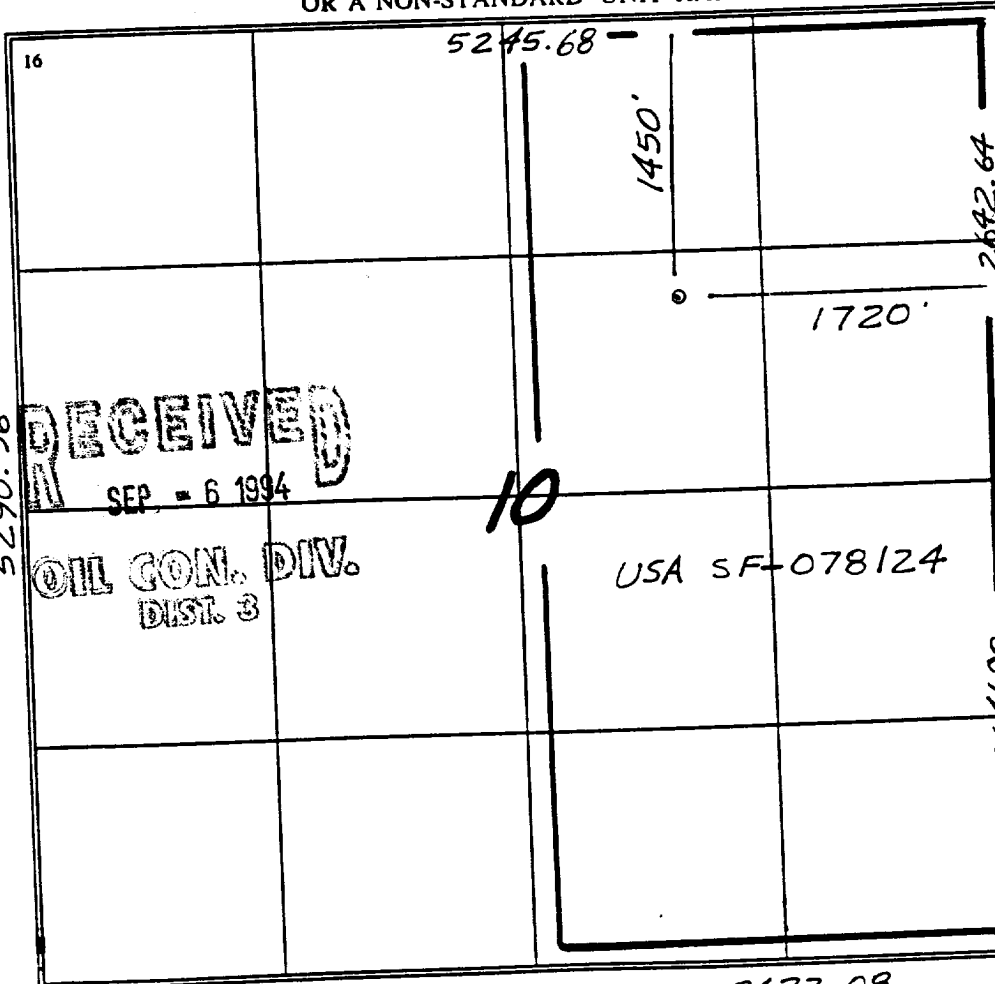
UL or lot no.	Section	Township	Range	Lot Idn	Feet from the	North/South line	Feet from the	East/West line	County
G	10	25 N	10 W		1450	North	1720	East	S.J.

<sup>11</sup> Bottom Hole Location If Different From Surface

UL or lot no.	Section	Township	Range	Lot Idn	Feet from the	North/South line	Feet from the	East/West line	County

<sup>12</sup> Dedicated Acres 320	<sup>13</sup> Joint or Infill	<sup>14</sup> Consolidation Code	<sup>15</sup> Order No.
--------------------------------------	-------------------------------	----------------------------------	-------------------------

NO ALLOWABLE WILL BE ASSIGNED TO THIS COMPLETION UNTIL ALL INTERESTS HAVE BEEN CONSOLIDATED  
OR A NON-STANDARD UNIT HAS BEEN APPROVED BY THE DIVISION



<sup>17</sup> OPERATOR CERTIFICATION

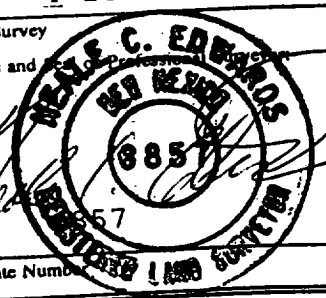
I hereby certify that the information contained herein is true and complete to the best of my knowledge and belief

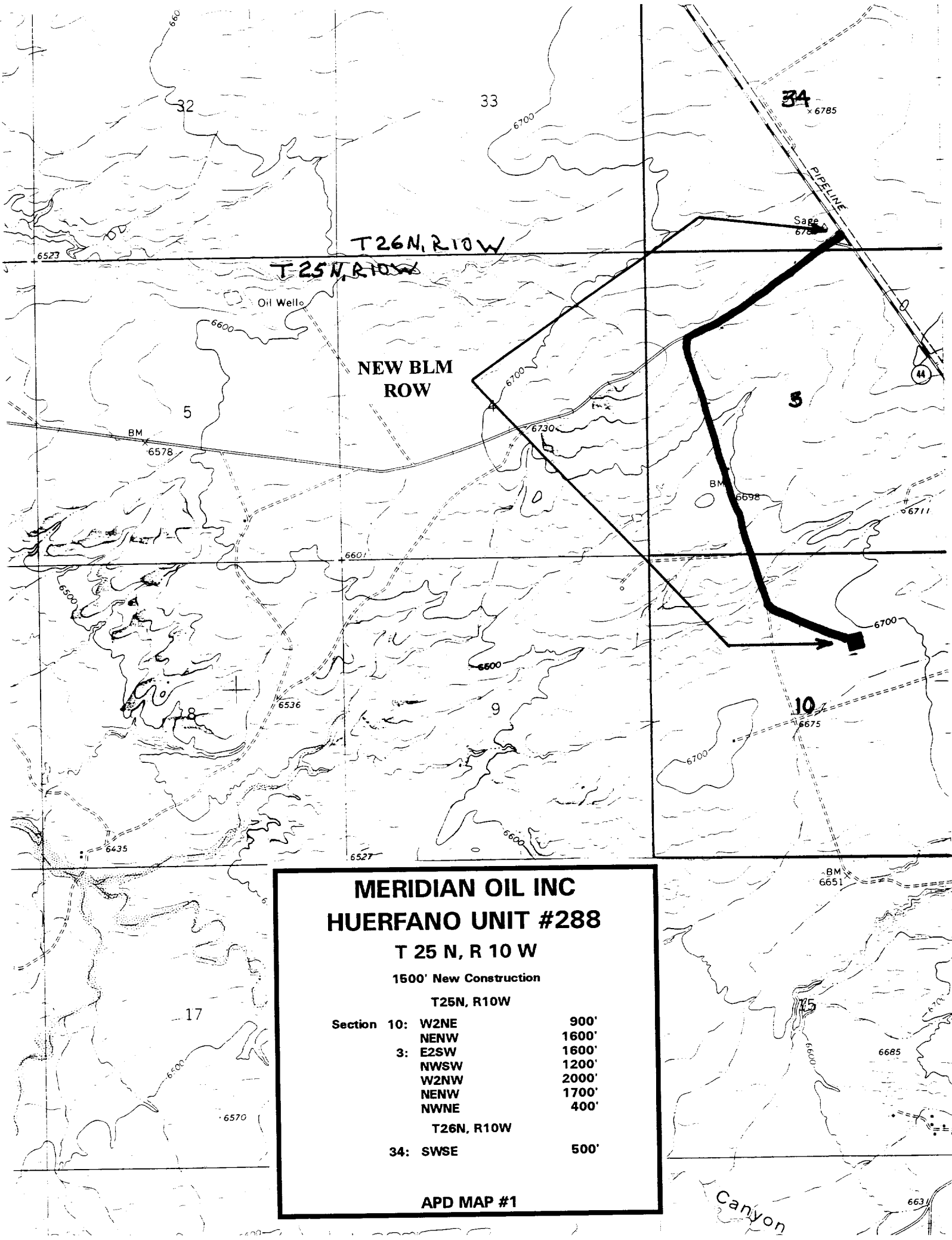
Signature <i>Peggy Bradfield</i>
Printed Name Peggy Bradfield
Title Regulatory Representative
Date 8-24-94

<sup>18</sup> SURVEYOR CERTIFICATION

I hereby certify that the well location shown on this plat was plotted from field notes of actual surveys made by me or under my supervision, and that the same is true and correct to the best of my belief.

Date of Survey 4-25-94
Signature and <i>WILLIE C. EDWARDS</i>
Certificate Number 9857





**MERIDIAN OIL INC  
HUERFANO UNIT #288**

**T 25 N, R 10 W**

**1500' New Construction**

**T25N, R10W**

Section 10:	W2NE	900'
	NENW	1600'
3:	E2SW	1600'
	NWSW	1200'
	W2NW	2000'
	NENW	1700'
	NWNE	400'

**T26N, R10W**

34:	SWSE	500'
-----	------	------

**APD MAP #1**