

UNITED STATES
DEPARTMENT OF THE INTERIOR
BUREAU OF LAND MANAGEMENT

APPLICATION FOR PERMIT TO DRILL, DEEPEN, OR PLUG BACK

1a. TYPE OF WORK

DRILL ☒

DEEPEN ☐

PLUG BACK ☐

b. TYPE OF WELL

OIL
WELL ☐

GAS
WELL ☒

OTHER ☐

SINGLE
ZONE ☒

MULTIPLE
ZONE ☐

2. NAME OF OPERATOR

Texakoma Oil and Gas Corporation (214) 701-9106

3. ADDRESS OF OPERATOR

5400 LBJ Freeway, Suite 500, Dallas, Tx. 75240

4. LOCATION OF WELL (Report location clearly and in accordance with any State requirements.)

At surface

520' FNL & 520' FEL

At proposed prod. zone

Same

14. DISTANCE IN MILES AND DIRECTION FROM NEAREST TOWN OR POST OFFICE*

26 air miles S of Farmington, NM

10. DISTANCE FROM PROPOSED*

LOCATION TO NEAREST
PROPERTY OR LEASE LINE, FT.
(Also to nearest drig. unit line, if any)

520'

16. NO. OF ACRES IN LEASE

320

17. NO. OF ACRES ASSIGNED
TO THIS WELL

320

18. DISTANCE FROM PROPOSED LOCATION*

TO NEAREST WELL, DRILLING, COMPLETED,
OR APPLIED FOR, ON THIS LEASE, FT.

N/A

19. PROPOSED DEPTH

1,200'

20. ROTARY OR CABLE TOOLS

Rotary

21. ELEVATIONS (Show whether DF, RT, GR, etc.)

This action is subject to technical and procedural review pursuant to 43 CFR 3165.4 and appeal pursuant to 43 CFR 3165.4. 6,252' ungraded ground

22. APPROX. DATE WORK WILL START*

July 30, 1994

23. PROPOSED CASING AND CEMENTING PROGRAM

DRILLING OPERATIONS AUTHORIZED ARE
SUBJECT TO COMPLIANCE WITH ATTACHED
"GENERAL REQUIREMENTS."

SIZE OF HOLE	SIZE OF CASING	WEIGHT PER FOOT	SETTING DEPTH
12-1/4"	8-5/8"	24# (J-55)	120'
7-7/8"	5-1/2"	15.5# (J-55)	1,200'

~140 cu ft and to surface
~270 cu ft and to surface

Non-standard location due to proposed NIIP/NAPI center pivot.
Separate application is being made to OCD for NSL.

RECEIVED
SEP 26 1994

OIL CON. DIV.
DIST. 3

cc: BLM(3 +2 for OCD), BIA, NIIP, Tribe

IN ABOVE SPACE DESCRIBE PROPOSED PROGRAM: If proposal is to deepen or plug back, give data on present productive zone and proposed new productive zone. If proposal is to drill or deepen directionally, give pertinent data on subsurface locations and measured and true vertical depths. Give blowout preventer program, if any.

24.

SIGNED

TITLE

Consultant

DATE

7-14-94

(This space for Federal or State office use)

PERMIT NO.

APPROVAL DATE

APPROVED BY

TITLE

CONDITIONS OF APPROVAL, IF ANY:

APPROVED
AS AMENDED

SEP 23 1994

Chip Navarone
DISTRICT MANAGER

*See Instructions On Reverse Side

Form C-102
Revised February 21, 1994
Instructions on back
Appropriate District Office
State Lease - 4 Copies
Fee Lease - 3 Copies

894 JUL 18 PM 12:26

WELL LOCATION AND ACREAGE DEDICATION PLAT

¹⁰ Surface Location

¹¹ Bottom Hole Location If Different From Surface

¹² Dedicated Acres	¹³ Joint or Infill	¹⁴ Consolidation Code	¹⁵ Order No.
-------------------------------	-------------------------------	----------------------------------	-------------------------

<p>16</p>	<p>520'</p> <p>520'</p>	<p>17 OPERATOR CERTIFICATION</p> <p>I hereby certify that the information contained herein is true and complete to the best of my knowledge and belief</p>
<p>RECEIVED</p> <p>SEP 26 1994</p>		<p><i>Brian Wood</i></p> <p>Signature</p> <p>Brian Wood</p> <p>Printed Name</p> <p>Consultant</p> <p>Title</p> <p>July 14, 1994</p> <p>Date</p>
<p>OIL CON. DIV.</p> <p>DIST. 3</p>		<p>18 SURVEYOR CERTIFICATION</p> <p>I hereby certify that the well location shown on this plat was plotted from field notes of actual surveys made by me or under my supervision, and that the same is true and correct to the best of my belief.</p> <p>Date of Survey</p> <p>Signature and Seal of Professional Surveyor:</p> <p>6844</p> <p>Certificate Number</p>

17 OPERATOR CERTIFICATION

I hereby certify that the information contained herein is true and complete to the best of my knowledge and belief

Brian E. Wood
Signature

Signature Brian Wood

Printed Name Consultant

Title July 14, 1994

Date _____

¹⁸SURVEYOR CERTIFICATION

I hereby certify that the well location shown on this plat was plotted from field notes of actual surveys made by me or under my supervision, and that the same is true and correct to the best of my belief.

6 J. S. HUDSON

Signature and Seal of Professional Surveyor:

6844

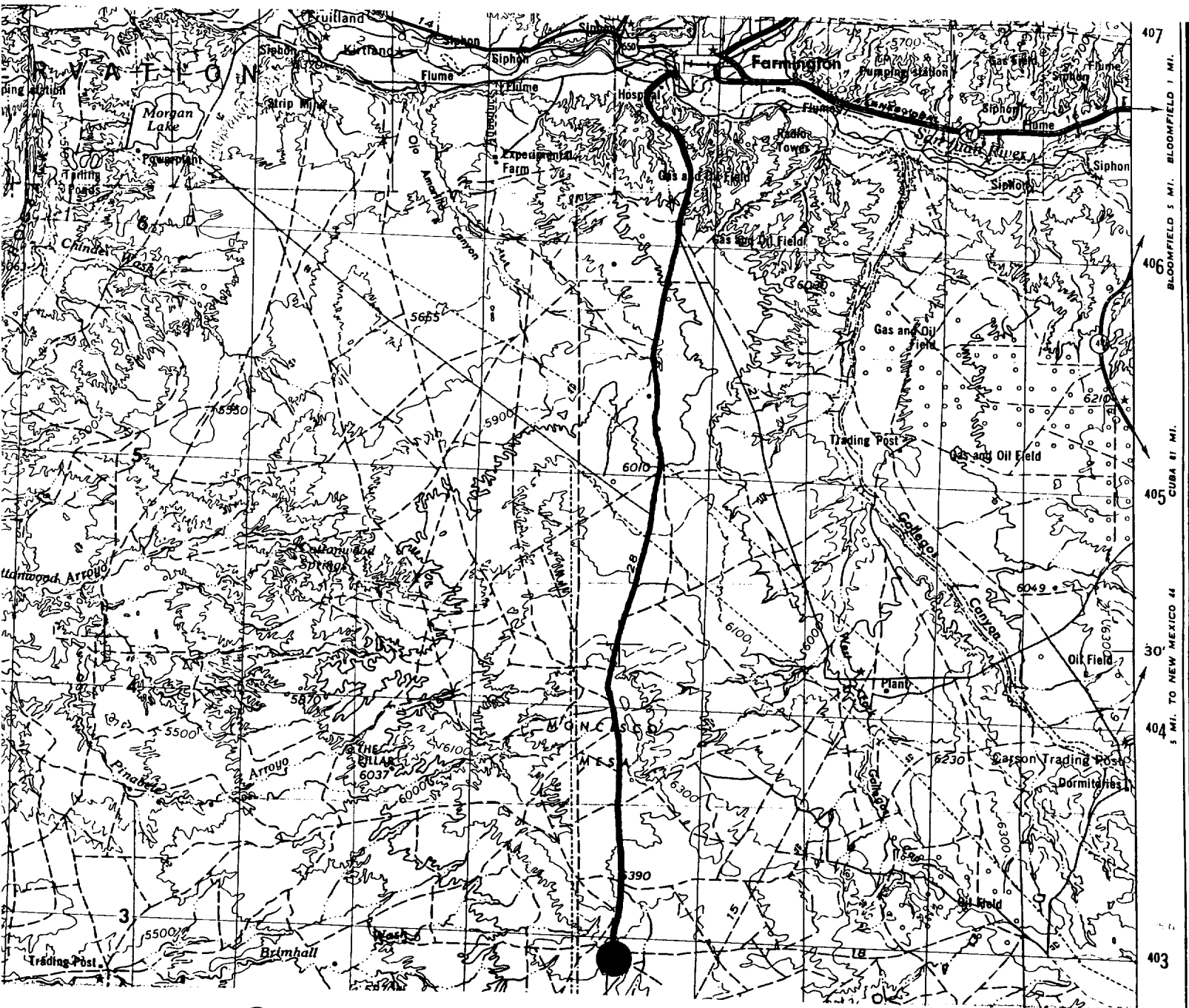
REGISTERED LAND SURVEYOR

6847

Certificate Number

**Texakoma Oil and Corporation
Navajo 30 #1
520' FNL & 520' FEL
Sec. 30, T. 25 N., R. 13 W.
San Juan County, NM**

PAGE 10

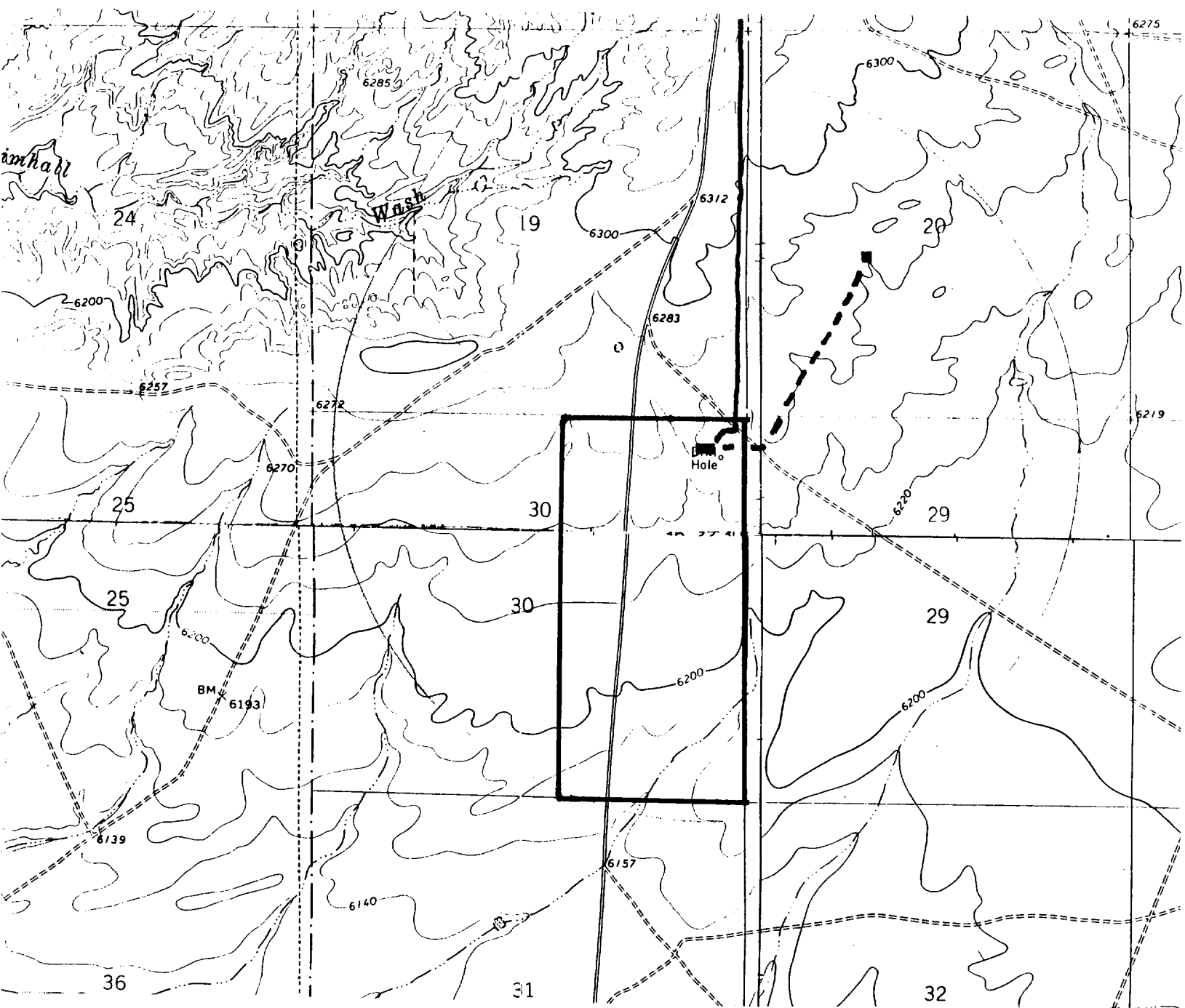


Wellsite: ●

Access Route: 

Texakoma Oil and Corporation
Navajo 30 #1
520' FNL & 520' FEL
Sec. 30, T. 25 N., R. 13 W.
San Juan County, NM

PAGE 11



Navajo 30 #1 Well: ■

Access Route: ~

Mustang #2: ■

Proposed Pipeline: - - -

Lease: L