

UNITED STATES
DEPARTMENT OF THE INTERIOR
BUREAU OF LAND MANAGEMENT

Form approved.
Budget Bureau No. 1004-0136
Expires: December 31, 1991

APPLICATION FOR PERMIT TO DRILL OR DEEPEN

1a. TYPE OF WORK

DRILL ☒

DEEPEN ☐

b. TYPE OF WELL

OIL WELL ☐

GAS WELL ☒

OTHER

SINGLE ZONE ☒

MULTIPLE ZONE ☐

2. NAME OF OPERATOR

Attention:

Amoco Production Company 778

Julie L. Acevedo

3. ADDRESS AND TELEPHONE NO.

P.O. Box 800, Denver, Colorado 80201

(303) 830-6003

4. LOCATION OF WELL (Report location clearly and in accordance with any State requirements. *)

At surface

1660FNL

1615FWL

At proposed prod. zone

14. DISTANCE IN MILES AND DIRECTION FROM NEAREST TOWN OR POST OFFICE*

34 miles from Aztec, N.M.

15. DISTANCE FROM PROPOSED* LOCATION TO NEAREST PROPERTY OR LEASE LINE, FT.
(Also to nearest drlg. unit line, if any)

18. DISTANCE FROM PROPOSED LOCATION* TO NEAREST WELL, DRILLING, COMPLETION OR APPLIED FOR, ON THIS LEASE, FT.

21. ELEVATIONS (Show whether DF, RT, GR., etc.)

6519' GL ✓

16. NO. OF ACRES IN LEASE

956.73

17. NO. OF ACRES ASSIGNED TO THIS WELL

W / 317.86 ✓

19. PROPOSED DEPTH

507' TD

20. ROTARY OR CABLE TOOLS

Rotary

22. APPROX. DATE WORK WILL START*

06-01-95

23. PROPOSED CASING AND CEMENTING PROGRAM

SIZE OF HOLE	GRADE, SIZE OF CASING	WEIGHT PER FOOT	SETTING DEPTH	QUANTITY OF CEMENT
8.75"	7"	23#	250'	95cu.ft. CI B Circ. to surface
6.25"	2 7/8"	6.5#	6507'	1305cu.ft. CI B

Notice of staking submitted: 2/27/95 as the Hanson #2E.

DRILLING AND DEEPENING OPERATIONS AUTHORIZED ARE
SUBJECT TO COMPLIANCE WITH ATTACHED
"GENERAL REQUIREMENTS"

Description of

Drillsite Lease:

T25N-R10W

Section 5: Lots 3, 4, S/2 NW/4, SW/4 (AKA W/2)

Section 6: Lots 1 thru 7, S/2 NE/4, SE/4, SE/4 NW/4, E/2 SW/4 (ALL), containing 956.73 acres, more or less

RECEIVED
APR 24 1995

OIL CON. DIV.
DIST. 3

IN ABOVE SPACE DESCRIBE PROPOSED PROGRAM: If proposal is to deepen, give data on present productive zone and proposed new productive zone. If proposal is to drill or deepen directionally, give pertinent data on subsurface locations and measured and true vertical depths. Give blowout preventer program, if any.

24.

SIGNED

TITLE Sr. Staff Assistant

DATE

04-14-1995

(This space for Federal or State office use)

PERMIT NO.

APPROVAL DATE

Application approval does not warrant or certify that the applicant holds legal or equitable title to those rights in the subject lease which would entitle the applicant to a lease.

CONDITIONS OF APPROVAL, IF ANY:

APPROVED BY

TITLE

NMOCD

*See Instructions On Reverse Side

Title 18 U.S.C. Section 1001, makes it a crime for any person knowingly and willfully to make to any department or agency of the United States any false, fictitious or fraudulent statements or representations as to any matter within its jurisdiction.

APPROVED
AS AMENDED

APR 24 1995
DISTRICT MANAGER

District I
PO Box 1980, Hobbs, NM 88241-1980
District II
PO Drawer DD, Artesia, NM 88211-0719
District III
1000 Rta Brazos Rd., Aztec, NM 87410
District IV
PO Box 2088, Santa Fe, NM 87504-2088

State of New Mexico
Energy, Minerals & Natural Resources Department

OIL CONSERVATION DIVISION
PO Box 2088
Santa Fe, NM 87504-2088

Form C-102
Revised February 21, 1994
Instructions on back
Submit to Appropriate District Office
State Lease - 4 Copies
Fee Lease - 3 Copies

☐ AMENDED REPORT

WELL LOCATION AND ACREAGE DEDICATION PLAT

API Number 30-045-79240		Pool Code 71599	Pool Name Basin Dakota
Property Code 629	Property Name Hanson		Well Number #2E
OGRID No. 00778	Operator Name AMOCO PRODUCTION COMPANY		Elevation 6519

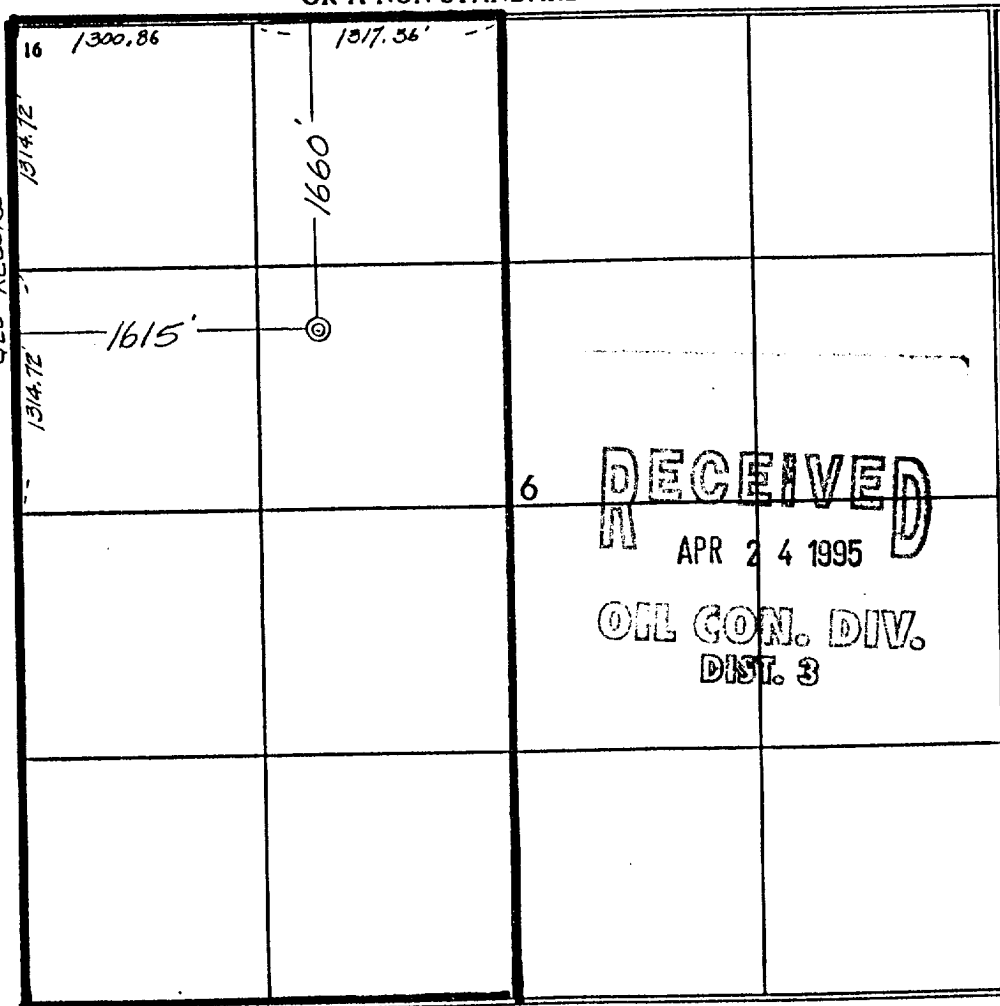
10 Surface Location

UL or lot no.	Section	Township	Range	Lot Idn	Feet from the	North/South line	Feet from the	East/West line	County
F	6	25 N	10 W		1660	NORTH	1615	WEST	SAN JUAN

11 Bottom Hole Location If Different From Surface

UL or lot no.	Section	Township	Range	Lot Idn	Feet from the	North/South line	Feet from the	East/West line	County
Dedicated Acres 317.86		Joint or Infill		Consolidation Code		Order No.			

NO ALLOWABLE WILL BE ASSIGNED TO THIS COMPLETION UNTIL ALL INTERESTS HAVE BEEN CONSOLIDATED
OR A NON-STANDARD UNIT HAS BEEN APPROVED BY THE DIVISION



17 OPERATOR CERTIFICATION

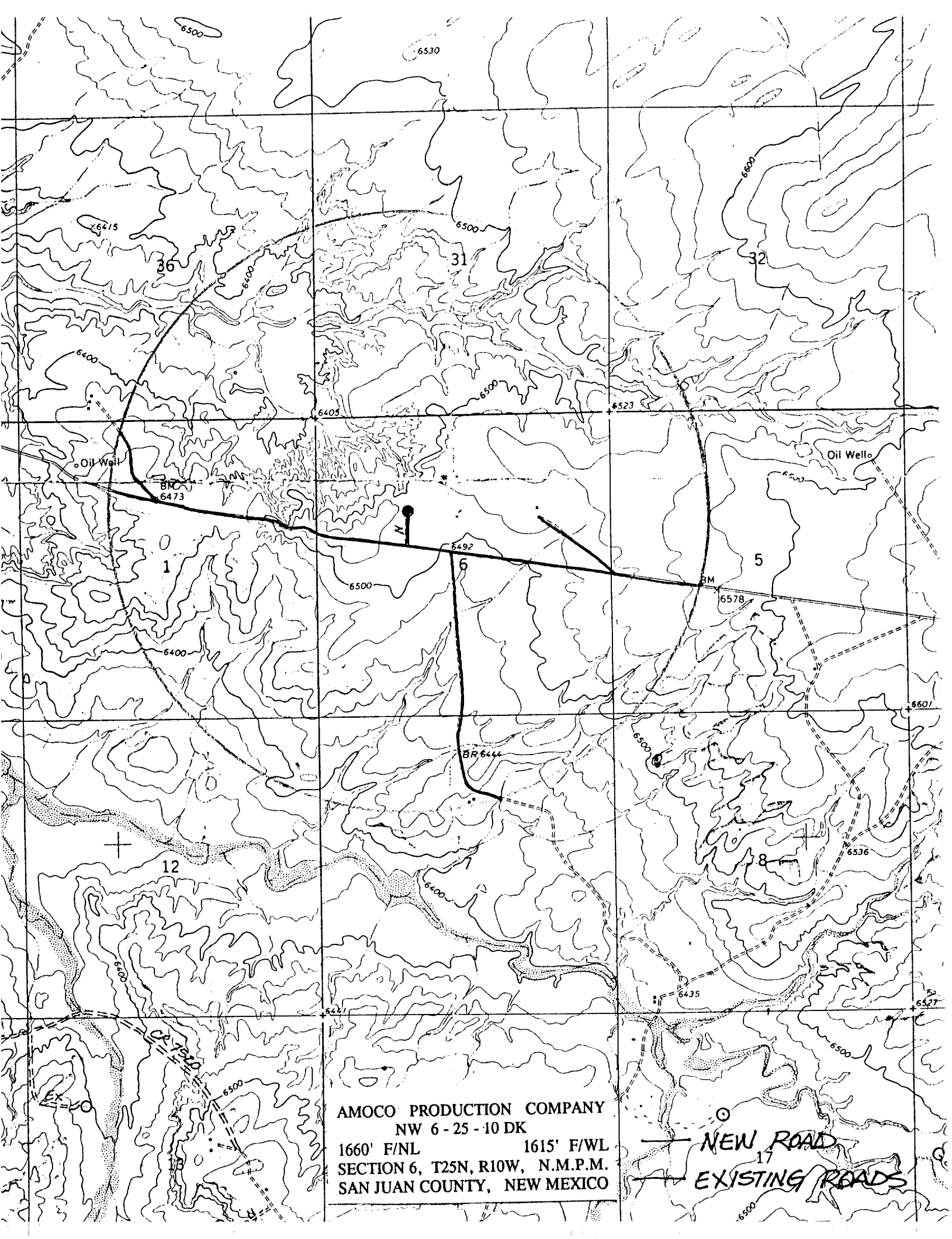
I hereby certify that the information contained herein is true and complete to the best of my knowledge and belief

Signature
Julie L. Acevedo
Printed Name
Sr. Staff Assistant
Title
2/27/95
Date

18 SURVEYOR CERTIFICATION

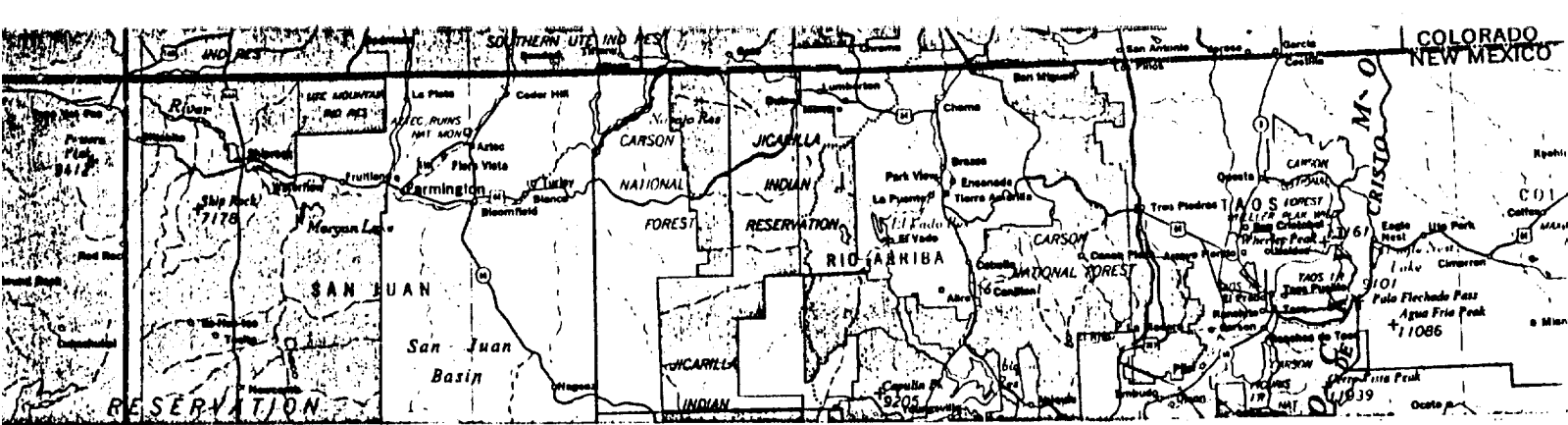
I hereby certify that the well location shown on this plat was plotted from field notes of actual surveys made by me or under my supervision, and that the same is true and correct to the best of my belief.

February 1, 1995
Date of Survey
Signature and Seal of Professional Surveyor:
GARY D. VAAN
NEW MEXICO
REGISTERED PROFESSIONAL LAND SURVEYOR
7016
Certificate Number



AMOCO PRODUCTION COMPANY
NW 6 - 25 - 10 DK
1660' F/NL 1615' F/WL
SECTION 6, T25N, R10W, N.M.P.M.
SAN JUAN COUNTY, NEW MEXICO

NEW ROAD
EXISTING ROADS



NW 6-25-10 DK

660' F/NL

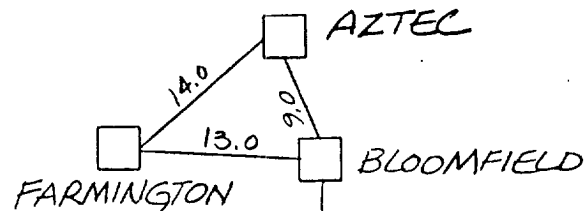
1615' F/WL

SECTION 6, T25N, R10W, N.M.P.M.

RAIL POINT: 177 miles from Montrose, Co.

MUD POINT: 34 miles from Aztec, N.M.

CEMENT POINT: 38 miles from Farmington, N.M.



NEW ROAD (600'±)

NW 6-25-10 DK

COUNTY ROAD 7300

358