

UNITED STATES  
DEPARTMENT OF THE INTERIOR

Form approved.  
Budget Bureau No.1004-0136  
Expires: December 31, 1991

BUREAU OF LAND MANAGEMENT

APPLICATION FOR PERMIT TO DRILL OR DEEPEN

1a. TYPE OF WORK

b. TYPE OF WELL **DRILL** ☒ **DEEPEN** ☐  
OIL WELL ☐ GAS WELL ☒ OTHER ☐ SINGLE ZONE ☒ MULTIPLE ZONE ☐

2. NAME OF OPERATOR **CROSS TIMBERS OPERATING CO**  
**Amoco Production Company** Attention: **Julie L. Acevedo** **16067**

3. ADDRESS AND TELEPHONE NO.  
P.O. Box 800, Denver, Colorado 80201 (303) 830-6003

4. LOCATION OF WELL (Report location clearly and in accordance with any State requirements.)

At surface 1850FNL 1840FEL  
At proposed prod. zone

14. DISTANCE IN MILES AND DIRECTION FROM NEAREST TOWN OR POST OFFICE

32 Miles from Aztec, N.M.

15. DISTANCE FROM PROPOSED LOCATION TO NEAREST PROPERTY OR LEASE LINE, FT.  
(Also to nearest drlg. unit line, if any)

16. NO. OF ACRES IN LEASE  
160

17. NO. OF ACRES ASSIGNED TO THIS WELL  
320 E/2

18. DISTANCE FROM PROPOSED LOCATION TO NEAREST WELL, DRILLING, COMPLETED, OR APPLIED FOR, ON THIS LEASE, FT.

19. PROPOSED DEPTH  
6144' TD

20. ROTARY OR CABLE TOOLS  
Rotary

21. ELEVATIONS BELOW GROUND SURFACE, SUBJECT TO technical and procedural review pursuant to 43 CFR 3165.3

23. and appeal pursuant to 43 CFR 3165.4

PROPOSED CASING AND CEMENTING PROGRAM

SIZE OF HOLE	GRADE, SIZE OF CASING	WEIGHT PER FOOT	SETTING DEPTH	QUANTITY OF CEMENT
8.75"	7" J-55	23#	250'	100sx CI B Cmt to Surface
6.25"	2.875" N-80	6.5#	6144'	1198 Cu. Ft. CI B Cmt to Surface

Notice of Staking submitted as the Canyon #1E on 12/21/95

Lease Description T25N-R11W: Section 10: NE/4 containing 160 acres, more or less.

RECEIVED  
BLM

96 OCT 22 PM 1:17

070 FARMINGTON, NM

RECEIVED  
SEP 28 1998  
OIL CON. DIV.  
DIST. 3

070 FARMINGTON, NM

94 DEC 22 PM 1:17

RECEIVED  
BLM

IN ABOVE SPACE DESCRIBE PROPOSED PROGRAM: If proposal is to deepen, give data on present productive zone and proposed new productive zone. If proposal is to drill or deepen directionally, give pertinent data on subsurface locations and measured and true vertical depths. Give blowout preventer program, if any.

24.

SIGNED *Julie L. Acevedo*

TITLE Sr. Staff Assistant

DATE 12-21-1994

(This space for Federal or State office use)

PERMIT NO.

APPROVAL DATE

SEP 03 1998

Application approval does not warrant or certify that the applicant holds legal or equitable title to those rights in the subject lease which would entitle the applicant to conduct operations thereon.  
CONDITIONS OF APPROVAL, IF ANY:

APPROVED BY

TITLE

DATE

35435

OPERATOR

\*See Instructions On Reverse Side

Title 18 U.S.C. Section 1001, makes it a crime for any person knowingly and willfully to make to any department or agency of the United States any false, fictitious or fraudulent statements or representations as to any matter within its jurisdiction.

District I  
PO Box 1980, Hobbs, NM 88241-1980

District II

PO Drawer DD, Artesia, NM 88211-0719

District III

1000 Rio Brazos Rd., Aztec, NM 87410

District IV

PO Box 2088, Santa Fe, NM 87504-2088

State of New Mexico  
Energy, Minerals & Natural Resources Department

Form C-102  
Revised February 21, 1994

Instructions on back

Submit to Appropriate District Office

State Lease - 4 Copies

Fee Lease - 3 Copies

☐ AMENDED REPORT

070 FARMINGTON, NM

WELL LOCATION AND ACREAGE DEDICATION PLAT

API Number 30-045-29683	Pool Code 71599	Pool Name Basin Dakota
Property Code 388 22669	Property Name Canyon	Well Number #1E
OGRID No. 00778	Operator Name CROSS TIMBER OPERATING CO. AMOCO PRODUCTION COMPANY	Elevation 6407

10 Surface Location

UL or lot no. G	Section 10	Township 25 N	Range 11 W	Lot Idn	Feet from the 1850	North/South line NORTH	Feet from the 1840	East/West line EAST	County SAN JUAN
--------------------	---------------	------------------	---------------	---------	-----------------------	---------------------------	-----------------------	------------------------	--------------------

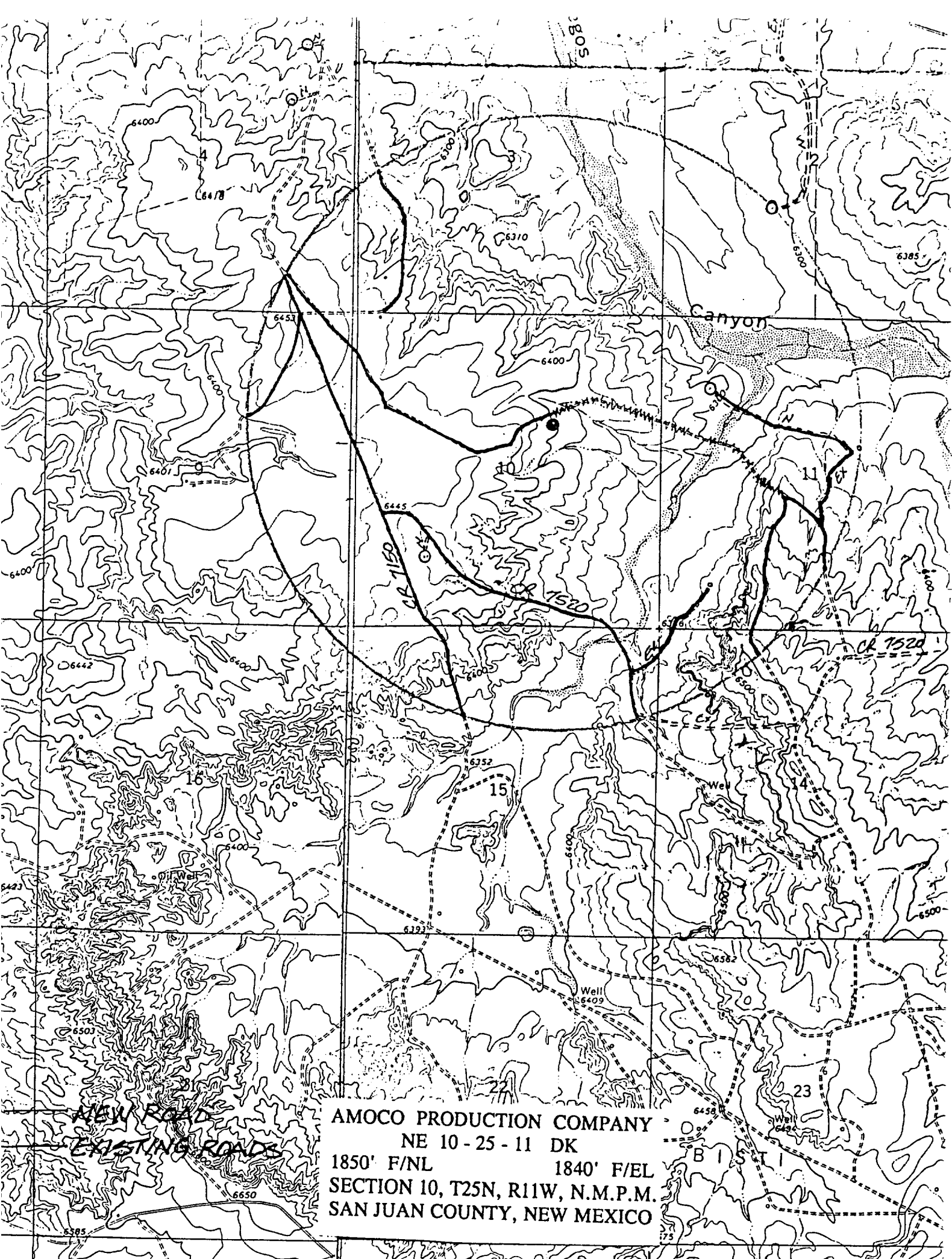
11 Bottom Hole Location If Different From Surface

UL or lot no.	Section	Township	Range	Lot Idn	Feet from the	North/South line	Feet from the	East/West line	County
---------------	---------	----------	-------	---------	---------------	------------------	---------------	----------------	--------

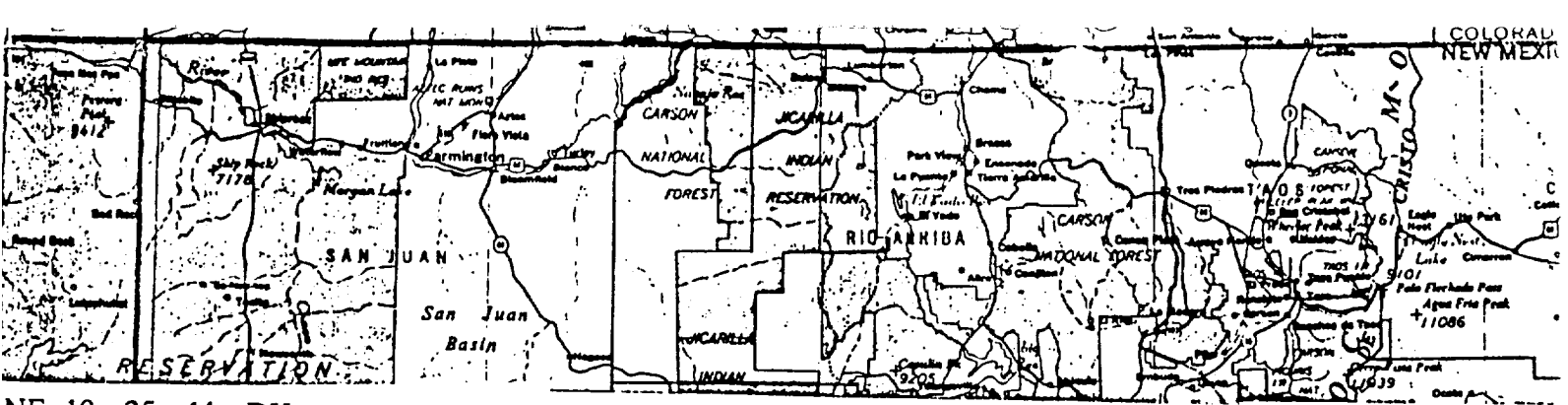
12 Dedicated Acres 320	13 Joint or Infill	14 Consolidation Code	15 Order No.
---------------------------	--------------------	-----------------------	--------------

NO ALLOWABLE WILL BE ASSIGNED TO THIS COMPLETION UNTIL ALL INTERESTS HAVE BEEN CONSOLIDATED  
GLO RECORD OR A NON-STANDARD UNIT HAS BEEN APPROVED BY THE DIVISION

16	1319.50'	1319.51'	17 OPERATOR CERTIFICATION I hereby certify that the information contained herein is true and complete to the best of my knowledge and belief Signature Julie L. Acevedo Printed Name Sr. Staff Assistant Title 12/19/94 Date
RECEIVED SEP 28 1993 OIL CON. DIV. DIST. 3	1850'	1321.16'	
10	1840'	1321.15'	18 SURVEYOR CERTIFICATION I hereby certify that the well location shown on this plat was plotted from field notes of actual surveys made by me or under my supervision, and that the same is true and correct to the best of my belief. November 21, 1994 Date of Survey Signature and Seal of Professional Surveyor GARY D. VAAY NEW MEXICO REGISTERED PROFESSIONAL LAND SURVEYOR 7016 Certificate Number



AMOCO PRODUCTION COMPANY  
NE 10 - 25 - 11 DK  
1850' F/NL 1840' F/EL  
SECTION 10, T25N, R11W, N.M.P.M.  
SAN JUAN COUNTY, NEW MEXICO



NE 10-25-11 DK

1850' F/NL

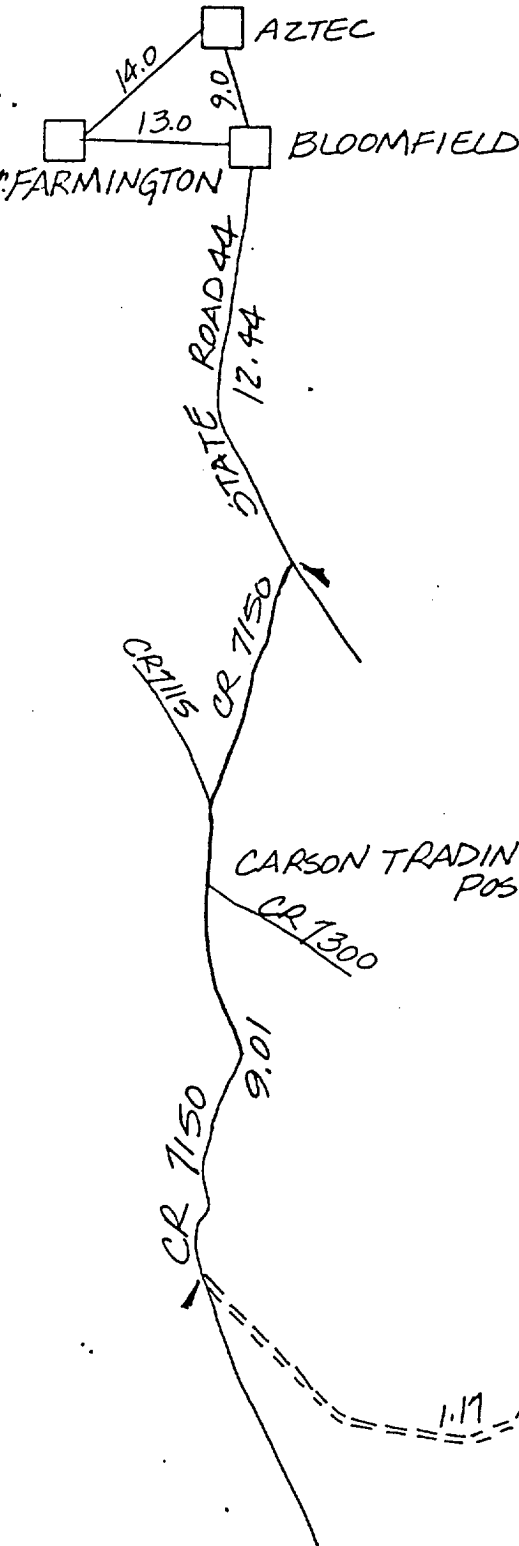
1840' F/EL

SECTION 10, T25N, R11W, N.M.P.M.

RAIL POINT: 17.5 miles from Montrose, Co.

MUD POINT: 32 miles from Aztec, N.M.

CEMENT POINT: 36 miles from Farmington, N.M.



1.17 NE 10-25-11 DK