

District I  
 PO Box 1980, Hobbs, NM 88241-1980  
 District II  
 811 South First, Artesia, NM 88210  
 District III  
 1000 Rio Brazos Rd., Aztec, NM 87410  
 District IV  
 2040 South Pacheco, Santa Fe, NM 87505

State of New Mexico  
 Energy, Minerals & Natural Resources Department

Form C-101

Revised October 18, 1994

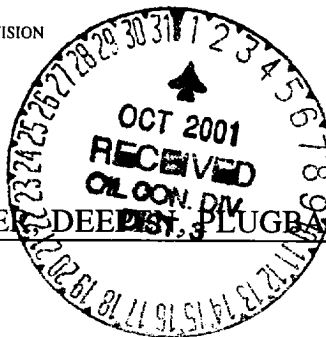
Instructions on back

Submit to Appropriate District Office

State Lease - 6 Copies

Fee Lease - 5 Copies

OIL CONSERVATION DIVISION  
 2040 South Pacheco  
 Santa Fe, NM 87505




AMENDED REPORT

APPLICATION FOR PERMIT TO DRILL, RE-ENTER, DEEPEN, PLUG BACK, OR ADD A ZONE

<sup>1</sup> Operator Name and Address. <b>Merrion Oil &amp; Gas Corporation</b> 610 Reilly Avenue Farmington, New Mexico 87401		<sup>2</sup> OGRID Number 014634
		<sup>3</sup> API Number 30 - 0 45-30858
<sup>4</sup> Property Code 28928	<sup>5</sup> Property Name <b>Hoodoo</b>	<sup>6</sup> Well No. <b>1</b>

<sup>7</sup> Surface Location

UL or lot no.	Section	Township	Range	Lot Idn	Feet from the	North/South line	Feet from the	East/West line	County
A	16	25N	13W		660'	North	660'	East	San Juan

<sup>8</sup> Proposed Bottom Hole Location If Different From Surface

UL or lot no.	Section	Township	Range	Lot Idn	Feet from the	North/South line	Feet from the	East/West line	County
<sup>9</sup> Proposed Pool 1 Basin Fruitland					<sup>10</sup> Proposed Pool 2				

<sup>11</sup> Work Type Code N	<sup>12</sup> Well Type Code G	<sup>13</sup> Cable/Rotary Rotary	<sup>14</sup> Lease Type Code S	<sup>15</sup> Ground Level Elevation
<sup>16</sup> Multiple No	<sup>17</sup> Proposed Depth 1410' KB	<sup>18</sup> Formation Fruitland Coal	<sup>19</sup> Contractor L&B Speed Drill	<sup>20</sup> Spud Date As Soon As Permitted

<sup>21</sup> Proposed Casing and Cement Program

Hole Size	Casing Size	Casing weight/foot	Setting Depth	Sacks of Cement	Estimated TOC
8-3/4"	7" J55	23 ppf	~120' KB	~30 sx (35 cuft)	Surface
6-1/4"	4-1/2" J55	10.5 ppf	~1410'KB	~106 sx (174 cuft)	Surface

<sup>22</sup> Describe the proposed program. If this application is to DEEPEN or PLUG BACK give the data on the present productive zone and proposed new productive zone. Describe the blowout prevention program, if any. Use additional sheets if necessary.

Merrion Oil & Gas proposes to drill 8 3/4" hole with native mud to approx. 120' KB and set 9 5/8" 36# J55 surface casing, cement to surface with ~57 sx 'B' w/ 2% CaCl<sub>2</sub> (67 ft<sup>3</sup>). Will drill 6 1/4" hole to TD @ approx. 4000' KB with low solids non-dispersed gel mud system. Run open hole surveys. Collect core samples from Fruitland Coal and from Mesaverde (for possible use as SWD zone at a later date). Move uphole to Fruitland coal, if coal appears productive, will set 7" 23 ppf J55 production casing from ±4000'KB to surface. Will cement first stage with 316 sx 'B' (373 ft<sup>3</sup>) to fill to DV tool. Will cement second stage from 2300' with 80sx (164 cf) lead slurry followed by 152 sx 'B' (179 ft<sup>3</sup>) cement to fill from DV tool to surface. Top of cement should circulate to surface (will adjust volumes based upon caliper log). If cement does not reach surface, a temperature log or cement bond log will be run to determine top of cement.

Will test Fruitland Coal through perforated casing. Will fracture stimulate and put on for production test.

Drilling operations below surface casing will be conducted with a Bag type BOP in place, minimum working pressure 1000 psig.

Formation tops: Undif Tertiary - Surface', Fruitland - 920', Main Coal - 1195', Pictured Cliffs - 1240'.

<sup>23</sup> I hereby certify that the information given above is true and complete to the best of my knowledge and belief.

Signature:

Printed name: **Connie S. Dinning**

Title: **Production Engineer**

Date: **September 26, 2001** Phone: **505-327-9801**

**OIL CONSERVATION DIVISION**

Approved by:

Title: **DEPUTY OIL & GAS INSPECTOR DIST. 3**

Approval Date: **OCT - 1 2001** Expiration Date: **OCT - 1 2002**

Conditions of Approval :  
 Attached

State of New Mexico  
Energy, Minerals & Mining Resources Department  
**OIL CONSERVATION DIVISION**  
2040 South Pacheco  
Santa Fe, NM 87505

Form C - 102

AMENDED REPORT

**WELL LOCATION AND ACREAGE DEDICATION PLAT**

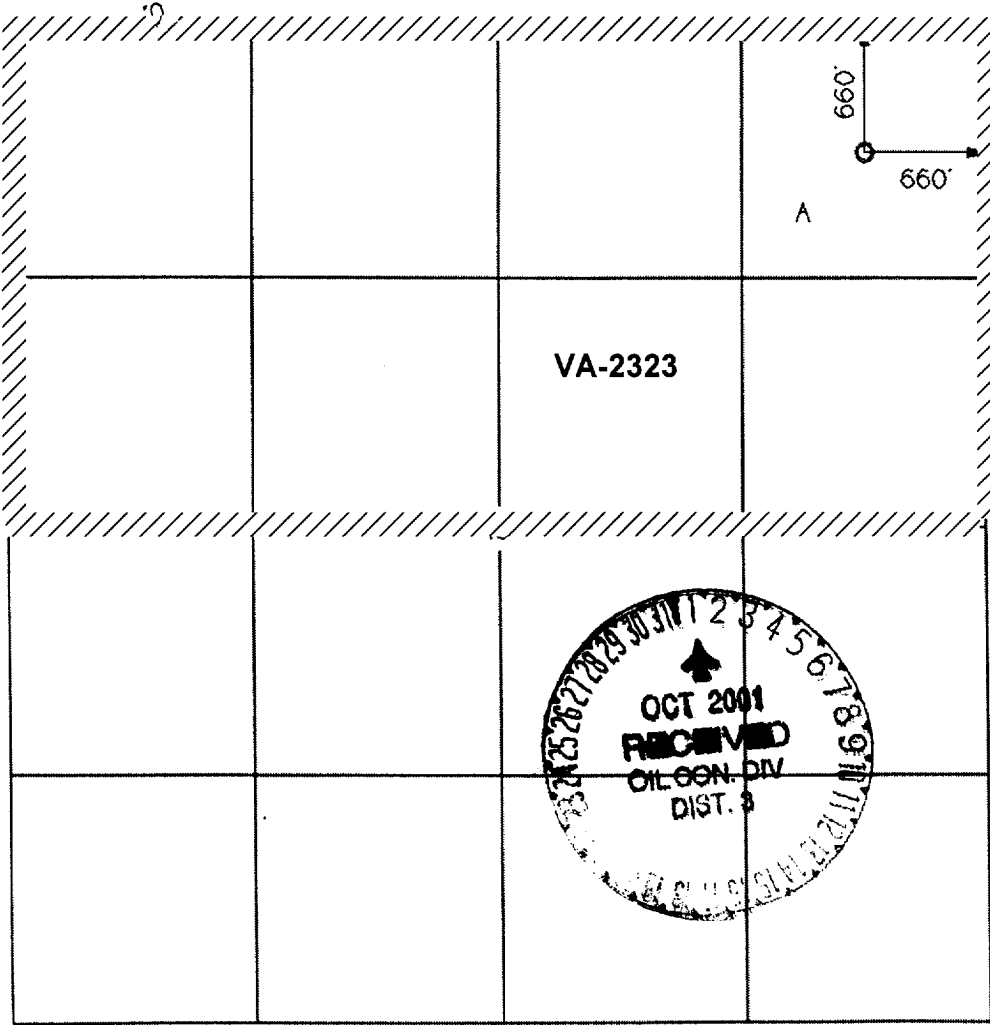
APA Number <b>30045-30858</b>	Pool Code <b>71629</b>	Pool Name <b>Basin Fruitland Coal</b>
Property Code <b>28928</b>	Property Name <b>Hoodoo</b>	
OGRID No. <b>014634</b>	Operator Name <b>MERRION OIL &amp; GAS</b>	
		Well Number <b>1</b>
		Elevation <b>6322'</b>

Surface Location									
UL or Lot	Sec.	Twp.	Rge.	Lot Lch.	Feet from	North/South	Feet from	East/West	County
A	16	25 N.	13 W.	ne ne	660'	NORTH	660'	EAST	SAN JUAN

Bottom Hole Location if Different From Surface									
UL or Lot	Sec.	Twp.	Rge.	Lot Lch.	Feet from	North/South	Feet from	East/West	County

Dedication <b>320 AC</b>	Joint ?	Consolidation	Order No.
-----------------------------	---------	---------------	-----------

NO ALLOWABLE WILL ASSIGNED TO THIS COMPLETION UNTIL ALL INTERESTS HAVE BEEN CONSOLIDATED  
OR A NON-STANDARD UNIT HAS BEEN APPROVED BY THE DIVISION



**OPERATOR CERTIFICATION**

I hereby certify that the information contained herein is true and complete to the best of my knowledge and belief.

Signature: *[Signature]*

Printed Name: **Connie S. Dinning**

Title: **Production Engineer**

Date: **August 15, 2001**

**SURVEYOR CERTIFICATION**

I hereby certify that the well location on this plat was plotted from field notes of actual surveys made by me or under my supervision, and that the same is true and correct to the best of my belief.

Date of Survey: **SEPT 2001**

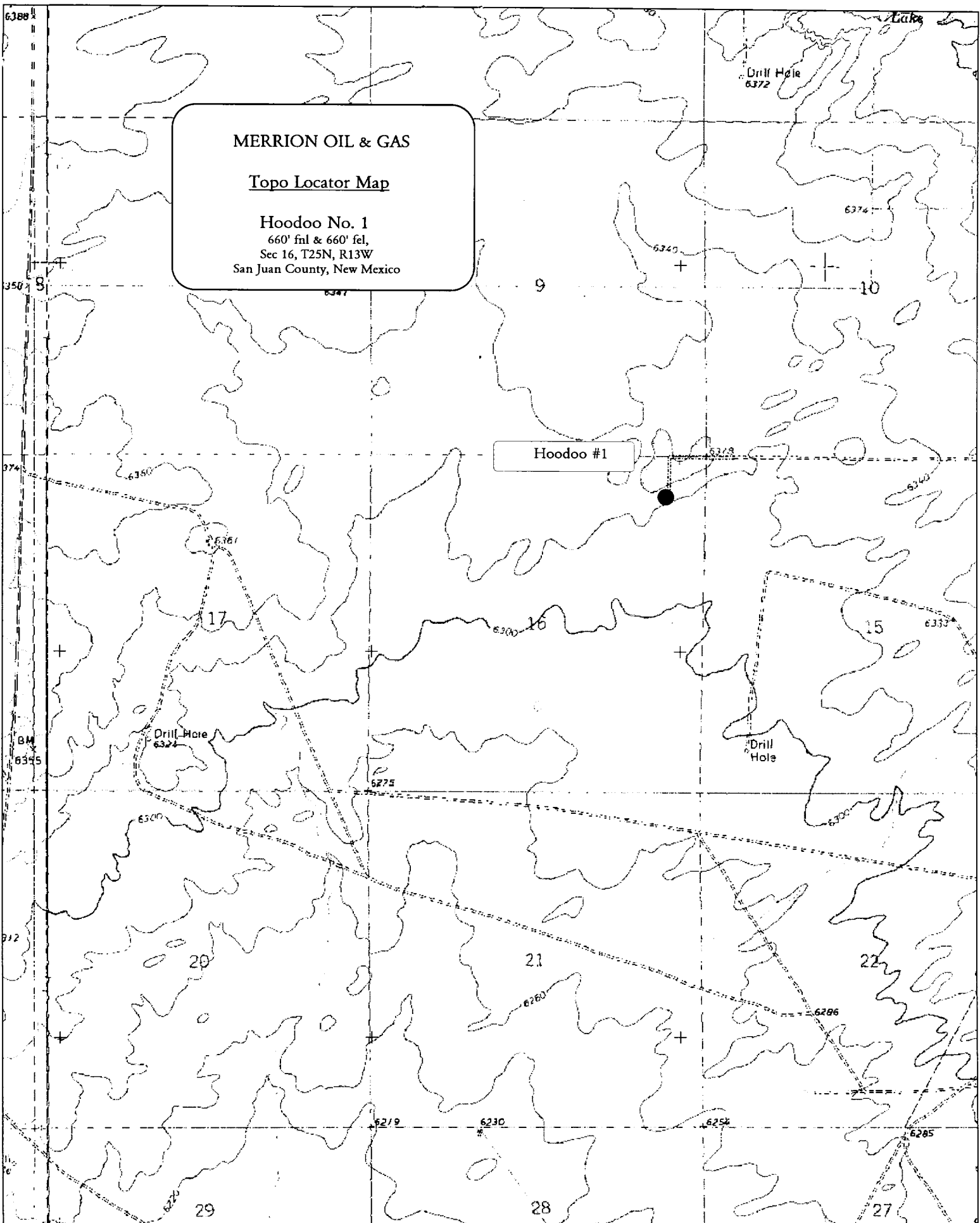
Signature and Seal of Professional Surveyor

**GERALD S. HADDLESTON**  
NEW MEXICO  
6844  
REGISTERED LAND SURVEYOR



MERRION OIL & GAS  
Topo Locator Map  
Hoodoo No. 1  
660' fml & 660' fel,  
Sec 16, T25N, R13W  
San Juan County, New Mexico

Hoodoo #1



2554

# Merrion Oil & Gas Corporation Wellbore Schematic Hoodoo No. 1

## Proposed Wellbore Configuration

Location: 660' fml & 660' fel (ne ne)  
Sec 16, T25N, R13W  
San Juan Co, New Mexico

Date: September 10, 2001

Elevation: 6,322' GL  
6,327' RKB

Prepared by: Connie Dinning

