

UNITED STATES
DEPARTMENT OF THE INTERIOR
BUREAU OF LAND MANAGEMENT

APPLICATION FOR PERMIT TO DRILL OR DEEPEN

1. TYPE OF WORK
DRILL ☒ DEEPEN ☐

2. TYPE OF WELL
OIL WELL ☐ GAS WELL ☒ OTHER ☐ SINGLE ZONE ☒ MULTIPLE ZONE ☐

3. NAME OF OPERATOR
Pure Resources

4. ADDRESS AND TELEPHONE NO.
P.O. Box 850, Bloomfield New Mexico

5. LOCATION OF WELL (Report location clearly and in accordance with any State requirement)*
At surface 2120' FNL and 700' FWL
At proposed prod. zone Same as Surface

6. DISTANCE IN MILES AND DIRECTION FROM NEAREST TOWN OR POST OFFICE*
21 miles south Bloomfield NM

7. DISTANCE FROM PROPOSED* LOCATION TO NEAREST PROPERTY OR LEASE LINE FT (Also to nearest drg. Unit line, if any)
700'

8. NO. OF ACRES IN LEASE
320

9. NO. OF ACRES ASSIGNED TO THIS WELL
320 W/P

10. DISTANCE FROM PROPOSED* LOCATION TO NEAREST WELL, DRILLING, COMPLETED OR APPLIED FOR, ON THIS LEASE, FT.
1622'

11. PROPOSED DEPTH
6140'

12. ROTARY OR CABLE TOOLS
Rotary

13. ELEVATIONS (Show whether DF, RT, GR)
6331' GR

14. APPROX. DATE WORK WILL START*
December 15, 2001

PROPOSED CASING AND CEMENTING PROGRAM

SIZE OF HOLE	GRADE, SIZE OF CASING	WEIGHT PER FOOT	SETTING DEPTH	QUANTITY OF CEMENT
12-1/4"	H-40 9-5/8"	32.3#	350'	285 SACKS "B" TOC @ SURFACE
8-3/4"	K-55 7"	20#	3000'	300 SACKS TYPE III TOC @ SURFACE
6-1/4"	N-80 4-1/2"	11.6#	6140'	SACKS 65/35 POZ TYPE III TOC TIED INTO 7" CAS

"Expedited APD/ROW"

Pure plans to drill the Navajo G12-#9, and complete in the Basin Dakota.

BOP- One double gate BOP with 3-1/2" pipe and blind rams, one choke manifold with adjustable and positive chokes, an accumulator will hydraulically operate BOP with 1 1/2 times the necessary capacity to close the rams and retain a minimum of 200 psi above recharge. Rotating head will be utilized during the drilling of the 6-1/4" hole.
(Schematics are attached)

procedural review pursuant to 43 CFR 3165.3
and appeal pursuant to 43 CFR 3165.4.

ALL PROPOSALS ARE
SUBJECT TO COMPLIANCE WITH ATTACHED
"GENERAL REQUIREMENTS"

IN ABOVE SPACE DESCRIBED PROGRAM: If proposal is to deepen, give data on present productive zone and proposed new productive zone. If proposal is to drill or deepen directionally, give pertinent data on subsurface locations and measured and true vertical depths. Give blowout preventer program, if any.

SIGNED Mike C. Phillips TITLE San Juan Basin Area Drig/Prod Foreman DATE 11/22/01

(This space for Federal or State office use)

PERMIT NO. _____ APPROVAL DATE _____

Application approval does not warrant or certify that the applicant holds legal or equitable title to those rights in the subject lease which would entitle the application to conduct operations thereon.
CONDITIONS OF APPROVAL, IF ANY:

APPROVED BY [Signature] TITLE AFM DATE 12/13/01

*See Instructions On Reverse Side

Title 18 U.S.C. Section 1001, make it a crime for any person knowingly and willfully to make to any department or agency of the United States any false, fictitious or fraudulent statements or representations as to any matter within its jurisdiction.

OPENBOOK R NMOOD

DISTRICT I
1625 N. French Dr., Hobbs, N.M. 88240

DISTRICT II
811 South First, Artesia, N.M. 88210

DISTRICT III
1000 Rio Brazos Rd., Aztec, N.M. 87410

DISTRICT IV
2040 South Pacheco, Santa Fe, NM 87505

State of New Mexico
Energy, Minerals & Natural Resources Department

Form C-102
Revised August 15, 2000

Submit to Appropriate District Office
State Lease - 4 Copies
Fee Lease - 3 Copies

OIL CONSERVATION DIVISION

2040 South Pacheco
Santa Fe, NM 87505

☐ AMENDED REPORT

WELL LOCATION AND ACREAGE DEDICATION PLAT

*API Number 30-045- 30934		*Pool Code 71599	*Pool Name Basin Dakota
*Property Code 29132	*Property Name NAVAJO 12E		*Well Number 9
*OGRD No. 189071	*Operator Name PURE RESOURCES		*Elevation 6331'

¹⁰ Surface Location

UL or lot no.	Section	Township	Range	Lot Idn	Feet from the	North/South line	Feet from the	East/West line	County
E	12	25-N	11-W		2120	NORTH	700	WEST	SAN JUAN

¹¹ Bottom Hole Location If Different From Surface

UL or lot no.	Section	Township	Range	Lot Idn	Feet from the	North/South line	Feet from the	East/West line	County
*Dedicated Acres 320			*Joint or Infill		*Consolidation Code		*Order No.		

NO ALLOWABLE WILL BE ASSIGNED TO THIS COMPLETION UNTIL ALL INTERESTS HAVE BEEN CONSOLIDATED
OR A NON-STANDARD UNIT HAS BEEN APPROVED BY THE DIVISION

16

SEC. CORNER FD. GLO BC.1932	2120'	S 89-11-15 W 5281.57' (M)	SEC. CORNER FD. GLO BC.1913	17 OPERATOR CERTIFICATION I hereby certify that the information contained herein is true and complete to the best of my knowledge and belief. <u>Mike Phillips</u> Signature Mike Phillips Printed Name San Juan Basin Drilling/ Production Foreman Title Nov. 1st, 2001 Date
700'	803'	LAT. 36° 25.0' N. LONG. 107° 57.7' W.		18 SURVEYOR CERTIFICATION I hereby certify that the well location shown on this plat was plotted from field notes of actual surveys made by me or under my supervision, and that the same is true and correct to the best of my belief. <u>ROY R. RUSH</u> Date of Survey Signature and Seal of Professional Surveyor: 8894 Certificate Number
620'	513'	12		
S 00-00-49 E 5266.76' (M)				
SEC. CORNER FD. GLO BC.1932				

PURE RESOURCES

NAVAJO E12-9

NW/4 SEC. 12, T-25-N, R-11-W, N.M.P.M.

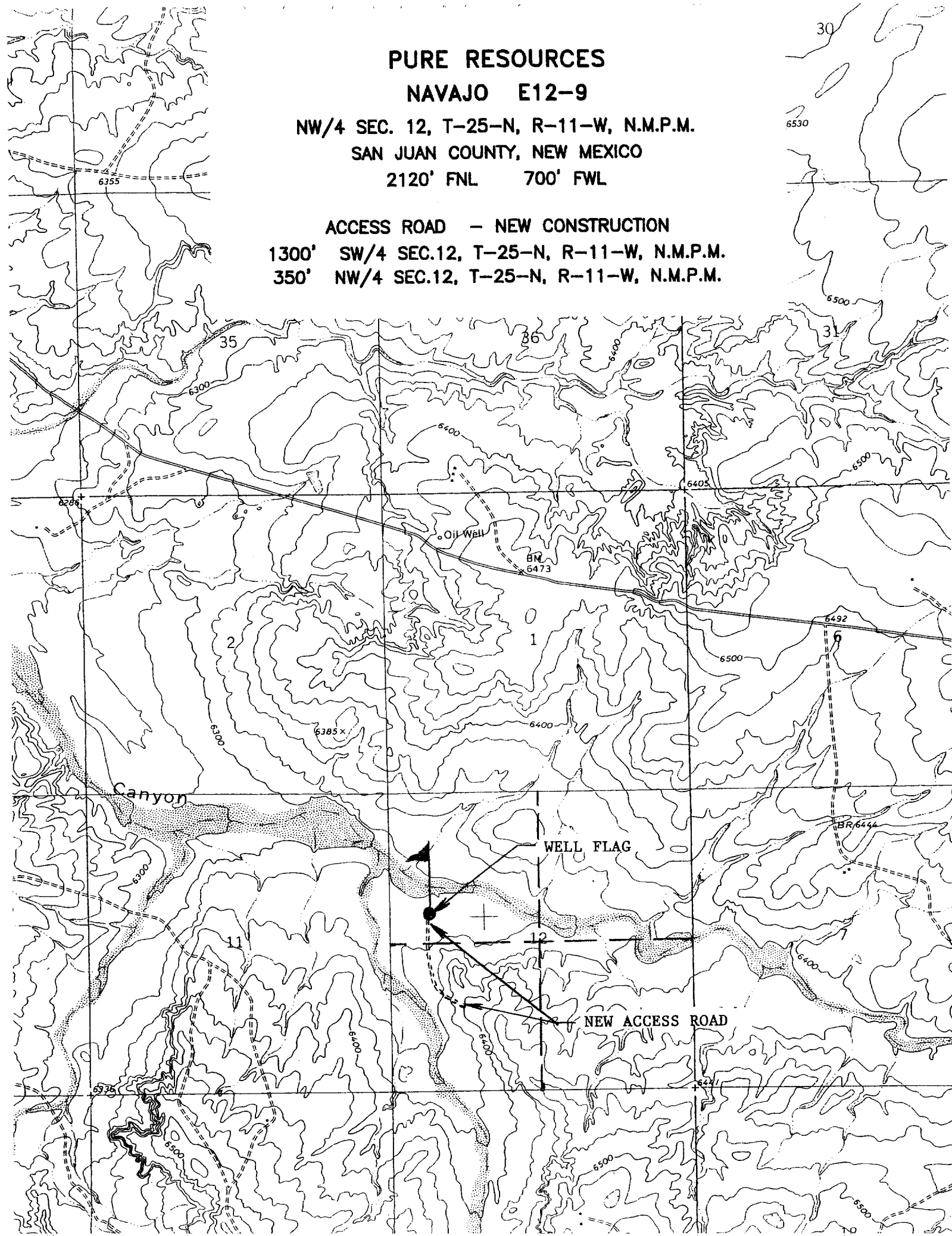
SAN JUAN COUNTY, NEW MEXICO

2120' FNL 700' FWL

ACCESS ROAD - NEW CONSTRUCTION

1300' SW/4 SEC.12, T-25-N, R-11-W, N.M.P.M.

350' NW/4 SEC.12, T-25-N, R-11-W, N.M.P.M.



PURE RESOURCES
NAVAJO 12E-#9
2,120' FNL, 700' FWL, SEC. 12, T-25-N, R-11-W
SAN JUAN CO. NEW MEXICO

8 POINT DRILLING PLAN

1. **ESTIMATED FORMATION TOPS**

<u>FORMATION NAME</u>	<u>DEPTH FROM GL</u>
Pictured Cliffs	1,295'
Cliff House	2,955'
Point Lookout	3,605'
Mancos	4,005'
Gallup	4,805'
X-Marker	5,915'
Dakota	5,935'
Y-Marker	6,080'
Burro Canyon	6,140'

2. **OIL, GAS, WATER, OR OTHER MINERAL BEARING ZONES**

<u>EXPECTED GAS ZONES</u>	<u>DEPTH FROM GL</u>
Dakota	5935-6140'

<u>EXPECTED WATER ZONES</u>	<u>DEPTH FROM GL</u>
Cliff House	2955'

Possible water zones will be protected by 7" intermediate casing and/or 4-1/2" production strings, 7" cemented to surface, and 4-1/2" casing cement tied in to 7".

2. **PRESSURE CONTROL BOP'S AND RELATED EQUIPMENT**

Casing Head: 7" x 11" – 3000 psi W.P.

BOP Stack and Related Equipment: (See Attachment No. 1 &2).

NAVAJO 12E-9

DRILLING PROGRAM – PAGE 2

One double-gate BOP with 4-1/2" and then 3-1/2" pipe and blind rams.

One choke manifold with adjustable and positive chokes.

An accumulator will hydraulically operate the BOP with 1-1/2 times the necessary capacity to close the rams and retain a minimum of 200psi above recharge. The remote unit will be located in the bottom "dog house" or on the ground between the "dog house" and the toolpushers trailer. A rotating head on top of the BOP stack will be utilized when necessary.

Testing Procedure:

The BOP and related equipment will be tested in accordance with the provisions of Onshore Oil and Gas Order No. 2.

BOP's will be operationally tested daily and each test will be logged in the IADC Daily Drilling Report.

Blooie Line:

The blooie line and related equipment will meet all requirements of Onshore Oil and Gas Order No. 2.

4. CASING AND CEMENTINNG PROGRAM

SURFACE CASING (Spud Mud)

<u>Age</u>	<u>Depth</u>	<u>Hole Size</u>	<u>Size</u>	<u>Weight</u>	<u>Grade</u>	<u>Thread</u>
New	0-350'	12-1/4"	9-5/8"	32.3#	H-40	ST&C

INTERMEDIATE CASING (FW Mud)

<u>Age</u>	<u>Depth</u>	<u>Hole Size</u>	<u>Size</u>	<u>Weight</u>	<u>Grade</u>	<u>Thread</u>
New	0-3000'	8-3/4"	7"	20#	K-55	ST&C

PRODUCTION CASING (Air Dusting)

<u>Age</u>	<u>Depth</u>	<u>Hole Size</u>	<u>Size</u>	<u>Weight</u>	<u>Grade</u>	<u>Thread</u>
New	0-TD	6-1/4"	4-1/2"	11.6#	I-80	LT&C

MINIMUM SAFETY FACTORS

Collapse: 1.125

Tension: 1.8

Burst: 1.0

NAVAJO 12E-9
DRILLING PROGRAM – PAGE 3

Cementing Program

1. The 9-5/8" surface casing will be cemented to the surface with 200 sacks of class Type III "B" cement + 2 CACL2 and 1/4# per cello flake. (1.39 cu/ft) 14.5ppg
2. The 7" intermediate casing will be cemented to surface with; 325 sacks of type III (35:65) Poz cement + 8% gel + 2% CACL2, + 6.25#/sack Gilsonite, .25 lbs/sk Cello Flake @ (2.11 CU/FT) 12.1 ppg , Followed by 80 sacks class "B" cement + 2% CACL2 + 1/4 #/sack cello-flake. @ (1.39 CU/FT) 14.5 ppg.
3. The 4-1/2" production casing will be cemented and tied into the intermediate casing with 600 sacks 65/35 Poz Type III cement + 1/4 #/sack CF, 6% gel, 10#/sack CSE + 2% KCL, FL-62 + .2% CD-32, @ (2.06 CU/FT) 12.5 ppg.

Casing hardware for the production string to include guide shoe, float collar, centralized shoe joint and next five joints. Centralizers across producing zones.

Auxiliary Equipment

A kelly cock will be used with handle available. A full opening safety valve will be used when Kelly is out of string. Rotating head while air drilling. Will have vacuum diversion on blooie line.

5. **DRILLING FLUID PROGRAM**

<u>Depth</u>	<u>Type</u>	<u>Weight</u>	<u>Vis</u>	<u>W.L.</u>
0-350'	Spud Mud			N.C.
350-3000'	Fresh Water Gel	8.3-8.6	30-35	N.C
3000'-TD	Air	N.C.	N.C.	N.C.