

NEW MEXICO OIL CONSERVATION COMMISSION
Santa Fe, New Mexico

NOTICE OF INTENTION TO DRILL OR RECOMPLETE

Notice must be given to the District Office of the Oil Conservation Commission and approval obtained before drilling or recompletion begins. If changes in the proposed plan are considered advisable, a copy of this notice showing such changes will be returned to the sender. Submit this notice in **QUINTUPLICATE**. One copy will be returned following approval. See additional instructions in Rules and Regulations of the Commission.

Farmington, New Mexico
(Place)

August 23, 1955
(Date)

OIL CONSERVATION COMMISSION
SANTA FE, NEW MEXICO

Gentlemen:

You are hereby notified that it is our intention to commence the (Drilling) (~~Recompletion~~) of a well to be known as

El Paso Natural Gas Company
(Company or Operator)

Hamilton State

Well No. **6**

G

The well is

located **1850** feet from the **North** line and **1850** feet from the

East

line of Section **32**, T. **26N**, R. **7W**, NMPM.

(GIVE LOCATION FROM SECTION LINE) **So. Blanco P.C.** Pool, **Rio Arriba** County

If State Land the Oil and Gas Lease is No. **B-11240-60**

If patented land the owner is

Address

We propose to drill well with drilling equipment as follows: **Rotary tools to top of Pictured Cliff formation and cable tools thru formation.**

The status of plugging bond is **Statewide**

Drilling Contractor **Co. Tools**

We intend to complete this well in the **Pictured Cliff** formation at an approximate depth of **2975** feet.

CASING PROGRAM

We propose to use the following strings of Casing and to cement them as indicated:

Size of Hole	Size of Casing	Weight per Foot	New or Second Hand	Depth	Sacks Cement
13 3/4"	9 5/8"	25.4#	New	120'	125
8 3/4"	5 1/2"	15.50#	New	2870'	150

If changes in the above plans become advisable we will notify you immediately.

ADDITIONAL INFORMATION (If recompletion give full details of proposed plan of work.) **It is proposed to sand-oil fracture the entire Pictured Cliff formation.**

The NE/4 of Section 32 is dedicated to this well.

(NE/4) B-11240-61 (NENE), E-4083-13 (SENE), B-11240-60(W/2NE).

AUG 26 1955

Approved _____, 19____
Except as follows:

Sincerely yours,

El Paso Natural Gas Company
(Company or Operator)

By **D. L. Edwards**

Position **Petroleum Engineer**

Send Communications regarding well to

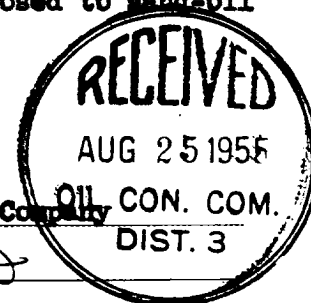
Name **E. J. Coel**

Address **Box 997, Farmington, New Mexico**

OIL CONSERVATION COMMISSION

By _____

Title **Oil and Gas Inspector Dist. #3.**



COMPANY EL PASO NATURAL GAS COMPANY

Well Name & No. HAMILTON STATE NO. 6

Lease No. B-11240-60

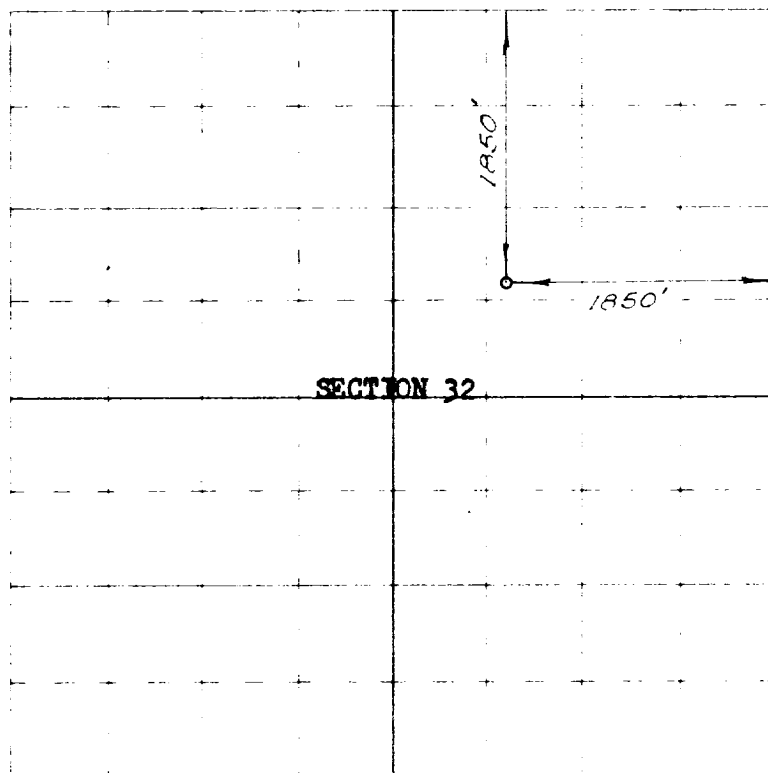
Location 1850 FEET FROM THE NORTH LINE, 1850 FEET FROM THE EAST LINE

Being in THE SW/4 OF THE NE/4

Sec. 32, T. 26N., R. 7W., N.M.P.M.,

RIO ARriba COUNTY, NEW MEXICO

Ground Elevation 6971[±]₄ NATURAL GROUND



Scale -- 4 inches equals 1 mile

Surveyed MAY 22, 1955

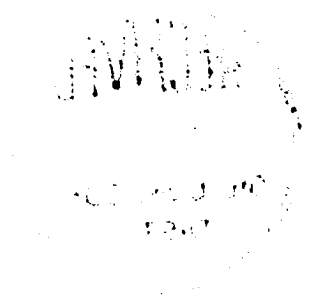
This is to certify that the above plat was prepared from field notes of actual surveys made by me or under my supervision and that the same are true and correct to the best of my knowledge and belief.

Book

[Signature]
Registered Professional
Engineer and Land Surveyor.

Parlington, New Mexico

160 ACRES, NE/4 SECTION (PLAT)



OIL CONSERVATION COMMISSION		
AZTEC DISTRICT OFFICE		
No. Copies Received		6
DISTRIBUTION		
	NO. FURNISHED	
Operator	1	
Santa Fe	1	
Proration Office		
State Land Office	1	
U. S. G. S.	2	
Transporter		
File	1	✓