

UNITED STATES  
DEPARTMENT OF THE INTERIOR  
BUREAU OF LAND MANAGEMENT

FORM APPROVED  
Budget Bureau No. 1004-0135  
Expires: March 31, 1993

**SUNDRY NOTICES AND REPORTS ON WELLS**

Do not use this form for proposals to drill or to deepen or reentry to a different reservoir.  
Use "APPLICATION FOR PERMIT—" for such proposals

**SUBMIT IN TRIPLICATE**

1. Type of Well

☐ Oil Well ☒ Gas Well ☐ Other

2. Name of Operator

Amoco Production Company Attn: John Hampton

3. Address and Telephone No.

P.O. Box 800, Denver, Colorado 80201

4. Location of Well (Footage, Sec., T., R., M., or Survey Description)

860' FNL, 1010' FWL, Sec. 18, T26N-R7W

5. Lease Designation and Serial No.

NM-067988

6. If Indian, Allottee or Tribe Name

7. If Unit or CA, Agreement Designation

8. Well Name and No.

Foster #2

9. API Well No.

30 045 06525

10. Field and Pool, or Exploratory Area

Basin Dakota

11. County or Parish, State

San Juan, New Mexico

12. CHECK APPROPRIATE BOX(s) TO INDICATE NATURE OF NOTICE, REPORT, OR OTHER DATA

TYPE OF SUBMISSION

- ☒ Notice of Intent  
☐ Subsequent Report  
☐ Final Abandonment Notice

TYPE OF ACTION

- ☒ Abandonment  
☐ Recompletion  
☐ Plugging Back  
☐ Casing Repair  
☐ Altering Casing  
☐ Other \_\_\_\_\_

- ☐ Change of Plans  
☐ New Construction  
☐ Non-Routine Fracturing  
☐ Water Shut-Off  
☐ Conversion to Injection  
☐ Dispose Water

(Note: Report results of multiple completion on Well Completion or Recompletion Report and Log form.)

13. Describe Proposed or Completed Operations (Clearly state all pertinent details, and give pertinent dates, including estimated date of starting any proposed work. If well is directionally drilled, give subsurface locations and measured and true vertical depths for all markers and zones pertinent to this work.)\*

Amoco Production Company intends to Plug and Abandon the subject well.  
See attached for procedure:

RECEIVED  
JUN - 8 1992  
OIL CON. DIV.  
DIST. 3

SEE ATTACHED FOR  
CONDITIONS OF APPROVAL

If you have any questions please call Julie Acevedo at 303-830-6003.

14. I hereby certify that the foregoing is true and correct

Signed John Hampton/gaa

Title Sr. Staff Admin. Supv.

(This space for Federal or State office use)

Approved by \_\_\_\_\_  
Conditions of approval, if any: \_\_\_\_\_

Title \_\_\_\_\_

APPROVED  
AS AMENDED

Date 5/19/92

JUN 04 1992

AREA MANAGER

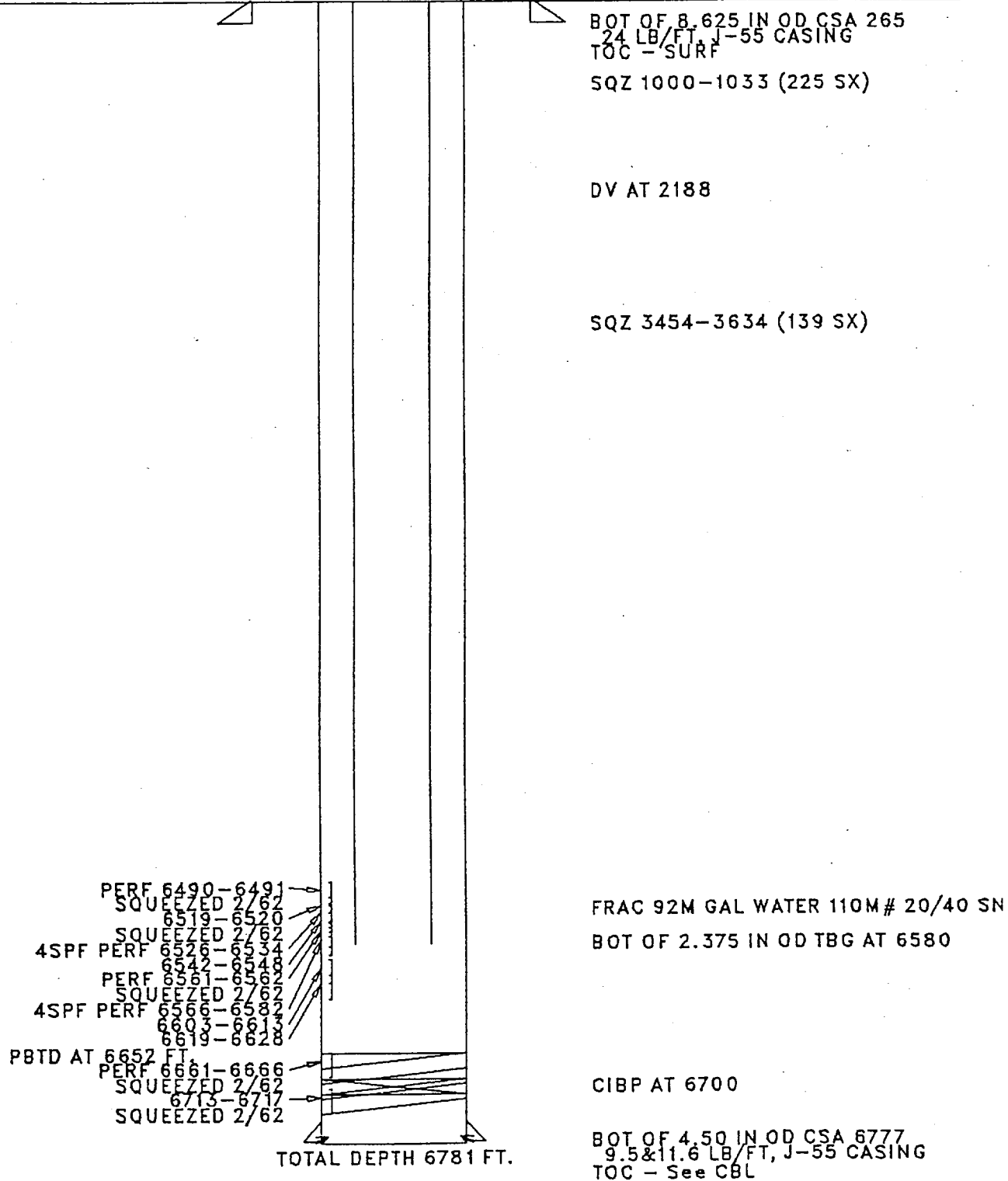
PXA Procedures  
Foster #2

1. Check location for anchors. Install if necessary. Test anchors.
2. MIRUSU. NDWH. NUBOPE.
3. Run CBL. Determine tops of cement.
4. POOH with 2 3/8" tubing. Inspect tubing for holes.
5. RIH with 60' tailpipe, packer, and cement retainer. Set retainer at 5450'.
6. Squeeze perforation @6534 to 6619 with 57sx of class B cement. Pull up hole and spot 4 sx cement on top of retainer. WOC. Tag top of cement with tailpipe. TOH and lay down stinger. TIH with 60' PVC pipe thread with 8 round thread with mule shoe.
7. Load backside and pressure test to 700#. If casing leak found isolate leak and contact Denver for further instructions.
8. Load hole with 9lbs mud/POZ water to 4700'.
9. Pull up hole and set packer at 4600'. Perf thru tubing tailpipe and casing with 1' 4jspf at 4650'. Trip up hole above perfs 200' from bottom of tailpipe. Squeeze perfs with min 50sx of class B cement. Displace tubing and 150' of casing. WOC. Pressure test to 1000#. Tag TOC with tailpipe.
10. Pull up hole to 3660 and set packer. Perf thru tubing tailpipe and casing with 1' 4jspf at 3700. Pull up hole set tailpipe 200' above the Charcra @ 3450'. Pump min 50sx of class b cement displacing 150' of casing below bottom of tailpipe.
11. Pull up hole to 2930'. Set packer at 2930'. Perf through casing and tubing tailpipe 1' with 4jspf @2950'. Trip up hole above perfs 200' from bottom of tailpipe. Squeeze perfs with min 50 sx of class B cement. Displace tubing and 150' of casing. WOC. Pressure test to 1000#. Tag TOC with tailpipe.
12. Pull up hole to 2300' and load hole with 9lbs mud/POZ water.
13. Set packer at 2205'. Perf thru tubing tailpipe and casing with 1' 4jspf @2250'. Trip up hole above perfs 200' from bottom of tailpipe. Squeeze perfs with min 50sx of class B cement. Displace tubing and 150' of casing. WOC. Pressure test to 1000#. Tag TOC with tailpipe.
14. Pull up hole to 1875 and load hole with 9lbs mud/POZ water to

1895. Set packer at 1875. Perf through casing and tubing tailpipe 1' with 4jspf @1883'. Trip up hole above perfs 200' from bottom of tailpipe. Squeeze perfs with min 50 sx of class B cement. Displace tubing and 150' of casing. WOC. Pressure test to 100#. Tag TOC with tailpipe.
15. Pull up hole to 1300' and load hole with 9lbs mud/POZ water to 1350'. Set packer at 1300'. Perf thru tubing tailpipe and casing with 1' 4jspf @1330'. Trip up hole above perfs 200' from bottom of tailpipe. Squeeze perfs with min 50 sx of class B cement. Displace tubing and 150' of casing. WOC. Pressure test to 1000#. Tag TOC with tailpipe.
16. Per TOC by CBL set packer. Perf thru tubing tailpipe and casing with 1' 4jspf. Trip up hole 100' from bottom of tailpipe. Calculate cement volume plus 100% excess and circulate thru squeeze holes to surface. Displace tubing and 150' of casing.
17. TOH with packer and tailpipe. TIH with tubing and spot a cement plug from new PBTD' to surface. Calculate cement volume plus 50% excess.
18. NDBOP. Cut off casing and wellhead. Install PXA marker according to BLM and state requirements.
19. Turn over to John Schwartz for reclamation.
20. Rehabilitate location according to BLM or State requirements.

Note: Use Class B cement.

FOSTER 002  
Location - 18D-26N-7W  
Basin Dakota  
Orig. Completion - 2/62  
Last File Update - 1/90



FILENAME:  
5WG10563

SQZ CSG LEAKS 4/84 @ 1000' & 3274'-3454'  
TUBING REPAIR 7/83  
ACIDIZE DK 1/84

IN REPLY REFER TO  
(019)

UNITED STATES DEPARTMENT OF THE INTERIOR

BUREAU OF LAND MANAGEMENT  
FARMINGTON RESOURCE AREA  
1235 LA PLATA HIGHWAY  
FARMINGTON, NEW MEXICO 87401

Attachment to Notice of

Re: Permanent Abandonment

Intention to Abandon

Well: #2 Foster

CONDITIONS OF APPROVAL

1. Plugging operations authorized are subject to the attached "General Requirements for Permanent Abandonment of Wells on Federal Leases."

2. Mark Kelly with the Farmington Office is to be notified at least 24 hours before the plugging operations commence (505) 326-6201.

3. Blowout prevention equipment is required.

4. The following modifications to your plugging program are to be made (when applicable): *The following plugs are required inside and outside of the casing as a minimum. Results of the CBL will determine if perforating is necessary.*

- 1.) Plug from Dakota Perts. to 5434' (Top of Gallup - 5484')
- 2.) Plug from 3730' to 3630' (Top of Mesaville - 3680')
- 3.) Plug from 3042' to 2942' (Top of Chaco - 2992')
- 4.) Plug from 2178' to 2078' (Top of PC - 2128')
- 5.) Plug from 1985' to 1885' (Top of Fruitland - 1935')
- 6.) Plug from 1520' to 1305' (Oso Alamo 1355' - 1470')
- 7.) Plug from 315' to Surface.

Office Hours: 7:45 a.m. to 4:30 p.m.

*Note! Plugs inside and outside of casing requires 100% excess cement. Plugs just on the inside of the casing requires 50% excess cement.*