

NEW MEXICO OIL CONSERVATION COMMISSION
Santa Fe, New Mexico

NOTICE OF INTENTION TO DRILL OR RECOMPLETE

Notice must be given to the District Office of the Oil Conservation Commission and approval obtained before drilling or recompletion begins. If changes in the proposed plan are considered advisable, a copy of this notice showing such changes will be returned to the sender. Submit this notice in QUINTUPLICATE. One copy will be returned following approval. See additional instructions in Rules and Regulations of the Commission.

Farmington, New Mexico
(Place)

4-29-54
(Date)

OIL CONSERVATION COMMISSION
SANTA FE, NEW MEXICO

Gentlemen:

You are hereby notified that it is our intention to commence the (Drilling) (Recompletion) of a well to be known as

Ralph A. Johnston (Johnston Oil and Gas Company)
(Company or Operator)

Rincon Unit
(Lease)

Well No. **31**

in **P.**
(Unit)

The well is

located **660** feet from the **South** line and **660** feet from the

East

line of Section **36**, T. **27N**, R. **7W**, NMPM.

(GIVE LOCATION FROM SECTION LINE) **S. Blanco-Tecito Ext.** Pool, **Rio Arriba** County

If State Land the Oil and Gas Lease is No. **E-290-6**

If patented land the owner is.....

Address.....

We propose to drill well with drilling equipment as follows:

Rotary 0 to 6750 feet

The status of plugging bond is **\$10,000 Statewide on file**

Drilling Contractor **Corbett**

We intend to complete this well in the **Tecito** formation at an approximate depth of **6750'** feet.

CASING PROGRAM

We propose to use the following strings of Casing and to cement them as indicated:

Size of Hole	Size of Casing	Weight per Foot	New or Second Hand	Depth	Sacks Cement
13 3/4"	10 3/4"	32.75#	New	450'	250
8 3/4"	7"	23#	New	6700'	250

If changes in the above plans become advisable we will notify you immediately.

ADDITIONAL INFORMATION (If recompletion give full details of proposed plan of work.)

Approved.....**4-29-54**, 19**54**
Except as follows:

Sincerely yours,

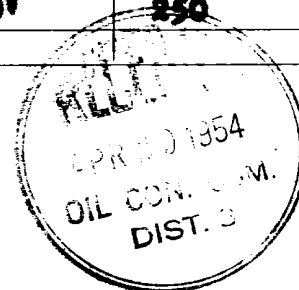
Ralph A. Johnston
(Company or Operator)

By **James W. Copeland**
Position **Superintendent**
Send Communications regarding well to

Name **James W. Copeland**
Address **Box 813**
Farmington, New Mexico

OIL CONSERVATION COMMISSION

By **James W. Copeland**
Title **Oil and Gas Inspector Dist. #3**



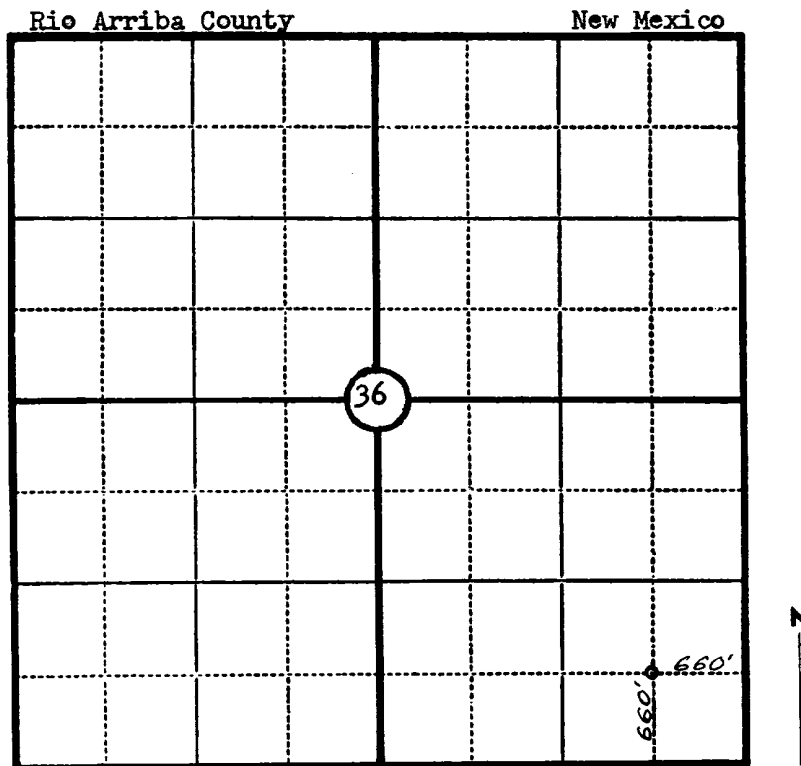
Company.....RALPH A. JOHNSTON.....

Lease.....Well No.....

Sec. 36, T. 27 N, R. 7 W., N.M.P.M.

Location 660' from the South line and 660' from the East line.

Elevation 6566 Ungraded ground.



Scale—4 inches equal 1 mile.

This is to certify that the above plat was prepared from field notes of actual surveys made by me or under my supervision and that the same are true and correct to the best of my knowledge and belief.

Charles J. Finklea

Seal:

Registered Professional
Engineer and Land Surveyor.

Charles J. Finklea
N. Mex. Reg. No. 1302

Surveyed 21 April, 1954

WELL HISTORY
JOHNSTON OIL & GAS CO.
RINCON UNIT WELL #31

Johnston Oil & Gas Company originally spudded this well as a Tocito prospect May 2, 1954. Drilled and cored with rotary tools through the Tocito. Eight and three quarter hole to 6716 and six and one quarter hole from 6716 to 6757. Ran 7 inch, 23# casing to 6716 and cemented with 250 sacks. Used Duvell Pet-refrac on Tocito, 8,000 gallons of crude and 6500# of sand. Swabbed to complete. Released Rotary tools. Flowed well until August 4, 1954. Production was 3 to 8 barrels per day. Decided Tocito non-commercial and to deepen to Morrison. Re-spudded August 4, 1954. Cored and drilled with rotary tools a 6 1/4 inch hole to 7546. Drill Stem Tested with packer at 7513. Results as follows:

Packer 7513	TD 7546
Gas to surface	5 minutes
Oil & Oil emulsion mud to surface	1 hour
Water to surface	1 1/2 hrs.
Est. 70% water, 25% oil, 5% oil emulsion	
Open 4 hrs. End of test 10 bbls. fluid per hr.	
Shut in 1 hr. and circulated out.	

Ran 920' of 5 inch flush joint casing as a liner for the open hole. Hung same with Brown hanger and squeeze packer combination. Cemented liner with 65 sks. Drilled out and perforated liner 7520 to 7536. Ran BME with hook wall packer set in 7". Recovered 6500' fresh water @ 2935' - 2995' with 150 sacks, 7546 back to 7442. Plugged 7" with 40 sacks, 3247 back to 2930. Drilled plug out to 3100, set down on plug with 15,000#, held alright. Released rotary rig 9-20-54.

On October 11, 1954 moved over well with Company tools. Plug back depth of 3100' was checked. Cement was hard and in place. Perforated 5 1/2" casing three holes @ 3050' and two holes @ 2450'. Set Baker retainer @ 3012' circulated through lower perforations and back into casing through upper perforations. Squeezed with 100 sacks cement (50 sak. reg and 50 50 sks. Pozmix). Top of cement by temperature survey at 2412'.

Set Baker Model K cement retainer at 2382'. Squeezed perforations at 2450' with 100 sacks cement. Maximum pressure 1000 psi. Drilled out retainer after 24 hours.

Perforated with Lane Wells from 2935' - 2995' with four A-2 bullets per ft. and one cone shot per ft. Ran water test for 2 hours. No water or gas. Set Baker retainer at 2875' treated with sand-oil 2935' - 2995' with 13,700 gallons oil and 6800# sand. Breakdown pressure 2200 psi, maximum pressure 2200. IN 5.5 bbls./min. Drilled out retainer and cleaned out to 3012', well tested 1,948 MCF/D after 7 days shut-in.