

NEW MEXICO OIL CONSERVATION COMMISSION
Santa Fe, New Mexico

NOTICE OF INTENTION TO DRILL OR RECOMPLETE

Notice must be given to the District Office of the Oil Conservation Commission and approval obtained before drilling or recompletion begins. If changes in the proposed plan are considered advisable, a copy of this notice showing such changes will be returned to the sender. Submit this notice in **QUINTUPPLICATE**. One copy will be returned following approval. See additional instructions in Rules and Regulations of the Commission.

Wichita Falls, Texas

(Place)

June 21, 1955

(Date)

OIL CONSERVATION COMMISSION
 SANTA FE, NEW MEXICO

Gentlemen:

You are hereby notified that it is our intention to commence the (Drilling) (Recompletion) of a well to be known as

FRANCIS L. HARVEY

(Company or Operator)

STATE _____, Well No. **3**, in **A** (Unit) The well is located **990** feet from the **north** line and **990** feet from the **east** line of Section **32**, T. **27 N**, R. **7 W**, NMPM. (GIVE LOCATION FROM SECTION LINE) **South Blanco FC** Pool, **Rio Arriba** County

If State Land the Oil and Gas Lease is No. **E-2828**

If patented land the owner is _____

Address _____

We propose to drill well with drilling equipment as follows: **Rotary tools to top of Pictured Cliffs; cable tools to drill in**

The status of plugging bond is **On file**

Drilling Contractor **Huerfanite Drilling Co., Inc.**

We intend to complete this well in the **Pictured Cliffs** formation at an approximate depth of **3000** feet.

CASING PROGRAM

We propose to use the following strings of Casing and to cement them as indicated:

Size of Hole	Size of Casing	Weight per Foot	New or Second Hand	Depth	Sacks Cement
12-1/4"	8-5/8"	24#	New	90	80
7-7/8"	5-1/2"	14#	New	2900	100

If changes in the above plans become advisable we will notify you immediately.

ADDITIONAL INFORMATION (If recompletion give full details of proposed plan of work.)

If commercial production is indicated, the producing section will be shot with nitroglycerin and/or sand-oil treated.

Approved _____, 19_____
 Except as follows:

Sincerely yours,

FRANCIS L. HARVEY

(Company or Operator)

By _____

Position _____

Send Communications regarding well to

Name _____

Address _____

Francis L. Harvey

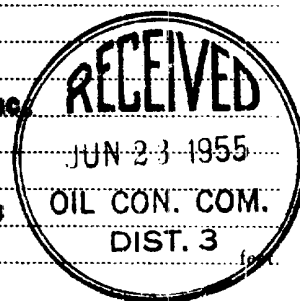
Box 990

Wichita Falls, Texas

OIL CONSERVATION COMMISSION

By **Original Signed Emery C. Arnold**

Title **Oil and Gas Inspector Dist. #3**



Company Francis Harvey

Lease State Well No. FS

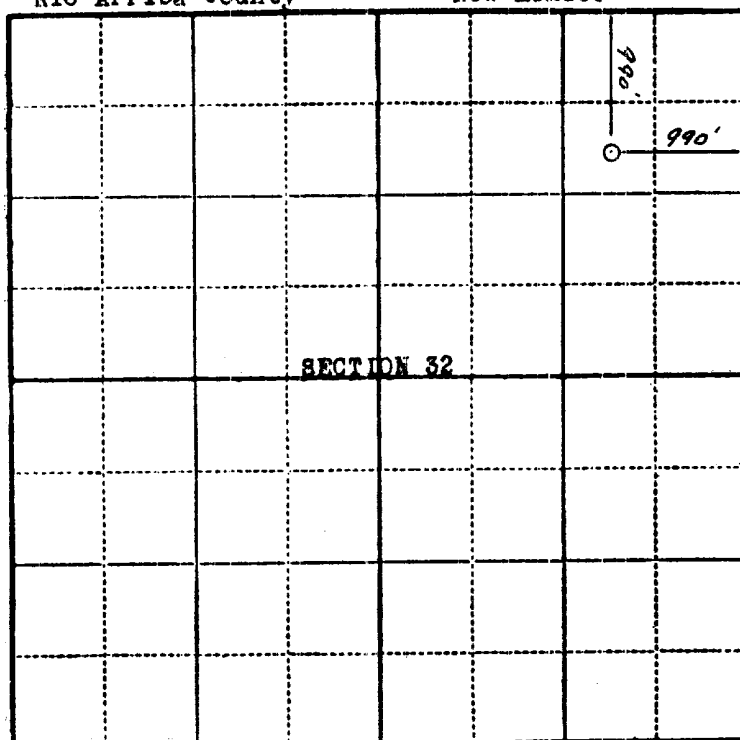
Sec. 32 T. 27 N R. 7 W N.M.P.M.

Location 990 feet from north line; 990 feet
from east line.

Elevation: 6641 GL

Rio Arriba County

New Mexico



Scale—4 inches equal 1 mile.

This is to certify that the above plat was prepared from field notes of actual surveys made by me or under my supervision and that the same are true and correct to the best of my knowledge and belief.

Stephen H. Kinney

STEPHEN H. KINNEY
Registered Professional
Engineer and Land Surveyor

Surveyed June 17 19 55

Seal:

OIL CONSERVATION COMMISSION		
AZTEC DISTRICT OFFICE		
No. Copies Received <u>2</u>		
DISTRIBUTION		
	NO. COPIES FURNISHED	
Operator	<u>1</u>	
Santa Fe	<u>1</u>	
Proration Office	<u>1</u>	
State Land Office	<u>1</u>	
U. S. G. S.	<u>1</u>	
Transporter	<u>1</u>	
File	<u>1</u>	<input checked="" type="checkbox"/>