

OIL CONSERVATION COMMISSION
1000 Rio Brazos Rd.
Aztec, New Mexico

OIL CONSERVATION COMMISSION
BOX 871
SANTA FE, NEW MEXICO

DATE 5-22-60

RE: Proposed NSP _____

Proposed NSL _____

Proposed NFO _____

Proposed DC ✓

Gentlemen:

I have examined the application dated 5-12-60
for the Operator O. Lease and Well No. 135 B-29-27N-6W
Operator O. Lease and Well No. 135 B-29-27N-6W

and my recommendations are as follows:

approve

Yours very truly,

Emily R. [Signature]
OIL CONSERVATION COMMISSION

7-3-58

- * Should waivers from all offset operators not accompany an application for administrative approval, the New Mexico Oil Conservation Commission will hold the application for a period of twenty (20) days from date of receipt by the Commission's Santa Fe office. If, after said twenty-day period, no protest nor request for hearing is received by the Santa Fe office, the application will then be processed.
- NOTE:** If the proposed dual completion will result in an unorthodox well location and/or a non-standard proration unit in either or both of the producing zones, then separate application for approval of the same should be filed simultaneously with this application.

STATE OF NEW MEXICO

COUNTY OF SAN JUAN

)
)
)

I, J. J. Tillerson, being first duly sworn upon my oath depose and say as follows:

I am an employee of El Paso Natural Gas Company, and that on February 14, 1960, I was called to the location of the El Paso Natural Gas Company Rincon Unit No. 135 (MD) Well located in the NWNE/4 of Section 29, Township 27 North, Range 1 West, N.M.P.M., for advisory service in connection with the installation of a production packer. In my presence, a Baker Model D Production Packer was installed in this well at 6919 feet in accordance with the usual practices and customs of the industry.

J. J. Tillerson

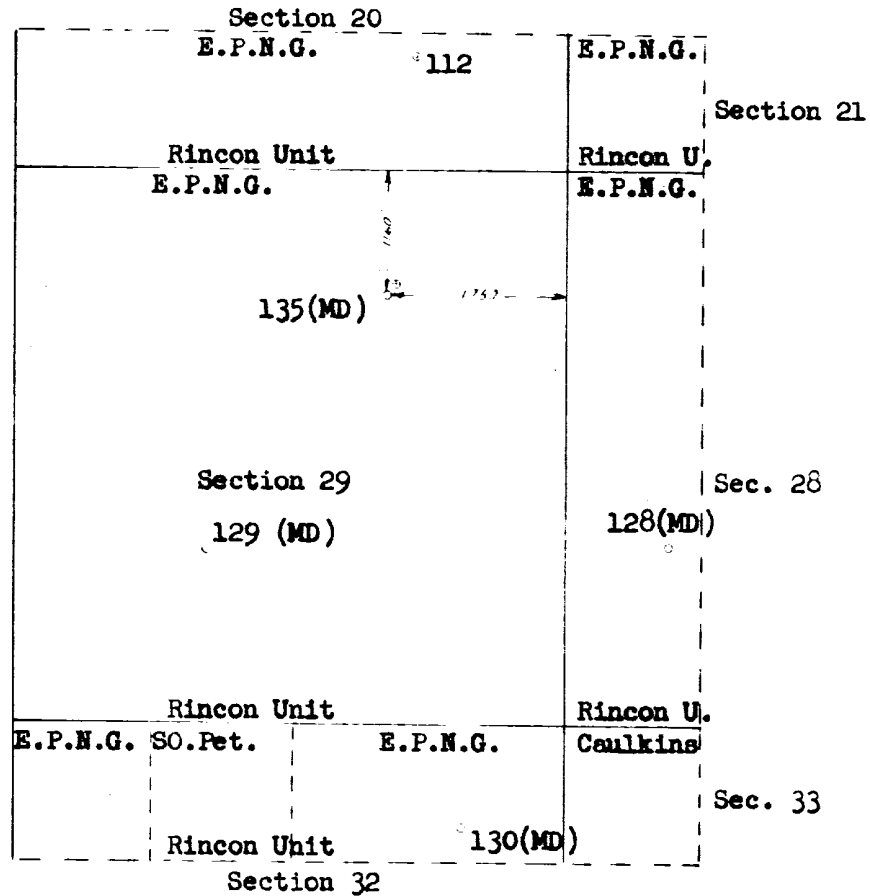
Subscribed and sworn to before me this 13th day of May, 1960.

Lawrence B. Hall
Notary Public in and for San Juan County,
New Mexico

My Commission Expires 6-21-61
My commission expires

PLAT SHOWING LOCATION OF DUALY COMPLETED
El Paso Natural Gas Co. Rincon Unit No. 135 (MD)
And Offset Acreage

T-27-N
R-6-W



EL PASO NATURAL GAS COMPANY
EL PASO, TEXAS

SCALE

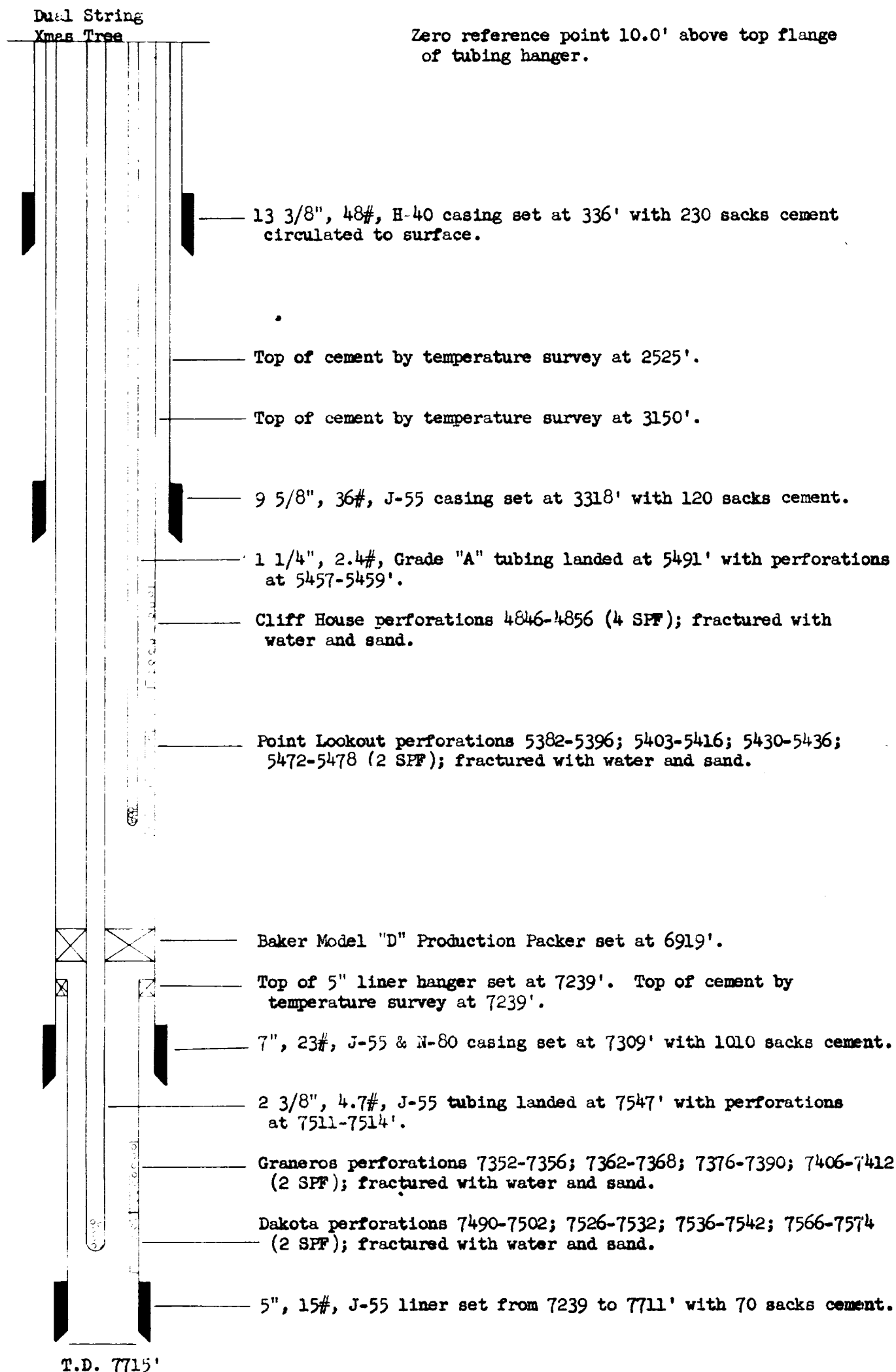
DATE

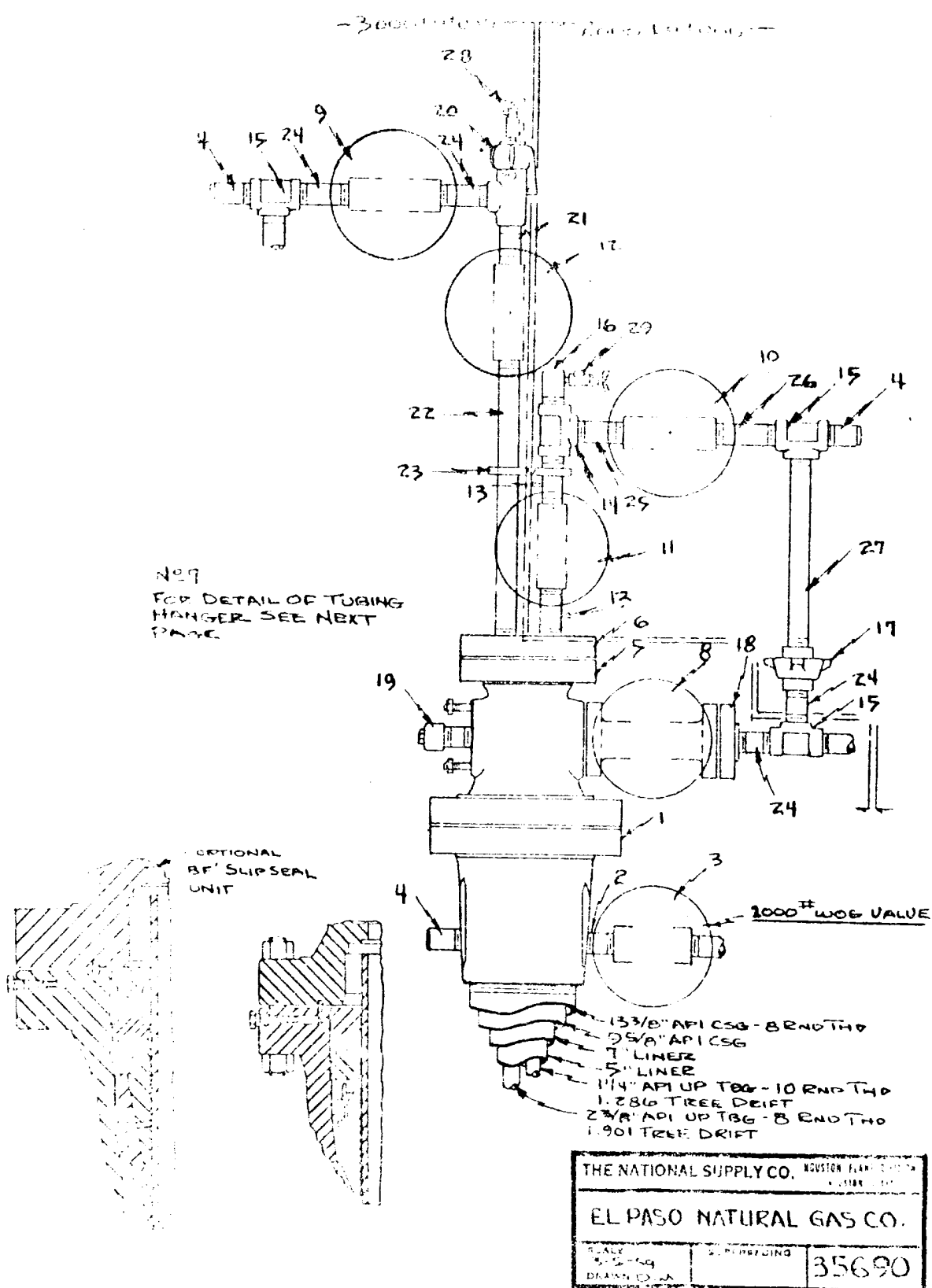
No.

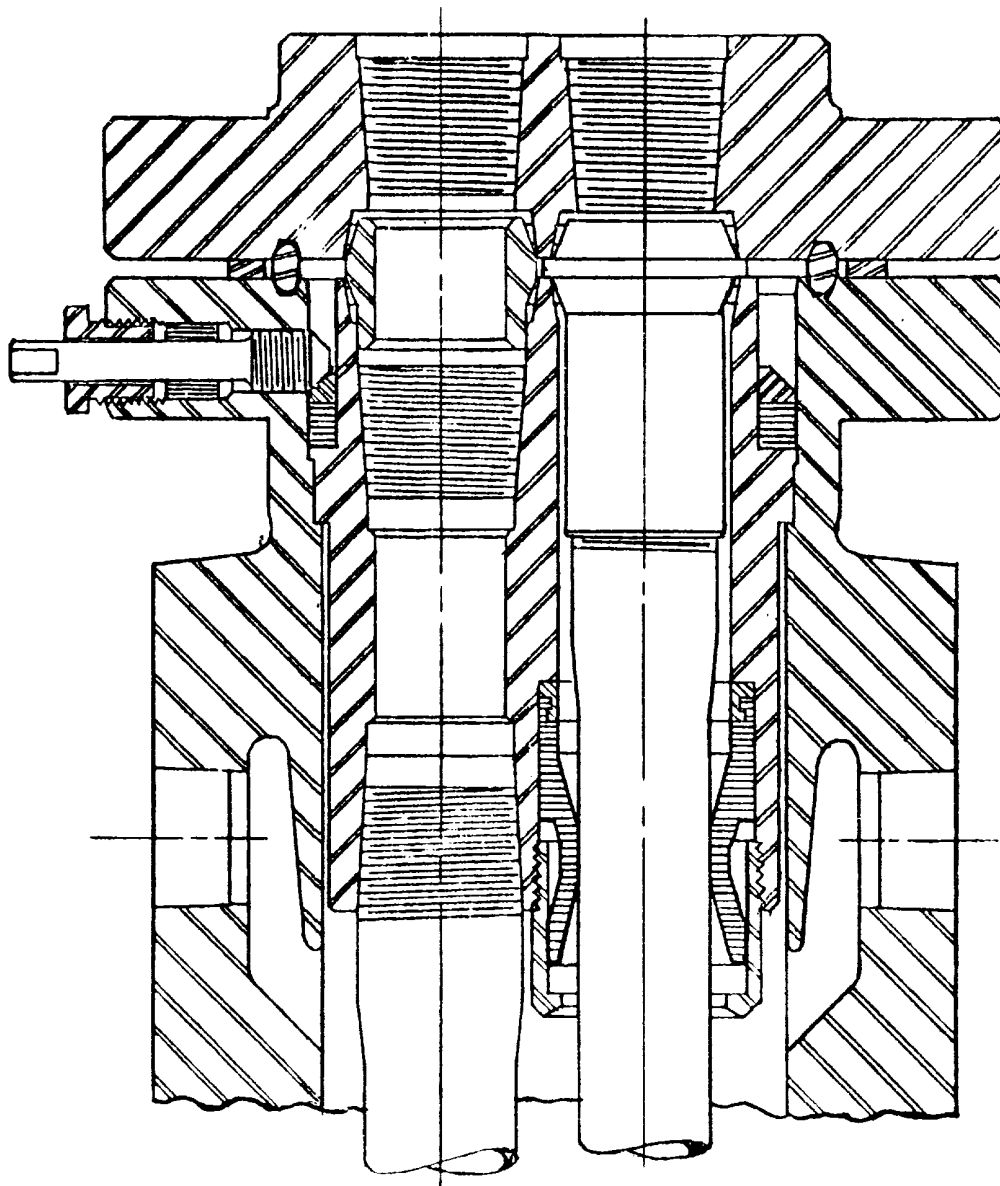
DRAWN BY

CHECKED BY

SCHEMATIC DIAGRAM OF DUAL COMPLETION
El Paso Natural Gas Co. Rincon Unit No. 135 (MD)
NE/4 Section 29, T-27-N, R-6-W







EL PASO NATURAL GAS COMPANY
OPEN FLOW TEST DATA

DUAL COMPLETION

DATE April 5, 1960

Operator El Paso Natural Gas		Lease Rincon Unit No. 135 (D)	
Location 1160N, 1750E; 29-27-6		County Rio Arriba	State New Mexico
Formation Dakota		Pool Undesignated	
Casing: Diameter 5	Set At: Feet 7711	Tubing: Diameter 2	Set At: Feet 7537
Pay Zone: From 7352	To 7574	Total Depth: 7715 c/o 7678	Shut In Re SI 3/28/60
Stimulation Method Sand Water Frac.		Flow Through Casing	Flow Through Tubing X

Choke Size, Inches .75		Choke Constant: C 12.365		7" at 7309, 5" liner 7239-7711	
Shut-In Pressure, Casing, (MV) 1026	PSIG	12 - PSIA 1038	Days Shut-In 8	Shut-In Pressure, Tubing 2505 (D)	PSIG
Flowing Pressure: P 486	PSIG	12 - PSIA 498	Working Pressure: Pw Calc. 1098	PSIG	12 - PSIA 1110
Temperature: T = 74 °F	F _t = .9868	.75	F _{pv} (From Tables) 1.049	Gravity .665	F _g = .9498

Initial SIPT (MV) = 1026 psig
Final SIPC (MV) = 1038 psig

Baker model "D" packer at 6919

CHOKE VOLUME: $Q = C \times P_1 \times F_t \times F_g \times F_{pv}$

$$Q = 12.365 \times 498 \times .9868 \times .9498 \times 1.049 = 6054 \text{ MCF/D}$$

$$\text{OPEN FLOW} - A_{of} = Q \left(\frac{P_c^2}{P_c^2 - P_w^2} \right)^n$$

$$A_{of} = \left(\frac{6,335,289}{5,103,189} \right)^n \quad 1.2414^{.75} \times 6054 = 1.1760 \times 6054$$

$$A_{of} = 7120 \text{ MCF/D}$$

TESTED BY C. R. Wagner

WITNESSED BY _____

Checked By T. B. Grant

Lewis D. Galloway
L. D. Galloway

EL PASO NATURAL GAS COMPANY
OPEN FLOW TEST DATA

DUAL COMPLETION

DATE April 13, 1960

Operator El Paso Natural Gas Company		Lease Rincon Unit No. 135 (M)	
Location 1160N, 1750E; 29-27-6		County Rio Arriba	State New Mexico
Formation Mesa Verde		Pool Blanco	
Casing: Diameter 7	Set At: Feet 7309	Tubing: Diameter 1-1/4	Set At: Feet 5481
Pay Zone: From 4846	To 5478	Total Depth: 7715 e/o 7678	Shut In 2/15/60
Stimulation Method Sand Water Frac.		Flow Through Casing X	Flow Through Tubing

Choke Size, Inches .75		Choke Constant: C 12.365	
Shut-In Pressure, Casing, PSIG 1024 (MV)	+ 12 = PSIA 1036	Days Shut-In 58	Shut-In Pressure, Tubing, PSIG 1026 (MV)
Flowing Pressure: P, PSIG 118	+ 12 = PSIA 130		Working Pressure: P _w , PSIG 133
Temperature: T, °F 59	F _t 1.0010 .75		Gravity .708
		F _{pv} (From Tables) 1.016	F _g = .9225

Initial SIPT (Dk) = 2484 psig

Baker Model "D" Packer at 6919

Final SIPT (Dk) = 2494 psig

CHOKE VOLUME $Q = C \times P_c \times F_t \times F_g \times F_{pv}$

$$Q = 12.365 \times 130 \times 1.0010 \times .9225 \times 1.016 = 1508$$

MCF/D

$$\text{OPEN FLOW } A_{of} = Q \left(\frac{P_c^2}{P_c^2 - P_w^2} \right)^n$$

$$A_{of} = \left(\frac{1077444}{1056419} \right)^n \quad 1.0199^{.75} \times 1508 = 1.0149 \times 1508$$

$$A_{of} = 1530 \text{ MCF/D}$$

TESTED BY S. V. Roberts

WITNESSED BY _____

Lewis D. Galloway
L. D. Galloway