

NEW MEXICO OIL CONSERVATION COMMISSION
WELL LOCATION AND ACREAGE DEDICATION PLAT

Form C-102
Supersedes C-128
Effective 1-1-65

All distances must be from the outer boundaries of the Section.

(Dakota is not NP)

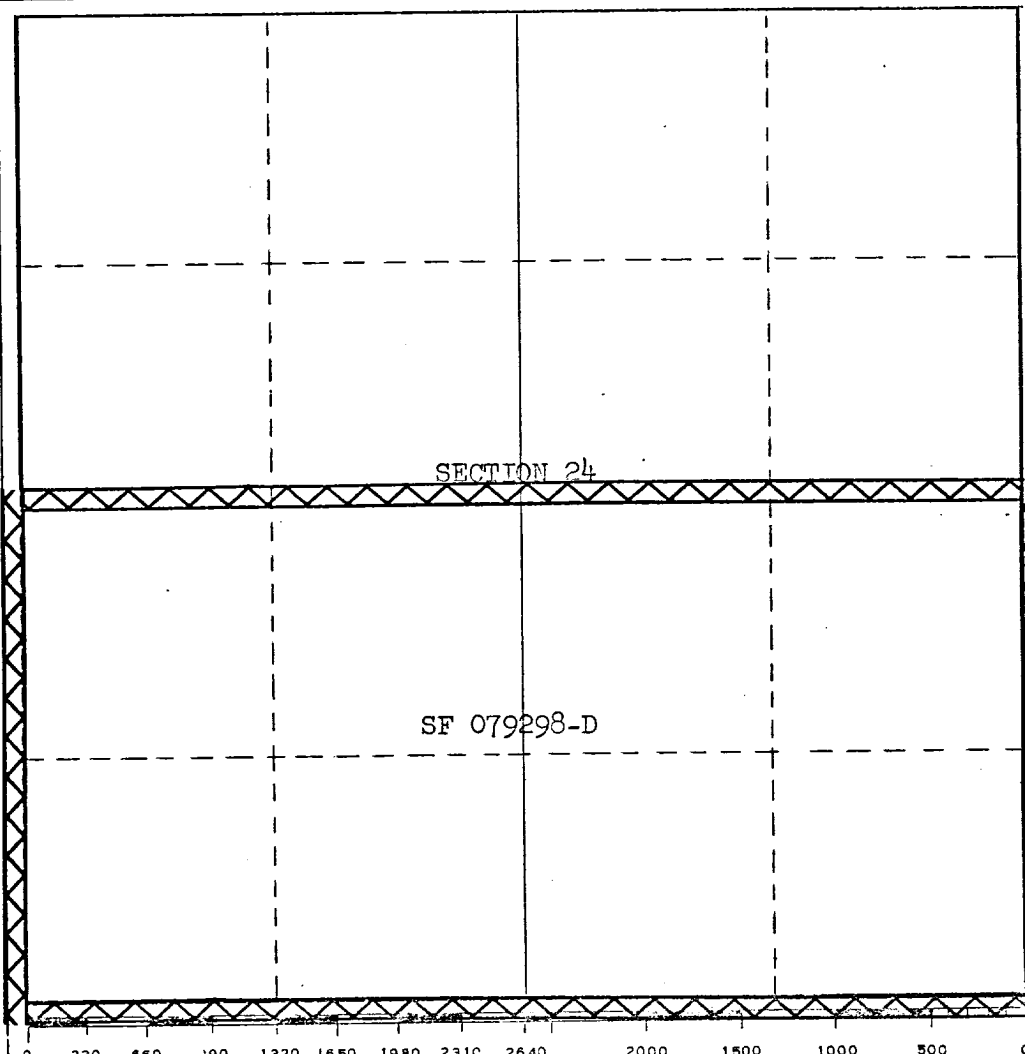
Operator EL PASO NATURAL GAS COMPANY		Lease RINCON UNIT ^{NP} (SF 079298-D)		Well No. 137 (MD)
Unit Letter K	Section 24	Township 27-N	Range 7-W	County RIO ARRIBA
Actual Footage Location of Well: 1,500 feet from the S line and 1,800 feet from the W line				
Ground Level Elev. 6760 DF	Producing Formation MESAVERDE & DAKOTA	Pool BLANCO MV & BASIN DAKOTA	Dedicated Acreage: 337.44 Acres	

- Outline the acreage dedicated to the subject well by colored pencil or hachure marks on the plat below.
- If more than one lease is dedicated to the well, outline each and identify the ownership thereof (both as to working interest and royalty).
- If more than one lease of different ownership is dedicated to the well, have the interests of all owners been consolidated by communitization, unitization, force-pooling, etc?

Yes No If answer is "yes," type of consolidation Unitization

If answer is "no," list the owners and tract descriptions which have actually been consolidated. (Use reverse side of this form if necessary.)

No allowable will be assigned to the well until all interests have been consolidated (by communitization, unitization, forced-pooling, or otherwise) or until a non-standard unit, eliminating such interests, has been approved by the Commission. THIS PLAT REISSUED TO SHOW CORRECTED ACREAGE AS PER LETTER N.M.O.C. DATED 2-14-68.



CERTIFICATION

I hereby certify that the information contained herein is true and complete to the best of my knowledge and belief.

Carl E. Matthews
Name
Petroleum Engineer
Position
El Paso Natural Gas Co.
Company
March 11, 1968
Date

I hereby certify that the well location shown on this plat was plotted from field notes of actual surveys made by me or under my supervision, and that the same is true and correct to the best of my knowledge and belief.

Date Surveyed March 11, 1968
OIL CON. COM.
REGISTERED PROFESSIONAL ENGINEER
and/or LAND SURVEYOR DIST. 3

Certificate No.