

UNITED STATES
DEPARTMENT OF THE INTERIOR
BUREAU OF LAND MANAGEMENT

SUNDRY NOTICES AND REPORTS ON WELLS

Do not use this form for proposals to drill or to deepen or reentry to a different reservoir.

Use "APPLICATION FOR PERMIT -" for such proposals.

SUBMIT IN TRIPLICATE

1. Type of Well

☐ Oil Well ☒ Gas Well ☐ Other

2. Name of Operator

ENERGEN RESOURCES CORPORATION

3. Address and Telephone No.

2198 Bloomfield Highway, Farmington, NM 87401

4. Location of Well (Footage, Sec., T., R., M., or Survey Description)

1650' FSL, 990' FWL, Sec. 14, T27N, R3W, N.M.P.M.

FORM APPROVED

Budget Bureau No. 1004-0135

Expires: March 31, 1993

5. Lease Designation and Serial No.

Jic Cont 89

6. If Indian, Allottee or Tribe Name

Jicarilla Apache

7. If Unit or CA, Agreement Designation

8. Well Name and No.

Jicarilla 89 2

9. API Well No.

30-039-07057

10. Field and Pool, or exploratory Area

Blanco Mesaverde

11. County or Parish, State

Rio Arriba NM

12. CHECK APPROPRIATE BOX(S) TO INDICATE NATURE OF NOTICE, REPORT, OR OTHER DATA

TYPE OF SUBMISSION

- ☒ Notice of Intent
☐ Subsequent Report
☐ Final Abandonment Notice

TYPE OF ACTION

- ☒ Abandonment
☐ Recompletion
☐ Plugging Back
☐ Casing Repair
☐ Altering Casing
☐ Other _____
☐ Change of Plans
☐ New Construction
☐ Non-Routine Fracturing
☐ Water Shut-Off
☐ Conversion to Injection
☐ Dispose Water

(Note: Report results of multiple completion on Well Completion or Recompletion Report and Log form.)

13. Describe Proposed or Completed Operations (Clearly state all pertinent details, and give pertinent dates, including estimated date of starting any proposed work. If well is directionally drilled, give subsurface locations and measured and true vertical depths for all markers and zones pertinent to this work.)*

Energen Resources Corporation intends to plug and abandon this well per the attached plug and abandonment procedure.



14. I hereby certify that the foregoing is true and correct

Signed [Signature]

Title Drilling & Completion Foreman

Date 3/7/01

(This space for Federal or State office use)

Approved by [Signature]

Lands and Mineral Resources

Title _____

Date _____

MAR 27 2001

Conditions of approval, if any:

Title 18 U.S.C. Section 1001, makes it a crime for any person knowingly and willfully to make to any department or agency of the United States any false, fictitious or fraudulent statements or representations as to any matter within its jurisdiction.

* See Instruction on Reverse Side

PLUG & ABANDONMENT PROCEDURE

02/28/01

Jicarilla 89 #2

Blanco Mesaverde

1650' FSL & 990' FWL, Section 14, T-27-N, R-3-W

Rio Arriba Co., New Mexico, API #30-039-07057

Long: / Lat:

Note: All cement volumes use 100% excess outside pipe and 50' excess inside. The stabilizing wellbore fluid will be 8.3 ppg, sufficient to balance all exposed formation pressures. All cement will be ASTM Type II, mixed at 15.6 ppg with a 1.18 cf/sx yield.

1. Install and test rig anchors. Prepare blow pit. Comply with all NMOCD, BLM and Energen safety rules and regulations. MOL and RU daylight pulling unit. Blow well down; kill with water if necessary. ND wellhead and NU BOP and stripping head; test BOP.
2. PU on tubing and release Model "R" packer set in 15,000# compression at 5512'. TOH and tally tubing; LD packer. If necessary LD tubing and PU workstring.
3. **Plug #1 (Mesaverde perforations, 5573' – 5473')**: Set 5-1/2" wireline CIBP or CR at 5573'. TIH with tubing and tag. Load casing with water and circulate the well clean. Pressure test casing to 500#. If casing does not test, then spot or tag subsequent plugs as appropriate. Mix 17 sxs cement and spot a balanced plug inside casing above the CIBP, to isolate the Mesaverde perforations. TOH with tubing.
4. **Plug #2 (Pictured Cliffs, Fruitland, Kirtland and Ojo Alamo tops, 3830' – 3275')**: Perforate 3 HSC squeeze holes at 3830'. Establish rate into squeeze holes if casing tested. Set 5-1/2" retainer at 3780'. Pressure test the tubing to 1000#. Establish rate below the CR into squeeze holes. Mix 233 sxs cement, squeeze 163 sxs cement outside 5-1/2" casing and leave 70 sxs cement inside casing to cover through the Ojo Alamo top. TOH with tubing.
5. **Plug #3 (Nacimiento top, 1480' – 1380')**: Perforate 3 HSC squeeze holes at 1480'. Establish rate into squeeze holes if casing tested. Set 5-1/2" retainer at 1430'. Establish rate into squeeze holes. Mix 47 sxs cement, squeeze 30 sxs cement outside 5-1/2" casing and leave 17 sxs cement inside casing to cover Nacimiento top. TOH and LD tubing.
6. **Plug #4 (8-5/8" Casing shoe, 374' - Surface)**: Perforate 3 HSC squeeze holes at 374'. Establish circulation out bradenhead. Mix and pump approximately 120 cement down 5-1/2" casing, circulate good cement out bradenhead valve. SI and WOC.
7. ND BOP and cut off casing below surface. Install P&A marker with cement to comply with regulations. RD, move off location, cut off anchors and restore location.

Jicarilla 89 #2

Current

Blanco Mesaverde

SW, Section 14, T-27-N, R-3-W, Rio Arriba County, NM

Long: / Lat:

API #30-039-07057

Today's Date: 02/28/01

Spud: 9/7/56

Completed: 10/1/56

Elevation: 7080' GL
7093' KB

Nacimiento @ 1430'

Ojo Alamo @ 3325'

Kirtland @ 3540'

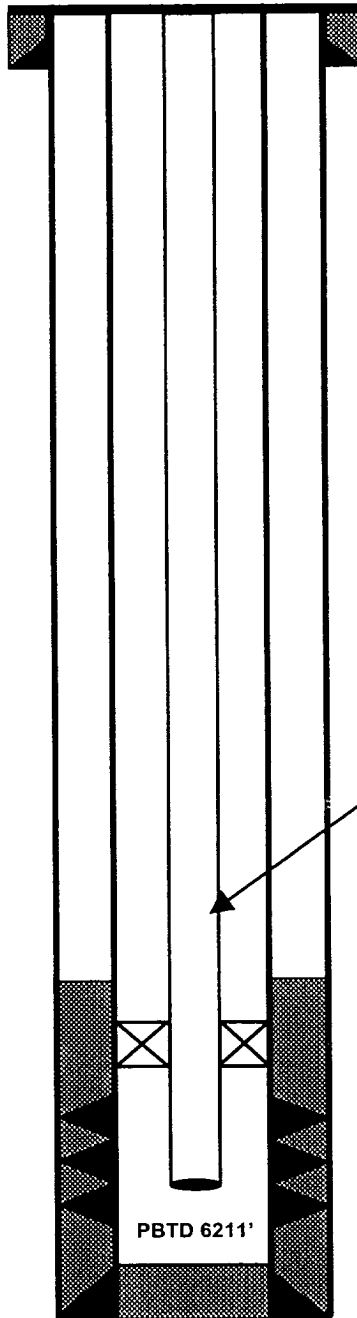
Fruitland @ 3630'

Pictured Cliffs @ 3780'

Mesaverde @ 5621'

12-1/4" hole

7-7/8" hole



8-5/8" 29# Casing set @ 324'
Cmt w/ 180 sxs (Circulated to Surface)

Well History

No production since 1989.

July '98: Bradenhead Test: SICP and SITP – zero; Bradenhead – zero, no flow.

Mar '99: Tag bottom at 6118'; pull tubing; set Baker Model R-3 packer in 15,000# compression at 5512', land tubing.

Mar '99: Swab Well - 46 runs, recovered 225 bbls, FL at 1900'.

Apr '99: Swab Well - 44 runs, unknown fluid recovery, FL at 1500'.

Nov '00: Swab Well – 87 runs, recovered 337 bbls, FL at 2500'.

2-3/8" tubing @ 6071'
195 jts, 4.7# J-55, SN 6093')

TOC @ 5490' (T.S.)

Baker Model R-3 set in 15,000#
Compression at 5512'

Mesaverde Perforations:
5623' – 6126'

5-1/2" 14#/15.5# J-55 Casing set @ 6211'
Cemented with 100 sxs

Jicarilla 89 #2

Proposed P&A

Blanco Mesaverde

SW, Section 14, T-27-N, R-3-W, Rio Arriba County, NM

Long: / Lat:

API #30-039-07057

Today's Date: 02/28/01

Spud: 9/7/56

Completed: 10/1/56

Elevation: 7080' GL
7093' KB

Nacimiento @ 1430'

Ojo Alamo @ 3325'

Kirtland @ 3540'

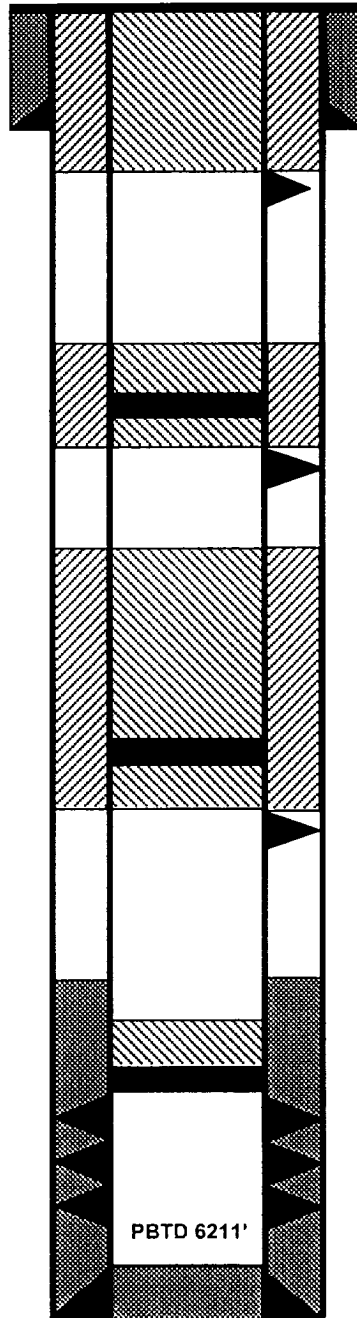
Fruitland @ 3630'

Pictured Cliffs @ 3780'

Mesaverde @ 5621'

12-1/4" hole

7-7/8" hole



8-5/8" 29# Casing set @ 324'
Cmt w/ 180 sxs (Circulated to Surface)

Plug #4 374' - Surface
Cement with 120 sxs

Perforate @ 374'

Plug #3 1480' - 1380'
Cement with 47 sxs,
30 sxs outside casing
and 17 sxs inside.

Cmt Retainer @ 1430'

Perforate @ 1480'

Plug #2 3830' - 3275'
Cement with 233 sxs,
163 sxs outside casing
and 70 sxs inside.

Cmt Retainer @ 3780'

Perforate @ 3830'

TOC @ 5490' (T.S.)

Plug #1 5573' - 5473'
Cement with 17 sxs

Set CIBP @ 5573'

Mesaverde Perforations:
5623' - 6126'

5-1/2" 14#/15.5# J-55 Casing set @ 6211'
Cemented with 100 sxs

BLM CONDITIONS OF APPROVAL

The following surface rehabilitation Conditions of Approval must be complied with as applicable, before this well can be approved for final abandonment (see 43 CFR 3162.3-4). Surface rehabilitation work shall be completed within one year of the actual plugging date. Notification for completion of this work can be submitted with a Sundry Notice. Questions? Call Pat Hester at (505) 761-8786.

1. All fences, production equipment, purchaser's equipment, concrete slabs, deadman (anchors), flowlines, risers, debris and trash must be removed from the location. Non-retrieved flowlines and pipelines will be abandoned in accordance with State Rule 714. Information supporting the non-retrieval will be included in the subsequent report or final abandonment Sundry Notice.

2. Production pits will be closed according to the Unlined Surface Impoundment Closure Guidelines, as approved in the Environmental Assessment of December 1993. Any oil stained soils can be remediated on-site according to these guidelines or disposed of in a an approved facility.

3. The well pad will be shaped to the natural terrain and left as rough as possible. All compacted areas and areas devoid of vegetation shall be ripped to a minimum of 12" in depth before reseeding.

4. Access roads will be shaped to conform to the natural terrain and left as rough as possible to deter vehicle travel. Access will be ripped to a minimum of 12" in depth, water barred and reseeded. All erosion problems created by the development must be corrected prior to acceptance of release. Water bars should be spaced as shown below along the fall line of the slope:

| % Slope | Spacing Interval |
|------------------|------------------|
| Less than 20% | 200' |
| 2 to 5 % | 150' |
| 6 to 9 % | 100' |
| 10 to 15 % | 50' |
| Greater than 15% | 30' |

5. All disturbed areas will be seeded with the prescribed certified seed mix (reseeding may be required). Seed mix must be certified weed free to avoid the introduction of noxious weeds. Refer to the original APD for seed mix.

6. Notify Surface Managing Agency seven (7) days prior to seeding so that they may be present to witness.

7. The period of liability under the bond of record will not be terminated until the well is inspected and the surface rehabilitation approved.

Other Surface Managing Agencies (SMA's) may vary slightly in their restoration requirements. It is your responsibility, as the operator, to obtain surface restoration requirements from other SMA's. We need to be provided with a copy of these requirements. Any problems concerning stipulations received from other SMA's should be brought to us.

On private land, a letter from the fee owner stating that the surface restoration is satisfactory will be provided to the office. Questions? Call Pat Hester at (505) 761-8786.