

UNITED STATES
DEPARTMENT OF THE INTERIOR
BUREAU OF LAND MANAGEMENT

FORM APPROVED
Budget Bureau No. 1004-0135
Expires: March 31, 1993

SUNDRY NOTICES AND REPORTS ON WELLS

Do not use this form for proposals to drill or to deepen or reentry to a different reservoir.
Use "APPLICATION FOR PERMIT—" for such proposals

5. Lease Designation and Serial No.

SF 079298 B

6. If Indian, Allottee or Tribe Name

7. If Unit or CA, Agreement Designation

San Juan Unit 28-7

8. Well Name and No.

125

9. API Well No.

30-039-07102

10. Field and Pool, or Exploratory Area

Mesaverde, Dakota

11. County or Parish, State

Rio Arriba, NM

SUBMIT IN TRIPLICATE

1. Type of Well

Oil Well Gas Well Other

2. Name of Operator

CONOCO INC.

3. Address and Telephone No.

10 DESTA DR. STE. 100W, MIDLAND, TX. 79705-4500 (915) 686-5424

4. Location of Well (Footage, Sec., T. R. M. or Survey Description)

990' FSL, 1190' FWL, Sec. 12, T27N, R7W

CHECK APPROPRIATE BOX(S) TO INDICATE NATURE OF NOTICE, REPORT, OR OTHER DATA

TYPE OF SUBMISSION

- Notice of Intent
 Subsequent Repon
 Final Abandonment Notice

TYPE OF ACTION

- Abandonment
 Recompletion
 Plugging Back
 Casing Repair
 Altering Casing
 Other _____
- Change of Plans
 New Construction
 Non-Routine Fracturing
 Water Shut-Off
 Conversion to Injection
 Dispose Water

(Note: Repon results of multiple completion Well Completion or Recompletion Report and Log form.)

13. Describe Proposed or Completed Operations (Clearly state all pertinent details, and give pertinent dates, including estimated date of starting any proposed work. If well is directionally drilled, give subsurface locations and measured and true vertical depths for all markers and zones pertinent to this work.)*

It is proposed to recomplete this well to the Mesaverde by the following procedure:

1. Set CIBP at 5650' to isolate Dakota perforations.
2. Perforate Point Lookout from 5456' - 5630', 25 total holes, and frac.
3. Set CIBP at 5430', perforate Menefee from 5139' - 5404', 25 total holes, and frac.
4. Set CIBP at 5065', perforate Cliffhouse from 4932' - 5011', and frac.
5. Drill out all CIBPs, clean out well to PBTB and put on production.

RECEIVED
BLM
MAY 22 PM 2:29
BUREAU OF LAND MANAGEMENT, NM

Application for Down Hole Commingling of Mesaverde and Dakota has previously been submitted.

RECEIVED
MAY 30 1997

OIL CON. DIV.
DIST. 3

4. I hereby certify that the foregoing is true and correct

Signed

Jerry W. Hoover

Title

Jerry W. Hoover
Sr. Conservation Coordinator

Date

5/13/97

(This space for Federal or State office use)

Approved by

Barbara E. ...

Title

Barbara E. ...

Date

MAY 27 1997

Conditions of approval if any:

Title 18 U.S.C. Section 1001, makes it a crime for any person knowingly and willfully to make to any department or agency of the United States any false, fictitious or fraudulent statements or representations as to any matter within its jurisdiction.

*See Instruction on Reverse Side

NMOCB

②

District I
PO Box 1980, Hobbs, NM 88241-1980

District II
PO Drawer DD, Artesia, NM 88211-0719
District III
1000 Rio Brazos Rd. Aztec, NM 87410
District IV
PO Box 2088, Santa Fe, NM 87504-2088

State of New Mexico
Energy, Minerals & Natural Resources Department

OIL CONSERVATION DIVISION
PO Box 2088
Santa Fe, NM 87504-2088

OK
Revised February 21, 1994
instructions on back
Submit to Appropriate District Office
State Lease - 4 Copies
Fee Lease - 3 Copies

Form C-102

AMENDED REPORT

WELL LOCATION AND ACREAGE DEDICATION PLAT

1 API Number 30-039-07102		2 Pool Code 72319		3 Pool Name Mesaverde	
4 Property Code 016608		5 Property Name San Juan 28-7 Unit			6 Well Number 125
7 GRID No. 005073		8 Operator Name Conoco Inc., 10 Desta Drive, Ste. 100W, Midland, TX 79705-4500			9 Elevation 6646

10 Surface Location

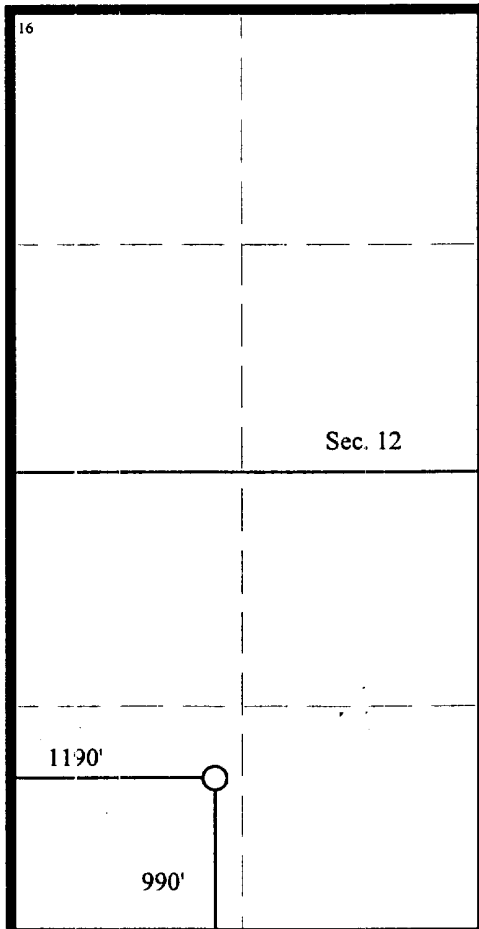
UL or lot no.	Section	Township	Range	Lot Idn	Feet from the	North/South line	Feet from the	East/West line	County
M	12	27N	7W		990	S	1190	W	Rio Arriba

11 Bottom Hole Location If Different From Surface

UL or lot no.	Section	Township	Range	Lot Idn	Feet from the	North/South line	Feet from the	East/West line	County

12 Dedicated Acres 320.0	13 Joint or Infill	14 Consolidation Code	15 Order No.
-----------------------------	--------------------	-----------------------	--------------

NO ALLOWABLE WILL BE ASSIGNED TO THIS COMPLETION UNTIL ALL INTERESTS HAVE BEEN CONSOLIDATED OR A NON-STANDARD UNIT HAS BEEN APPROVED BY THE DIVISION



RECEIVED
MAY 30 1997
OIL CON. DIV.
DIST. 3

Sec. 12

SF-079298 B

RECEIVED
MAY 22 PM 2:30
STH

17 OPERATOR CERTIFICATION

I hereby certify that the information contained herein is true and complete to the best of my knowledge and belief

Jerry W. Hoover
Signature
Jerry W. Hoover
Printed Name
Sr. Cons. Coordinator, Conoco Inc.
Title
5/13/97
Date

18 SURVEYOR CERTIFICATION

I hereby certify that the well location shown on this plat was plotted from field notes of actual surveys made by me or under my supervision, and that the same is true and correct to the best of my belief.

Date of Survey
Signature and Seal of Professional Surveyor:
Certificate Number