

**NEW MEXICO OIL CONSERVATION COMMISSION
WELL LOCATION AND ACREAGE DEDICATION PLAT**

Form C-102
Supersedes C-128
Effective 1-1-65

All distances must be from the outer boundaries of the Section.

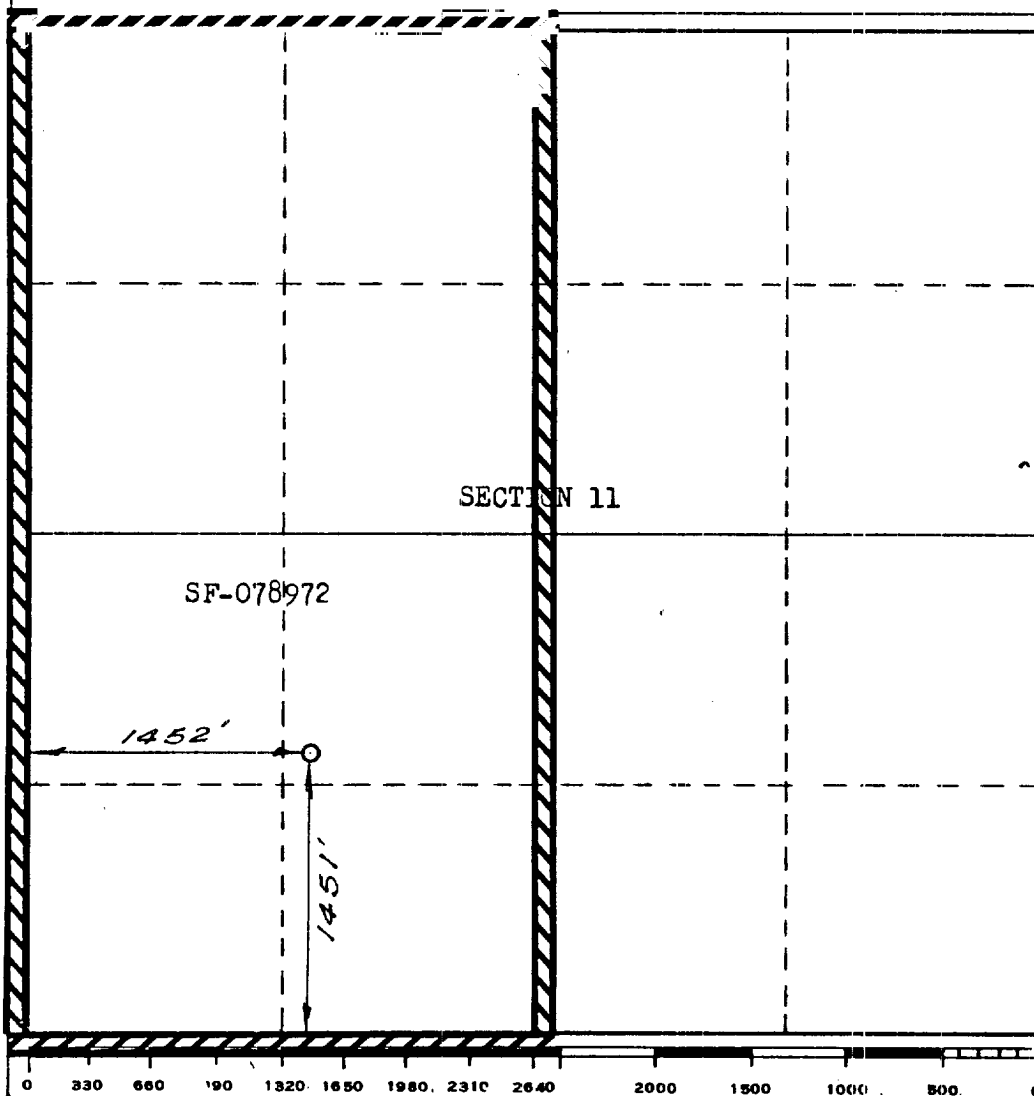
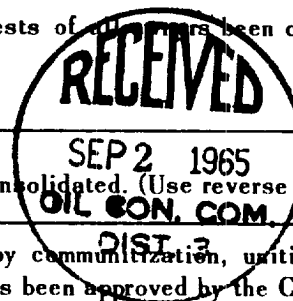
Operator EL PASO NATURAL GAS COMPANY			Lease SAN JUAN 28-7 UNIT SF-078972		Well No. 124
Unit Letter K	Section 11	Township 27-N	Range 7-W	County RIO ARriba	
Actual Footage Location of Well: 1451 feet from the SOUTH line and 1452 feet from the WEST line					
Ground Level Elev: 6634	Producing Formation DAKOTA		Pool BASIN DAKOTA		Dedicated Acreage: 320 Acres

1. Outline the acreage dedicated to the subject well by colored pencil or hachure marks on the plat below.
2. If more than one lease is dedicated to the well, outline each and identify the ownership thereof (both as to working interest and royalty).
3. If more than one lease of different ownership is dedicated to the well, have the interests of all leases been consolidated by communitization, unitization, force-pooling, etc?

☒ Yes ☐ No If answer is "yes," type of consolidation **Unitization**

If answer is "no," list the owners and tract descriptions which have actually been consolidated. (Use reverse side of this form if necessary.) _____

No allowable will be assigned to the well until all interests have been consolidated (by communitization, unitization, forced-pooling, or otherwise) or until a non-standard unit, eliminating such interests, has been approved by the Commission.



CERTIFICATION	
I hereby certify that the information contained herein is true and complete to the best of my knowledge and belief.	
ORIGINAL SIGNED E. S. OBERLY	
Name	Petroleum Engineer
Position	El Paso Natural Gas Company
Company	September 1, 1965
Date	
I hereby certify that the well location shown on this plat was plotted from field notes of actual surveys made by me or under my supervision, and that the same is true and correct to the best of my knowledge and belief.	
Date Surveyed	AUGUST 20, 1965
Registered Professional Engineer and/or Land Surveyor <i>[Signature]</i>	
Certificate No.	1760