

**NEW MEXICO OIL CONSERVATION COMMISSION
WELL LOCATION AND ACERAGE DEDICATION PLAT**

All distances must be from the outer boundaries of the Section

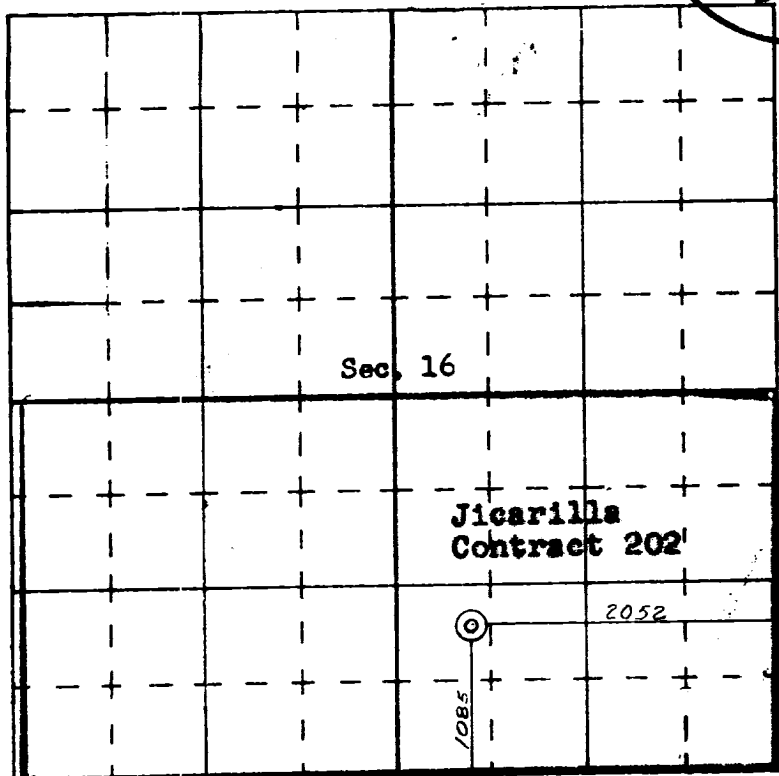
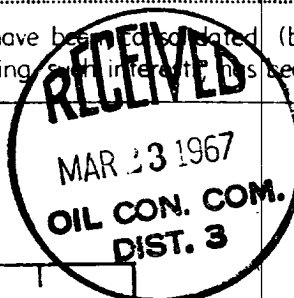
Operator BENSON*MONTIN-GREER DRILLING CORP.		Lease JICARILLA 202		Well No. 1 (0-16)	
Unit Letter 0	Section 16	Township 27 NORTH	Range 1 WEST	County Rio Arriba	
Actual Footage Location of Well: 1085 feet from the South line and 2052 feet from the East line					
Ground Level Elev. 7804.0	Producing Formation Mancos	Pool West Puerto Chiquito	Dedicated Acreage 320		Acres

1. Outline the acreage dedicated to the subject well by colored pencil or hatchure marks on the plat below.
2. If more than one lease is dedicated to the well, outline each and identify the ownership thereof (both as to working interest and royalty).
3. If more than one lease of different ownership is dedicated to the well, have the interests of all owners been consolidated by communitization, unitization, force-pooling, etc?

☒ Yes ☐ No If answer is "yes," type of consolidation

If answer is "no," list the owners and tract descriptions which have actually consolidated. (Use reverse side of this form if necessary.)

No allowable will be assigned to the well until all interests have been consolidated (by communitization, unitization, forced-pooling, or otherwise) or until a non standard unit, eliminating such interest, has been approved by the Commission.



SCALE—4 INCHES EQUALS 1 MILE

SAN JUAN ENGINEERING COMPANY, FARMINGTON, N. M.

CERTIFICATION

I hereby certify that the information contained herein is true and complete to the best of my knowledge and belief.

Alfred A. Cooke
Name **Engineer**

Position
Benson-Montin-Greer Drilling Corp.

Company
March 20, 1967

Date

I hereby certify that the well location shown on this plat was plotted from field notes of actual surveys made by me or under my supervision, and that the same is true and correct to the best of my knowledge and belief.

March 21, 1967
Date
Professional
Land Surveyor
P. S. ...
Certificate