

NEW MEXICO OIL CONSERVATION COMMISSION WELL LOCATION AND ACERAGE DEDICATION PLAT

All distances must be from the outer boundaries of the Section

BENSON-MONTIN-GREER DRILLING CORP.

Lease

JICARILLA 202

1 (0-16)

0

16

27 NORTH

1 WEST

Rio Arriba

1085

South

1085

2052

East

7804.0

Mancos

Pool

West Puerto Chiquito

320

Outline the acreage dedicated to the subject well by colored pencil or hatchure marks on the plat below

1. If more than one lease is dedicated to the well, outline each and identify the ownership thereof (vest interest and royalty)

2. If more than one lease of different ownership is dedicated to the well, have the interests of all owners been consolidated, unitization, force-pooling, etc?

☒ Yes ☐ No If answer is "yes," type of consolidation

If answer is "yes" list the owners and tract descriptions which have actually consolidated. (Use reverse side of this plat for list)

How the well will be assigned to the well until all interests have been consolidated (by communication, unitization, force-pooling, or otherwise) or until a non standard unit, eliminating such interest, has been approved by the Commission

RECEIVED

MAR 23 1967
OIL CON. COM.
DIST. 3

CERTIFICATION

I hereby certify that the information contained herein is true and complete to the best of my knowledge and belief.

David A. Greer
Engineer

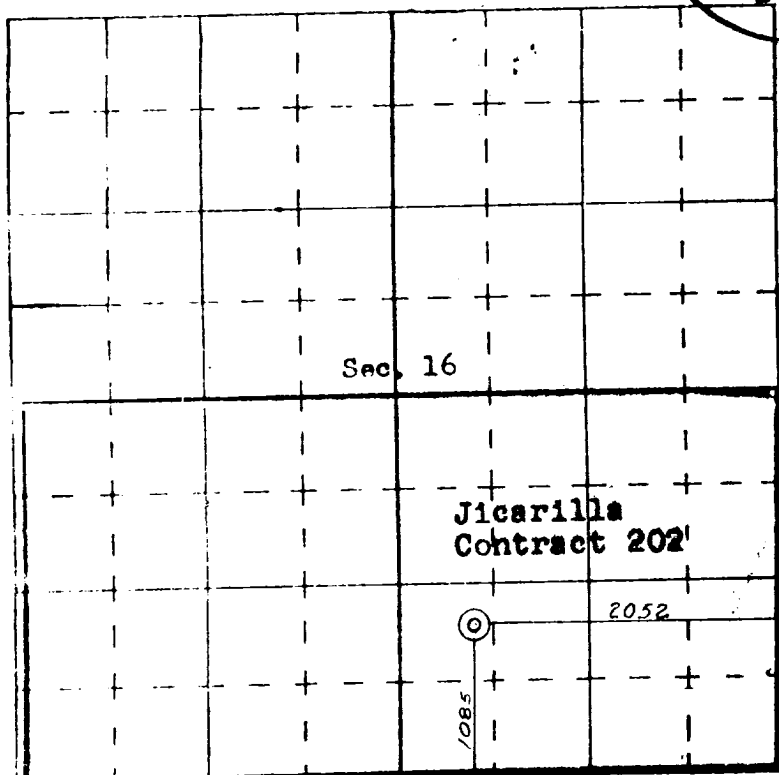
Position
Benson-Montin-Greer Drilling Corp.

Company
March 20, 1967

Date

I hereby certify that the well location on this plat was plotted from the original surveys made by me or under my supervision and that the same is true and correct to the best of my knowledge and belief

March 20, 1967
David A. Greer
Professional Engineer
No. 10,000
State of New Mexico
FARMINGTON, N. M.



SCALE—4 INCHES EQUALS 1 MILE

ENGINEERING COMPANY, FARMINGTON, N. M.