

UNITED STATES
DEPARTMENT OF THE INTERIOR
GEOLOGICAL SURVEY

APPLICATION FOR PERMIT TO DRILL, DEEPEN, OR PLUG BACK

1a. TYPE OF WORK
DRILL ☒ DEEPEN ☐ PLUG BACK ☐

b. TYPE OF WELL
OIL WELL ☐ GAS WELL ☒ OTHER ☐ SINGLE ZONE ☒ MULTIPLE ZONE ☐

2. NAME OF OPERATOR

El Paso Natural Gas Company

3. ADDRESS OF OPERATOR

Box 990, Farmington, New Mexico

4. LOCATION OF WELL (Report location clearly and in accordance with any State requirements.)*
At surface

1850'N, 1190'E

At proposed prod. zone

14. DISTANCE IN MILES AND DIRECTION FROM NEAREST TOWN OR POST OFFICE*

15. DISTANCE FROM PROPOSED*
LOCATION TO NEAREST
PROPERTY OR LEASE LINE, FT.
(Also to nearest drig. unit line, if any)

16. NO. OF ACRES IN LEASE

18. DISTANCE FROM PROPOSED LOCATION*
TO NEAREST WELL, DRILLING, COMPLETED,
OR APPLIED FOR, ON THIS LEASE, FT.

19. PROPOSED DEPTH

7970'

17. NO. OF ACRES ASSIGNED
TO THIS WELL

320

20. ROTARY OR CABLE TOOLS

Rotary

21. ELEVATIONS (Show whether DF, RT, GR, etc.)

6666' GL

22. APPROX. DATE WORK WILL START*

23. PROPOSED CASING AND CEMENTING PROGRAM

SIZE OF HOLE	SIZE OF CASING	WEIGHT PER FOOT	SETTING DEPTH	QUANTITY OF CEMENT
13 3/4"	9 5/8"	32.30#	300'	200 lbs. to circulate
8 3/4"			6000'	
7 7/8"	4 1/2"	10.5 & 11.6#	7970'	690 lbs. - 3 stages

Production Casing Cementing:

First stage to fill from total depth to the top of the Gallup formation.

Second stage to cover the Mesa Verde formation.

Third stage to cover the Pictured Cliffs formation.

Selective zones in the Dakota formation will be perforated and sand-water fractured.

The E/2 of Section 14 is dedicated to this well.

IN ABOVE SPACE DESCRIBE PROPOSED PROGRAM: If proposal is to deepen or plug back, give data on present production and proposed new productive zone. If proposal is to drill or deepen directionally, give pertinent data on subsurface locations and measured and true vertical depths. Give blowout preventer program, if any.

24.

SIGNED Original Signed F. H. WOOD

TITLE Petroleum Engineer

DATE MAY 24 1967

(This space for Federal or State office use)

PERMIT NO.

APPROVAL DATE

APPROVED BY

TITLE

CONDITIONS OF APPROVAL, IF ANY:

RECEIVED

DATE MAY 23 1967

U. S. GEOLOGICAL SURVEY
BIRMINGHAM, ALA.

*See Instructions On Reverse Side

NEW MEXICO OIL CONSERVATION COMMISSION
WELL LOCATION AND ACERAGE DEDICATION PLAT

All distances must be from the outer boundaries of the Section

Operator **EL PASO NATURAL GAS COMPANY** Lease **SAN JUAN 27-5 UNIT (SF 079 492-A)** Well No. **103**
Unit Letter **H** Section **14** Township **27 NORTH** Range **5 WEST** County **RIO ARriba**
Actual Footage Location of Well: **1850** feet from the **NORTH** line and **1190** feet from the **EAST** line
Ground Level Elev. **6666** Producing Formation **DAKOTA** Pool **BASIN DAKOTA** Dedicated Acreage **320** Acres

1. Outline the acreage dedicated to the subject well by colored pencil or hatchure marks on the plat below.
2. If more than one lease is dedicated to the well, outline each and identify the ownership thereof (both as to working interest and royalty).
3. If more than one lease of different ownership is dedicated to the well, have the interests of all owners been consolidated by communization, unitization, forced-pooling, etc?

☒ Yes ☐ No If answer is "yes," type of consolidation **Unitization**

If answer is "no," list the owners and tract descriptions which have actually consolidated. (Use reverse side of this form if necessary.)

No allowable will be assigned to the well until all interests have been consolidated (by communization, unitization, forced-pooling, or otherwise) or until a non standard unit, eliminating such interests, has been approved by the Commission.

RECEIVED
MAY 24 1967

OIL CON. COM.
DIST. 3

CERTIFICATION

I hereby certify that the information contained herein is true and complete to the best of my knowledge and belief.

Original Signed **F. H. WOOD**

Name

Petroleum Engineer

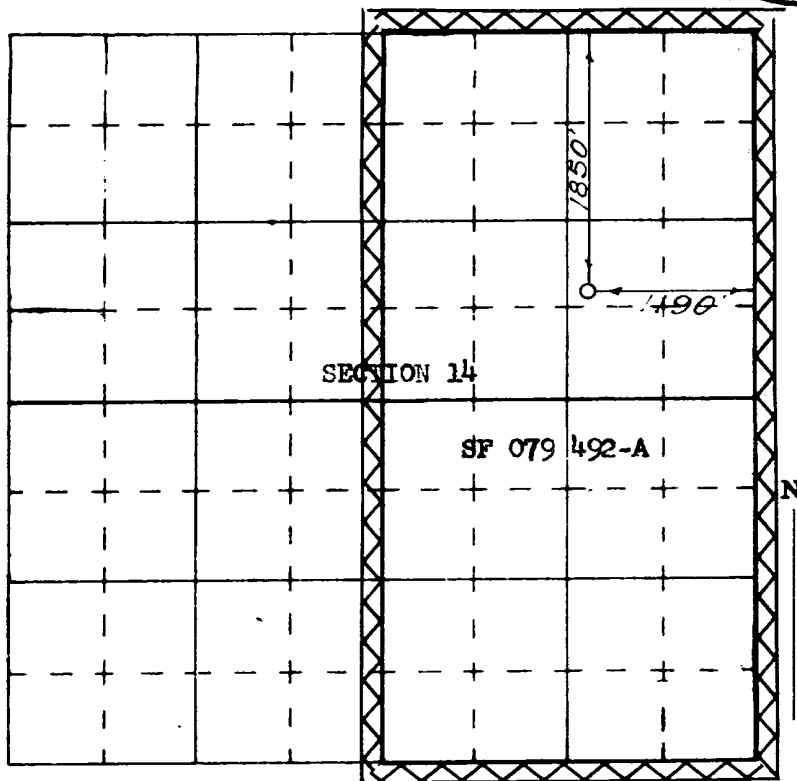
Position

El Paso Natural Gas Company

Company

May 22, 1967

Date



I hereby certify that the well location shown on this plat was plotted from field notes of actual surveys made by me or under my supervision, and that the same is true and correct to the best of my knowledge and belief.

Date Surveyed

APRIL 11, 1967

Registered Professional Engineer
and/or Land Surveyor

David O. Kilmer
Certificate No. **1760**