

submitted in lieu of Form 3160-5

UNITED STATES
DEPARTMENT OF THE INTERIOR
BUREAU OF LAND MANAGEMENT

Sundry Notices and Reports on Wells

1. Type of Well
GAS

2. Name of Operator
MERIDIAN OIL

3. Address & Phone No. of Operator
PO Box 4289, Farmington, NM 87499 (505) 326-9700

4. Location of Well, Footage, Sec., T, R, M
990' FSL, 990' FEL, Sec. 35, T-27-N, R-3-W, NMPM
P

5. Lease Number
Jic Contract 95
6. If Indian, All. or
Tribe Name
Jicarilla Apache
7. Unit Agreement Name

8. Well Name & Number
Jicarilla 95 #9
9. API Well No.
30-039-20169
10. Field and Pool
Gavilan Pictured Cliffs
11. County and State
Rio Arriba Co, NM

12. CHECK APPROPRIATE BOX TO INDICATE NATURE OF NOTICE, REPORT, OTHER DATA

Type of Submission

☒ Notice of Intent
☐ Subsequent Report
☐ Final Abandonment

Type of Action

☒ Abandonment
☐ Recompletion
☐ Plugging Back
☐ Casing Repair
☐ Altering Casing
☐ Other -
☐ Change of Plans
☐ New Construction
☐ Non-Routine Fracturing
☐ Water Shut off
☐ Conversion to Injection

13. Describe Proposed or Completed Operations

It is intended to plug and abandon the subject well according to the attached procedure and wellbore diagram.

RECEIVED
AUG 1 9 1996

OIL CON. DIV.
DIST. 3

14. I hereby certify that the foregoing is true and correct.

Signed Don R. Sheffield (ROS9) Title Regulatory Administrator Date 7/23/96

(This space for Federal or State Office use)

APPROVED BY Don R. Sheffield Title Chief, Lands and Mineral Resources
CONDITION OF APPROVAL, if any:

AUG 1 5 1996

Surface restoration requirements in attached letter.

PLUG & ABANDONMENT PROCEDURE

7-17-96

Jicarilla 95 #9

Gavilan Pictured Cliffs
SE Section 35, T-27-N, R-03-W
Rio Arriba Co., New Mexico

Note: All cement volumes use 100% excess outside pipe. The stabilizing wellbore fluid will be 8.3 ppg, sufficient to balance all exposed formation pressures.

1. Install and/or test rig anchors. Prepare blow pit. Comply to all NMOCD, BLM and Burlington safety rules and regulations.
2. MOL and RU daylight pulling unit. Blow well down; kill with water if necessary. ND wellhead and NU BOP and stripping head; test BOP.
3. POH and inspect 10 joints 1-1/4" 1.90#, H-40, IJ tubing (landed @ 332').
4. **Plug #1 (Pictured Cliffs and Fruitland top, 3705' - 3530')**: RIH with 1-1/4" IJ or EUE tubing workstring and tag bridge plug. Load casing with water and establish rate into casing leaks. Mix and spot 10 sx Class B cement plug inside casing above the bridge plug. POH to 3530 and reverse circulate well clean. POH with tubing.
5. **Plug #2 (Kirtland and Ojo Alamo tops, 3525' - 3295')**: Perforate 3 squeeze holes at 3525'. PU 3-1/2" wireline cement retainer and RIH; set at 3475'. RIH with stinger and establish rate into squeeze holes. Mix 69 sx Class B cement and squeeze 57 sx cement outside 3-1/2" casing and leave 12 sx cement inside casing to cover Ojo Alamo top. POH with tubing.
6. **Plug #3 (Nacimiento top, 1490' - 1390')**: Perforate 3 squeeze holes at 1490'. PU 3-1/2" wireline cement retainer and RIH; set at 1440'. Establish rate into squeeze holes. Mix 31 sx Class B cement and squeeze 25 sx cement outside 3-1/2" casing and leave 6 sx cement inside casing to cover Nacimiento top. POH and LD tubing.
7. **Plug #4 (Surface, 300' - Surface)**: Perforate 2 squeeze holes at 300'. Establish circulation out bradenhead valve. Mix and pump approximately 52 sx Class B cement down 3-1/2" casing, circulate good cement out bradenhead valve. Shut in well and WOC.
8. ND BOP and cut off casing below surface flange. Install P&A marker with cement to comply with regulations. RD, move off location, cut off anchors and restore location.

Recommended:


Operations Engineer

Approval:

Production Superintendent

Jicarilla 95 #9

Current

DPNO 29219A

Gavillan Pictured Cliffs

SE Section 35, T-27-N, R-3-W, Rio Arriba County, NM

Lat/Long.: 36.525223 / 107.107773

Today's Date: 7/22/96

Spud: 11/10/68

Completed: 4/29/69

Elevation: 7121' (GL)
7134' (KB)

Logs: GRN, GR-CBL-CCI.

9" hole

7", 23.0#, J-55, Csg set @ 250'.
Cmt w/75 sx (Circulated to Surface)

10 jts, 1-1/4", 1.90#, H-40, IJ. tbg landed @ 332'

Workover History

May '96: Pull 1-1/4" tbg; stuck RBP at 18',
fished out; ran 2-7/8" bit to 3625', clean out
to to 3710'; set CIBP at 3705'; csg no PT;
Ran CBL: isolate csg leaks from 2097' to
3524'; Blow well and CO to BP; LD work
string and land 10 jts 1-1/4" tubing at 332'

Nacimiento @ 1440'

Ojo Alamo @ 3345'

Kirtland @ 3475'

Fruitland @ 3565'

Pictured Cliffs @ 3628'

TOC @ 3540' (CBL)

CIBP @ 3705' (1996)

Pictured Cliffs Perforations:
3716' - 3796', Total 43 holes

PBTD 3828'

6-1/4" hole

TD 3868'

3-1/2", 9.2#, J-55, EUE, Csg set @ 3866',
Cmt w/50 sx (Float did not Hold)

Initial Potential

Initial AOF: 1,256 psig (4/69)
Current SICP: 412 psig (11/82)

Production History

Cumulative:
Current:

Gas

546.3 MMcf
0.0 Mcfd

Oil

0.0 Mbo
0.0 bbls/d

Ownership

GW: 100.00%
NRI: 87.50%
TRUST: 00.00%

Pipeline

WFS

Handwritten notes: 7/22/96, 01244

Jicarilla 95 #9

Proposed P&A

DPNO 29219A

Gavillan Pictured Cliffs

SE Section 35, T-27-N, R-3-W, Rio Arriba County, NM

Lat/Long.: 36.525223 / 107.107773

Today's Date: 7/22/96

Spud: 11/10/68

Completed: 4/29/69

Elevation: 7121' (GL)
7134' (KB)

Logs: GRN, GR-CBL-CCL

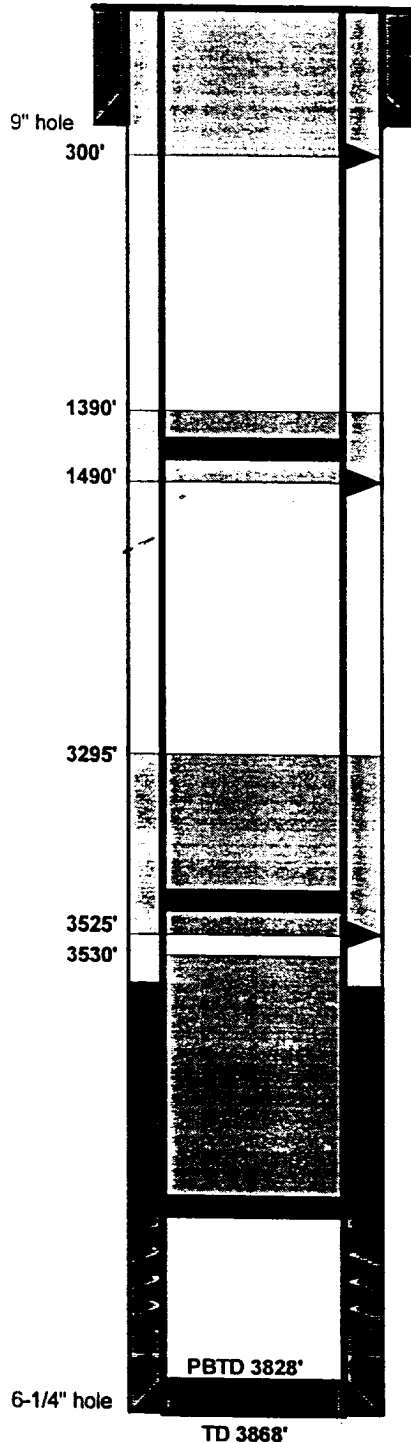
Nacimiento @ 1440'

Ojo Alamo @ 3345'

Kirtland @ 3475'

Fruitland @ 3565'

Pictured Cliffs @ 3628'



Plug #4: 300' - Surface,
Cmt w/52 sx Class B Cmt

7", 23.0#, J-55, Csg set @ 250',
Cmt w/75 sx (Circulated to Surface)
Perforate @ 300'

Plug #3: 1490' - 1390',
Cmt w/31 sx Class B Cmt,
25 sx outside csg and 6 sx
inside csg

Cmt Retainer @ 1440'

Perforate @ 1490'

Plug #2: 3525' - 3295',
Cmt w/69 sx Class B Cmt,
57 sx outside csg and 12 sx
inside csg

Cmt Retainer @ 3475'

Perforate @ 3525'

TOC @ 3540' (CBL)

Plug #1: 3705' - 3530',
Cmt w/10 sx Class B Cmt

CIBP @ 3705' (1996)

Pictured Cliffs Perforations:
3716' - 3796', Total 43 holes

3-1/2", 9.2#, J-55, EUE, Csg set @ 3866',
Cmt w/50 sx (Float did not Hold)

Initial Potential

Initial AOF: 1,256 psig (4/69)
Current SICP: 412 psig (11/82)

Production History

Cumulative:
Current:

Gas

546.3 MMcf
0.0 Mcfd

Oil

0.0 Mbo
0.0 bbls/d

Ownership

GW: 100.00%
NRI: 87.50%
TRUST: 00.00%

Pipeline

WFS

CONDITIONS OF APPROVAL FOR PERMANENT ABANDONMENT

Operator Meridian Oil Well Name Jicarilla 95 #9

1. Plugging operations authorized are subject to the "General Requirements for Permanent Abandonment of Wells on Federal Leases."
2. For wells on Federal leases, Al Yepa with the Cuba Field Office is to be notified at least 24 hours (48 hours if possible) before the plugging operations commence. His phone number is (505) 289-3748. Office hours are 7:45 a.m. to 4:30 p.m.

For wells on Jicarilla leases notify Erwin Elote with the Jicarilla Apache Tribe at least 24 hours (48 hours if possible) before the plugging operations commence. His phone number is (505) 759-3242.

3. Blowout prevention equipment is required.
4. The following modifications to your plugging program are to be made :
None