

NEW MEXICO OIL CONSERVATION COMMISSION

WELL LOCATION AND ACERAGE DEDICATION PLAT

All distances must be from the outer boundaries of the Section

Operator D. E. FLORANCE		Well No. 408	
Unit Letter B	Section 20	Township 27 NORTH	Range 1 WEST
Actual Footage Location of Well: 660 feet from the NORTH line and 2140 feet from the EAST line		County RIO ARriba	
Ground Level Elev. 7584.0	Producing Formation MANCOS	Dedicated Acreage 320 NS Acres	

1. Outline the acreage dedicated to the subject well by colored pencil or hachure marks on the plat below.

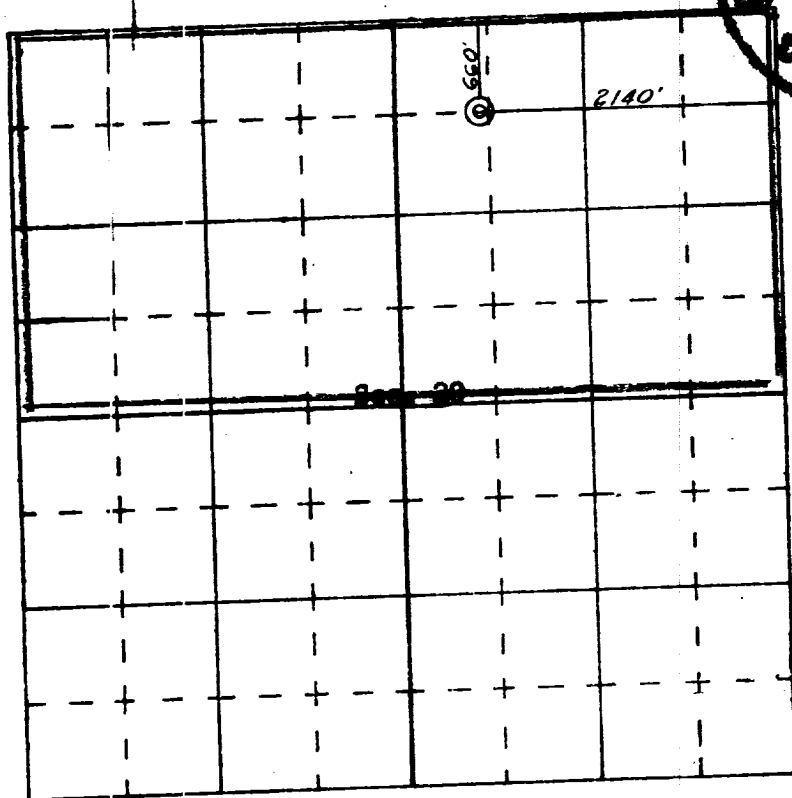
2. If more than one lease is dedicated to the well, outline each and identify the ownership thereof (both as to working interest and royalty).

3. If more than one lease of different ownership is dedicated to the well, have the interests of all owners been consolidated by communitization, unitization, force-pooling, etc?

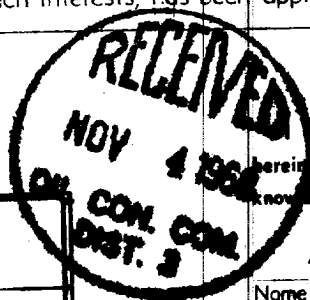
() Yes () No If answer is "yes," type of consolidation

If answer is "no," list the owners and tract descriptions which have actually consolidated. (Use reverse side of this form if necessary.)

No allowable will be assigned to the well until all interests have been consolidated (by communitization, unitization, forced-pooling, or otherwise) or until a non standard unit, eliminating such interests, has been approved by the Commission.



SCALE - 4 INCHES EQUALS 1 MILE



CERTIFICATION

I hereby certify that the information contained herein is true and complete to the best of my knowledge and belief.

D. E. Florance
 Name
 Operator
 Position
 Company
 Date *11/1/68*

I hereby certify that the well location shown on this plat was plotted from field notes of actual surveys made by me or under my supervision, and that the same is true and correct to the best of my knowledge and belief.

October 30, 1968
 Date Surveyed
James P. Luese
 Registered Professional Engineer
 and/or Land Surveyor
JAMES P. LUESE
 1463
 Certificate No.