

SAN JUAN 28-7 UNIT 129 (RCB 4/21/00)

Well Summary

API	300392043200	Field Name	BASIN DK	Area	EAST	Operator		County	RIO ARRIBA	State/Province	NEW MEXICO
KB Elev (ft)	6583.50	Ground Elev (ft)	6572.00	Casing Flange Elev (ft)	6572.00	KB-Ground Distance (ft)	11.50	KB-Casing Flange Distance (ft)	11.50	Spud Date	11/2/71

Location

East-West Distance (ft)	1670.0	From E or W Line	E	North-South Distance (ft)	1678.0	From N or S Line	N
Latitude (DMS)	36° 36' 19.584" N			Longitude (DMS)	107° 32' 20.76" W		
Legal Survey Type	Dwight's			Surface Legal Location	NMPM-27N-7W-2-NE SW NE		

Wellhead

Section	Make	Model	Working Pressure (psi)	Service
Top Connection Type	Top Sz (in)	Top WP (psi)	Bottom Connection Type	Btm Sz (in)

Casing Strings

Des	Run	Btm (ftKB)	Com
Surface Casing	11/3/71 4:00:00 AM	208.0	
Production Casing	11/24/71 9:30:00 AM	7,736.0	

Tubing Strings

Des	Run	Pulled	Btm (ftKB)
Tubing	11/26/71 4:00:00 PM	10/18/00	7,668.0
Tubing	10/31/00		31.5

Rods

Des	Run	Pulled	Btm (ftKB)

Other In Hole

Des	Run	Pull	Top (ftKB)	OD (in)	ID (in)

Wellbore

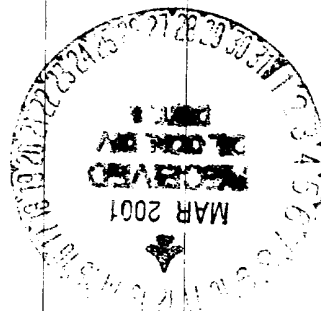
Name	Profile Type	VS Dir (°)
Main Hole		
Sz (in)	Top (ftKB)	Btm (ftKB)
13.748	11.5	208.0
8.748	208.0	5,782.0
7 7/8	5,782.0	7,736.0
		Start
		End
		11/3/71 1:15:00 AM
		11/13/71 6:30:00 AM
		11/23/71 10:30:00 AM

Zones

Zone	Pool	Top (ftKB)	Bottom (ftKB)
Producing Zone	DK		
Status Date	Zn Stat	Fluid Type	
4/21/00			

Perforations

Date	Top (ftKB)	Btm (ftKB)	Shot Dens (shots/ft)
11/25/71 6:45:00 AM	7,460.0	7,472.0	0.6
11/25/71 7:30:00 AM	7,490.0	7,502.0	0.6
11/25/71 8:15:00 AM	7,582.0	7,594.0	0.6
11/25/71 9:30:00 AM	7,622.0	7,630.0	0.9
11/25/71 10:15:00 AM	7,640.0	7,648.0	0.9
11/25/71 11:00:00 AM	7,662.0	7,670.0	0.9



Logs

Date	Type	Incr (ftKB)	Hole
12/9/71	IES FDC GR TS (WV54 LogRun)		Main Hole

Pumping Unit

Type	Make	Model	Serial Number
Installation Date	Maximum Rod Load (100lbf)	Current Stroke Length (in)	Maximum Stroke Length (in)
Gear Box Description	Gear Box SN	Gear Box Ratio	Max In Torq (1000in-lbs)
			Last Overhaul Date

Rec 8-12-00

Well History

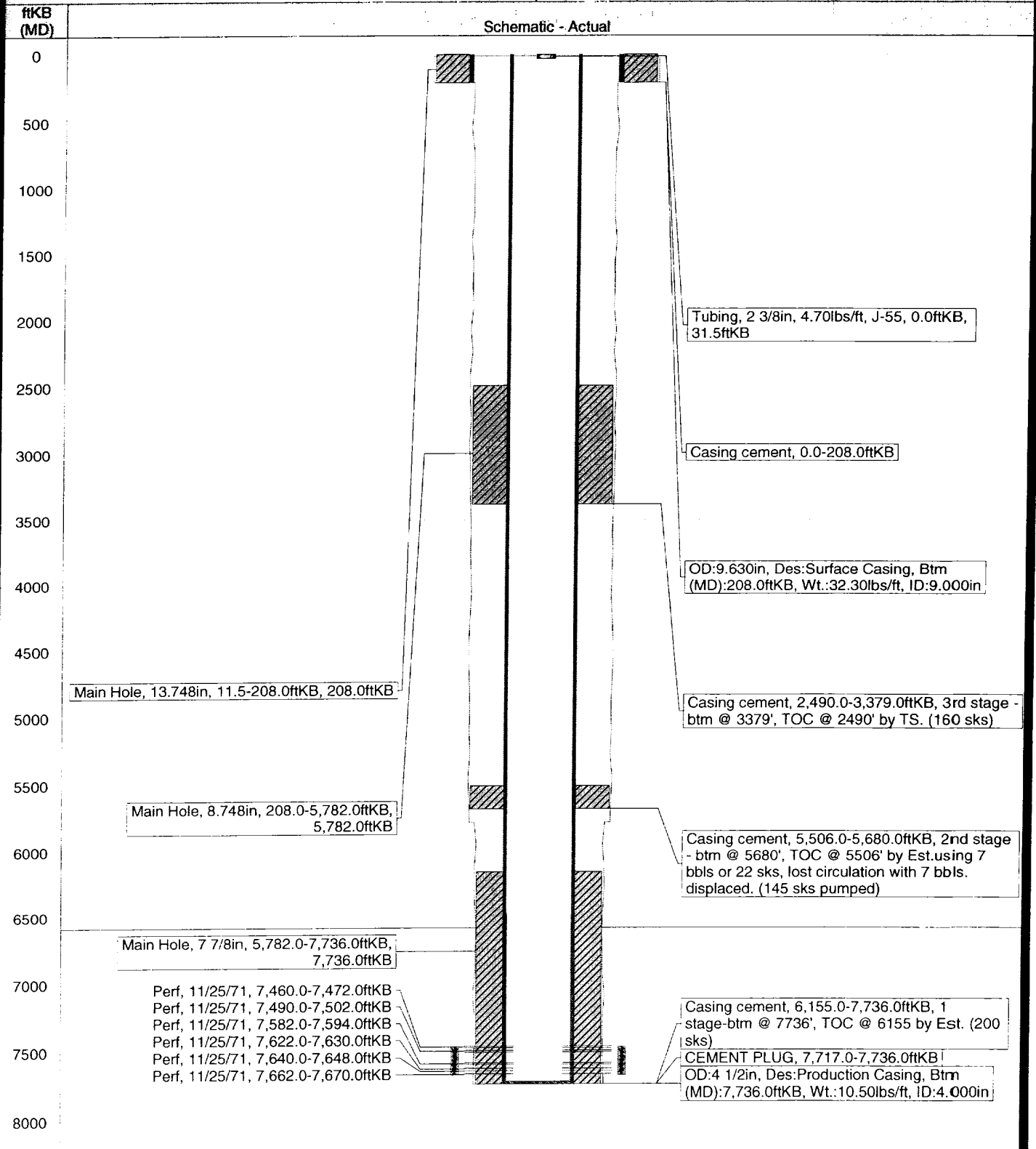
API	300392043200	Field Name	BASIN DK	Area	EAST	County	RIO ARRIBA	State/Province	NEW MEXICO	Operator		License No	
KB Elev (ft)	6583.50	Ground Elev (ft)	6572.00	KB-CF (ft)	11.50	KB-Tubing Head Distance (ft)	11.50	Plug Back Total Depth (ftKB)	7,717.0	Spud Date	11/2/71	Rig Release Date	

Date	Event
11/3/71	Casing:Run - Des: Surface Casing; Btm: 208.0 ftKB
11/3/71	Cement:Start -
11/24/71	Cement:Start - Com: 1 stage-btm @ 7736', TOC @ 6155 by Est. (200 sks)
11/24/71	Cement:Start - Com: 2nd stage - btm @ 5680', TOC @ 5506' by Est.using 7 bbls or 22 sks, lost circulation with 7 bbls. displaced. (145 sks pumped)
11/24/71	Cement:Start - Des: CEMENT PLUG
11/24/71	Cement:Start - Com: 3rd stage - btm @ 3379', TOC @ 2490' by TS. (160 sks)
11/24/71	Casing:Run - Des: Production Casing; Btm: 7,736.0 ftKB
11/25/71	Perforations:Date - Top: 7,460.0 ftKB; Btm: 7,472.0 ftKB; Shot Dens: 0.6 shots/ft
11/25/71	Perforations:Date - Top: 7,490.0 ftKB; Btm: 7,502.0 ftKB; Shot Dens: 0.6 shots/ft
11/25/71	Perforations:Date - Top: 7,582.0 ftKB; Btm: 7,594.0 ftKB; Shot Dens: 0.6 shots/ft
11/25/71	Perforations:Date - Top: 7,622.0 ftKB; Btm: 7,630.0 ftKB; Shot Dens: 0.9 shots/ft
11/25/71	Perforations:Date - Top: 7,640.0 ftKB; Btm: 7,648.0 ftKB; Shot Dens: 0.9 shots/ft
11/25/71	Perforations:Date - Top: 7,662.0 ftKB; Btm: 7,670.0 ftKB; Shot Dens: 0.9 shots/ft
11/26/71	Stims/Treats:Date - Type: Hydraulic propped frac; Com: Not mapped: stimulation.user2 = Water & Sand
	Not mapped: stimulation.user1 = Dakota
	71,330 gals. water & 70,000# sand
11/26/71	Tubing:Run - Des: Tubing; Btm: 7,668.0 ftKB; Com: THERE WAS ONLY ONE JT. 23/8" TBG. IN WELL WHEN MOVED ONTO. WILL TRY TO RE-ENTER CSG. WHERE IT WAS DRILLED OUTSIDE.
12/9/71	Logs:Date - Type: IES FDC GR TS (WV54 LogRun)
10/18/00	Tubing:Pulled - Des: Tubing; Pull Reas: Pulled for workover.; Com: THERE WAS ONLY ONE JT. 23/8" TBG. IN WELL WHEN MOVED ONTO. WILL TRY TO RE-ENTER CSG. WHERE IT WAS DRILLED OUTSIDE.
10/31/00	Tubing:Run - Des: Tubing; Btm: 31.5 ftKB

Current Schematic

API	300392043200	Field Name	BASIN DK	Area	EAST	Operator		County	RIO ARriba	State/Province	NEW MEXICO
KB Elev (ft)	6583.50	Ground Elev (ft)	6572.00	Casing Flange Elev (ft)	6572.00	KB-Ground Distance (ft)	11.50	KB-Casing Flange Distance (ft)	11.50	Spud Date	11/2/71

Main Hole: 10/31/00 (KB-Grd: 11.5ft)



Tubing String Summary

API	300392043200	Field Name	BASIN DK	Area	EAST	County	RIO ARRIBA	State/Province	NEW MEXICO	Operator		License No	
KB Elev (ft)	6583.50	Ground Elev (ft)	6572.00	KB-CF (ft)	11.50	KB-TH (ft)	11.50	Plug Back Total Depth (ftKB)	7,717.0	Spud Date	11/2/71	Rig Release Date	

Tubing Strings: Tubing set at 7,668.0 on 11/26/71 4:00:00 PM

Bottom or Set Depth (ftKB)	7,668.0	Set Tension (lbf)		String Max Nominal OD (in)	2 3/8	String Drift Min (in)		Comment	THERE WAS ONLY ONE JT. 23/8" TBG. IN WELL WHEN MOVED ONTO. WILL TRY TO RE-ENTER CSG. WHERE IT WAS DRILLED OUTSIDE.
----------------------------	---------	-------------------	--	----------------------------	-------	-----------------------	--	---------	---

Tubing Components

Jts	Item Desc	OD (in)	ID (in)	Wt (lbs/ft)	Grade	Top Thread	Top (ftKB)	Len (ft)	P(collapse) (psi)	P(burst) (psi)
246	Tubing	2 3/8	1.996	4.70	EUE J-55	8rd	0.0	7647.00		
1	Seating Nipple	2 3/8	1.996	4.70	EUE J-55	8rd	7,647.0	1.00		
1	Tubing	2 3/8	1.996	4.70	EUE J-55	8rd	7,648.0	20.00		
	Baker check valve	2 3/8	1.996	4.70	EUE J-55	8rd	7,668.0	0.00		

Tubing Strings: Tubing set at 31.5 on 10/31/00

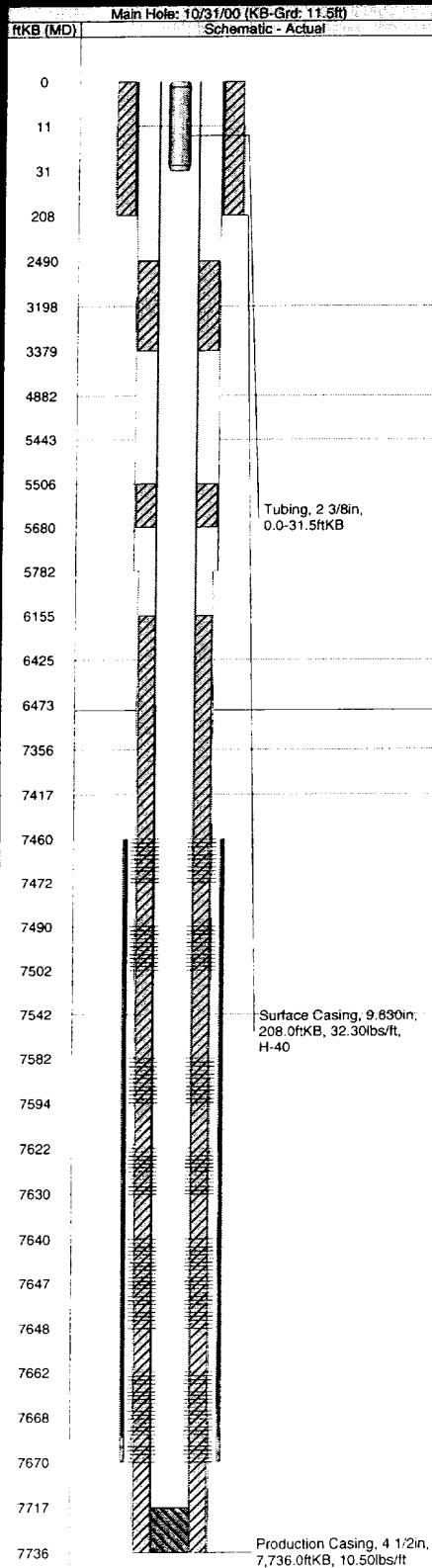
Bottom or Set Depth (ftKB)	31.5	Set Tension (lbf)		String Max Nominal OD (in)	2 3/8	String Drift Min (in)	1.901	Comment	
----------------------------	------	-------------------	--	----------------------------	-------	-----------------------	-------	---------	--

Tubing Components

Jts	Item Desc	OD (in)	ID (in)	Wt (lbs/ft)	Grade	Top Thread	Top (ftKB)	Len (ft)	P(collapse) (psi)	P(burst) (psi)
1	Tubing	2 3/8	1.995	4.70	J-55		0.0	31.50	8,100.0	7,700.0

Perforation Detail Report

API	300392043200	Field Name	BASIN DK	Area	EAST	County	RIO ARRIBA	State/Province	NEW MEXICO	Operator		License No	
KB Elev (ft)	6583.50	Ground Elev (ft)	6572.00	KB-CF (ft)	11.50	KB-TH (ft)	11.50	PBTD (ftKB)	7,717.0	Spud Date	11/2/71	Rig Release Date	



Perforations: At 7,460.0-7,472.0 on 11/25/71 6:45:00 AM

Date	11/25/71 6:45:00 AM	Top (ftKB)	7,460.0	Bottom (ftKB)	7,472.0	Shot Density (shots/ft)	0.6	Phasing (°)	
Perf Comp	Type	Gun Size (in)	Carrier Make	Carrier Description	Charge Type	Charge Make	Charge Sz (g)		
	Jet								
	perforation								
Over/Under Bal	Over/Under Pres (psi)	P (init surf)	P (final surf)	Fluid Type	Dens Fluids (lb/gal)	FL MD before (ftKB)	FL MD after (ftKB)		

Perforation Status

Date	Status	Com
	Open	

Perforations: At 7,490.0-7,502.0 on 11/25/71 7:30:00 AM

Date	11/25/71 7:30:00 AM	Top (ftKB)	7,490.0	Bottom (ftKB)	7,502.0	Shot Density (shots/ft)	0.6	Phasing (°)	
Perf Comp	Type	Gun Size (in)	Carrier Make	Carrier Description	Charge Type	Charge Make	Charge Sz (g)		
	Jet								
	perforation								
Over/Under Bal	Over/Under Pres (psi)	P (init surf)	P (final surf)	Fluid Type	Dens Fluids (lb/gal)	FL MD before (ftKB)	FL MD after (ftKB)		

Perforation Status

Date	Status	Com
	Open	

Perforations: At 7,582.0-7,594.0 on 11/25/71 8:15:00 AM

Date	11/25/71 8:15:00 AM	Top (ftKB)	7,582.0	Bottom (ftKB)	7,594.0	Shot Density (shots/ft)	0.6	Phasing (°)	
Perf Comp	Type	Gun Size (in)	Carrier Make	Carrier Description	Charge Type	Charge Make	Charge Sz (g)		
	Jet								
	perforation								
Over/Under Bal	Over/Under Pres (psi)	P (init surf)	P (final surf)	Fluid Type	Dens Fluids (lb/gal)	FL MD before (ftKB)	FL MD after (ftKB)		

Perforation Status

Date	Status	Com
	Open	

Perforations: At 7,622.0-7,630.0 on 11/25/71 9:30:00 AM

Date	11/25/71 9:30:00 AM	Top (ftKB)	7,622.0	Bottom (ftKB)	7,630.0	Shot Density (shots/ft)	0.9	Phasing (°)	
Perf Comp	Type	Gun Size (in)	Carrier Make	Carrier Description	Charge Type	Charge Make	Charge Sz (g)		
	Jet								
	perforation								
Over/Under Bal	Over/Under Pres (psi)	P (init surf)	P (final surf)	Fluid Type	Dens Fluids (lb/gal)	FL MD before (ftKB)	FL MD after (ftKB)		

Perforation Status

Date	Status	Com
	Open	

Perforations: At 7,640.0-7,648.0 on 11/25/71 10:15:00 AM

Date	11/25/71 10:15:00 AM	Top (ftKB)	7,640.0	Bottom (ftKB)	7,648.0	Shot Density (shots/ft)	0.9	Phasing (°)	
Perf Comp	Type	Gun Size (in)	Carrier Make	Carrier Description	Charge Type	Charge Make	Charge Sz (g)		
	Jet								
	perforation								
Over/Under Bal	Over/Under Pres (psi)	P (init surf)	P (final surf)	Fluid Type	Dens Fluids (lb/gal)	FL MD before (ftKB)	FL MD after (ftKB)		

Perforation Status

Date	Status	Com
	Open	

Perforations: At 7,662.0-7,670.0 on 11/25/71 11:00:00 AM

Date	11/25/71 11:00:00 AM	Top (ftKB)	7,662.0	Bottom (ftKB)	7,670.0	Shot Density (shots/ft)	0.9	Phasing (°)	
Perf Comp	Type	Gun Size (in)	Carrier Make	Carrier Description	Charge Type	Charge Make	Charge Sz (g)		
	Jet								
	perforation								
Over/Under Bal	Over/Under Pres (psi)	P (init surf)	P (final surf)	Fluid Type	Dens Fluids (lb/gal)	FL MD before (ftKB)	FL MD after (ftKB)		

Perforation Status

Date	Status	Com
	Open	

Stimulation Summary

API	300392043200	Field Name	BASIN DK	Area	EAST	County	RIO ARRIBA	State/Province	NEW MEXICO	Operator		License No	
KB Elev (ft)	6583.50	Ground Elev (ft)	6572.00	KB-CF (ft)	11.50	KB-Tubing Head Distance (ft)	11.50	Plug Back Total Depth (ftKB)	7,717.0	Spud Date	11/2/71	Rig Release Date	

Stims/Treats: Hydraulic propped frac on 11/26/71 8:00:00 AM

Type	Hole	Zone	Stim/Treat Company	P(si-pre) (psi)	P(si-post) (psi)
Hydraulic propped frac	Main Hole				
Diversion Method	Diversion Contractor	Propanant In Formation (lb)	Propanant In Wellbore (lb)		

Stim/Treat Fluids

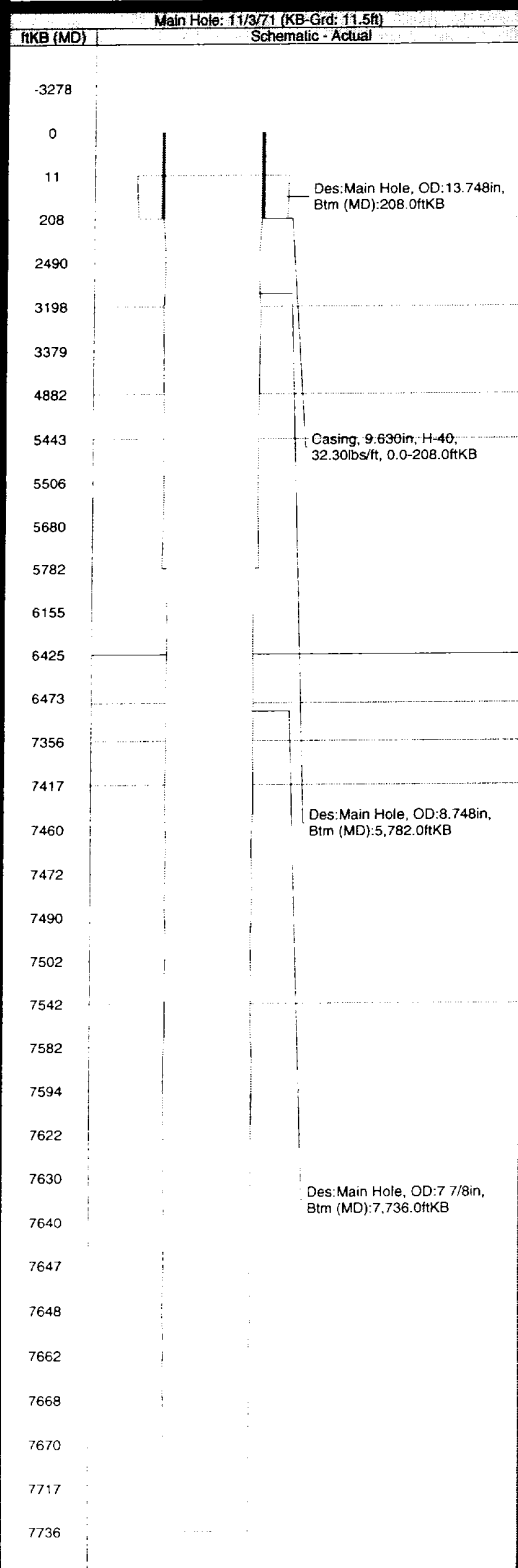
Fluid Name	Fluid Type	Dens Fluid (Filter Size (in) Method	Description	Comment
------------	------------	-------------------------------------	-------------	---------

Stim/Treat Stages: 1, 1st Stage

Stage No	Stage Type	Top (ftKB)	Bottom (ftKB)	Q(init fld) (gpm)	Q(fin fld) (gpm)	V(pumped) (bbl)	V(recov) (bbl)
1	1st Stage	7,460.0	7,670.0				
Breakdown Pressure (psi)	Tubing Pressure Start (psi)	Tubing Pressure End (psi)	Casing Pressure Start (psi)	Casing Pressure End (psi)			

Casing, Liner and Cement Report

API	300392043200	Field Name	BASIN DK	Area	EAST	County	RIO ARRIBA	State/Province	NEW MEXICO	Operator		License No	
KB Elev (ft)	6583.50	Ground Elev (ft)	6572.00	Casing Flange Elev (ft)	6572.00	Spud Date	11/2/71						
Casing Description	Surface Casing	Run Date	11/3/71 4:00:00 AM	Pull Date		Hole	Main Hole	Btm (ftKB)	208.0	Run Job			

Casing Summary
Casing Components

Jts	Item Desc	OD (in)	ID (in)	Wt (lbs/ft)	Grade	Top (ftKB)	Btm (ftKB)	Len (ft)
6	Casing	9.63	9.000	32.30	H-40	0.0	208.0	208.00

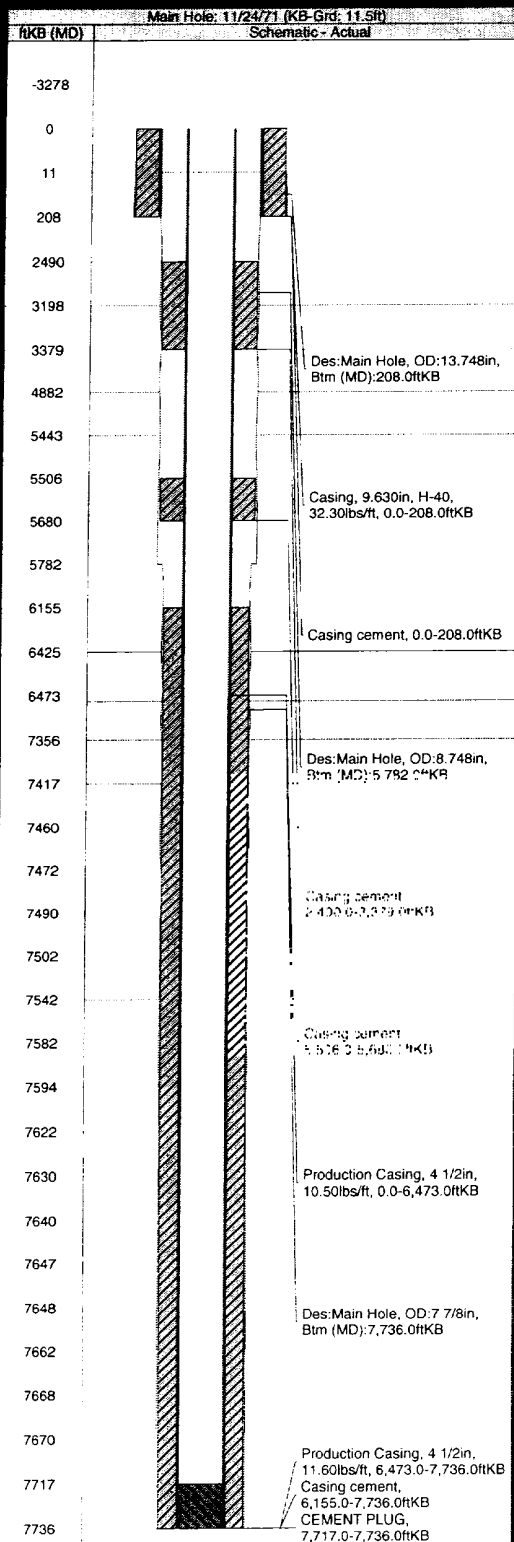
Cement Summary

Cement: <na>, casing, 11/3/71 6:00:00 AM

Start Date	11/3/71 6:00:00 AM	End Date		Cementing Company			
Evaluation Method	Cement Evaluation Results	Comment					
Cement Stage: 1, 0.0-208.0							
Top (ftKB)	Bottom (ftKB)	P(final) (psi)	Plug F/P(bump) (psi)	Float F/P(held) (psi)	Cmnt Rtrn (bbl)		
0.0	208.0			No			
Q(start) (bbl/min)	Q(end) (bbl/min)	Q(avg) (bbl/min)	Recip?	Stroke (ft)	Recip R Rotated?	Pipe RPM (rpm)	
Type	Amt (sacks)	Class	Density (lb/gal)	Mix Wat Ratio (gal/sack)	Yield (ft ³ /sack)	V (bbl)	Excess (%)
	190						

Casing, Liner and Cement Report

API	300392043200	Field Name	BASIN DK	Area	EAST	County	RIO ARRIBA	State/Province	NEW MEXICO	Operator		License No	
KB Elev (ft)	6583.50	Ground Elev (ft)	6572.00	Casing Flange Elev (ft)	6572.00	Spud Date	11/2/71						
Casing Description	Production Casing	Run Date	11/24/71 9:30:00 AM	Pull Date		Hole	Main Hole	Btm (ftKB)	7,736.0	Run Job			

Casing Summary
Casing Components

Jts	Item Desc	OD (in)	ID (in)	Wt (lbs/ft)	Grade	Top (ftKB)	Btm (ftKB)	Len (ft)
209	Production Casing	4 1/2	4.050	10.50		0.06	473.0	6473.00
39	Production Casing	4 1/2	4.000	11.60		6,473.07	7,736.0	1263.00

Cement Summary

Cement: <na>, casing, 11/24/71 2:30:00 AM

Start Date	11/24/71 2:30:00 AM	End Date		Cementing Company	
Evaluation Method	Cement Evaluation Results	Comment			
		1 stage-btm @ 7736', TOC @ 6155 by Est. (200 sks)			

Cement Stage: 1, 6,155.0-7,736.0

Top (ftKB)	Bottom (ftKB)	P(final) (psi)	Plug F/P(bump) (psi)	Float F/P(heid) (psi)	Crmt Rtrn (bbl)
6,155.0	7,736.0			No	
Q(start) (bbl/min)	Q(end) (bbl/min)	Q(avg) (bbl/min)	Recip?	Stroke (ft)	Recip R/Rotated?
					Pipe RPM (rpm)
Type	Amt (sacks)	Class	Density (lb/gal)	Mix Wat Ratio (gal/sack)	Yield (ft³/sack)
	200				V (bbl)
					Excess (%)

Cement: <na>, casing, 11/24/71 4:15:00 AM

Start Date	11/24/71 4:15:00 AM	End Date		Cementing Company	
Evaluation Method	Cement Evaluation Results	Comment			
		2nd stage - btm @ 5680', TOC @ 5506' by Est. using 7 bbls or 22 sks, lost circulation with 7 bbls. displaced. (145 sks pumped)			

Cement Stage: 1, 5,506.0-5,680.0

Top (ftKB)	Bottom (ftKB)	P(final) (psi)	Plug F/P(bump) (psi)	Float F/P(heid) (psi)	Crmt Rtrn (bbl)
5,506.0	5,680.0			No	
Q(start) (bbl/min)	Q(end) (bbl/min)	Q(avg) (bbl/min)	Recip?	Stroke (ft)	Recip R/Rotated?
					Pipe RPM (rpm)
Type	Amt (sacks)	Class	Density (lb/gal)	Mix Wat Ratio (gal/sack)	Yield (ft³/sack)
	145				V (bbl)
					Excess (%)

Cement: <na>, casing, 11/24/71 7:10:00 AM

Start Date	11/24/71 7:10:00 AM	End Date		Cementing Company	
Evaluation Method	Cement Evaluation Results	Comment			
		3rd stage - btm @ 3379', TOC @ 2490' by TS. (160 sks)			

Cement Stage: 1, 2,490.0-3,379.0

Top (ftKB)	Bottom (ftKB)	P(final) (psi)	Plug F/P(bump) (psi)	Float F/P(heid) (psi)	Crmt Rtrn (bbl)
2,490.0	3,379.0			No	
Q(start) (bbl/min)	Q(end) (bbl/min)	Q(avg) (bbl/min)	Recip?	Stroke (ft)	Recip R/Rotated?
					Pipe RPM (rpm)
Type	Amt (sacks)	Class	Density (lb/gal)	Mix Wat Ratio (gal/sack)	Yield (ft³/sack)
					V (bbl)
					Excess (%)

Casing String Summary

API	300392043200	Field Name	BASIN DK	Area	EAST	County	RIO ARRIBA	State/Province	NEW MEXICO	Operator		License No	
KB Elev (ft)	6583.50	Ground Elev (ft)	6572.00	Casing Flange Elev (ft)	6572.00	Spud Date	11/2/71	Rig Release Date					

Casing Strings: Surface Casing, 208.0

Bottom or Set Depth (ftKB)	208.0	Set Tension (lbf)		String Max Nominal OD (in)	9.63	String Drift Min (in)		Centralizers		Scratchers			
Jts	Item Desc	OD (in)	ID (in)	Wt (lbs/ft)	Grade	Top Thread	Top (ftKB)	Btm (ftKB)	Len (ft)	Burst Pres. (psi)	Collapse Pres. (psi)		
6	Casing	9.63	9.000	32.30	H-40	ST&C	0.0	208.0	208.00				

Casing Strings: Production Casing, 7,736.0

Bottom or Set Depth (ftKB)	7,736.0	Set Tension (lbf)		String Max Nominal OD (in)	4 1/2	String Drift Min (in)		Centralizers		Scratchers			
Jts	Item Desc	OD (in)	ID (in)	Wt (lbs/ft)	Grade	Top Thread	Top (ftKB)	Btm (ftKB)	Len (ft)	Burst Pres. (psi)	Collapse Pres. (psi)		
209	Production Casing	4 1/2	4.050	10.50			0.0	6,473.0	6473.00				
39	Production Casing	4 1/2	4.000	11.60			6,473.0	7,736.0	1263.00				

Cement Summary

API	300392043200	Field Name	BASIN DK	Area	EAST	Operator		County	RIO ARRIBA	State/Province	NEW MEXICO
KB Elev (ft)	6583.50	Ground Elev (ft)	6572.00	Casing Flange Elev (ft)	6572.00	KB-Ground Distance (ft)	11.50	KB-Casing Flange Distance (ft)	11.50	Spud Date	11/2/71

Cement: <na>, casing, 11/3/71 6:00:00 AM

Cement Objective					Start Date		End Date		
					11/3/71 6:00:00 AM				
Cement Stage: 1, 0.0-208.0									
Top (ftKB)		Bottom (ftKB)		Q(start) (bbl/min)	Q(end) (bbl/min)	Q(ave) (bbl/min)	Final Pump Pressure (psi)	Pipe Reciprocated?	Recip. Stroke Length (ft)
0.0		208.0							
Rotated?	Pipe RPM (rpm)	Top Plug?	Bottom Plug?	P(bump) (psi)	Cement Volume Return (bbl)		Top measurement method		Drill out dia (in)
		No	No						
Fluid Type			Fluid Descr		Amount (sacks)	Class	V (bbl)	Yield (ft³/sack)	Mix Wat Ratio (gal/sac)
					190				
Free Water (%)			Density (lb/gal)		Plastic Viscosity (cp)		Thickening Time (hrs)		1st Compressive Strength (psi)

Cement: <na>, casing, 11/24/71 2:30:00 AM

Cement Objective					Start Date		End Date		
					11/24/71 2:30:00 AM				
Cement Stage: 1, 6,155.0-7,736.0									
Top (ftKB)		Bottom (ftKB)		Q(start) (bbl/min)	Q(end) (bbl/min)	Q(ave) (bbl/min)	Final Pump Pressure (psi)	Pipe Reciprocated?	Recip. Stroke Length (ft)
6,155.0		7,736.0							
Rotated?	Pipe RPM (rpm)	Top Plug?	Bottom Plug?	P(bump) (psi)	Cement Volume Return (bbl)		Top measurement method		Drill out dia (in)
		No	No						
Fluid Type		Fluid Descr			Amount (sacks)	Class	V (bbl)	Yield (ft³/sack)	Mix Wat Ratio (gal/sac)
					200				
Free Water (%)		Density (lb/gal)		Plastic Viscosity (cp)		Thickening Time (hrs)		1st Compressive Strength (psi)	

Cement: <na>, casing, 11/24/71 4:15:00 AM

Cement Objective					Start Date		End Date	
					11/24/71 4:15:00 AM			
Cement Stage: 1, 5,506.0-5,680.0								
Top (ftKB)	Bottom (ftKB)		Q(start) (bbl/min)	Q(end) (bbl/min)	Q(ave) (bbl/min)	Final Pump Pressure (psi)	Pipe Reciprocated?	Recip. Stroke Length (ft)
5,506.0	5,680.0							
Rotated?	Pipe RPM (rpm)	Top Plug?	Bottom Plug?	P(bump) (psi)	Cement Volume Return (bbl)	Top measurement method		Drill out dia (in)
		No	No					
Fluid Type	Fluid Descr			Amount (sacks)	Class	V (bbl)	Yield (ft³/sack)	Mix Wat Ratio (gal/sack)
				145				
Free Water (%)		Density (lb/gal)	Plastic Viscosity (cp)		Thickening Time (hrs)		1st Compressive Strength (psi)	

Cement: CEMENT PLUG, plug, 11/24/71 7:10:00 AM

Cement Objective					Start Date		End Date		
					11/24/71 7:10:00 AM				
Cement Stage: 1, 7,717.0-7,736.0									
Top (ftKB)	Bottom (ftKB)		Q(start) (bbl/min)	Q(end) (bbl/min)	Q(ave) (bbl/min)	Final Pump Pressure (psi)	Pipe Reciprocated?	Recip. Stroke	Length (ft)
7,717.0	7,736.0								
Rotated?	Pipe RPM (rpm)	Top Plug?	Bottom Plug?	P(bump) (psi)	Cement Volume Return (bbl)	Top measurement method		Drill out dia (in)	
		No	No						
Fluid Type	Fluid Descr			Amount (sacks)	Class	V (bbl)	Yield (ft³/sack)	Mix Wat Ratio (gal/sac)	
CEMENT PLUG									
Free Water (%)		Density (lb/gal)	Plastic Viscosity (cp)		Thickening Time (hrs)		1st Compressive Strength (psi)		

Cement: <na>, casing, 11/24/71 7:10:00 AM

Cement Objective				Start Date				End Date						
				11/24/71 7:10:00 AM										
Cement Stage: 1, 2,490.0-3,379.0														
Top (ftKB)		Bottom (ftKB)		Q(start) (bbl/min)		Q(end) (bbl/min)		Q(ave) (bbl/min)		Final Pump Pressure (psi)		Pipe Reciprocated?	Recip. Stroke	Length (ft)
2,490.0		3,379.0												
Rotated?	Pipe RPM (rpm)		Top Plug?		Bottom Plug?		P(bump) (psi)		Cement Volume Return (bbl)		Top measurement method		Drill out dia (in)	
			No		No									

Daily Summary

API	Field Name	Area	County	State/Province	Operator	License No
300392043200	BASIN DK	EAST	RIO ARRIBA	NEW MEXICO		
KB Elev (ft)	Ground Elev (ft)	KB-CF (ft)	KB-Tubing Head Distance (ft)	Plug Back Total Depth (ftKB)	Spud Date	Rig Release Date
6583.50	6572.00	11.50	11.50	7,717.0	11/2/71	

Start	Ops This Rpt	Day Total	Cum. To Date
5/4/00	MOVE RIG AN SPOT.	0.00	0.00
5/5/00	RIG UP PULLING UNIT, SPOT AN RIG U P EQUIPMENT. CSG PRESS. 120# TBG. PRESS. 95#. BLOW WELL DOWN, KILL WELL 20 BBLS OF 1% KCL. NDWH, NUBOP. POOH WITH TBG. TALLY OUT. RIH WITH CSG SCRAPER TO 5700'. POOH WITH TBG. AN SCRAPER. RU WIRELINE, RIH WITH COMP PLUG. TO 5601'. SET PLUG. POOH WITH SETTING TOOL. LOAD HOLE, TEST TO 3000#, HELD OK. RIH WITH LOGGING TOOL TO 5600'. TRY TO CALIBRATE LOGGING TOOL. WOULD NOT WORK. POOH WITH LOGGING TOOL. SECURE WELL. SDFN	0.00	0.00
5/8/00	0# CSG PRESS. RU WIRELINE UNIT. RIH WITH LOGGING TOOL. RUN CBL LOG FROM 5600' TO 4400'. POOH WITH LOGGING TOOL. SENT LOGS TO ENG. RD WIRELINE UNIT SECURE WELL SDFN	0.00	0.00
5/9/00	STAND BY FOR FRAC.	0.00	0.00
5/10/00	CSG. PRESS. 0# OPEN WELL, RU WIRELINE UNIT, RIH WITH PERF GUN. PERF. POINT LOOKOUT FORMATION FOR 1ST STAGE, AS FOLLOWED: 5563',59',55',51',28',24',20',02',5498',94',90',86',82',78',74',7 0',66',62',58',54',50',46',42', 23 PERF POINTS , 2 -SHOTS PER FOOT. POOH WITH PERF GUN. RD WIRELINE UNIT. SECURE WELL. SDFN.	0.00	0.00
5/11/00	0# CSG PRESS. RU FRAC UNIT. SAFETY MEETING. TEST LINES TO 5000#, SET POP OFF. LOAD HOLE WITH 75 BBLS OF 1% KCL. 12BPM/200# START ACID, PUMP 1500 GALS. 15% HCl. DROP 92 BALL SEALERS, GOT SOME GREAT BALL ACTION, PRESS. UP TO 3800# BROKE DOWN TO 850#, PRESS. UP TO 2500# BROKE DOWN TO 700#, AVG. BPM ON ACID WAS 9-10 BBLS. SHUT DOWN ISDP 400#. RD ACID UNIT, RD ISOLATION TOOL, RU WIRELINE RIH WITH JUNK BASKET, RECOVERED 91 BALL SEALERS, 46 HITS. RD WIRELINE UNIT, RU ISOLATION TOOL. RU FRAC UNIT. FRAC WELL, 20 BBLS TO LOAD, START PAD HAD A BREAK AT 45BBLS PM. EST. RATE AT 65.8 BPM AT 1980#. START 1/2# SAND, AVG. PRESS. 1970# AT 65.5BPM, 1# SAND AVG PRESS. 1990# AT 65.8BPM. ISDP 600# IN FIFTEEN 550# SHUT WELL IN. RD FRAC UNIT, RD ISOLATION TOOL. RU WIRELINE UNIT. RIH WITH COMP. PLUG. WELL FLOWING. PLUG TO 53 60'. GOT HUNG UP IN SAND, SET PLUG. POOH WITH SETTING TOOL. RD WIRELINE, FLOW BACK WELL. PLUG NOT SET. SHUT WELL IN. SDFN.	0.00	0.00
5/12/00	CSG. PRESS. 370# RU FLOW LINE AN FLOW BACK TNK. FLOW BACK TO TNK. FLOW BACK 200BBLS. OF FLUID. FLOWING PRESS. DOWN TO 20 #. RIH WITH METAL MUNCHER, AN TBG. TAG UP ON PLUG AT 3265'. HAUL IN AN RIG UP AIR UNIT. UNLOAD WELL. TOTAL FLUIDS RECOVERED 300BBLS. SECURE WELL SDFN.	0.00	0.00
5/15/00	CSG PRESS. 110# BLOW WELL DOWN, RIH WITH TBG. AN MILL. TAG UP 3250'. RU POWER SWIVEL, RIH WITH TBG. TAG UP 3265'. RU AIR UNIT, WOULD NOT CIRCALATE. MILL PLUGGED. RD AIR UNIT, POOH WITH TBG. AN MILL. MILL PLUGGED WITH SAND AN MUD. RIH WITH MILL AN TBG. TAG FILL AT 3265', PU TBG. TO 3252'. RU AIR UNIT, CIRCALATE HOLE, HOLE CLEAN, SHUT DOWN AIR, RU POWER SWIVEL, RU AIR UNIT, LOST CIRCALATION, TBG. STUCK. COULD NOT GET TBG. TO MOVE. SECURE WELL SDFN.	0.00	0.00
5/16/00	CSG PRESS. 25#. BLOW WELL DOWN, RU WIRELINE UNIT, FREEPOINT TBG. TAG FILL IN TBG, 3233'. , TBG. FREE TO THIS POINT. POOH WITH FREEPOINT TOOL, RIH WITH CHEMICAL CUTTER, CUT TBG AT 3223'. CUTTER HUNG UP, WORK FREE. POOH WITH CUTTER. RD WIRELINE UNIT. POOH WITH 106 JOINTS OF TBG. RIH WITH WASH PIPE SHOE, 1 JOINT OF WASH PIPE, JARS, 6-DRILL COLLARS, AN 1JOINT OF TBG. SECURE WELL SDFN	0.00	0.00

Daily Summary

API	Field Name	Area	County	State/Province	Operator	License No
300392043200	BASIN DK	EAST	RIO ARRIBA	NEW MEXICO		
KB Elev (ft)	Ground Elev (ft)	KB-CF (ft)	KB-Tubing Head Distance (ft)	Plug Back Total Depth (ftKB)	Spud Date	Rig Release Date
6583.50	6572.00	11.50	11.50	7,717.0	11/2/71	

Start	Ops This Rpt	Day Total	Cum. To Date
5/17/00	CSG. PRSS. 0# OPEN WELL , FINISH RIH WITH TBG. TAG UP 3220'. (TAG UP HIGHER THAN PREV. TAG.) RU POWER SWIVEL. RU AIR UNIT. DRILL OUT AN CLEAN OUT TO 3355'. HAD TO WORK SHOE ON 1ST BRIDGE AT 3220'. , ABOUT 5' LONG. RD AIR UNIT, RD POWER SWIVEL. PUT TO 2355' SECURE WELL SDFN.	0.00	0.00
5/18/00	CSG PRESS 15#, BLOW WELL DOWN, RIH WITH TBG. TAG FISH AT 3250'. RU AIR UNIT CLEAN OFF TOP OF FISH. RD AIR UNIT . POOH WITH TBG, DRILL COLLARS AN WASH PIPE. RIH WITH OVERSHOT, JARS, DRILL COLLARS AN TBG. TAG UP ONFISH AT 3250'. LATCH ON TO FISH , JAR FREE, POOH WITH TBG. DRILL COLLARS , JARS , AN FISH. (1 1/2 JOINTS OF TBG, CHANGE OVER, AN METAL MUNCHER.) RIH WITH WASH PIPE SHOE, WASH PIPE, AN TBG. TAG UP AT 3255'. PU TBG. 1 STAND. SECURE WELL SDFN.	0.00	0.00
5/19/00	CSG. PRESS. 10#, BLOW WELL DOWN. RIH WITH TBG. TAG UP AT 3255'. RU AIR UNIT, UNLOAD WELL, DRILL OUT AN CLEAN OUT TO 3260', DRILL THUR. RD POWER SWIVEL, RIH WITH TBG. TAG UP 4322' TAG UP, RU POWER SWIVEL, UNLOAD WELL. DRILL OUT AN CLEAN OUT TO 4329', DROP THUR. RD POWER SWIVEL, RIH WITH TBG. TAG UP 4655'. RU POWER SWIVEL, UNLOAD WELL, DRILL OUT AN CLEAN OUT TO 4658', DROP THUR. RD POWER SWIVEL, RIH WITH TBG. TAG UP 4717'. RU POWER SWIVEL, UNLOAD WELL. RD POWER SWIVEL, RD AIR UNIT , PU TBG. TO 4000'. SECURE WELL SDFN.	0.00	0.00
5/22/00	CSG. PRESS. 130# BLOW WELL DOWN, RIH WITH TBG. TO 4717, TAG UP. RU AIR UNIT, UNLOAD WELL, RECOVERED 20 BBLs OF OIL, AN 80 BBLs OF H2O, RU SWIVEL, DRILL AN CLEAN OUT FILL TO 5180'. HIT LOT OF BRIDGES GOING IN. FILL RETURN IS FRAC SAND. PU TBG. 10 STANDS. SECURE WELL SDFN	0.00	0.00
5/23/00	CSG PRESS. 500# , BLOW WELL DOWN. RIH WITH TBG. TAG UP 4740'. RU AIR UNIT, START CLEAN OUT, CLEAN OUT TO 5360'. TAG UP ON COMP. PLUG. UNLOAD WELL. RECOVERED 100 BBLs OF FLUID. RD AIR UNIT, POOH WITH 116 STANDS, DRILL COLLARS AN WASH PIPE WITH SHOE. RIH WITH PACKERAN 20 STANDS OF TBG. SECURE WELL SDFN.	0.00	0.00
5/24/00	CSG AN TBG. PRESS. 60#, BLOW WELL DOWN. RIH WITH TBG. TO 5343'. SET (RETRIEVAMATIC) PACKER AN TEST PLUG TO 3000#. HELD OK. RELEASE AN MOVE PACKER . TEST CSG , FOUND LEAK BETWEEN 4375' > 4406'. 3BPM/ 100#. POOH WITH TBG. AN PACKER. SECURE WELL SDFN.	0.00	0.00
5/25/00	CSG. PRESS. 0# RU WIRELINE UNIT, RIH WITH PERF GUN . SHOT 4 SQUEEZE HOLES AT 5190' AN AT 5015'. POOH WITH PERF. GUN. RD WIRELINE. RIH WITH 4.5" CEMENT RETAINER AN 83 STANDS OF TBG. SET RETAINER AT 5185'. SECURE WELL SDFN.	0.00	0.00

Daily Summary

API	Field Name	Area	County	State/Province	Operator	License No
300392043200	BASIN DK	EAST	RIO ARRIBA	NEW MEXICO		
KB Elev (ft)	Ground Elev (ft)	KB-CF (ft)	KB-Tubing Head Distance (ft)	Plug Back Total Depth (ftKB)	Spud Date	Rig Release Date
6583.50	6572.00	11.50	11.50	7,717.0	11/2/71	

Start	Ops This Rpt	Day Total	Cum. To Date
5/26/00	RU CEMENT PUMP UNIT, TEST LINES TO 3000#. EST. INJECTION RATE, 1.8BPM/1529#. START CEMENT, PUMP 11.7 BBLS OF CEMENT, DISPLACE WITH 20 BBLS, STING OUT OF RETAINER, 1300 # UNDER RETAINER. RD CEMENT UNIT, POOH WITH SETTING TOOL. RIH WITH PACKER, FULLBORE, TO 4811'. SET PACKER. RU CEMENT UNIT, TRY TO PUMP INTO SQUEEZE HOLES AT 5015', PRESS UP TO 2000#, COULDN'T PUMP INTO HOLES. RD CEMENT UNIT. RELEASE PACKER POOH WITH PACKER. RU WIRELINE UNIT, RIH WITH PERF GUN TO 4860', SHOT 4 SQUEEZE HOLE. POOH WITH PERF GUN. RD WIRELINE UNIT. RIH WITH CEMENT RETAINER TO 4809'. SET. RU CEMENT UNIT, TEST LINES TO 3000#. EST. RATE AT 1.7BPM / 750#, PUMP 85 SACKS OF CEMENT, PRESS DOWN TO 484# DURING CEMENT PAD, DISPLACE WITH 18BBLS, PRESS UP TO 1200#. STING OUT OF RETAINER. 820# UNDER RETAINER. RD CEMENT UNIT. POOH WITH SETTING TOOL. RIH WITH PACKER, TO 3970'. SET. LOAD BACK SIDE, 500#. TEST LINE TO 3000#. EST. RATE 1.7BPM/ 95#, PUMP 30 BBLS OF CEMENT WELL ON VACUM, START DISPLACE, DISPLACE WITH 18 BBLS. PESS COMING UP TO 30#. HESITATE LAST 3 BBLS OF DISPL. PRESS UP TO 200# RD CEMENT UNIT. SECURE WELL SDFN	0.00	0.00
5/30/00	CSG. PRESS. 0# OPEN WELL, RELEASE PACKER. POOH WITH TBG, AN PACKER. RIH WITH BIT, DRILL COLLARS AN TBG. TAG CEMENT AT 4282'. RU POWER SWIVEL, EST. CIRCULATION. DRILL OUT CEMENT TO 4390'. CEMENT SET UP REAL HARD. SIMS TO BE HOLLOW. TEST HOLE, HOLE DID NOT TEST. 1 BBL A MIN. AT 700# RD SWIVEL, POOH WITH TBG. AN DRILL BIT. SECURE WELL SDFN.	0.00	0.00
5/31/00	CSG PRESS. 0# RIH WITH FULL BORE PACKER AN TBG TO 4081'. SET PACKER. RU CEMENT UNIT, LOAD BACKSIDE AN PRESS. UP TO 500#. TEST LINES TO 3000#. EST. RATE. 2BPM/960#. START CEMENT. PUMP 38 BBLS OF CEMENT. DISPLACE WITH 14 BBLS OF WATER, PRESS. UP TO 2000#. HAD TO REVERSE CIRCULATE 3BBLS. OUT. PU TBG 2JOINTS. PRESS BACK ON TO 2000# WITH IN. 2BBLS OF DISPLACEMENT. SHUT TBG IN WITH 1000# ON IT. RD CEMENT UNIT. SECURE WELL SDFN	0.00	0.00
6/1/00	TBG. PRESS. 30# BLOW WELL DOWN, RELEASE PACKER AN POOH WITH TBG. AN PACKER. RIH WITH BIT, DRILL COLLARS AN TBG. TAG UP CEMENT AT 3999'. RU SWIVEL, DRILL OUT TO 4064'. DRILL AN CLEAN OUT 65'. PU TBG. TO 4031'. SECURE WELL SDFN.	0.00	0.00
6/2/00	CSG. PRESS 0# RIH WITH TBG. TAG CEMENT 4064'. DRILL AN CLEAN OUT CEMENT TO 4245'. CEMENT STILL NOT SET UP TO GOOD. PU TBG. 5 STANDS. SECURE WELL SDFN.	0.00	0.00
6/5/00	0# PRESS. CSG. RIH WITH TBG. TAG UP ON CEMENT 4245'. RU POWER SWIVEL, DRILL OUT CEMENT 4360'. TEST SQUEEZE TO 2000# HELD GOOD. TEST FOR 30 MINS. RD POWER SWIVEL, RIH WITH TBG. TAG UP 4800'. DRILL OUT CEMENT RETAINER, CHASE TO 4815'. CIRCULATE CLEAN. PULL UP TBG TO 4750'. SECURE WELL SDFN	0.00	0.00
6/6/00	0# PRESS. CSG. RIH WITH TBG. TAG UP 4815' DRILL OUT AN CLEAN OUT TO 5185', TAG UP ON RETAINER. DRILL OUT RETAINER. DRILL OUT OF CEMENT AT 5200'. CLEAN OUT TO 5360' TAG UP ON COMP. PLUG. CIRCULATE HOLE. PULL OUT OH HOLE WITH 15 STANDS. SECURE WELL SDFN	0.00	0.00
6/7/00	CSG. PRESS. 0# POOH WITH TBG. AN DRILL COLLARS AN BIT. LOAD CSG, TEST TO 3000# HELD OK. RU WIRELINE UNIT, RUN CBL FROM 5366' TO 3500'. RD WIRELINE, SEND LOG TO ENG. SECURE WELL SDFN.	0.00	0.00
6/8/00	RIH W/3 7/8" METAL MUNCHER ON 2 3/8" WORK STING. UNLOADED HOLE. DRILLED OUT COMPOSITE PLUG @ 5360'. CLEANED OUT TO 5390'. PUH TO 5079'. SWION.	0.00	0.00

Daily Summary

API	Field Name	Area	County	State/Province	Operator	License No
300392043200	BASIN DK	EAST	RIO ARRIBA	NEW MEXICO		
KB Elev (ft)	Ground Elev (ft)	KB-CF (ft)	KB-Tubing Head Distance (ft)	Plug Back Total Depth (ftKB)	Spud Date	Rig Release Date
6583.50	6572.00	11.50	11.50	7,717.0	11/2/71	

Start	Ops This Rpt	Day Total	Cum. To Date
6/9/00	RIH W/ 3 7/8" METAL MUNCHER. TAGGED @ 5390'. CLEANED OUT TO 5575'. WELL WOULD NOT FLOW. TRIED TO LOAD HOLE. WELL WENT ON VACUUM. SWION.	0.00	0.00
6/12/00	POOH W/ METAL MUNCHER AND TBG. SWI AND SECURED. PREP TO FRAC.	0.00	0.00
6/13/00	HELD SAFETY MEETING. RU BJ SERVICES. TESTED LINES TO 3000 LB AND SET POP OFF @ 2920 LB. FRACED POINT LOOKOUT W/ 3585 BBL Slick WATER AND 61,000 LB 20/40 BRADY SAND. AVG RATE 58 BPM - AVG PRES 2784 PSI - ISIP 0 PSI. SWION.	0.00	0.00
6/14/00	HELD SAFETY MEETING. RU BLUEJET. RIH W/ 4 1/2" COMPOSITE PLUG - SET @ 5375'. POOH W/ TOOLS. TRIED TO TEST COMPOSITE PLUG - WOULDN'T TEST. RD BLUEJET. RIH W/ TBG AND PKR TO 5365'. TESTED COMPOSITE PLUG TO 3000 PSI - HELD OK. MUH W/ PKR TO 5340' - FOUND HOLE IN CSG @ 5340' - 5308' - 4700' - 4375'. PUMPED INTO HOLE IN CSG @ 3 BPM @ 900 LB. MUH W/ PKR - SET @ 4330' - CSG HELD @ 2000' - NO LEAK OFF. POOH W/ TBG AND PKR. SWION.	0.00	0.00
6/15/00	HELD SAFETY MEETING. RU BLUEJET. RIH W/ PERFORATING GUN - PERFORATED THE MENELEE FORMATION @ 5350' - 46' - 42' - 5298' - 94' - 5284' - 80' - 76' - 5228' - 5197' - 93' - 89' - 85' - 67' - 63' - 59' - 55' - 51' - 47' - 43' - 39' - 12' - 08' - 5097' - 93' - 60' - 56' - 50' - 5052' - W/ 2 SPF. TOTAL OF 56 HOLES. PERFORATED THE CLIFHOUSE FORMATION @ 4978' - 74' - 60' - 56' - 52' - 38' - 34' - 30' - 26' - 05' - 01' - 4897' - 93' - 89' - 4885' - W/ 2 SPF. TOTAL OF 30 HOLES. POOH W/ TOOLS. RIH W/ TBG & TREATING PKR. SET PKR @ 4715'. RU BJ SERVICES. TESTED LINES TO 3000 PSI AND SET POP OFF @ 2920 ACIDIZED & BALLED OUT THE MENELEE & CLIFHOUSE FORMATION. PUMPED 3000 GALS 15% HCL ACID @ 5.5 BPM. DROPPED 2 BALL SEALERS PER 1 BBL. TOTAL OF 128 BALL SEALERS. GOOD BALL ACTION. FLUSHED W/ 24 BBL SLICK WATER. BALLED OUT @ 2980' - AVG TREATING PRESSURE 2380' - AVG RATE 5.8 BPM. RIH W/ JUNK BASKET - RETRIEVED 119 BALL SEALERS AND HAD 89 HITS. RD BLUEJET. SWION.	0.00	0.00
6/16/00	HELD SAFETY MEETING. RU BJ SERVICES. TESTED ALL LINES TO 3000 LB. SET POP OFF @ 2950 PSI. FRACED THE MENELEE & CLIFHOUSE IN ONE SINGLE STAGE W/ 4559 BBL SLICK WATER & 105,520 LB OF 20/40 BRADY SAND. AVG RATE 61.7 BPM - AVG PRESSURE 2789 PSI - ISIP 656 PSI. 5 MIN 571 PSI - 10 MIN 505 PSI - 15 MIN 447 PSI. OPENED WELL UP TO BLOW DOWN TANK. 140 PSI ON WELL WHEN OPENED. FLOWED FOR 30 MIN. WELL WENT ON VACUUM. SWION.	0.00	0.00
6/19/00	HELD SAFETY MEETING. RU BLOUEY LINE. OPENED WELL. CSG PRESSURE 330 PSI. BLOWED WELL DOWN. RIH W/ METAL MUNCHER & TBG TO 5085'. RU AIR UNIT & UNLOADED WELL. STARTED CLEANING OUT CLIFHOUSE & MENELEE. WELL FLOWING 26 BBL FLUID PER HR & 1/2 GAL SAND PER HR. RECOVERED 250 BBL WATER. PUH TO 4480'. SWION	0.00	0.00
6/20/00	HELD SAFETY MEETING. CSG PRESSURE 500 PSI. OPENED UP WELL. BLEED WELL DOWN. RIH W/ MILL - TAGGED SAND @ 5300'. RU AIR UNIT & UNLOADED WELL. CLEANED OUT FROM 5300' TO COMPOSITE PLUG @ 5368'. CLEANED OUT 18' BELOW BOTTOM PERFS. CIRCULATED HOLE W/ AIR UNIT. AVG PRESSURE ON AIR PACK 550 PSI - AVG RETURN FLUID 20 BBL PER HR & 1/2 GAL SAND PER HR. PUH TO 5001' W/ TBG. STARTED TESTING THE CLIFHOUSE & MENELEE @ 4 PM. WELL LOADED UP & DIED @ 9 PM. SWION.	0.00	0.00

Daily Summary

API	300392043200	Field Name	BASIN DK	Area	EAST	County	RIO ARriba	State/Province	NEW MEXICO	Operator		License No	
KB Elev (ft)	6583.50	Ground Elev (ft)	6572.00	KB-CF (ft)	11.50	KB-Tubing Head Distance (ft)	11.50	Plug Back Total Depth (ftKB)	7,717.0	Spud Date	11/2/71	Rig Release Date	

Start	Ops This Rpt	Day Total	Cum. To Date
6/21/00	HELD SAFETY MEETING. CSG PRESSURE 25 PSI. OPENED WELL UP. RIH W/ MILL TO 5368'. RU AIR UNIT & UNLOADED WELL. RU SWIVEL & RUN DOWN TO 5375'. DRILLED OUT COMPOSITE PLUG. CIRCULATED HOLE W/ AIR PACK. AVG PRESSURE TO LIFT FLUID 600 PSI. WELL MAKING 22 BBL WATER PER HR & 1/2 GAL SAND PER HR. CIRCULATED WELL W/ AIR FOR 4 HRS. NO CHANGE. POH TO 4445'. SWION. RECOVERED 150 BBL WATER. TOTAL WATER RECOVERED 650 BBL.	0.00	0.00
6/22/00	HELD SAFETY MEETING. CSG PRESSURE 50 PSI. OPENED WELL UP. RIH W/ MILL - TAGGED SAND @ 5494'. RU AIR UNIT & UNLOADED WELL. CLEANED OUT WELL DOWN TO 5593' - 29 FT BELOW BOTTOM PERFS ON POINT LOOKOUT FORMATION. CIRCULATED HOLE W/ AIR FOR 2 HRS - AVG 20 BBL WATER PER HR - 1 1/2 GAL SAND PER HR. PUH TO 4675'. CIRCULATED WELL W/ AIR DOWN THE CSG & OUT THE TBG FOR 1 HR. SHUT AIR OFF - WELL FLOWED FOR ABOUT 1 HR - WELL DIED. RECOVERED 200 BBL WATER - TOTAL WATER RECOVERED 900 BBL. SWION.	0.00	0.00
6/23/00	HELD SAFETY MEETING. POOH W/ MILL & TBG. RIH W/ 4 1/2" RBP & PKR NO 2 3/8" TBG. SET RBP @ 4875' AND PKR @ 4837'. PRESSURE TEST CSG. WOULD NOT HOLD. COULD PUMP INTO HOLE @ 3 BPM @ 300#. MOVED RBP TO 4837' AND PKR TO 4775'. PRESSURE TEST CSG. WOULD NOT HOLD. COULD PUMP INTO HOLE IN CSG @ 2 BPM @ 1500#. MOVED RBP TO 4438' AND PKR. TO 4307'. PRESSURE TEST CSG. WOULD NOT HOLD. COULD PUMP INTO HOLE IN CSG @ 1/4 BPM @ 1500#. MOVED RBP TO 4314' AND PKR. PRESSURE TEST CSG TO 1500#. CSG HELD OK. MOVED RBP TO 4870'. ISOLATED ALL PERFS. RU AIR UNIT AND UNLOADED HOLE. CIRCULATED HOLE FOR 2 HRS. MADE 15 BPH THROUGH HOLES IN CSG. POOH W/ RBP AND PKR. SWION	0.00	0.00
6/26/00	HELD SAFETY MEETING. CAG 500 PSI. OPEN WELL UP. BLEED WELL DOWN. RU BLUEJET. RIH W/ 4 1/2" COMPOSITE PLUG AND SET @ 5375'. ABOVE PERFS ON POINT LOOKOUT AND SET COMPOSITE PLUG @ 5000' ABOVE PERFS ON MENEFFEE. SET COMPOSITE PLUG @ 4870' ABOVE PERFS ON CLIFFHOUSE. POOH W/ TOOLS. RIG DOWN BLUEJET. RIH W/ 4 1/2" CEMENT RETAINER SET @ 4713'. SWION	0.00	0.00
6/27/00	HELD SAFETY MEETING. SQUEEZED FROM 4713' TO 4870'. RU BJ SERVICE CEMENT PUMPS. TESTED LINES TO 3000#. OK. LOADED BACK SIDE W/ 51 BBL WATER. EST RATE @ 2 BPM @ 0 PSI. STARTED CEMENT. PUMPED 50 SX PREMIUM LITE + 1% CACLZ + 3% KCL. 18.5 BBL SLURRY. DISPLACED W/ 18 BBL OF WATER. AFTER DISPLACING 15 BBL WATER PRESSURED UP TO 1400# @ 1 BPM. LOST ALL PRESSURE. STUNG OUT OF CEMENT RETAINER. POOH W/ TBG. SECOND SQUEEZE FROM 4713' TO 4340'. EST RATE @ 1/8 BPM @ 1900#. RIH W/ TBG TO 4690'. PUMPED BALANCED CEMENT PLUG. PUMPED 7 BBL SLURRY. DISPLACED W 15 BBL WATER. POOH W/ TBG. PRESSURED UP TO 1500# AND STARTED SQUEEZING @ 1/2 BPM. PUMPED 2 MORE BBL @ 1/2 BPM @ 1500#. SHUT DOWN FOR 15 MIN. CSG LEAKED OFF TO 1466#. PRESSURED BACK UP CSG TO 1500# HELD OK. LEFT PRESSURE ON WELL. SWION	0.00	0.00
6/28/00	HELD SAFETY MEETING. CSG PRESSURE 1100#. OPEN WELL UP. RIH W/ 3.875 BIT & 6 DRILL COLLARS 3 1/8" ON 2.3/8 WORK STRING. TAGGED CEMENT @ 4259'. DRILLED DOWN TO 4359'. DRILLED OUT 100'. SHUT DOWN CEMENT TO SOFT. CIRCULATED WELL CLEAN AND PUH TO 4259'. SWION.	0.00	0.00

Daily Summary

API	Field Name	Area	County	State/Province	Operator	License No
300392043200	BASIN DK	EAST	RIO ARRIBA	NEW MEXICO		
KB Elev (ft)	Ground Elev (ft)	KB-CF (ft)	KB-Tubing Head Distance (ft)	Plug Back Total Depth (ftKB)	Spud Date	Rig Release Date
6583.50	6572.00	11.50	11.50	7,717.0	11/2/71	

Start	Ops This Rpt	Day Total	Cum. To Date
6/29/00	HELD SAFETY MEETING. RIH W/ 3 7/8 BIT & 6 DRILL COLLARS 3 1/8" ON 2 3/8 WORK STRING. TAGGED CEMENT @ 4359'. DRILLED OUT CEMENT TO 4713' DOWN TO CEMENT RETAINER. DRILLED 354' CEMENT. TEST UPPER SQUEEZE TO 500# FOR 30 MIN. OK. SWION	0.00	0.00
6/30/00	HELD SAFETY MEETING. RIH W/ 3 7/8" BIT & 6 DRILL COLLARS 3 1/8" ON 2 3/8" WORK STRING TO 4713'. DRILLED OUT CEMENT RETAINER & CEMENT DOWN TO 4820'. CIRCULATED HOLE CLEAN. PUH TO 4700'. SWION.	0.00	0.00
7/5/00	HELD SAFETY MEETING. OPENED WELL. RIH W/ 3 7/8" BIT & 6 DRILL COLLARS 3 1/8" ON 2 3/8" WORK STRING TO 4810'. DRILLED DOWN TO COMPOSITE PLUG @ 4870'. TESTED SQUEEZE TO 500 LB FOR 1 HR. HELD OK. SWION.	0.00	0.00
7/6/00	HELD SAFETY MEETING. POOH W/ 3 7/8" BIT & 6 DRILL COLLARS 3 1/8" ON 2 3/8" WORK STRING. RIH W/ 3 7/8" METAL MUNCHER TO 4870'. RU AIR UNIT. STARTED TO UNLOAD WELL. AIR UNIT LOST OIL PUMP. SWION.	0.00	0.00
7/7/00	HELD SAFETY MEETING. RU AIR UNIT. UNLOADED WELL. RIH W/ 3 7/8" METAL MUNCHER & 6 DRILL COLLARS 3 1/8" ON 2 3/8" WORK STRING. DRILLED OUT COMPOSITE PLUG THAT IS OVER THE CLIFFHOUSE FORMATION. SWION.	0.00	0.00
7/10/00	HELD SAFETY MEETING. OPENED WELL & BLEED WELL DOWN. RIH W/ 3 7/8" METAL MUNCHER & 6 DRILL COLLARS 3 1/8" ON 2 3/8" WORK STRING TO 4870'. DRILLED OUT COMPOSITE PLUG & CEMENT. DRILLED TO 4872'. HAD TO SHUT DOWN OPERATION DUE TO CLUTCH PLATE BEARINGS ON WORKOVER RIG. SWION.	0.00	0.00
7/11/00	HELD SAFETY MEETING. RIH W/ 3 7/8" BIT & 6 DRILL COLLARS 3 1/8" ON 2 3/8" WORK STRING TO 4872'. DRILLED OUT PLUG & CEMENT TO 4874'. SWION.	0.00	0.00
7/12/00	HELD SAFETY MEETING. OPENED WELL UP - BLEED WELL DOWN. RIH W 3 7/8" BIT & 6 DRILL COLLARS 3 1/8" ON 2 3/8" WORK STRING TO 4874'. DRILLED CEMENT & PLUG FROM 4874' TO 4878'. CIRCULATED HOLE CLEAN. PUH. SWION.	0.00	0.00
7/13/00	HELD SAFETY MEETING. OPENED WELL UP - BLEED WELL DOWN. RIH W/ 3 7/8" BIT & 6 DRILL COLLARS 3 1/8" ON 2 3/8" WORK STRING TO 4878'. DRILLED TO 4880'. SHUT DRILLING DOWN - APPEARS TO BE DRILLING OUTSIDE OF CSG. CAUGHT SAMPLES ON RETURN- APPEARS TO BE SHELL. CAME OUT OF HOLE - LAYING 2 3/8" WORK STRING DOWN ON FLOAT. SWION.	0.00	0.00
7/14/00	HELD SAFETY MEETING. POOH W/ DRILL COLLARS & 2 3/8" WORK STRING. LAID DOWN TBG & COLLARS ON FLOAT. RIH W/ MAGNETIC THICKNESS TOOL. LOGGED FROM 4874' TO 4000'. MTT LOG SHOWED HOLE IN CSG @ 4874'. LOG SHOWED BAD CSG FROM 4874' TO 4300'. SWION.	0.00	0.00
7/17/00	HELD SAFETY MEETING. RDMO.	0.00	0.00

Daily Summary

API	300392043200	Field Name	BASIN DK	Area	EAST	County	RIO ARRIBA	State/Province	NEW MEXICO	Operator		License No	
KB Elev (ft)	6583.50	Ground Elev (ft)	6572.00	KB-CF (ft)	11.50	KB-Tubing Head Distance (ft)	11.50	Plug Back Total Depth (ftKB)	7,717.0	Spud Date	11/2/71	Rig Release Date	

Start	Ops This Rpt	Day Total	Cum. To Date
10/18/00	DROVE RIG FROM #183M TO #129. MI Spot equipment, ND wellhead , NU BOP, RU laydown tnk. #99F Secure well. SDFN	4,265.00	4,265.00
10/19/00	Tbg. on loc @ 7:30 am . Float too short to PU tbg. Sent to town to have tbg. loaded onto longer float. Trucks not available till mid after noon. SDFN	2,315.00	6,580.00
10/20/00	New float on loc @ 10:30 am. TIH w/ 155 jts 2 3/8" tbg. PU and Tallying from float. Tagged @ 4880' . Notified BLM we will be spotting cement on Monday 10/23/2000. Scure well SDFWE.	2,965.00	9,545.00
10/23/00	RU BJ Services , Hold pre-job safety mtg. PU 1 jt and RIH until tbg. is out side the csg. RU pump lines . Load backside w/ rig pump. Breakcirculation w/ cement pump. Pumped 50 sks (12 bbl) type 3 cement w/1% cacl. @ 14.5 slurry @ 1.5 bpm., displaced w/ 14.7bbl H2O. @ 2.1 bpm. POOH w/77 stands and a single.Opened rams loaded csg.Closed rams. Secure well. SDFN, WOC.	6,665.00	16,210.00
10/24/00	PU 3 7/8 chomps bit .35ft, 3 1/8" bit sub 1.68ft, 3 7/8"x 3.91' string mill (spiral type), 3 1/8"x 4' short collar,3 7/8"x2.75' stabilizer,3 1/8"x6' collar, 3 7/8"x2.75' stabilizer, 4, 3 1/8" drill collars (118.99'), 3 1/8"x 2.75' X/O sub.Tot. ft of tools is 143.22'. TIH w/66 stands and tag cement at 4343', (531') cement to drill. PU swivel and drill cement. Drill total of 50' , circulate clean. Secure well SDFN. Good hard cement returns to pit.	4,865.00	21,075.00
10/25/00	PU swivel break circulation and resume drilling. D/O TO 4595' total drilled for the day is 204' . Still need to drill 279' to get back inside the csg.Circulated clean and SDFN.	4,665.00	25,740.00
10/26/00	PU swivel, break circulation and resume drilling . drilled 7 jts. for 220' tot feet drilled , by talley puts us at 4815'. Exit point on csg. was at 4874'. Circulated clean. SDFN	4,365.00	30,105.00
10/27/00	Safety mtg.drill cement w/ 1000# wt. on chomps bit from 4839'. Drill thru exit point in csg. @ 4874' slowly w/ 500to 750 # wt. on bit to 4886'.Tag up on hard spot at 4886', drilling going slower, circ. good cement returns to pit. S/D drilling @ 4891' Pressure tested to 500# test was good.Resumed drilling and rev. circulating. Lost circulation for 2 min and pressure went from 100# to 950# . Switched over to circ down tbg. Broke circulation and psi went down to 250#. Drill from 4891' to 4898' w/ some metal flakes and small amounts of cedar fiber with the cement. From 4898' to 4902' drilled easy, circ. clean and test to 500#. Pressure bleeds off in 3 min.Continue drilling to 4908' but drilling is slow. Tight spot was noted from 4886' to4896' BHA is very rigid and I suspect that the hole is slightly deviated. Top stabilizer is 21' from bottom of bit witch puts centralizers going thru tight spot when bit is @ 4908'.Circulated clean . PU and LD three jts. SDFWE.	4,515.00	34,620.00
10/30/00	TIH to 4902', est circ. w/water, Tag up at 4908', Start drilling to 4911' . Not making hole. POOH and inspect bit. Bit shows evidence that csg. is colapsed or tight pipe. Chomps bit wearing around bottom outside edge, lost 2 bottoms. Grooved down to outer guage inserts like going into tight pipe. PU MS collar and TIH to 4911' (156 jts w/8' stick up). Try and turn thru but it torques up. POOH w/tbg. Secure well.SDFN	4,465.00	39,085.00
10/31/00	FINAL REPORT TIH w/ 175 jts, 2 3/8tbg. POOH and laydown tbg. and drill collars. Landed well w/1jt tbg. ND BOP and NU well head . Well will be replaced w/ new well.RD rig and equipment. Turn over to operator.	3,965.00	43,050.00

Bishop, Ron C.

From: Moody, Craig E.
Sent: Wednesday, January 10, 2001 6:14 PM
To: Bishop, Ron C.
Cc: Hartman, David E.; Blair, Donald J.; Roberts, Catherine M.
Subject: RE: Need plugging paperwork asap for 28-7 #129

Based on Dave's good idea on proceeding to drill the replacement well with the rig being in area, Cathie told me that it's a "go" -- so we need to get 129 plugged asap. Cathie will be ready to process once she gets the paperwork from you. Thanks,

Craig