

District I
1625 N. French Dr., Hobbs, NM 88240
District II
811 South First, Artesia, NM 88210
District III
1000 Rio Brazos Rd., Aztec, NM 87410
District IV
2040 South Pacheco, Santa Fe, NM 87505

State of New Mexico
Energy, Minerals and Natural Resources

OIL CONSERVATION DIVISION
2040 South Pacheco
Santa Fe, NM 87505

Form C-105
Revised March 25, 1999

WELL API NO.

30-039-20432

5. Indicate Type of Lease

STATE ☒ FEE ☐

State Oil & Gas Lease No.

E290-3

WELL COMPLETION OR RECOMPLETION REPORT AND LOG

1a. Type of Well:
OIL WELL ☐ GAS WELL ☒ DRY ☐ OTHER _____

b. Type of Completion:
NEW WORK PLUG DIFF.
WELL ☐ OVER ☐ DEEPEN ☐ BACK ☐ RESVR. ☒ OTHER ☐

2. Name of Operator

CONOCO INC.

3. Address of Operator

P.O. BOX 2197 DU 3066

HOUSTON, TEXAS 77252-2197

YOLANDA PEREZ (281-293-1613)

7. Lease Name or Unit Agreement Name

SAN JUAN 28-7 UNIT

8. Well No.

129

9. Pool name or Wildcat

BLANCO MESA VERDE

4. Well Location

Unit Letter **G**: **1678'** Feet From The **NORTH** Line and **1670'** Feet From The **EAST** Line

Section **02** Township **27 NORTH** Range **07 WEST** NMPM

RIO ARRIBA County

10. Date Spudded

11/2/71

11. Date T.D. Reached

12. Date Compl. (Ready to Prod.)

7-17-00

13. Elevations (DF& RKB, RT, GR, etc.)

6572'

14. Elev. Casinghead

15. Total Depth

7763'

16. Plug Back T.D.

7717'

17. If Multiple Compl. How Many Zones?

2

18. Intervals Drilled By

Rotary Tools

☒

Cable Tools

19. Producing Interval(s), of this completion - Top, Bottom, Name

BLANCO MESA VERDE 4885' - 5563'

20. Was Directional Survey Made

21. Type Electric and Other Logs Run

CBL, MTT

22. Was Well Cored

23. CASING RECORD (Report all strings set in well)

CASING SIZE	WEIGHT LB./FT.	DEPTH SET	HOLE SIZE	CEMENTING RECORD	AMOUNT PULLED
9-5/8"	36#	208'	12-1/4"	190 S	
4-1/2"	10.5#	7736'	6-1/4"	505 S	

24. LINER RECORD

SIZE	TOP	BOTTOM	SACKS CEMENT	SCREEN

25. TUBING RECORD

SIZE	DEPTH SET	PACKER SET
NONE		

26. Perforation record (interval, size, and number)

BLANCO MESA VERDE 4885' - 5563'

27. ACID, SHOT, FRACTURE, CEMENT, SQUEEZE, ETC.

DEPTH INTERVAL AMOUNT AND KIND MATERIAL USED

28. PRODUCTION

Date First Production		Production Method (<i>Flowing, gas lift, pumping - Size and type pump</i>)				Well Status (<i>Prod. or Shut-in</i>)	
		F				SI	
Date of Test	Hours Tested	Choke Size	Prod'n For Test Period	Oil - Bbl	Gas - MCF	Water - Bbl.	Gas - Oil Ratio
N/A	N/A						
Flow Tubing Press.	Casing Pressure	Calculated 24-Hour Rate	Oil - Bbl.	Gas - MCF	Water - Bbl.	Oil Gravity - API - (<i>Corr.</i>)	
#	#						

29. Disposition of Gas (*Sold, used for fuel, vented, etc.*)

TEST NOT DONE DUE TO CASING PROBLEMS

Test Witnessed By

30. List Attachments

SEE DAILY FOR FURTHER INFORMATION

31. I hereby certify that the information shown on both sides of this form as true and complete to the best of my knowledge and belief

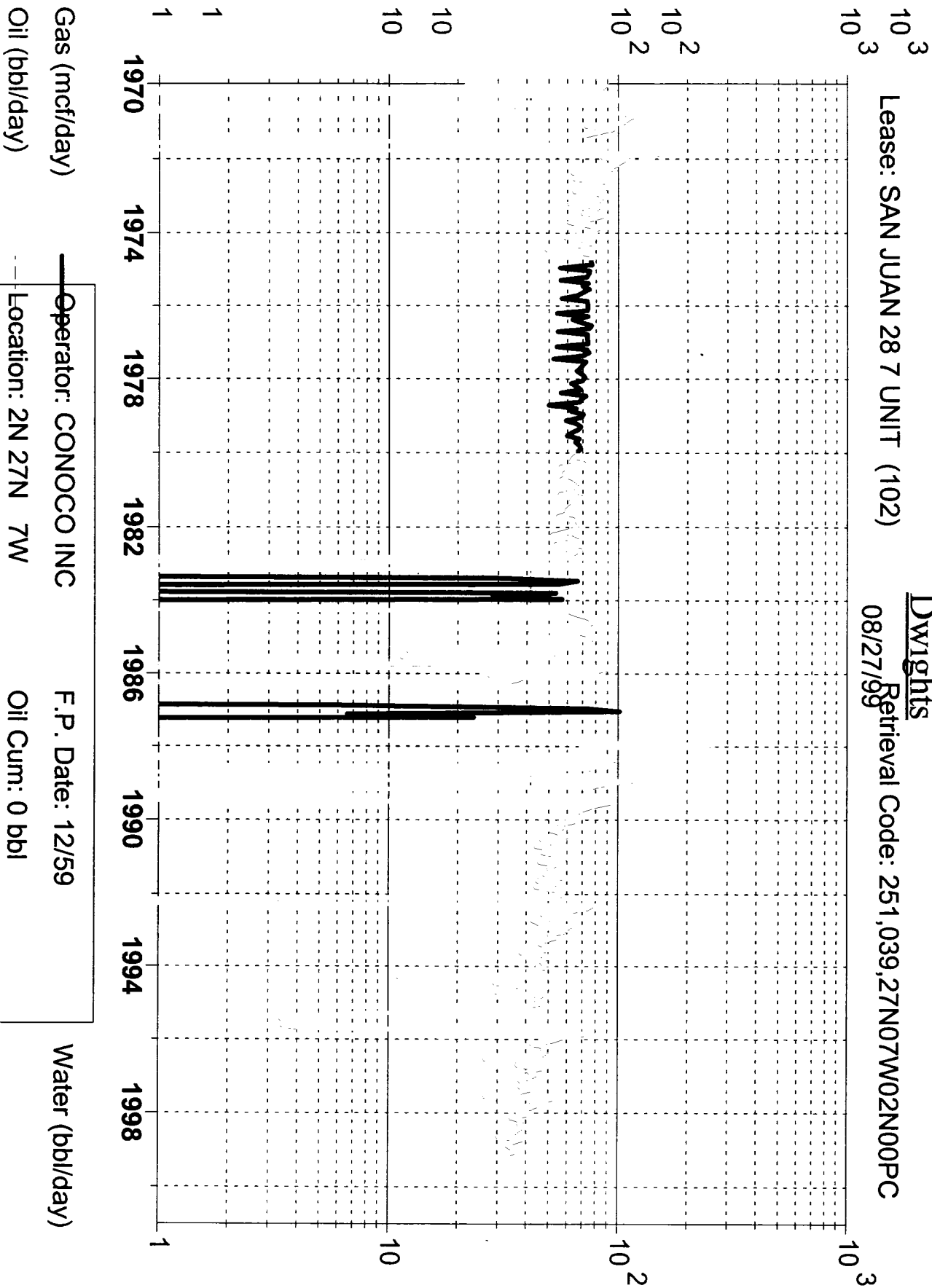
Signature _____ Printed Name **DEBRA SITTNER** Title **As Agent for Conoco, Inc.** Date **2-24-01**

MAR 8

Lease: SAN JUAN 28 7 UNIT (102)

Dwights
08/27/99

Retrieval Code: 251,039,27N07W02N00PC



Gas (mcf/day)

Oil (bbl/day)

Operator: CONOCO INC

Location: 2N 27N 7W

F.P. Date: 12/59

Oil Cum: 0 bbl

Field: BLANCO SOUTH (PICTU Gas Cum: 833.8 mmcf

Reservoir: PICTURE CLIFFS L.P. Date: 02/99

Water (bbl/day)

INSTRUCTIONS

This form is to be filed with the appropriate District Office of the Division not later than 20 days after the completion of any newly-drilled or deepened well. It shall be accompanied by one copy of all electrical and radio-activity logs run on the well and a summary of all special tests conducted, including drill stem tests. All depths reported shall be measured depths. In the case of directionally drilled wells, true vertical depths shall also be reported. For multiple completions, items 25 through 29 shall be reported for each zone. The form is to be filed in quintuplicate except on state land, where six copies are required. See Rule 1105.

INDICATE FORMATION TOPS IN CONFORMANCE WITH GEOGRAPHICAL SECTION OF STATE

Southeastern New Mexico		Northwestern New Mexico	
T. Anhy_____	T. Canyon_____	T. Ojo Alamo_____	T. Penn. "B"_____
T. Salt_____	T. Strawn_____	T. Kirtland-Fruitland_____	T. Penn. "C"_____
B. Salt_____	T. Atoka_____	T. Pictured Cliffs_____	T. Penn. "D"_____
T. Yates_____	T. Miss_____	T. Cliff House_____	T. Leadville_____
T. 7 Rivers_____	T. Devonian_____	T. Menefee_____	T. Madison_____
T. Queen_____	T. Silurian_____	T. Point Lookout_____	T. Elbert_____
T. Grayburg_____	T. Montoya_____	T. Mancos_____	T. McCracken_____
T. San Andres_____	T. Simpson_____	T. Gallup_____	T. Ignacio Otzte_____
T. Glorieta_____	T. McKee_____	Base Greenhorn_____	T. Granite_____
T. Paddock_____	T. Ellenburger_____	T. Dakota_____	T. _____
T. Blinbry_____	T. Gr. Wash_____	T. Morrison_____	T. _____
T. Tubb_____	T. Delaware Sand_____	T. Todilto_____	T. _____
T. Drinkard_____	T. Bone Springs_____	T. Entrada_____	T. _____
T. Abo_____	T. _____	T. Wingate_____	T. _____
T. Wolfcamp_____	T. _____	T. Chinle_____	T. _____
T. Penn_____	T. _____	T. Permian_____	T. _____
T. Cisco (Bough C)_____	T. _____	T. Penn "A"_____	T. _____

OIL OR GAS SANDS OR ZONES

No. 1, from.....to.....
No. 2, from.....to.....
No. 3, from.....to.....
No. 4, from.....to.....

IMPORTANT WATER SANDS

Include data on rate of water inflow and elevation to which water rose in hole.

No. 1, from.....to.....feet.....
No. 2, from.....to.....feet.....
No. 3, from.....to.....feet.....

LITHOLOGY RECORD (Attach additional sheet if necessary)

From	To	Thickness In Feet	Lithology	From	To	Thickness In Feet	Lithology
------	----	----------------------	-----------	------	----	----------------------	-----------

UNITED STATES
DEPARTMENT OF THE INTERIOR
BUREAU OF LAND MANAGEMENT

RECEIVED
BLM

SUNDRY NOTICES AND REPORTS ON WELLS
Do not use this form for proposals to drill or to deepen or reentry to a different reservoir.
Use "APPLICATION FOR PERMIT—" for such proposals.

SUBMIT IN TRIPLICATE

1. Type of Well <input type="checkbox"/> Oil <input checked="" type="checkbox"/> Gas <input type="checkbox"/> Other		2. Name of Operator Conoco Inc	
3. Address and Telephone No. P.O. Box 2197 DU-3066 Houston, TX 77252-2197 (281)		4. Location of Well (Footage, Sec., T., R., M. or Survey Description) SEC. 2, T-27N, R-7W, 990" ESL & 1790' FWL	
5. Lease Designation and Serial No. D290-28		6. If Indian, Allottee or Tribe Name	
7. If Unit or Co. Agreement Designation		8. Well Name and No. SAN JUAN 28-7	
9. API Well No. SAN JUAN 28-7 # 102		10. Field and Pool, or Exploratory Area 30-039-07162	
11. County or Parish, State BLANCO MESAVERDE/BLANCO P.		12. County or Parish, State RIO ARriba, NM	

CHECK APPROPRIATE BOX(S) TO INDICATE NATURE OF NOTICE, REPORT, OR OTHER DATA

TYPE OF SUBMISSION		TYPE OF ACTION	
<input checked="" type="checkbox"/> Notice of Intent <input type="checkbox"/> Subsequent Report <input type="checkbox"/> Final Abandonment Notice		<input checked="" type="checkbox"/> Abandonment <input type="checkbox"/> Recompletion <input type="checkbox"/> Plugging Back <input type="checkbox"/> Casing Repair <input type="checkbox"/> Altering Casing <input type="checkbox"/> Other	
13. Describe Proposed or Completed Operations (Clearly state all pertinent details, and give pertinent dates, including estimated date of starting any proposed work. If well is directionally drilled, give subsurface locations and measured and true vertical depths for all markers and zones pertinent to this work.)		Note: Report results of multiple completion on Well Completion or Resumption Report and Log form. <input type="checkbox"/> Change of Plans <input type="checkbox"/> New Construction <input type="checkbox"/> Non-Routine Fracturing <input type="checkbox"/> Water Shut-Off <input type="checkbox"/> Conversion to Injection <input type="checkbox"/> Dispose Water	

CONOCO, INC. PROPOSES TO DOWNHOLE COMMINGLE THIS WELL IN THE BLANCO MESAVERDE AND BLANCO PICTURED CLIFFS SOUTH

RECEIVED
NOV - 1 1999
OIL CON. DIV.
DIST. 8

14. I hereby certify that the foregoing is true and correct.		Signed	
(This space for Federal or State office use) /s/ Joe Hewitt Approved by		Title Team Lead, Petroleum Management	
Conditions of approval if any: BLM(6), NMOCDD(1), SHEAR, PONCA, COST ASST, FILE ROOM		Date OCT 27 1999	

Title 18 U.S.C. Section 1001, makes it a crime for any person knowingly and willfully to make to any department or agency of the United States any false, fictitious or fraudulent statement or representations as to any matter within its jurisdiction.

See instruction on Reverse Side
NMOCDD

Lease Name: San Juan 28-7 Unit 129

No.: 1 TD: 7736.0 ftkb PBTD: 7717.0 ftkb

5/5/2000 Rig up pulling unit, spot and rig up equipment. Csg press. 120# tbg. Press. 95#. Blow well down, kill well 20 bbls of 1% KCl. NDWH, NUBOP. POOH with tbg. Tally out. RIH with csg scraper to 5700'. POOH with tbg and scraper. RU wireline, RIH with comp plug to 5601'. Set plug. POOH with setting tool. Load hole, test to 3000#, held ok. RIH with logging tool to 5600', try to calibrate logging tool, would not work. POOH with logging tool. Secure well. SDFN

5/8/2000 0# csg press. RU wireline unit. RIH with logging tool. Run CBL log from 5600' to 4400'. POOH with logging tool. Sent logs to Eng. Rd wireline unit, secure well SDFN

5/9/2000 Stand by for frac.

5/10/2000 Csg. Press. 0# open well, RU wireline unit, RIH with perf gun. Perf. Point lookout formation for 1st stage, as followed: 5563',59',55',51',28',24',20',02',5498',94',90',86',82',78',74',70',66',62',58',54',50',46',42', 23 perf points , 2 - shots per foot, POOH with perf gun. Rd wireline unit. Secure well. SDFN.

5/11/2000 0# csg press. RU frac unit. Safety meeting. Test lines to 5000#, set pop off. Load hole with 75 bbls of 1% KCl. 12bpm/200# Start acid, pump 1500 gals. 15% HCl. Drop 92 ball sealers, got some great ball action, press. Up to 3800# broke down to 850#, pressure up to 2500# broke down to 700#, avg. Bpm on acid was 9-10 bbls. Shut down ISDP 400#. Rd acid unit, rd isolation tool, RU wireline RIH with junk basket, recovered 91 ball sealers , 46 hits. Rd wireline unit, RU isolation tool. RU frac unit. Frac well, 20 bbls to load, start pad had a break at 45bbls pm. Est. Rate at 65.8 bpm at 1980#. Start 1/2# sand, avg. Press. 1970# at 65.5bpm, 1# sand avg press. 1990# at 65.8bpm. Isdp 600# in fifteen 550# shut well in. Rd frac unit , rd isolation tool. RU wireline unit. RIH with comp. Plug. Well flowing. Plug to 5360'. Got hung up in sand, set plug. POOH with setting tool. Rd Wireline, flow back well. Plug not set. Shut well in. SDFN.

5/12/2000 Csg. Press. 370# RU flow line and flow back tnk. Flow back to tnk. Flow back 200bbls. Of fluid. Flowing press. Down to 20 #. RIH with metal muncher, and tbg. Tag up on plug at 3265'. Haul in and rig up air unit. Unload well. Total fluids recovered 300bbls. Secure well SDFN.

5/15/2000 Csg press. 110# blow well down, RIH with tbg and mill. Tag up at 3250'. RU power swivel, RIH with tbg. Tag up 3265'. RU air unit, would not circulate. Mill plugged. RD air unit, POOH with tbg and mill. Mill plugged with sand and mud. RIH with mill and tbg. Tag fill at 3265', pu tbg. To 3252'. RU air unit, circulate hole, hole clean, shut down air, RU power swivel, RU air unit, lost circulation, tbg. Stuck. Could not get tbg to move. Secure well SDFN.

5/16/2000 Csg press. 25#. Blow well down, RU wireline unit, free point tbg. Tag fill in tbg, 3233'. , tbg. Free to this point. POOH with Freepoint tool, RIH with chemical cutter, cut tbg at 3223'. Cutter hung up, work free. POOH with cutter. Rd wireline unit. POOH with 106 joints of tbg. RIH with wash pipe shoe, 1 joint of wash pipe, jars, 6-drill collars, and 1 joint of tbg. Secure well SDFN

5/17/2000 Csg. Prss. 0# open well, finish RIH with tbg. Tag up 3220'. (tag up higher than prev. tag.) RU power swivel. RU air unit. Drill out an clean out to 3355'. Had to work shoe on 1st bridge at 3220', about 5' long. RD air unit, RD power swivel. Put to 2355' secure well SDFN.

5/18/2000 Csg press 15#; blow well down, RIH with tbg. Tag fish at 3250'. RU air unit clean off top of fish. RD air unit. POOH with tbg, drill collars and wash pipe. RIH with overshot, jars, drill collars and tbg. Tag up on fish at 3250'. Latch on to fish , jar free, POOH with tbg. Drill collars, jars, and fish. (1 1/2 joints of tbg, change over, an metal muncher.) RIH with wash pipe shoe, wash pipe, an tbg. Tag up at 3255'. PU tbg. 1 stand. Secure well SDFN.

5/19/2000 Csg. Press. 10#, blow well down. RIH with tbg, tag up at 3255'. RU air unit, unload well, drill out an clean out to 3260', drill thru. RD power swivel, RIH with tbg, tag up 4322' tag up, RU power swivel, unload well. Drill out and clean out to 4329', drop thru. RD power swivel, RIH with tbg. Tag up 4655'. RU power swivel, unload well, drill out and clean out to 4658', drop thru. Rd power swivel, RIH with tbg. Tag up 4717'. RU power swivel, unload well. Rd power swivel, rd air unit , pu tbg. To 4000'. Secure well SDFN.

District I
1625 N. French Dr., Hobbs, NM 88240
District II
811 South First, Artesia, NM 88210
District III
1000 Rio Brazos Rd., Aztec, NM 87410
District IV
2040 South Pacheco, Santa Fe, NM 87505

State of New Mexico
Energy, Minerals & Natural Resources
OIL CONSERVATION DIVISION
2040 South Pacheco
Santa Fe, NM 87505
99 OCT 16 AM 5:10
RECEIVED

Form C-102
Revised March 17, 1999
Submit to Appropriate District Office
State Lease - 4 Copies
Fee Lease - 3 Copies
AMENDED REPORT ☐

API Number 30-039-07162		Pool Code 72319/72439		Pool Name Blanco Picture Cliff South / Blanco Mesaverde	
Property Code 016608		Property Name San Juan 28-7 Unit			
OGRID No. 005073		Operator Name Conoco Inc.			
		Well Number 102			
		Elevation 6562			

UL or lot no. N		Section 2		Township 27N		Range 7W		Lot Idn		Feet from the 990'		North/South line South		Feet from the 1790		East/West line West		County Rio Arriba	
--------------------	--	--------------	--	-----------------	--	-------------	--	---------	--	-----------------------	--	---------------------------	--	-----------------------	--	------------------------	--	----------------------	--

UL or lot no.		Section		Township		Range		Lot Idn		Feet from the		North/South line		Feet from the		East/West line		County	
Bottom Hole Location If Different From Surface																			
Order No.																			
Dedicated Acres 160/320		Joint or Infill Y		Consolidation Code U		Order No.													

NO ALLOWABLE WILL BE ASSIGNED TO THIS COMPLETION UNTIL ALL INTERESTS HAVE BEEN CONSOLIDATED OR A NON-STANDARD UNIT HAS BEEN APPROVED BY THE DIVISION

17 OPERATOR CERTIFICATION I hereby certify that the information contained herein is true and complete to the best of my knowledge and belief		Signature 		Printed Name Deborah Moore		Title Regulatory Analyst		Date 10/06/99		18 SURVEYOR CERTIFICATION I hereby certify that the well location shown on this plat was plotted from field notes of actual surveys made by me or under my supervision, and that the same is true and correct to the best of my belief		Date of Survey		Signature and Seal of Professional Surveyor		Certificate Number	
-------------------------------------------------------------------------------------------------------------------------------------------------	--	---------------	--	-------------------------------	--	-----------------------------	--	------------------	--	-------------------------------------------------------------------------------------------------------------------------------------------------------------------------------------------------------------------------------------------	--	----------------	--	---------------------------------------------	--	--------------------	--

5/22/2000 Csg. Press. 130# blow well down, RIH with tbg to 4717, tag up. RU air unit, unload well, recovered 20 bbls of oil, an 80 bbls of H2O, RU swivel, drill an clean out fill to 5180'. Hit lot of bridges going in. Fill return is frac sand. Pu tbg. 10 stands. Secure well SDFN

5/23/2000 Csg press. 500#, blow well down. RIH with tbg. Tag up 4740'. RU air unit, start clean out, clean out to 5360'. Tag up on comp plug. Unload well. Recovered 100 bbls of fluid. Rd air unit, POOH with 116 stands, drill collars and wash pipe with shoe. RIH With packer and 20 stands of tbg. Secure well SDFN.

5/24/2000 Csg an tbg. Press. 60#, blow well down, RIH with tbg to 5343'. Set (retrievematic) packer and test plug to 3000#. Held ok. Release and move packer. Test csg, found leak between 4375'-4406'. 3bpm/ 100#. POOH with tbg. and packer. Secure well SDFN.

5/25/2000 Csg. Press. 0# RU wireline unit, RIH with perf gun. Shot 4 squeeze holes at 5190' and at 5015'. POOH with perf gun. RD Wireline. RIH with 4.5" cement retainer and 83 stands of tbg. Set retainer at 5185'. Secure well SDFN.

5/26/2000 RU cement pump unit, test lines to 3000#. Est. Injection rate, 1.8bpm/1529#. Start cement, pump 11.7 bbls of cement, displace with 20 bbls, sting out of retainer, 1300 # under retainer. Rd cement unit, POOH with setting tool. RIH with packer fullbore, to 4811'. Set packer. RU cement unit, try to pump into squeeze holes at 5015', press up to 2000#, couldnot pump into holes. RD Cement unit. Release packer, POOH with packer. RU wireline unit, RIH with perf gun to 4860', shot 4-squeeze hole. POOH with perf gun. RD wireline unit, RIH with cement retainer to 4809'. Set. RU cement unit, test lines to 3000#., est. rate at 1.7bpm / 750#, pump 85 sacks of cement, press down to 484# during cement pad, displace with 18bbls, press up to 1200#, sting out of retainer. 820# under retainer. RD cement unit. POOH with setting tool, RIH with packer, to 3970'. Set. load back side, 500#. Test line to 3000#. Est. Rate 1.7bpm/ 95#, pump 30 bbls of cement well on vacuum, start displace , displace with 18 bbls. Press coming up to 30#. Hesitate last 3 bbls of displ. Press up to 200#. RD cement unit. Secure well SDFN

5/30/2000 Csg. Press. 0# open well, release packer. POOH with tbg, and packer. RIH with bit, drill collars and tbg. Tag cement at 4282'. RU power swivel, est. Circulation. Drill out cement to 4390'. Cement set up real hard. Seems to be hollow . Test hole, hole did not test. 1 bbl a min. At 700# RD swivel, POOH with tbg and drill bit. Secure well SDFN.

5/31/2000 Csg press. 0# RIH with full bore packer and tbg to 4081'. Set packer. RU cement unit, load backside and press up to 500#. Test lines to 3000#. est. rate. 2bpm / 960#. Start cement. Pump 38 bbls of cement. Displace with 14 bbls of water, press up to 2000#. Had to reverse circulate 3 bbls out PU tbg 2joints. Press back on to 2000# with in .2bbls of displacement. Shut tbg in with 1000# on it. Rd cement unit. Secure well SDFN

6/1/2000 Tbg. Press. 30# blow well down, release packer and POOH with tbg. and packer. RIH with bit, drill collars and tbg. Tag up cement at 3999'. RU swivel, drill out to 4064'. Drill and clean out 65'. PU tbg to 4031'. Secure well SDFN.

6/2/2000 Csg. Press 0# RIH with tbg. Tag cement 4064'. Drill and clean out cement to 4245'. Cement still not set up to good. PU tbg. 5 Stands. Secure well SDFN.

6/5/2000 0# press. Csg. RIH with tbg, tag up on cement 4245'. RU power swivel, drill out cement 4360'. Test squeeze to 2000# held good, test for 30 mins. Rd power swivel, RIH with tbg. Tag up 4800'. Drill out cement retainer, chase to 4815'. Circulate clean. Pull up tbg to 4750'. Secure well SDFN

6/6/2000 0# press. Csg. RIH with tbg. Tag up 4815' drill out and clean out to 5185', tag up on retainer. Drill out retainer. Drill out of cement at 5200'. Clean out to 5360' tag up on comp. Plug. Circulate hole. Pull out of hole with 15 stands. Secure well SDFN

6/7/2000 Csg. Press. 0# POOH with tbg and drill collars/bit. Load csg, test to 3000# held ok. RU wireline unit. Run CBL from 5366' to 3500'. Rd wireline, send log to eng. Secure well SDFN.

6/8/2000 RIH w/3 7/8" metal muncher on 2 3/8" work sting. Unloaded hole. Drilled out composite plug @ 5360'. Cleaned out to 5390'. PUH to 5079'. SWION.

EL PASO NATURAL GAS COMPANY
AUTHORITY FOR DEVELOPMENT

To: Drilling and Petroleum Engineering Departments
The following drilling site, which is on a ☒ producing ☐ BLM ☐ non-producing lease, having been set up on our _____

and is hereby approved for drilling.
1959
99 OCT 10 AM 5 10
CITIZEN ACTION NM

Dedication: T-27-E, R-7-N, S-4-E, E.S. & M.

Section 21 W/2

Section 21 SW/4

Location: T-27-E, R-7-N, S-4-E

Containing 215.00 _____ acres, more or less

El Paso Natural Gas T-27-E - Full Gas to base of MV T-27-E - Full

Company's Interest: None

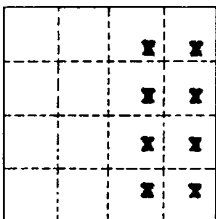
Lease or Leases and Lands Committed:

Lease Number Lessor Expires

Lease Acreage Dedicated

Working Interest Owner

Lease Number	Lessor	Expires	Lease Acreage Dedicated	Working Interest Owner
TX-221 2-200-22	State of N.M.	*	1/2 NW/4	WYNN CO.
TX-222 2-200-22	State of N.M.	*	1/2 SW/4	WYNN CO.



Formation: Pictured Cliffs - Mesaverde

WELL AUTHORIZED FOR DRILLING:

4-8-59

Original Signed H. F. STEEN

Land Department

ORIGINAL SIGNED BY
SAM SMITH

Attorneys
W. DYER MOORE, JR.
ORIGINAL SIGNED BY

Date: APR 8 1959
Title Approved for Drilling ☒
Title conditionally approved ☐
(Subject to Remarks on Reverse Side.)

4-4-59

T-27-E between El Paso and B. L. Brown.

Remarks: (Time limitations, special contractual provisions, etc.)
Held by production. Both leases fully committed to El Paso 20-7-59. Tract 200 - Subject to L&A of T-27-E between El Paso and Johnston Oil and Gas Company and L&A of

Well must be (commenced) (completed) (tied in) by _____

N/A

Rig Name and/or Number

(JRM)

Well Name and Number

El Paso 20-7-59 (JRM)

Work Order

Number 52217

Management

6/9/2000 RIH w/ 3 7/8" metal muncher. Tagged @ 5390'. Cleaned out to 5575'. Well would not flow. Tried to load hole. Well went on vacuum. SWION.

6/12/2000 POOH w/ metal muncher and tbq. SWI and secured. Prep to frac.

6/13/2000 Held safety meeting. RU BJ services. Tested lines to 3000 lb and set pop off @ 2920 lb. Frac'd point lookout w/ 3585 bbls slick water and 61,000 lb 20/40 Brady sand. Avg rate 58 bpm - avg pres 2784 psi - isip 0 psi . SWION.

6/14/2000 Held safety meeting. RU Blue Jet. RIH w/ 4 1/2 " composite plug - set @ 5375'. POOH w/ tools. Tried to test composite plug - wouldn't test. RD Blue Jet. RIH w/ tbq and pkr to 5365'. Tested composite plug to 3000 psi - held ok. MUH w/ pkr to 5340' - found hole in csg @ 5340' - 5308' - 4700' - 4375'. Pumped into hole in csg @ 3 bpm @ 900 lb. MUH w/ pkr - set @ 4330' - csg held @ 2000' - no leak off. POOH w/ tbq and pkr. SWION.

6/15/2000 Held safety meeting. RU Blue Jet. RIH w/ perforating gun - perforated the Menefee formation @ 5350' - 46' - 42' - 5298' - 94' - 5284' - 80' - 76' - 5228' - 5197' - 93' - 89' - 85' - 67' - 63' - 59' - 55' - 51' - 47' - 43' - 39' - 12' - 08' - 5097' - 93' - 60' - 56' - 50' - 5052' - w/ 2 spf. Total of 56 holes. Perforated the Cliff house formation @ 4978' - 74' - 60' - 56' - 52' - 38' - 34' - 30' - 26' - 05' - 01' - 4897' - 93' - 89' - 4885' - w/ 2 spf. Total of 30 holes. POOH w/ tools. RIH w/ tbq & treating pkr. Set pkr @ 4715'. RU BJ services. Tested lines to 3000 psi and set pop off @ 2920 acidized & balled out the Menefee & Cliffhouse formation. Pumped 3000 gals 15% HCl acid @ 5.5 bpm. Dropped 2 ball sealers per 1 bbl. Total of 128 ball sealers. Good ball action. Flushed w/ 24 bbl slick water. Balled out @ 2980' - avg treating pressure 2380' - avg rate 5.8 Bpm. RIH w/ junk basket - retrieved 119 ball sealers and had 89 hits. Rd Blue Jet. SWION.

6/16/2000 Held safety meeting. RU BJ services. Tested all lines to 3000 lb. Set pop off @ 2950 psi. Frac'd the Menefee & Cliffhouse in one single stage w/ 4559 bbl slick water & 105,520 lb of 20/40 brady sand. Avg rate 61.7 bpm - avg pressure 2789 psi - isip 656 psi. 5 min 571 psi - 10 min 505 psi - 15 min 447 psi. Opened well up to blow down tank. 140 psi on well when opened. Flowed for 30 min. Well went on vacuum. SWION.

6/19/2000 Held safety meeting. RU blouey line. Opened well. Csg pressure 330 psi. Blowed well down. RIH w/ metal muncher & tbq to 5085'. RU air unit & unloaded well. Started cleaning out Cliffhouse & Menefee. Well flowing 26 bbl fluid per hr & 1/2 gal sand per hr recovered 250 bbl water. PUH to 4480'. SWION.

6/20/2000 Held safety meeting. Csg pressure 500 psi. Opened up well. Bleed well down. RIH w/ mill - tagged sand @ 5300'. RU air unit & unloaded well. Cleaned out from 5300' to composite plug @ 5368'. Cleaned out 18' below bottom perms. Circulated hole w/ air unit. Avg pressure on air pack 550 psi - avg return fluid 20 bbl per hr & 1/2 gal sand per hr. PUH to 5001' w/ tbq. Started testing the Cliffhouse & Menefee @ 4 pm. Well loaded up & died @ 9 pm. SWION.

6/21/2000 Held safety meeting. Csg pressure 25 psi. Opened well up. RIH w/ mill to 5368'. RU air unit & unloaded well. RU swivel & run down to 5375'. Drilled out composite plug. Circulated hole w/ air pack. Avg pressure to lift fluid 600 psi. Well making 22 bbl water per hr & 1/2 gal sand per hr. Circulated well w/ air for 4 hrs. No change. POH to 4445'. SWION. Recovered 150 bbl water. Total water recovered 650 bbl.

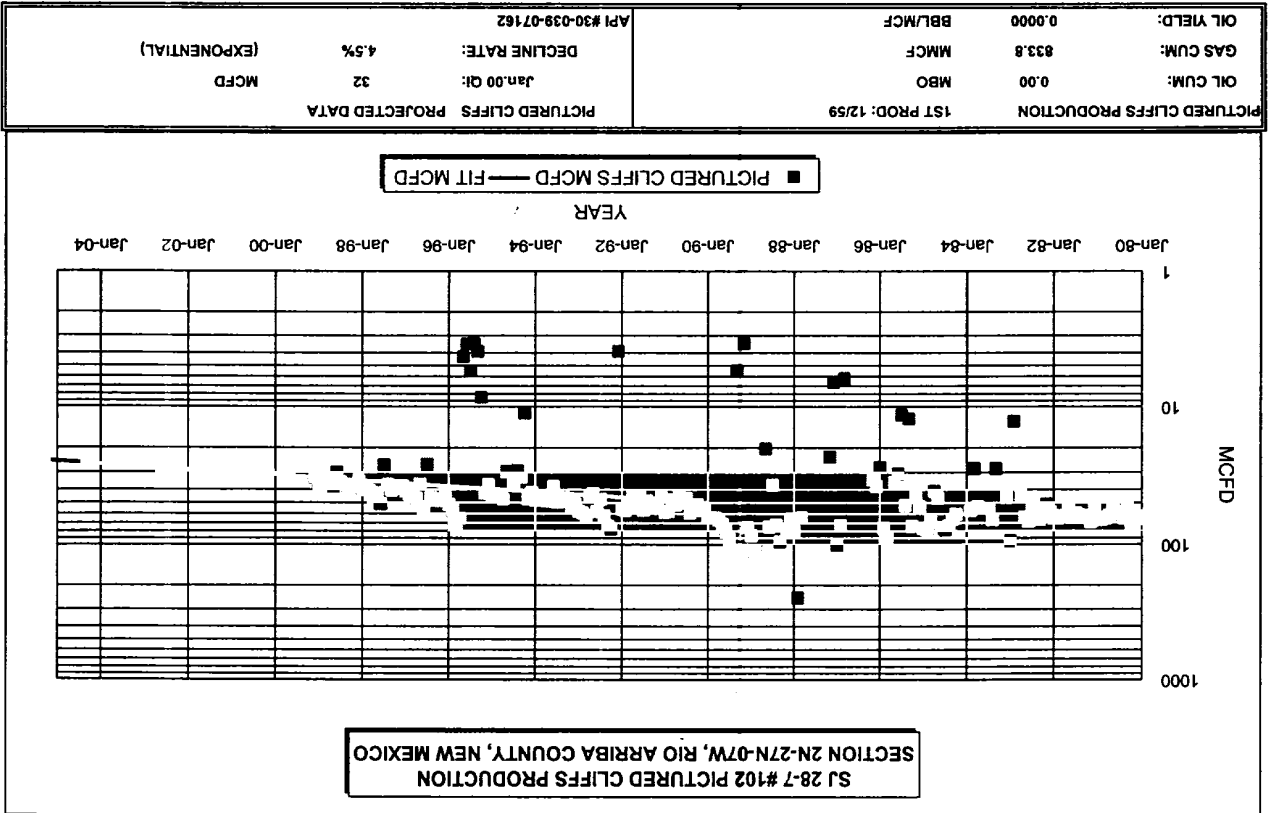
6/22/2000 Held safety meeting. Csg pressure 50 psi. Opened well up. RIH w/ mill - tagged sand @ 5494'. RU air unit & unloaded well. Cleaned out well down to 5593' - 29 ft below bottom perms on point lookout formation. Circulated hole w/ air for 2 hrs - avg 20 bbl water per hr - 1 1/2 gal sand per hr. PUH to 4675'. Circulated well w/ air down the csg & out the tbq for 1 hr. Shut Air off - well flowed for about 1 hr - well died. Recovered 200 bbl water - total water recovered 900 bbl. Swion.

6/23/2000 Held safety meeting. POOH w/ mill & tbq. RIH w/ 4 1/2" rbp & pkr no 2 3/8" tbq. Set rbp @ 4875' and pkr @ 4837'. Pressure test csg, would not hold. Could pump into hole @ 3 bpm @ 300#. Moved rbp to 4837' and pkr to 4775'. Pressure test csg. Would not hold. Could pump into hole in csg @ 2 bpm @ 1500#. Moved rbp to 4438' and pkr. to 4307'. Pressure test csg. Would not hold. Could pump into hole in csg @ 1/4 bpm @ 1500#. Moved rbp to 4314' and pkr. Pressure test csg to 1500#. Csg held ok. Moved rbp to 4870'. Isolated all perms. RU air unit and unloaded hole. Circulated hole for 2 hrs. Made 15 bph through holes in csg. POOH w/ rbp and Pkr. SWION

0	31	2000
0	29	2001
0	28	2002
0	27	2003
0	26	2004
0	24	2005
0	23	2006
0	22	2007
0	21	2008
0	20	2009
0	19	2010
0	19	2011
0	18	2012
0	17	2013
0	16	2014
0	15	2015
0	15	2016
0	14	2017
0	13	2018
0	13	2019
0	12	2020
0	12	2021
0	11	2022
0	11	2023
0	10	2024
0	10	2025
0	9	2026
0	9	2027

MID-YEAR YEAR AVG. MCFD
MID-YEAR YEAR AVG. BOPD

PRODUCTION FORECAST FOR SUBTRACTION METHOD COMMINGLED ALLOCATION



6/26/2000 Held safety meeting. Csg 500 psi. open well up. Bleed well down. RU Blue Jet. RIH w/4 1/2" composite plug and set @ 5375' above perms on Point Lookout and set composite plug @5000' above perms on Menefee. Set composite plug @4870' above perms on Cliffhouse. POOH w/ tools. Rig down Blue Jet. RIH w/ 4 1/2" cement retainer set @ 4713'. SWION

6/27/2000 Held safety meeting. Squeezed from 4713' to 4870'. RU BJ service cement pumps. Tested lines to 3000#. Ok. Loaded back side w/51 bbl water. Est rate @ 2 bpm @ 0 psi. Started cement. Pumped 50 sx premium lite + 1% caciz + 3% kcl. 18.5 bbl slurry. Displaced W/ 18 bbl of water. After displacing 15 bbl water pressured up to 1400# @ 1 bpm. Lost all pressure. Pumped 2 more bbl caught pressure 1400# @ 1 bpm . Lost all pressure. Stung out of cement retainer. POOH w/ tbg. Second squeeze from 4713' to 4340'. Est rate @ 1/8 bpm @ 1900#. RIH w/ tbg to 4690'. Pumped balanced cement plug. Pumped 7 bbl slurry. Displaced w 15 bbl water. POOH W/ tbg. Pressured up to 1500# and started squeezing @ 1/2 bpm. Pumped 2 more bbl @ 1/2 bpm @ 1500#. Shut down for 15 min. Csg Leaked off to 1466#. Pressured back up csg to 1500# held ok. Left pressure on well. SWION

6/28/2000 Held safety meeting. Csg pressure 1100#. Open well up. RIH w/ 3.875 bit & 6 drill collars 3 1/8" on 2 3/8 work string. Tagged cement @ 4259'. Drilled down to 4359'. Drilled out 100'. Shut down cement to soft. Circulated well clean and PUH to 4259'. SWION.

6/29/2000 Held safety meeting. RIH w/ 3 7/8 bit & 6 drill collars 3 1/8" on 2 3/8 work string. Tagged cement @ 4359'. Drilled out cement to 4713' down to cement retainer. Drilled 354' cement. Test upper squeeze to 500# for 30 min. Ok. SWION

6/30/2000 Held safety meeting. RIH w/ 3 7/8" bit & 6 drill collars 3 1/8" on 2 3/8" work string to 4713'. Drilled out cement retainer & cement down to 4820'. Circulated hole clean. PUH to 4700'. SWION.

7/5/2000 Held safety meeting. Opened well. RIH w/ 3 7/8" bit & 6 drill collars 3 1/8" on 2 3/8" work string to 4810'. Drilled down to composite plug @ 4870'. Tested squeeze to 500 lb for 1 hr. Held ok. SWION.

7/6/2000 Held safety meeting. POOH w/ 3 7/8" bit& 6 drill collars 3 1/8" on 2 3/8" work string. RIH w/ 3 7/8" metal muncher to 4870'. RU Air unit. Started to unload well. Air unit lost oil pump. SWION.

7/7/2000 Held safety meeting. RU air unit. Unloaded well. RIH w/ 3 7/8" metal muncher & 6 drill collars 3 1/8" on 2 3/8" work string. Drilled out composite plug that is over the Cliffhouse formation. SWION.

7/10/2000 Held safety meeting. Opened well & bleed well down. RIH w/ 3-7/8" metal muncher & 6 drill collars 3 1/8" on 2 3/8" work string to 4870'. Drilled out composite plug & cement. Drilled to 4872'. Had to shut down operation due to clutch plate bearings on work over rig. SWION.

7/11/2000 Held safety meeting. RIH w/ 3 7/8" bit & 6 drill collars 3 1/8" on 2 3/8" work string to 4872'. Drilled out plug & cement to 4874'. SWION.

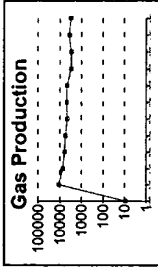
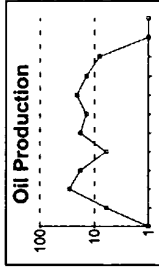
7/12/2000 Held safety meeting. Opened well up - bleed well down. RIH w 3-7/8" bit & 6 drill collars 3 1/8" on 2 3/8" work string to 4874'. Drilled cement & plug from 4874' to 4878'. Circulated hole clean. PUH, SWION.

7/13/2000 Held safety meeting. Opened well up - bleed well down. RIH w/ 3-7/8" bit & 6 drill collars 3 1/8" on 2 3/8" work string to 4878', drilled to 4880'. Shut drilling down - appears to be drilling outside of csg. Caught samples on return- appears to be shell. Came out of hole - laying 2 3/8" work string down on float. SWION.

7/14/2000 Held safety meeting. POOH w/ drill collars & 2 3/8" work string. Laid down tbg & collars on float. RIH w/ magnetic thickness too L. Logged from 4874' to 4000'. MTT log showed hole in csg @ 4874'. Log showed bad csg from 4874' to 4300'. SWION.

7/17/2000 Held safety meeting. RDMO.

Lease:	SAN JUAN 28 7 UNIT	Well #:	102	FP Date:	59-11
Field:	BLANCO (MESAVARDE) MV	Location:	2N 27N 7W	LP Date:	99-02
Operator:	CONOCO INC	Liquid Cum:	6,919 bbls	Liq Since:	FPDATE
RCI #:	251,039,27N07W02N00MV	Gas Cum:	2,538,076 mcf	Gas Since:	FPDATE
API #:	30-039-07162-00	Status:	ACT GAS		



DATE	OIL, BBLs	GAS, MCF	WATER, BBLs	WELLS
03/1998	1	9	0	1
04/1998	6	11,153	0	1
05/1998	29	7,229	0	1
06/1998	18	5,967	0	1
07/1998	6	5,350	0	1
08/1998	18	4,422	0	1
09/1998	14	4,700	0	1
10/1998	21	4,626	0	1
11/1998	14	2,939	0	1
12/1998	8	2,949	0	1
01/1999	0	3,544	0	1
02/1999	1	3,090	0	1
Total	136	55,978	0	