

B. & R. SERVICE, INC.

TEMPERATURE SURVEY

COMPANY EL PASO NATURAL GAS COMPANY
WELL #69 DAKOTA **FIELD** SAN JUAN 27-4 UNIT
COUNTY RIO ARRIBA **STATE** NEW MEXICO
SEC. NE 21 **TWP.** 27 N **RGE.** 4 W
APPROX. TOP CEMENT 3450'

Survey Begins at 3000' **Ft. Ends at** 8461' **Ft.**
Approx. Fill-Up **Max. Temp.** 179° @ 8461'
Log Measured From R. T. **Run No.** 1

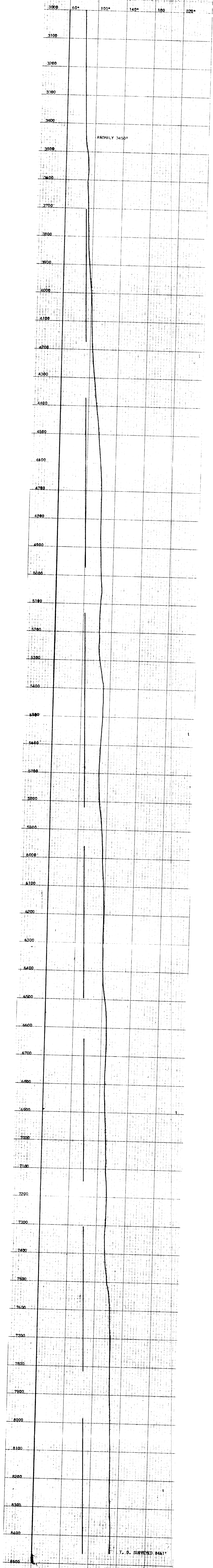
Casing Size	Casing Depth	Diam of Hole	Depth
4 1/2" from	to 8463'	6 1/2" from	to
from	to	from	to

Date of Cementing 4-20-72 **Time** 6:30 AM
Date of Survey 4-24-72 **Time** 2:30 PM
Amount of Cement 245 SK QA w/5% SIL & SUPT. FINE SIL/SK & 0.5% HR4 (524 cu.ft.) 180SK QA w/1/2# FINE TSP-PLUS/SK & 0.4% HR4 (115 cu.ft.)
Recorded by SMITH **Witnessed by**

REMARKS OR OTHER DATA

RECEIVED
 MAY 2 1972
 OIL CON. COM.
 DIST. 3

TEMPERATURE IN DEGREES FAHRENHEIT



T. D. SURVEYED 8461'