

State of New Mexico

Energy, Minerals and Natural Resources Department

OIL CONSERVATION DIVISION
P. O. Box 2088
Santa Fe, New Mexico 87504-2088

APPLICATION FOR PERMIT TO DRILL, DEEPEN,
OR PLUG BACK

API NO. (assigned by OCD on new well

5. Indicate Type of Lease
FEE

6. State Oil & Gas Lease No.

1a. Type of Work

PLUG BACK

b. Type of Well
GAS

7. Lease Name or Unit Agreement Name

SAN JUAN 27-5 UNIT

2. Name of Operator

MERIDIAN OIL INC.

8. Well No.

153

3. Address of Operator

P. O. BOX 4289
FARMINGTON, NM 87499

9. Pool Name or Wildcat

BASIN FRUITLAND COAL

4. Well Location

SEC. 21, ~~21TH~~, R05W, N.M.P.M.

1460' FNL; 1680' FWL

10. Proposed Depth

11. Formation

12. Rotary or C.T.

13. Elevation

6561' GL

14. Bond Type

15. Drill Contractor

16. Est. Start Date

17. PROPOSED CASING AND CEMENT PROGRAM

SIZE HOLE

SIZE CASING

WT. PER FT.

SET. DEPTH

SKS OF CEMENT

EST. TOP

I hereby certify that the information above is true and complete to the best of my knowledge and belief.

SIGNATURE

[Signature]

(JBK)

TITLE

[Signature]

DATE

7-24-90

(This space for State Use)

APPROVED BY

[Signature]

TITLE

DATE

Conditions of approval, if any:

Hold C-100 FOR NSC

Submit to Appropriate
District Office
State Lease - 4 copies
Fee Lease - 3 copies

State of New Mexico
Energy, Minerals and Natural Resources Department

Form C-102
Revised 1-1-89

OIL CONSERVATION DIVISION

P.O. Box 2088

Santa Fe, New Mexico 87504-2088

DISTRICT I

P.O. Box 1980, Hobbs, NM 88240

DISTRICT II

P.O. Drawer DD, Artesia, NM 88210

DISTRICT III

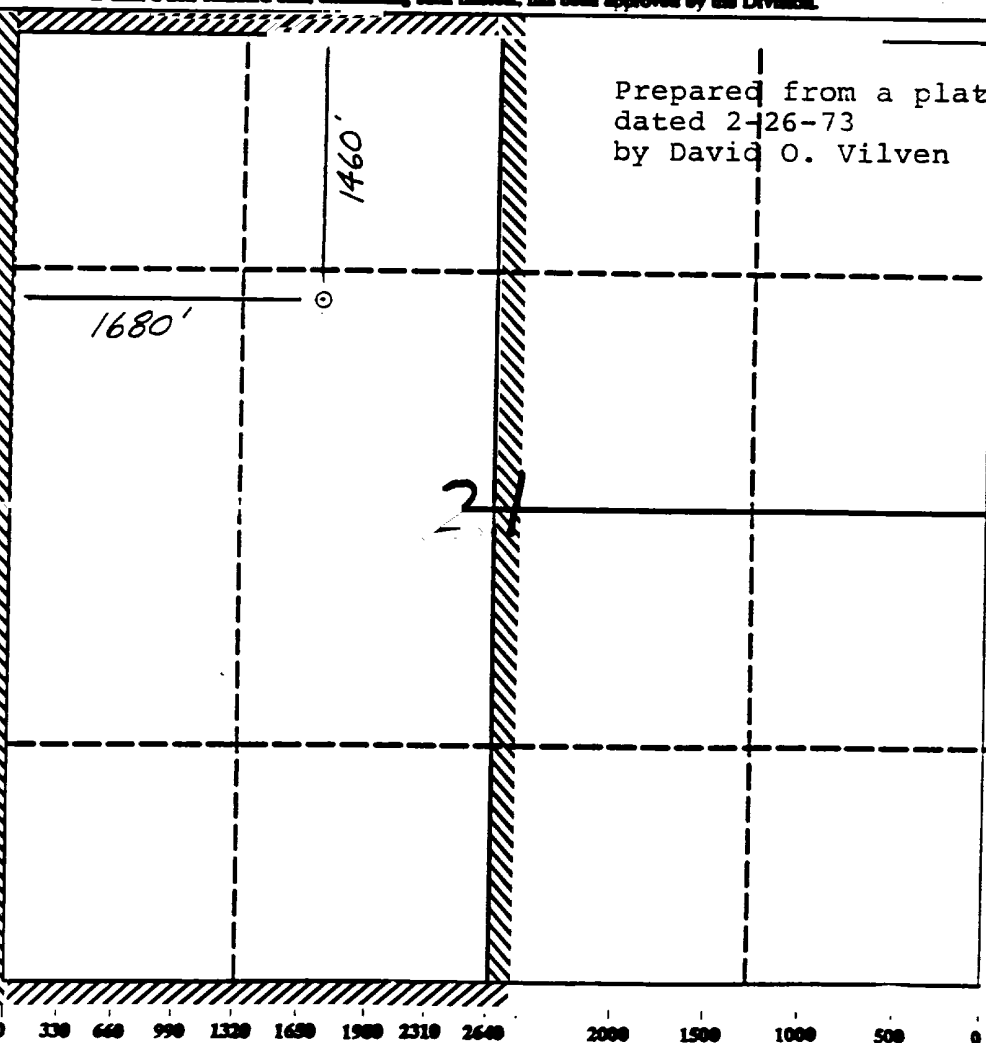
1000 Rio Brazos Rd., Aztec, NM 87410

WELL LOCATION AND ACREAGE DEDICATION PLAT

All Distances must be from the outer boundaries of the section

Operator Meridian Oil Inc.			Lease San Juan 27-5 Unit (Fee)		Well No. 153
Unit Letter F	Section 21	Township 27N	Range 5W	County Rio Arriba	
Actual Footage Location of Well: 1460 feet from the North line and 1680 feet from the West line					
Ground level Elev. 6561'	Producing Formation Fruitland Coal		Pool Basin	Dedicated Acreage: 320 Acres	

1. Outline the acreage dedicated to the subject well by colored pencil or hectare marks on the plat below.
2. If more than one lease is dedicated to the well, outline each and identify the ownership thereof (both as to working interest and royalty).
3. If more than one lease of different ownership is dedicated to the well, have the interest of all owners been consolidated by communitization, unitization, force-pooling, etc.?
☒ Yes ☐ No If answer is "yes" type of consolidation unitization
If answer is "no" list the owners and tract descriptions which have actually been consolidated. (Use reverse side of this form if necessary).
No allowable will be assigned to the well until all interests have been consolidated (by communitization, unitization, force-pooling, or otherwise) or until a non-standard unit, eliminating such interest, has been approved by the Division.



OPERATOR CERTIFICATION

I hereby certify that the information contained herein is true and complete to the best of my knowledge and belief.

Signature
Peggy Bradfield

Printed Name
Regulatory Affairs

Position
Meridian Oil Inc.

Company
7-24-90

Date

SURVEYOR CERTIFICATION

I hereby certify that the well location shown on this plat was plotted from field notes of actual surveys made by me or under my supervision, and that the same is true and correct to the best of my knowledge and belief.

Date Surveyed

Signature
Professional



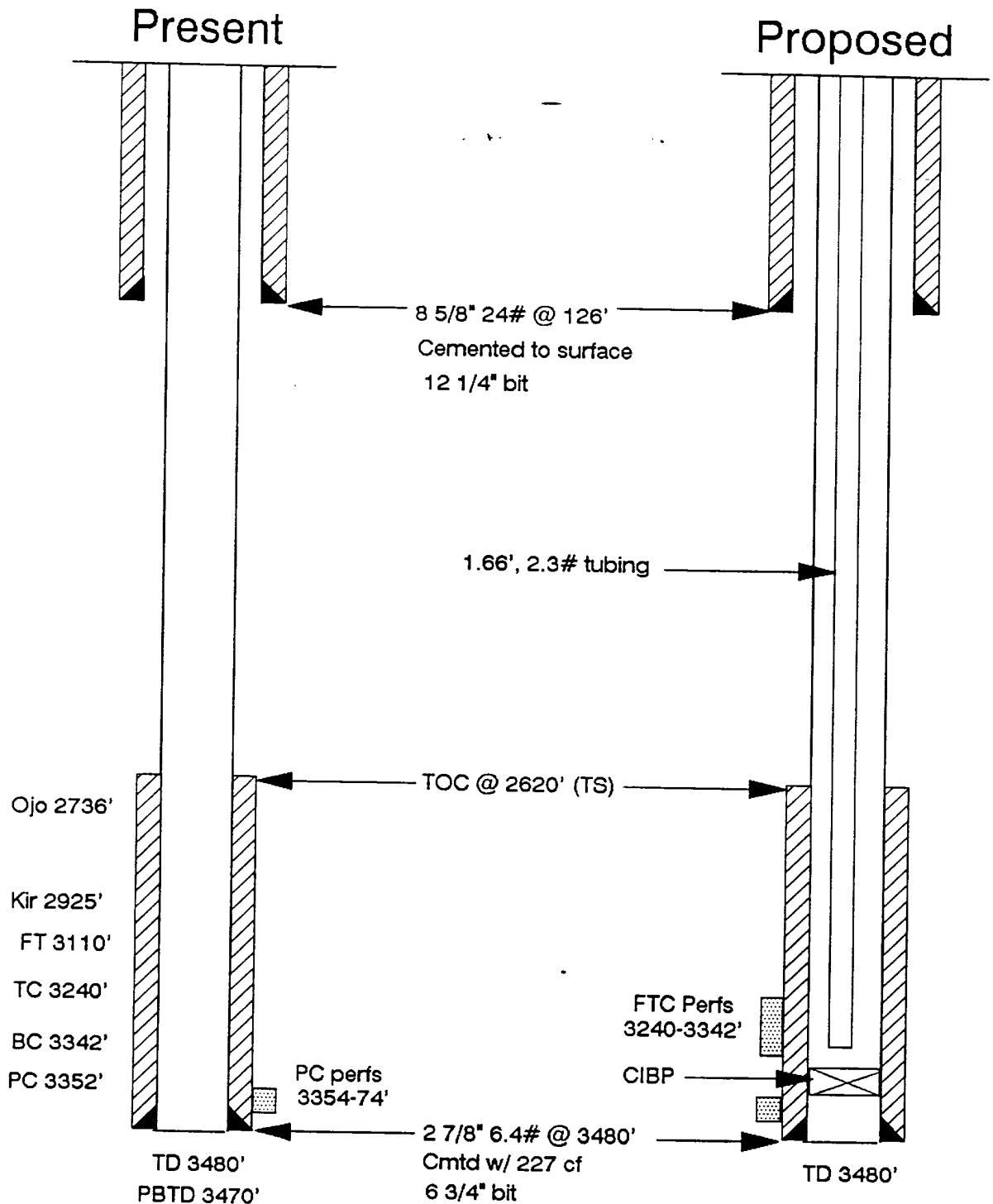
Certificate
Neale Edwards

**San Juan 27-5 Unit #153
Recompletion Procedure**

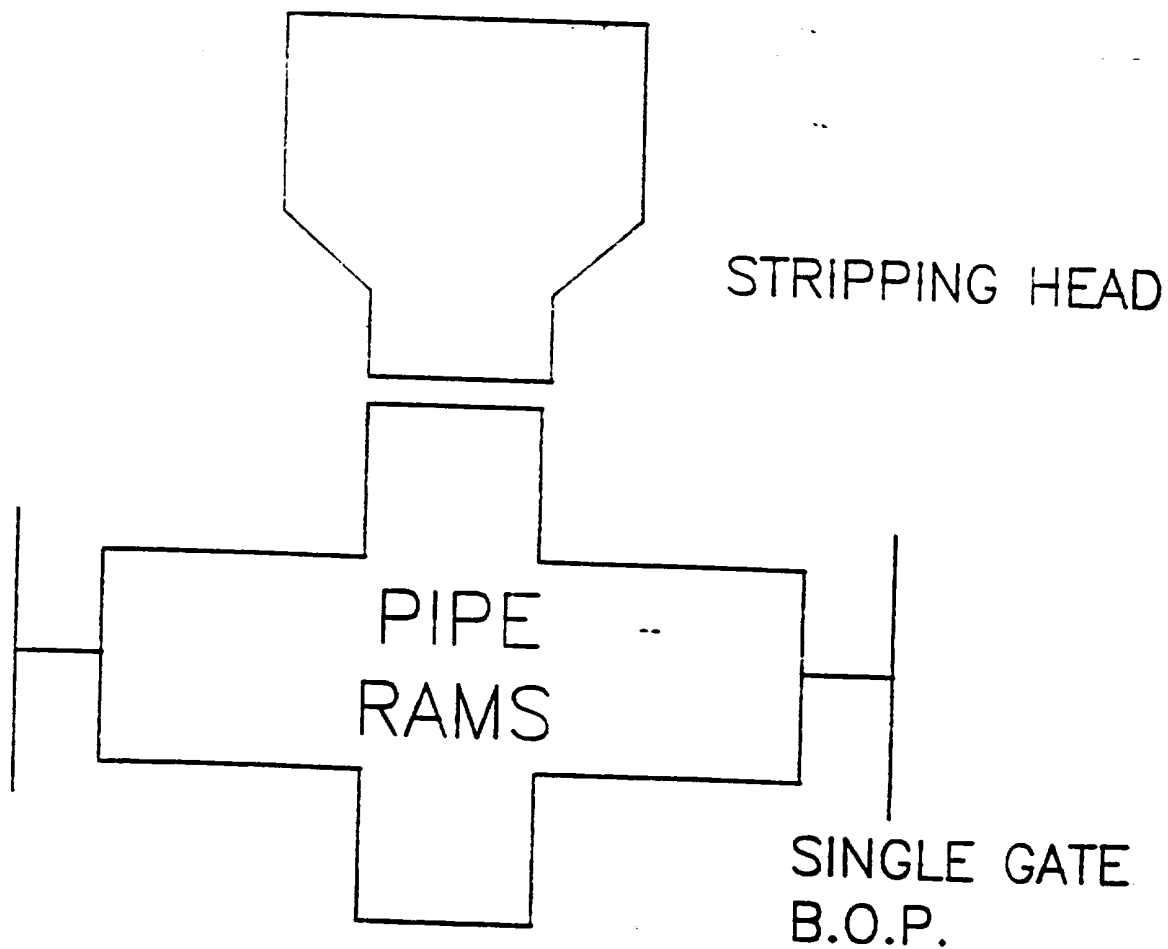
1. Prepare location and install or repair location anchors as necessary.
2. MIRU. Hold safety meeting and place fire and safety equipment in strategic locations. Install blow lines.
3. ND WH. NU BOP. Replace wellhead with 2000 psi independent type wellhead if necessary. PU 1-13/16" drill pipe and 2-7/8" 6.4# casing scraper. CO to top of perforations at 3354'. TOOH.
4. TIH with work string and RBP. Set BP @ 3350'. TOOH. Pressure test casing and BP to 500 psi. If casing fails TIH with work string and packer. Locate failure to within one joint. Repair or P&A will be evaluated at this time. A P&A procedure will be provided, but if repair is possible, proceed with the following steps. If casing does not fail initial pressure test, retrieve BP and swab well in. Return well to production.
5. TOOH with work string and packer. ND BOP. RU wireline and Baker tubing inspectors. RIH with small charge on biwire. The charge must be small enough not to burst or split the casing. Load bradenhead with water then fire the charge and back off casing 3 joints below the failure. TOOH with casing. Inspect casing while tripping out and replace bad joints as necessary.
6. TIH with 2-7/8" casing with guide shoe on bottom. Screw casing back together and land it in the wellhead slips. Cut off casing and NU BOP. Pressure test casing to 3000 psi. TIH with work string and retrieve BP. TOOH.
7. RU wireline. Run NL-GR-CCL. Pick perforations from log. Set CIBP on wireline above PC perfs.
8. Perforate at depths determined from logs.
9. TIH with BP and packer and breakdown perforations. TOOH.
10. ND BOP. NU 5000 psi frac valve. TIH with 2 joints of tubing and RBP. TOOH. Pressure test frac valve to 3000 psi. TIH and retrieve RBP. TOOH.
11. Fracture stimulate the well.
12. SI well for 4 hours. NU BOP. TIH with tubing and clean out to PBTD. Flow well back slowly. If necessary, circulate with air until well flows on its own.
13. CO to PBTD. RU wireline. Run after frac gamma ray from PBTD to 3200'.
14. PU and RIH with 1.66", 2.3# tubing. Tag PBTD. Land tubing at 3340'. Report final gauge.
15. RDMO. SI for pressure buildup.

San Juan 27-5 Unit #153 Fruitland Coal Recompletion

Elev: 6561' GR



WORKOVER / RECOMPLETION B. O. P. SCHEMATIC



MINIMUM: 2 7/8" 1500 PSI SINGLE GATE B.O.P.

MAXIMUM ANTICIPATED SHUT-IN WELLHEAD
PRESSURE IS LESS THAN 1500 PSI