

San Juan 27-5 Unit #156

Proposed P&A

Asset No. 4462401

Tapacito Pictured Cliffs

NE, Section 22, T-27-N, R-5-W, Rio Arriba County, NM

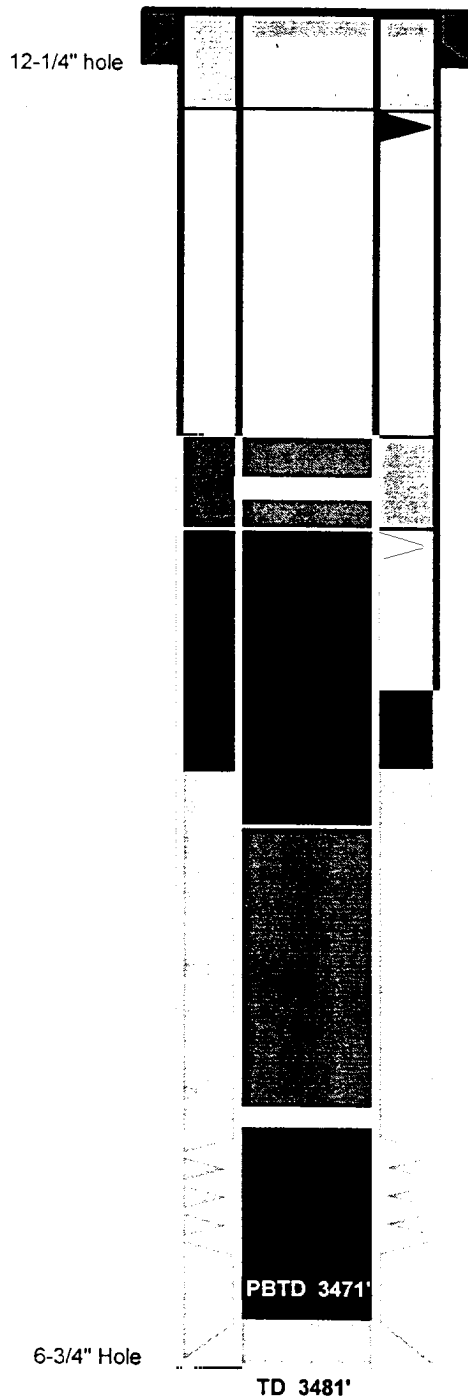
Lat 36 - 33.65022' / Long 107 - 20.49318'

Today's Date: 11/22/99

Spud: 5/22/73

Completed: 7/17/73

Elevation: 6554' (GL)
6565' (KB)



Perforate @ 178'

Plug #3 178' - Surface
Cmt with 60 sxs Class B

Plug #2 1605' -1505'
Cmt with 40 sxs Class B,
35 sxs outside casing
and 5 sxs inside.

Cmt Retainer @ 1555'

Perforate @ 1605'

TOC @ 2500' (T.S.)

Plug #1 3310' -2660'
Cmt with 20 sxs Class B,
(2 10 sxs stages)

Set CIBP @ 3310'

Pictured Cliffs Perforations:
3360' -3386' (34 holes)

2-7/8" 6.4#, J-55 Csg set @ 3481'
Cmt with 115 sx