

UNITED STATES  
DEPARTMENT OF THE INTERIOR  
GEOLOGICAL SURVEY30-039-20671  
5. LEASE DESIGNATION AND SERIAL NO.  
SF 079391

## APPLICATION FOR PERMIT TO DRILL, DEEPEN, OR PLUG BACK

## 1a. TYPE OF WORK

DRILL ☒DEEPEN ☐PLUG BACK ☐

## b. TYPE OF WELL

OIL  
WELL ☐GAS  
WELL ☒

OTHER

SINGLE  
ZONE ☒MULTIPLE  
ZONE ☐

## 2. NAME OF OPERATOR

El Paso Natural Gas Company

## 3. ADDRESS OF OPERATOR

PO Box 990, Farmington, NM 87401

## 4. LOCATION OF WELL (Report location clearly and in accordance with any State requirements.)\*

At surface

1650'S, 1190'W

At proposed prod. zone

## 6. IF INDIAN, ALLOTTEE OR TRIBE NAME

## 7. UNIT AGREEMENT NAME

San Juan 27-5 Unit

## 8. FARM OR LEASE NAME

San Juan 27-5 Unit

## 9. WELL NO.

163

## 10. FIELD AND POOL, OR WILDCAT

Basin Dakota

11. SEC., T., R., M., OR BLK.  
AND SURVEY OR AREASec. 18, T-27-N, R-5-W  
NMPM

## 12. COUNTY OR PARISH

Rio Arriba

## 13. STATE

New Mexico

## 14. DISTANCE IN MILES AND DIRECTION FROM NEAREST TOWN OR POST OFFICE\*

## 15. DISTANCE FROM PROPOSED\*

LOCATION TO NEAREST  
PROPERTY OR LEASE LINE, FT.  
(Also to nearest drlg. unit line, if any)

## 16. NO. OF ACRES IN LEASE

17. NO. OF ACRES ASSIGNED  
TO THIS WELL

320.00 321.08

18. DISTANCE FROM PROPOSED LOCATION\*  
TO NEAREST WELL, DRILLING, COMPLETED,  
OR APPLIED FOR, ON THIS LEASE, FT.

## 19. PROPOSED DEPTH

7659'

## 20. ROTARY OR CABLE TOOLS

Rotary

## 21. ELEVATIONS (Show whether DF, RT, GR, etc.)

6447'GL

## 22. APPROX. DATE WORK WILL START\*

## 23. PROPOSED CASING AND CEMENTING PROGRAM

SIZE OF HOLE	SIZE OF CASING	WEIGHT PER FOOT	SETTING DEPTH	QUANTITY OF CEMENT
13 3/4"	9 5/8"	32.30#	200'	220 cu. ft. to circulate to surface
8 3/4"	7"	20#	3500'	230 cu. ft. to cover Ojo Alamo
6 1/4"	4 1/2"	10.5#&11.6#	7659'	640 cu. ft. to fill to intermediate casing

Selectively perforate and sandwater fracture the Dakota formation.

The W/2 of Section 18 is dedicated to this well.



IN ABOVE SPACE DESCRIBE PROPOSED PROGRAM: If proposal is to deepen or plug back, give data on present productive zone and proposed new productive zone. If proposal is to drill or deepen directionally, give pertinent data on subsurface locations and measured and true vertical depths. Give blowout preventer program, if any.

24.

SIGNED

*M. G. Larios*

TITLE

Drilling Clerk

DATE June 20, 1973

(This space for Federal or State office use)

PERMIT NO.

APPROVAL DATE

APPROVED BY

*Gu*

TITLE

DATE

CONDITIONS OF APPROVAL, IF ANY:

\*See Instructions On Reverse Side

**NEW MEXICO OIL CONSERVATION COMMISSION  
WELL LOCATION AND ACREAGE DEDICATION PLAT**

Form C-102  
Supersedes C-128  
Effective 1-1-65

All distances must be from the outer boundaries of the Section.

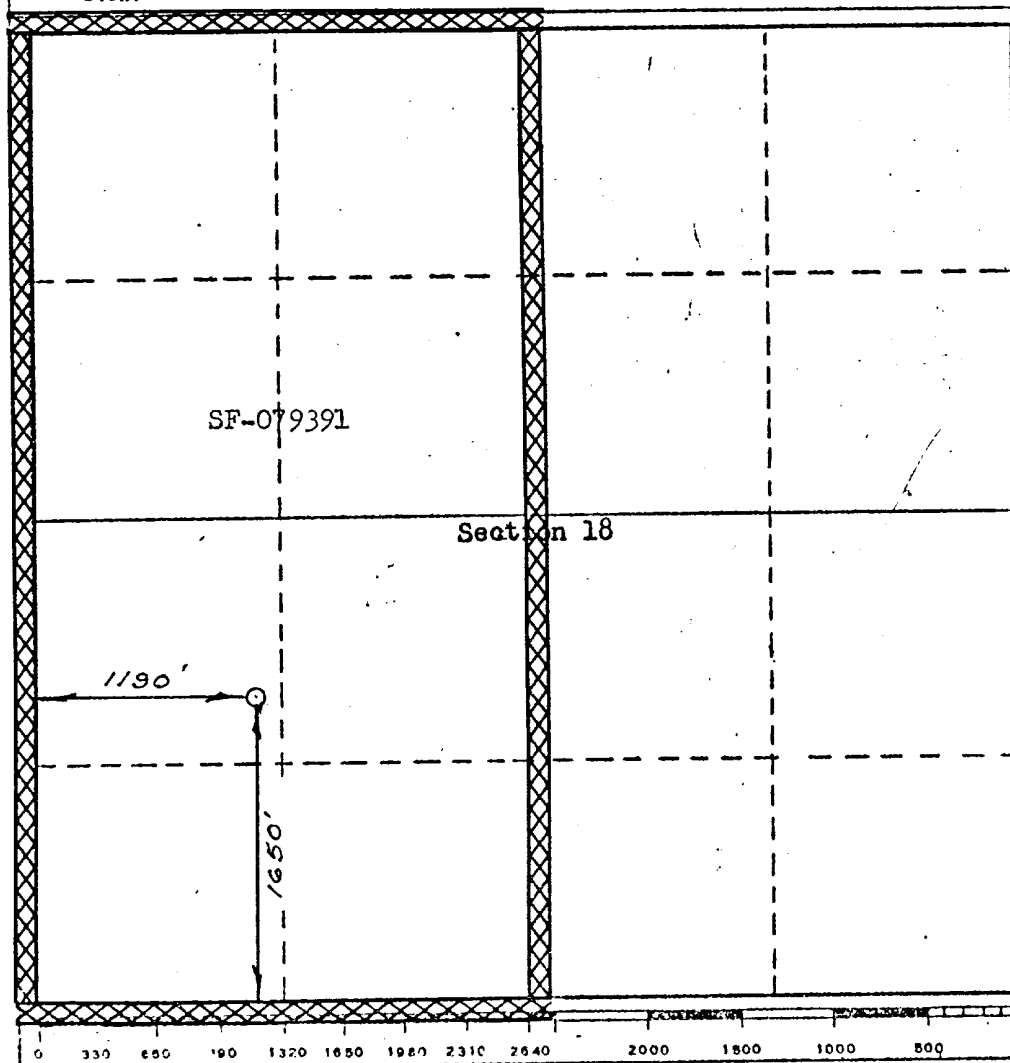
Operator <b>El Paso Natural Gas Company</b>			Lease <b>SAN JUAN 27-5 UNIT (SF-079391)</b>		Well No. <b>163</b>
Unit Letter: <b>L</b>	Section <b>18</b>	Township <b>27 North</b>	Range <b>5 West</b>	County <b>Rio Arriba</b>	
Actual Footage Location of Well: <div style="display: flex; justify-content: space-between;"> <span><b>1650</b> feet from the <b>South</b> line and <b>1190</b> feet from the <b>West</b> line</span> </div>					
Ground Level Elev: <b>6447</b>	Producing Formation <b>DAKOTA</b>	Pool <b>BASIN DAKOTA</b>	Dedicated Acreage: <b>320.00 321.08</b>		

1. Outline the acreage dedicated to the subject well by colored pencil or hachure marks on the plat below.
2. If more than one lease is dedicated to the well, outline each and identify the ownership thereof (both as to working interest and royalty).
3. If more than one lease of different ownership is dedicated to the well, have the interests of all owners been consolidated by communitization, unitization, force-pooling, etc?

☒ Yes    ☐ No    If answer is "yes," type of consolidation **Unitization**

If answer is "no," list the owners and tract descriptions which have actually been consolidated. (Use reverse side of this form if necessary.) \_\_\_\_\_

No allowable will be assigned to the well until all interests have been consolidated (by communitization, unitization, forced-pooling, or otherwise) or until a non-standard unit, eliminating such interests, has been approved by the Commission.



**CERTIFICATION**

*I hereby certify that the information contained herein is true and complete to the best of my knowledge and belief.*

Original Signed by  
**D. G. Brisco**

Name **Drilling Clerk**

Position **El Paso Natural Gas Co.**

Company **June 20, 1973**

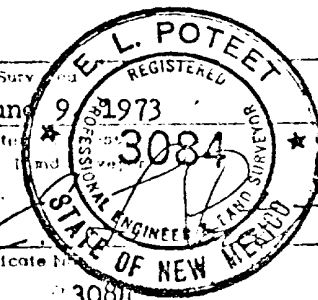
Date

*I hereby certify that the well location shown on this plat was plotted from field notes of actual surveys made by me or under my supervision, and that the same is true and correct to the best of my knowledge and belief.*

Date Surveyed  
**June 9 1973**

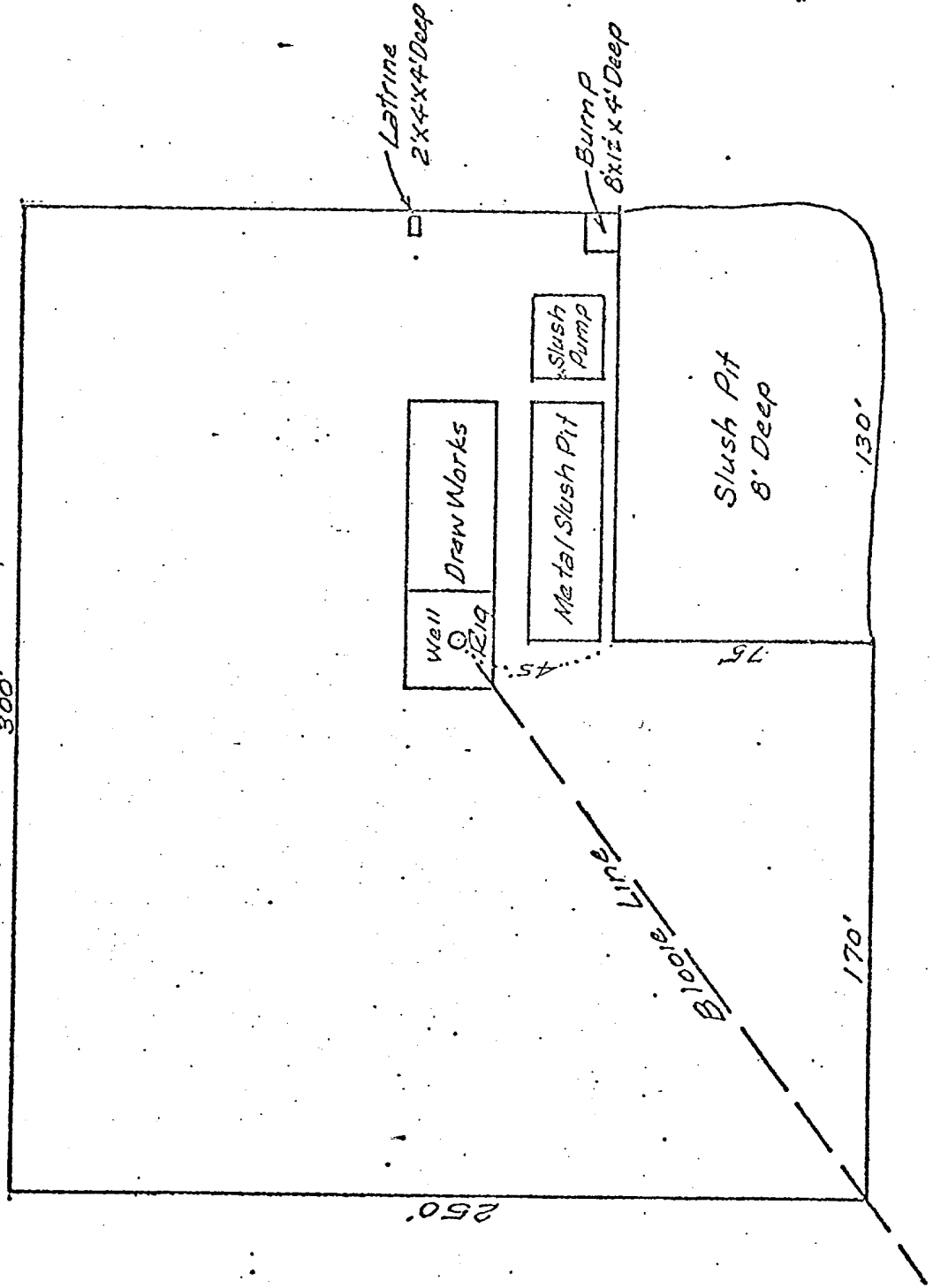
Registered and  
**3084**

Certificate No.



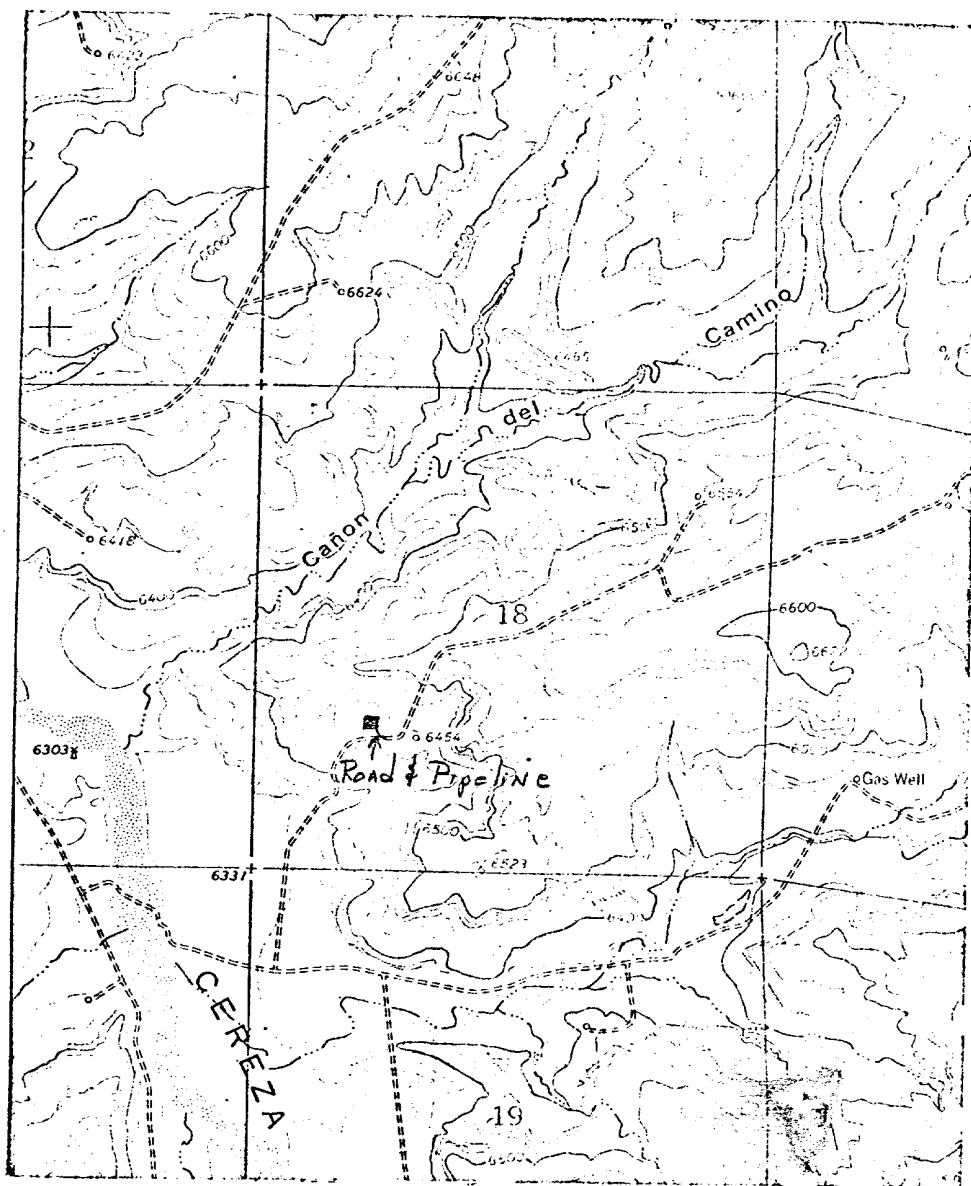
SAN JUAN 27-5 UNIT No. 163

*[Handwritten signature]*



SAN JUAN 27-5 UNIT No. 163

SW/4 Sec. 18, T-27-N, R-5-W



T  
27  
N

R-5-W