

UNITED STATES
DEPARTMENT OF THE INTERIOR
GEOLOGICAL SURVEY

APPLICATION FOR PERMIT TO DRILL, DEEPEN, OR PLUG BACK

1a. TYPE OF WORK

DRILL ☒DEEPEN ☐PLUG BACK ☐

b. TYPE OF WELL

OIL
WELL ☐GAS
WELL ☒

OTHER

SINGLE
ZONE ☒MULTIPLE
ZONE ☐

2. NAME OF OPERATOR

El Paso Natural Gas Company

3. ADDRESS OF OPERATOR

PO Box 990, Farmington, NM 87401

4. LOCATION OF WELL (Report location clearly and in accordance with any State requirements.*)

At surface

1090'S, 1600'E

At proposed prod. zone

14. DISTANCE IN MILES AND DIRECTION FROM NEAREST TOWN OR POST OFFICE*

15. DISTANCE FROM PROPOSED*

LOCATION TO NEAREST
PROPERTY OR LEASE LINE, FT.
(Also to nearest drig. unit line, if any)18. DISTANCE FROM PROPOSED LOCATION*
TO NEAREST WELL, DRILLING, COMPLETED,
OR APPLIED FOR, ON THIS LEASE, FT.

21. ELEVATIONS (Show whether DF, RT, GR, etc.)

6606'GL

16. NO. OF ACRES IN LEASE

19. PROPOSED DEPTH

3600'

17. NO. OF ACRES ASSIGNED
TO THIS WELL

160.00

20. ROTARY OR CABLE TOOLS

Rotary

22. APPROX. DATE WORK WILL START*

23.

PROPOSED CASING AND CEMENTING PROGRAM

SIZE OF HOLE	SIZE OF CASING	WEIGHT PER FOOT	SETTING DEPTH	QUANTITY OF CEMENT
12 1/4"	8 5/8"	24.0#	120'	110 cu. ft. to circ. to surface
6 3/4"	2 7/8"	6.4#	3600'	240 cu. ft. to cover Ojo Alamo

Selectively perforate and sandwater fracture the Pictured Cliffs formation.

The SE/4 of Section 24 is dedicated to this well.

*Surface is privately owned. Approval of
Fee owner has been obtained by El Paso*

IN ABOVE SPACE DESCRIBE PROPOSED PROGRAM: If proposal is to deepen or plug back, give data on present productive zone and proposed new productive zone. If proposal is to drill or deepen directionally, give pertinent data on subsurface locations and measured and true vertical depths. Give blowout preventer program, if any.

24.

SIGNED

A. G. Brisco

TITLE

Drilling Clerk

DATE

June 21, 1973

(This space for Federal or State office use)

PERMIT NO.

APPROVAL DATE

APPROVED BY

TITLE

CONDITIONS OF APPROVAL, IF ANY:

RECEIVED

JUN 22 1973

U. S. GEOLOGICAL SURVEY
DURANGO, COLO.

*See Instructions On Reverse Side

NEW MEXICO OIL CONSERVATION COMMISSION
WELL LOCATION AND ACREAGE DEDICATION PLAT

Form 1-10-1
Supersedes C-126
Effective 1-1-15

All distances must be from the outer boundaries of the Section

EL PASO NATURAL GAS COMPANY			SAN JUAN 27-5 UNIT (SF-079492-B)			157
0	24	27-N	5-W	RIO ARRIBA		
1090	SOUTH	1600		EAST		
6606	PICTURED CLIFFS	TAPACITO PICTURED CLIFFS		160.00		

1. Outline the acreage dedicated to the subject well by colored pencil or hatchure marks on the plat below.


2. If more than one lease is dedicated to the well, outline each and identify the ownership thereof (both as to working interest and royalty).

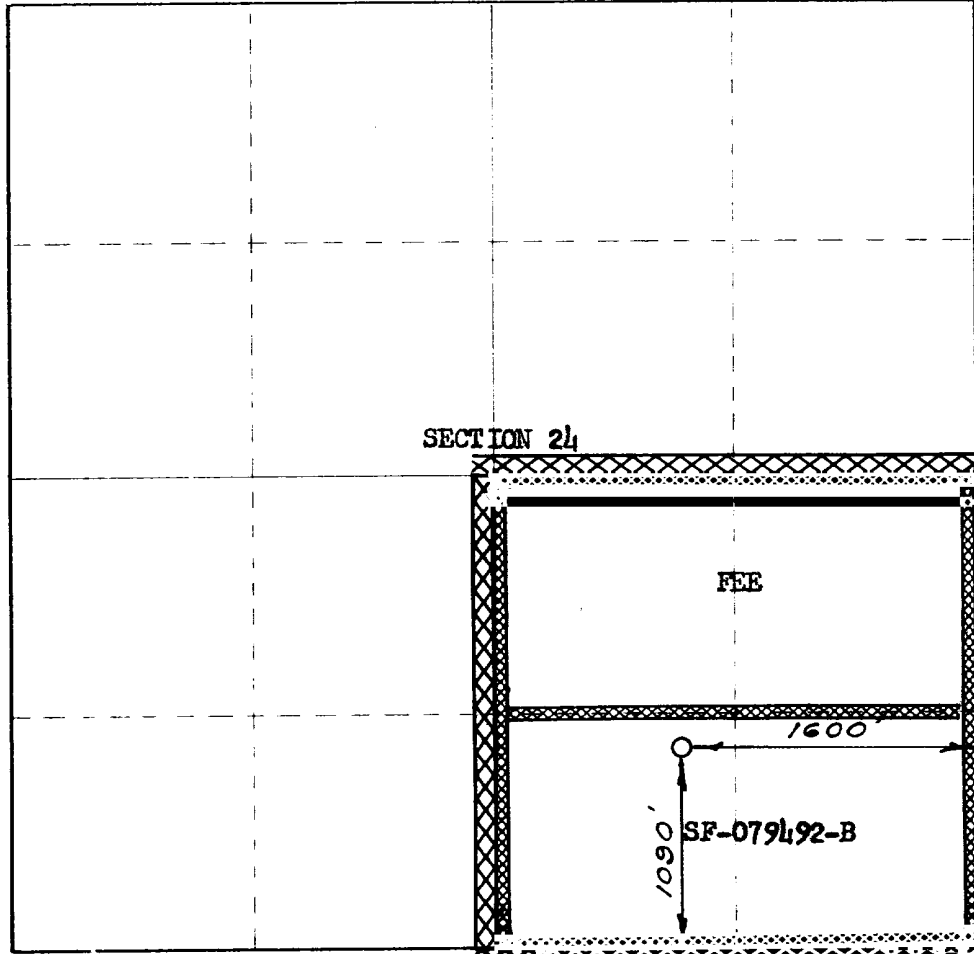
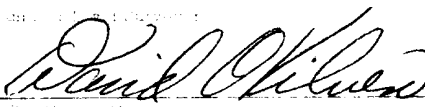
3. If more than one lease of different ownership is dedicated to the well, have the interests consolidated by communitization, unitization, force-pooling, etc?

☒ Yes ☐ No If answer is "yes," type of consolidation _____

If answer is "no," list the owners and tract descriptions which have actually been consolidated, (use reverse side of this form if necessary.) _____

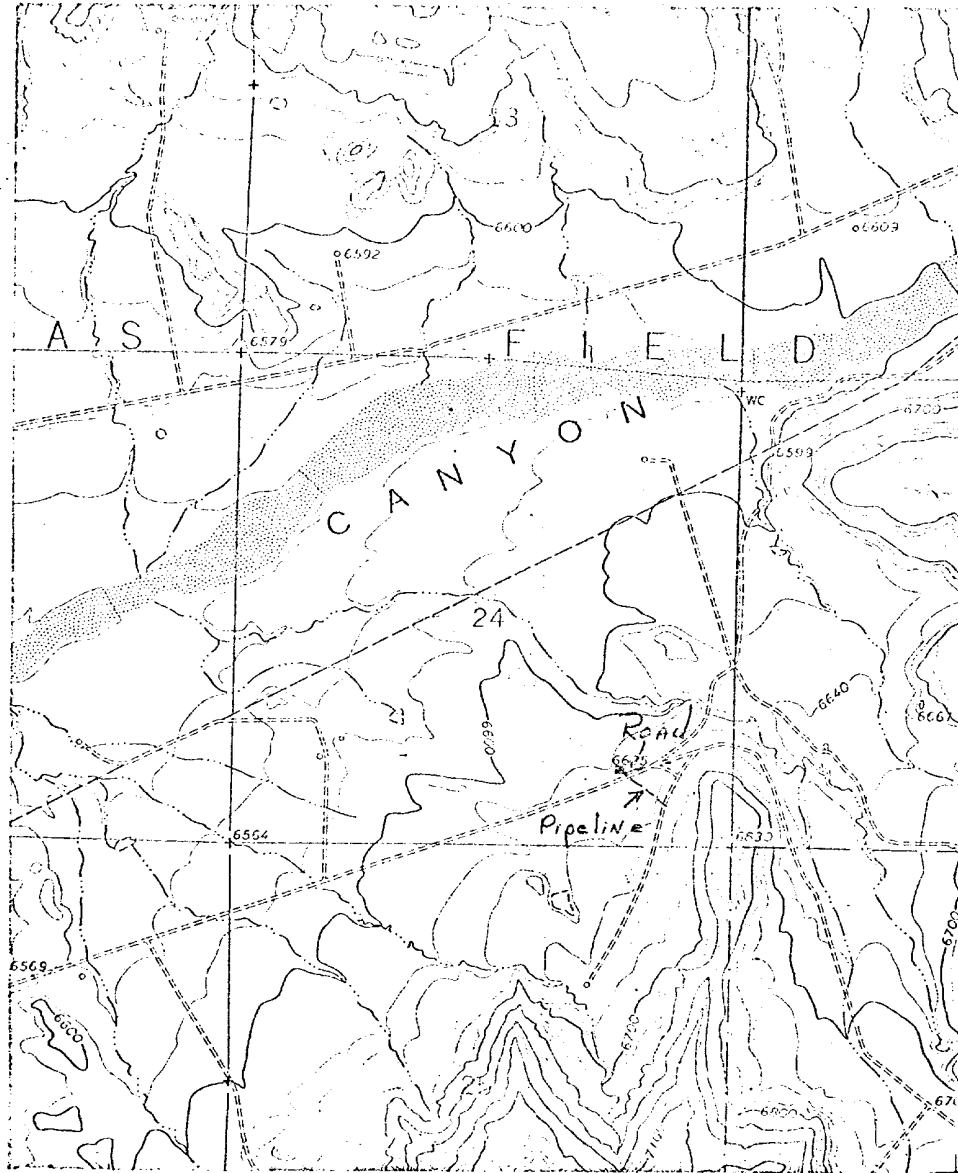
No allowable will be assigned to the well until all interests have been consolidated (by communitization, unitization, forced-pooling, or otherwise) or until a non-standard unit, eliminating such interests, has been approved by the Commission.



 <p>SECTION 24</p> <p>FEE</p> <p>SF-079492-B</p> <p>1090'</p> <p>1600'</p> <p>1760'</p>	CERTIFICATION I hereby certify that the information contained herein is true and complete to the best of my knowledge and belief. Original Signed by D. G. Brisco Drilling Clerk El Paso Natural Gas Co. June 21, 1973
	I hereby certify that the well location shown on this plat was plotted from field notes of actual surveys made by me or under my supervision, and that the same is true and correct to the best of my knowledge and belief. JUNE 1, 1973  1760

SAN JUAN 27-5 Unit No. 157

SE/4 Sec. 24, T-27-N, R-5-W



T
27
N

R-5-W

SAN JUAN 27-5 UNIT No. 157

