

55 MAR 22 AM 9:10

070ION, NM

5. **Lease Number**
SF-079492B

6. If Indian, All. or
Tribe Name

7. Unit Agreement Name

San Juan 27-5 Unit

8. Well Name & Number

Type of Action

X Abandonment

Recompletion

Plugging Back

Casing Repair

Altering Casing

Other -

Change of Plans

 New Construction

Non-Routine Fracturing

Water Shut off

Conversion to Injection

San Juan 27-5 U #157

9. API Well No.

30-039-20676

10. Field and Pool

Tapacito Pictured Cliffs

11. County and State

Rio Arriba Co., NM

RECEIVED
APR - 1 1996
OIL CON. DIV.
DIST. 3

Signed James D. Drachman (ROS3) Title Regulatory Administrator Date 3/20/96

APPROVED BY _____ Title _____

CONDITION OF APPROVAL, if any:

APPROVED

NMOC


PLUG & ABANDONMENT PROCEDURE

**San Juan 27-5 #157
Tapacito Pictured Cliffs
SE Section 24, T-27-N, R-5-W
Rio Arriba, New Mexico**

Note: All cement volumes use 100% excess outside pipe and 50' excess inside pipe. The stabilizing wellbore fluid will be 8.3 ppg, sufficient to balance all exposed formation pressures.

1. Install and test location rig anchors. Prepare blow pit. Comply to all NMOCD, BLM, and MOI regulations.
2. MOL and RU daylight pulling unit. Conduct safety meeting for all personnel on location. NU relief line. Blow down well and kill with water as necessary. ND wellhead and NU BOP. Test BOP.
3. PU and RIH w/1-1/4" tubing. Tag CIBP @ 3300'. Load hole with water and pressure test 2-7/8" casing to 500 psi.
4. **Plug #1 (Pictured Cliffs, Fruitland, and Kirtland tops, 3300' - 3000'):** Mix and pump 10 sx class B cement. Spot a balanced cement plug on top of CIBP at 3300'. POOH.
5. **Plug #2 (Ojo Alamo top, 2693' - 2593'):** Perforate 2 holes @ 2693'. Establish rate into perforations. Mix 40 sx class B cement and pump down 2-7/8" casing. Displace cement to 2593' (Squeeze 35 sx outside casing and leave 5 sx inside casing). WOC. RIH with wireline and tag plug.
6. **Plug #3 (Nacimiento top, 950' - 850'):** Perforate 2 holes @ 950'. Establish rate into perforations. Mix and pump 40 sx class B cement and pump down 2-7/8" casing. Displace cement to 850' (Squeeze 35 sx outside casing and leave 5 sx inside casing). WOC. RIH with wireline and tag plug.
7. **Plug #4 (Surface, 175' - Surface):** Perforate 2 holes @ 175'. Establish circulation out bradenhead. Mix approximately 47 sx class B cement and pump down 2-7/8" casing. Circulated good cement out bradenhead valve. Shut in well. WOC.
8. ND BOP and cut off wellhead below surface casing flange. Install P&A marker to comply with regulations. RD, MOL, cut off anchors, and restore location.

Recommended:


Operations Engineer

Approval:

Production Superintendent

San Juan 27-5 Unit #157

Current

Tapacito Picture 1 Cliffs

SE Section 24, T-27-N, R-5-W R 5 Arriba Co. NM

Latitude/Longitude: 36.55424 ; 107.305405

Todays Date: 03-12-96

Spud: 6-27-73

Completed: 10-19-73

12-1/4" Hole

8-5/8", 24.0#, K-55, 8rd, Csg @ 125',
Cmt w/107 cf (Circulated to surface)

Nacimiento @ 900'

Ojo Alamo @ 2643'

Kirtland @ 3062'

TOC @ 3020' (TS)

Fruitland @ 3233'

CIBP @ 3300' (12-16-94)

Pictured Cliffs @ 3426'

Pictured Cliffs Perforations:
3428' - 3484', Total 60 holes

6-3/4" Hole

PBTD 3617'

TD 3628'

2-7/8", 6.4#, K-55, 10rd, Csg @ 3628',
Cmt w/240 cf

San Juan 27-5 Unit #157

Proposed

Tapacito Pictured Cliffs

SE Section 24, T-27-N, R-5-W R o Arriba Co. NM

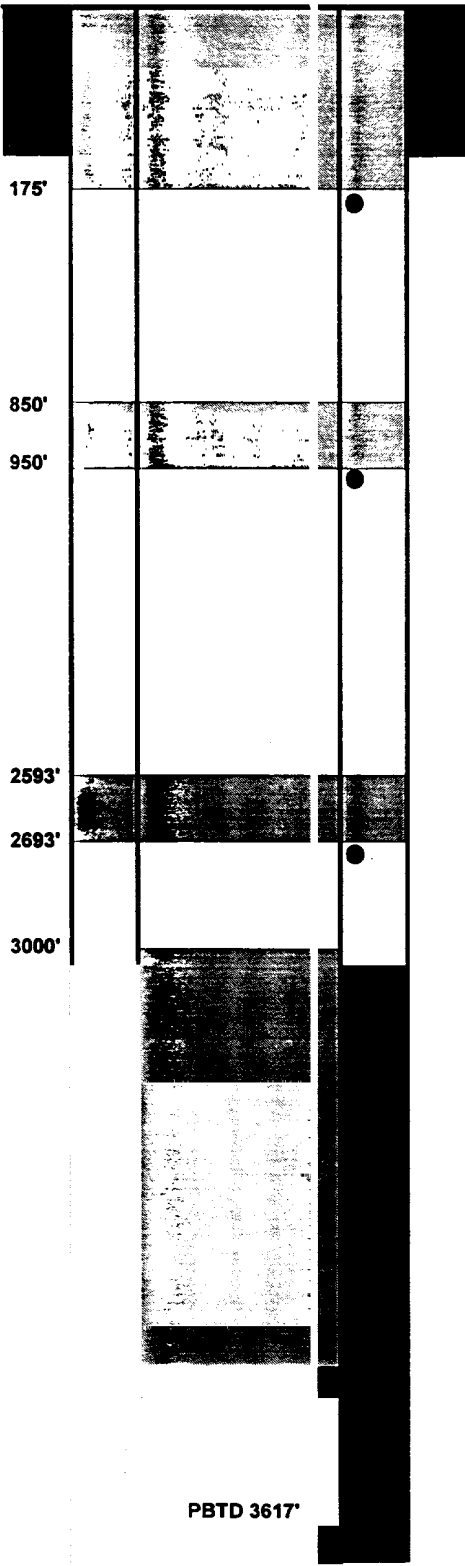
Latitude/Longitude: 36.554245 / 107.305405

Today's Date: 03-12-96

Spud: 6-27-73

Completed: 10-19-73

12-1/4" Hole



Plug #4: 175' - Surface,
Cmt w/47 sx Class B Cmt

8-5/8", 24.0#, K-55, 8rd, Csg @ 125',
Cmt w/107 cf (Circulated to surface)

Perforate @ 175'

Plug #3: 950' - 850',
Cmt w/40 sx Class B Cmt,
35 sx cmt outside csg and 5 sx
inside csg

Perforate @ 950'

Plug #2: 2693' - 2593',
Cmt w/40 sx Class B Cmt,
sqz 35 sx cmt outside csg and
leave 5 sx inside csg

Perforate @ 2693'

TOC @ 3020' (TS)

Plug #1: 3300' - 3000',
Cmt w/10 sx Class B Cmt

CIBP @ 3300' (12-16-94)

Pictured Cliffs Perforations:
3428' - 3484', Total 60 holes

2-7/8", 6.4#, K-55, 10rd, Csg @ 3628',
Cmt w/240 cf

Nacimiento @ 900'

Ojo Alamo @ 2643'

Kirtland @ 3062'

Fruitland @ 3233'

Pictured Cliffs @ 3426'

6-3/4" Hole

PBDT 3617'

TD 3628'