

El Paso Natural Gas Company

El Paso, Texas 79978

August 6, 1973

ADDRESS REPLY TO
POST OFFICE BOX 980
FARMINGTON, NEW MEXICO 87401

Mr. Jerry Long
U. S. Geological Survey
Post Office Box 1809
Durango, Colorado 81301

Re: Application for Permit to Drill
Rincon Unit #202
NENE/4 Section 27, T-27-N, R-7-W
Basin Dakota

Dear Mr. Long:

Details regarding existing roads, pipelines, wells, etc. relative to the above well location are included on the previously submitted base maps, "Field Road Map" and "Composite Map No. 1".

The proposed new well location, new roads and new pipeline are shown on the attached plat along with connecting existing roads and pipelines in the vicinity of the proposed new well.

Water for drilling and completion operations will be obtained from a water well located in Section 3, T-26-N, R-6-W. Waste material will be disposed of burial in the burn pit, latrine, or reserve pit as applicable. There will be no camp nor air strip associated with drilling this well. Upon completion or abandonment of this well, the location will be cleaned and leveled and a dry hole marker placed, if applicable.

Yours truly,



D. G. Brisco
Drilling Clerk

pb

RECEIVED

AUG 8 1973

U. S. GEOLOGICAL SURVEY
DURANGO, COLO.



30-039-20737

Form 9-331C
(May 1963)

SUBMIT IN TRIPLICATE*

(Other instructions on
reverse side)Form approved.
Budget Bureau No. 42-R1425.UNITED STATES
DEPARTMENT OF THE INTERIOR
GEOLOGICAL SURVEY

APPLICATION FOR PERMIT TO DRILL, DEEPEN, OR PLUG BACK

1a. TYPE OF WORK

DRILL ☒DEEPEN ☐PLUG BACK ☐

b. TYPE OF WELL

OIL
WELL ☐GAS
WELL ☒

OTHER

SINGLE
ZONE ☒MULTIPLE
ZONE ☐

2. NAME OF OPERATOR

El Paso Natural Gas Company

3. ADDRESS OF OPERATOR

PO Box 990, Farmington, NM 87401

4. LOCATION OF WELL (Report location clearly and in accordance with any State requirements.)*

At surface

800'N, 800'E

At proposed prod. zone

14. DISTANCE IN MILES AND DIRECTION FROM NEAREST TOWN OR POST OFFICE*

15. DISTANCE FROM PROPOSED*

LOCATION TO NEAREST
PROPERTY OR LEASE LINE, FT.
(Also to nearest drlg. unit line, if any)

16. NO. OF ACRES IN LEASE

17. NO. OF ACRES ASSIGNED
TO THIS WELL

320

18. DISTANCE FROM PROPOSED LOCATION*
TO NEAREST WELL, DRILLING, COMPLETED,
OR APPLIED FOR, ON THIS LEASE, FT.

19. PROPOSED DEPTH

7649'

20. ROTARY OR CABLE TOOLS

Rotary

21. ELEVATIONS (Show whether DF, RT, GR, etc.)

6695'GR

22. APPROX. DATE WORK WILL START*

23.

PROPOSED CASING AND CEMENTING PROGRAM

SIZE OF HOLE	SIZE OF CASING	WEIGHT PER FOOT	SETTING DEPTH	QUANTITY OF CEMENT
13 3/4"	9 5/8"	32.3#	200'	220 cu.ft. to circ. to surface
8 3/4" & 7 7/8"	4 1/2"	10.5# & 11.6#	7649'	1245 cu.ft. - 3 stages

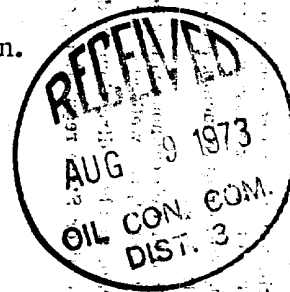
Stage #1 - 320 cu. ft. to cover Gallup formation.

Stage #2 - 390 cu. ft. to cover Mesa Verde formation.

Stage #3 - 535 cu. ft. to cover Ojo Alamo formation.

Selectively perforate and sandwater fracture the Dakota formation.

The E/2 of Section 27 is dedicated to this well.



IN ABOVE SPACE DESCRIBE PROPOSED PROGRAM: If proposal is to deepen or plug back, give data on present productive zone and proposed new productive zone. If proposal is to drill or deepen directionally, give pertinent data on subsurface locations and measured and true vertical depths. Give blowout preventer program, if any.

24.

SIGNED

A. G. Dices

TITLE

Drilling Clerk

DATE August 6, 1973

(This space for Federal or State office use)

PERMIT NO.

APPROVAL DATE

APPROVED BY

TITLE

CONDITIONS OF APPROVAL, IF ANY:



AUG 8 1973

U. S. GEOLOGICAL SURVEY
DENVER, COLO.

*See Instructions On Reverse Side

NEW MEXICO OIL CONSERVATION COMMISSION
WELL LOCATION AND ACREAGE DEDICATION PLAT

Supersedes CG-28
1-11-70 (2-73)

All distances must be from the corner by a series of lines.

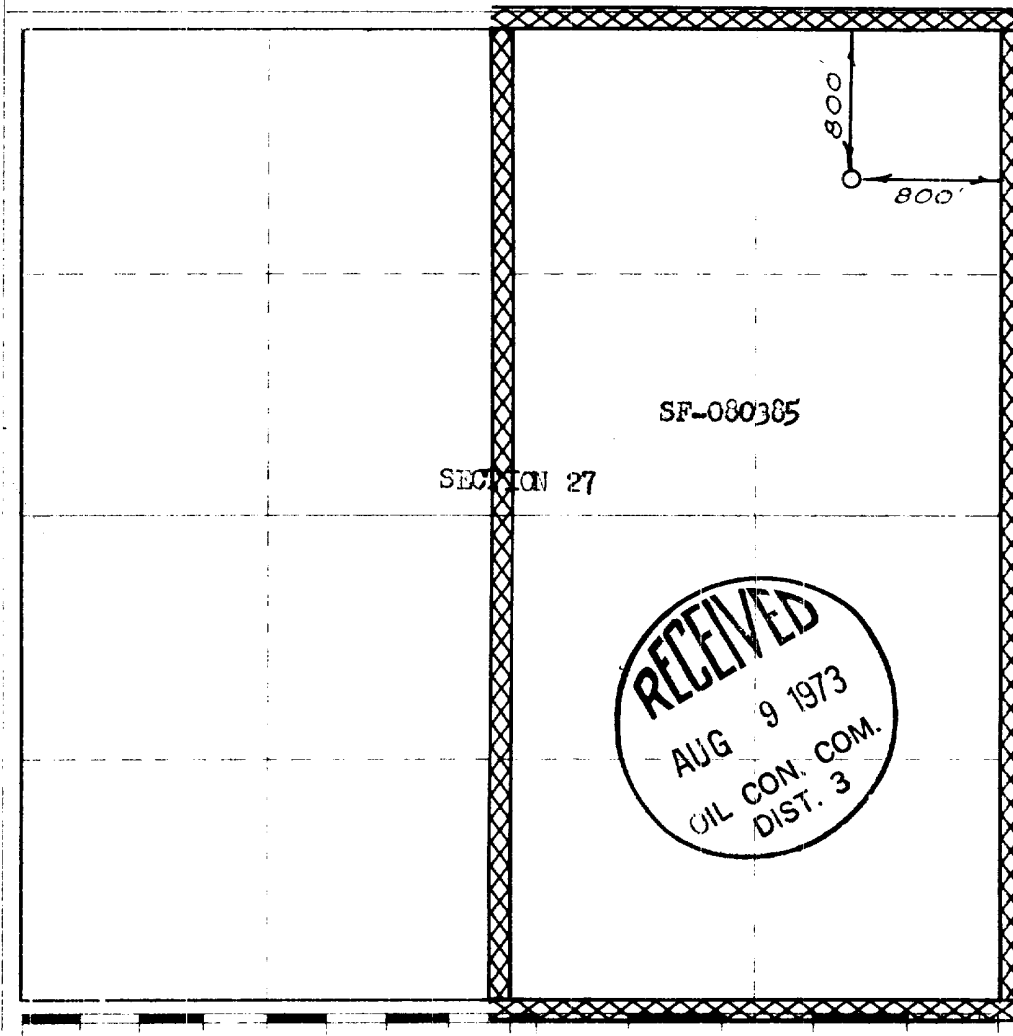
EL PASO NATURAL GAS COMPANY		RINCON UNIT		(SF-080385)	202
A	27	27-N	7-W	RIO ARriba	
800	NORTH	800	EAST		
6695	DAKOTA	BASIN DAKOTA		320.00	

1. Outline the acreage dedicated to the subject well by colored pencil or hatchure marks on the plat below.
2. If more than one lease is dedicated to the well, outline each and identify the ownership thereof (both as to working interest and royalty).
3. If more than one lease of different ownership is dedicated to the well, have the interests of all owners been consolidated by communitization, unitization, force-pooling, etc?

☒ Yes ☐ No If answer is "yes," type of consolidation Unitization

If answer is "no," list the owners and tract descriptions which have actually been consolidated. (Use reverse side of this form if necessary)

No allowable will be assigned to the well until all interests have been consolidated (by communitization, unitization, forced-pooling, or otherwise) or until a non-standard unit, eliminating such interests, has been approved by the Commission.



CERTIFICATION

I hereby certify that the information contained herein is true and complete to the best of my knowledge and belief.

Original Signed by
D. G. Brisco

Drilling Clerk

El Paso Natural Gas Co.

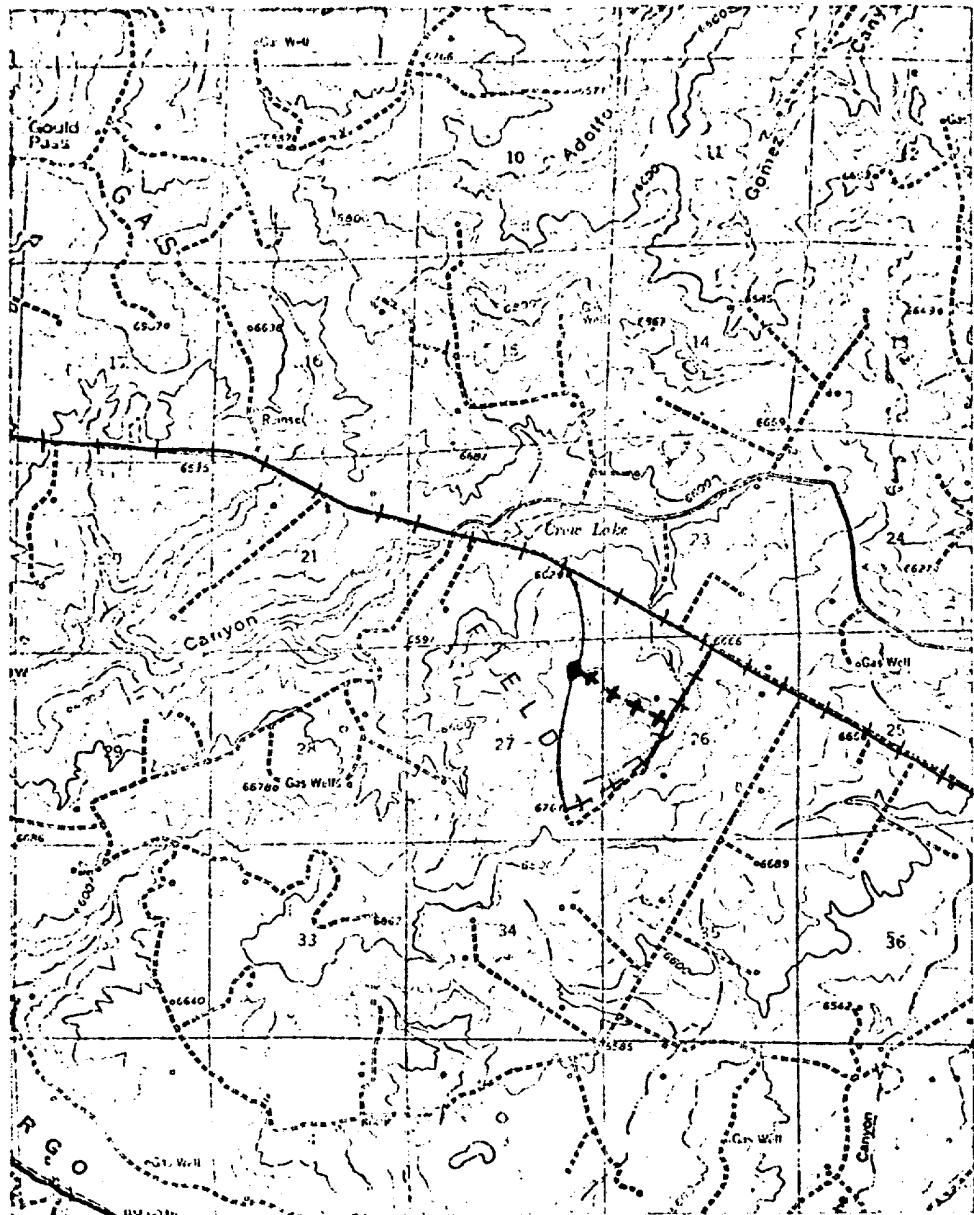
August 7, 1973

I hereby certify that the well location shown on this plat was plotted from field notes of actual surveys made by me or under my supervision, and that the same is true and correct to the best of my knowledge and belief.

FEBRUARY 27, 1973

Paul Wilver
1760

Rincon Unit No. 202
NE 1/4 Sec 27, T-27N, R-7W



T
27
N

R-7-W-

LEGEND OF RIGHT-OF-WAYS

EXISTING ROADS	—————
EXISTING PIPELINES	+++++
EXISTING ROAD & PIPELINE	+++++
Proposed ROADS	—————
PROPOSED PIPELINES	+++++
PROPOSED ROAD & PIPELINE	+++++

Rincon Unit No. 202

