

UNITED STATES
DEPARTMENT OF THE INTERIOR
BUREAU OF LAND MANAGEMENT

Sundry Notices and Reports on Wells

1. Type of Well
GAS

2. Name of Operator

**BURLINGTON
RESOURCES**

OIL & GAS COMPANY

3. Address & Phone No. of Operator

PO Box 4289, Farmington, NM 87499 (505) 326-9700

4. Location of Well, Footage, Sec., T, R, M

1000' FSL, 1760' FEL, Sec. 24, T-27-N, R-4-W, NMPM

5. Lease Number
NMSF-080672

6. If Indian, All. or
Tribe Name

7. Unit Agreement Name

San Juan 27-4 Unit
8. Well Name & Number
San Juan 27-4 U #80

9. API Well No.
30-039-20822

10. Field and Pool
Tapacito Pict Cliffs

11. County and State
Rio Arriba Co, NM

12. CHECK APPROPRIATE BOX TO INDICATE NATURE OF NOTICE, REPORT, OTHER DATA

Type of Submission

Type of Action

☒ Notice of Intent

☒ Abandonment

☐ Change of Plans

☐ Subsequent Report

☐ Recompletion

☐ New Construction

☐ Final Abandonment

☐ Plugging Back

☐ Non-Routine Fracturing

☐ Casing Repair

☐ Water Shut off

☐ Altering Casing

☐ Conversion to Injection

☐ Other -

13. Describe Proposed or Completed Operations

It is intended to plug and abandon the subject well according to the attached procedure and wellbore diagram.

14. I hereby certify that the foregoing is true and correct.

Signed [Signature] (MR9) Title Regulatory Supervisor Date 5/7/02
no

(This space for Federal or State Office use)

APPROVED BY _____ Title _____ Date 6/19/02
CONDITION OF APPROVAL, if any:

Plug and Abandonment Procedure 4/9/02
San Juan 27-4 Unit #80
Tapacito Pictured Cliffs
1000' FSL, 1760' FEL
Unit O, Section 24, T-27-N, R-4-W
Latitude / Longitude: 36° 33.2538' / -107° 11.9652'
AIN: 4498301

Note: All cement volumes use 100% excess outside pipe and 50' excess inside pipe. The stabilizing wellbore fluid will be 8.3 ppg, sufficient to balance all exposed formation pressures. All cement will be ASTM Type II, mixed at 15.6 ppg with a 1.18 cf/sx yield.

1. Install and test location rig anchors. Prepare blow pit. Comply with all NMOCD, BLM, and Burlington safety regulations. MOL and RU daylight pulling unit. Conduct safety meeting for all personnel on location. NU relief line and blow down well; kill with water as necessary. ND wellhead and NU BOP. Test BOP.
2. Prepare and tally 1-1/4" tubing workstring. Round-trip 2-7/8" wireline gauge ring to 4072'.
3. **Plug #1 (Pictured Cliffs perforations and top, 4072' – 3972')**: Set a 2-7/8" wireline CIBP at 4072'. TIH with open ended tubing and tag CIBP. Load casing with water and circulate well clean. Pressure test casing to 500#. If casing does not test, then spot or tag subsequent plugs as necessary. Mix 5 sxs cement and spot a balanced plug inside casing above the CIBP to isolate the Pictured Cliffs perforations. PUH to 3960' and reverse circulate well clean. TOH with tubing.
4. **Plug #2 (Fruitland, Kirtland and Ojo Alamo tops, 3955' – 3510')**: Perforate 3 bi-wire squeeze holes at 3955'. Attempt to establish rate into squeeze holes if the casing pressure tested. If the casing tested, then mix 170 sxs cement and pump down the 2-7/8" casing, squeeze 153 sxs outside the casing, displace to 3000'. WOC and tag cement. If the casing did not test, then set a 2-7/8" wireline cement retainer at 3905'. TIH with tubing and establish rate into squeeze holes. Mix and pump 167 sxs cement, squeeze 153 sxs cement outside 2-7/8" casing and leave 14 sxs cement inside casing to cover the Fruitland, Kirtland and Ojo Alamo tops. TOH with tubing.
5. **Plug #3 (Nacimiento top, 1690' – 1590')**: Perforate 3 bi-wire squeeze holes at 1690'. If the casing tested then establish rate into squeeze holes. Mix and pump 40 sxs cement down the 2-7/8" casing, squeeze 35 sxs cement outside the casing and leave 5 sxs cement inside casing to cover Nacimiento top. If the casing did not pressure test then set a 2-7/8" wireline cement retainer at 1640'. TIH with tubing and establish rate into squeeze holes, cement as above. TOH and LD tubing.
7. **Plug #4 (8-5/8" Surface casing, 177' - Surface)**: Perforate 2 bi-wire squeeze holes at 177'. Establish circulation out the bradenhead valve with water. Mix and pump approximately 75 sxs cement down 2-7/8" casing to circulate good cement out bradenhead valve. Shut well in and WOC.
8. ND BOP and cut off casing below surface. Install P&A marker with cement to comply with regulations. RD, move off location, cut off anchors and restore location.

Recommended:

Matt Roberts 05/07/2002
Operations Engineer

Approved:

Bruce W. Boyer 5.3.02
Drilling Manager

Matt Roberts

Office - (599-4098)
Cell - (320-2739)

Sundry Required:

YES

NO

Approved: *[Signature]*

Lease Operator: Rob Gay
Specialist: Richard Lopez
Foreman: Ward Arnold

Cell: 320-1200 Pager: 326-8837
Cell: 320-6573 Pager: 326-8681
Cell: 320-1689 Pager: 326-8303

San Juan 27-4 Unit #80

Proposed P&A

AIN #4498301

Tapacito Pictured Cliffs

SE, Section 24, T-27-N, R-4-W, Rio Arriba County, NM

API # 30-039-20822

Long: 36° 33.3 / Lat: -107° 12.05

Today's Date: 4/9/02

Spud: 9/18/74

Completed: 12/5/74

Elevation: 7299' GL

12-1/4" hole

Nacimiento @ 1640'

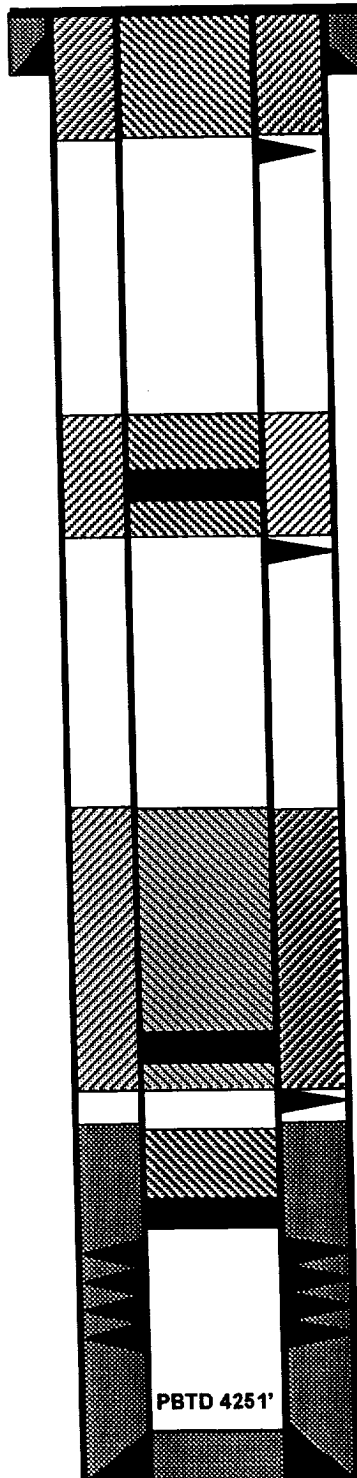
Ojo Alamo @ 3560'

Kirtland @ 3780'

Fruitland @ 3905'

Pictured Cliffs @ 4120'

6-3/4" hole



8-5/8" 24#, J-55 Casing set @ 127'
Cemented with 118 cf (Circulated to Surface)

Perforate @ 177'

Plug #4 177' - Surface
Cement with 75 sxs

Plug #3 1690' - 1590'
Cement with 40 sxs,
35 outside casing
and 5 sxs inside.

Perforate @ 1690'

Plug #2 3955' - 3510'
Cement with 170 sxs,
153 sxs outside casing
and 17 sxs inside.

Perforate @ 3955'

TOC @ 3975' (T.S.)

Set CR at 4072'

Pictured Cliffs Perforations:
4122' - 4206'

Plug #1 4072' - 3972'
Cement with 5 sxs

2-7/8" 6.4# J-55 Casing set @ 4262'
Cement with 301 cf

TD 4262'