

MEXICO OIL CONSERVATION COMMISSION
WELL LOCATION AND ACREAGE DEDICATION PLAT

Form C-102
Supersedes C-128
Effective 1-1-65

All distances must be from the outer boundaries of the Section.

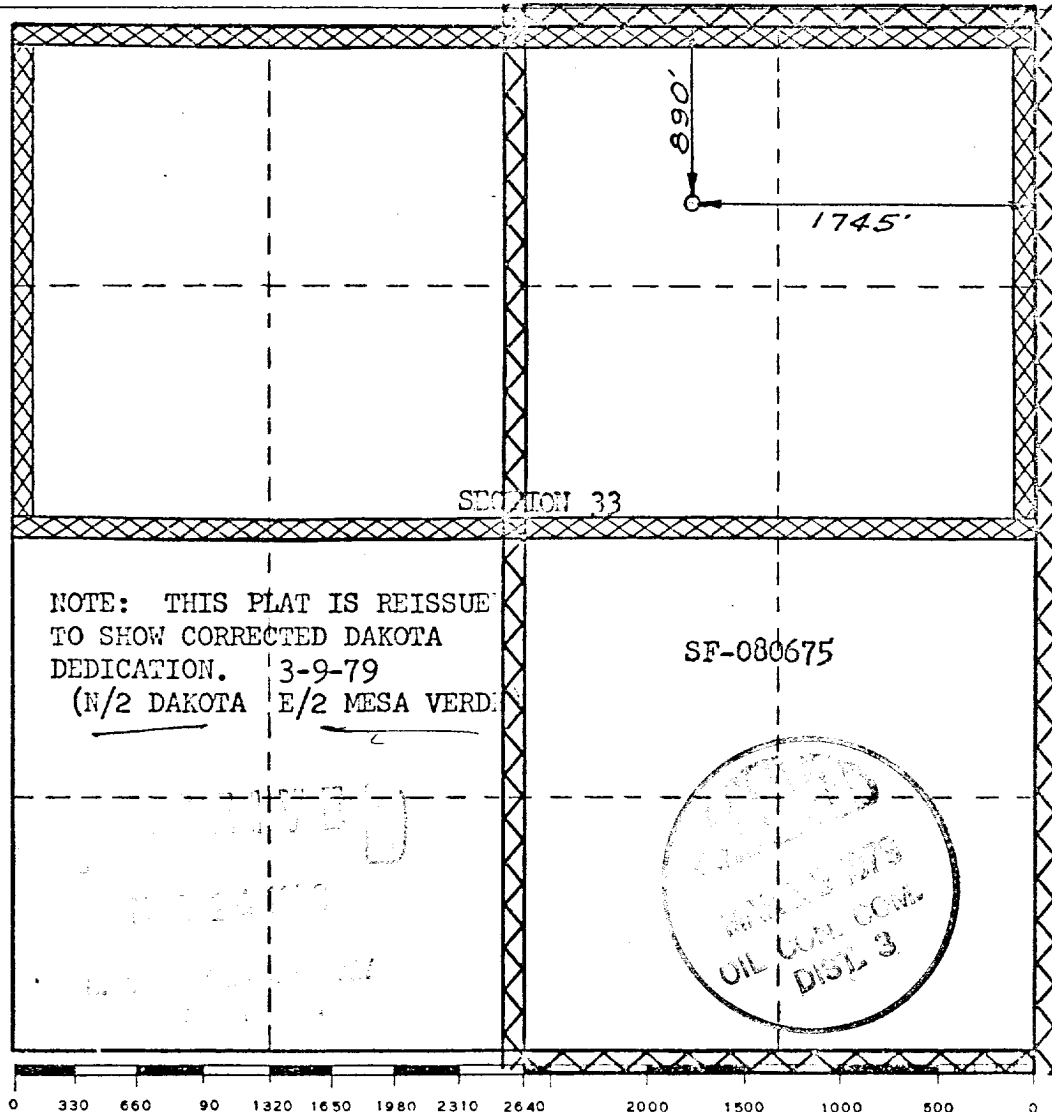
Operator EL PASO NATURAL GAS COMPANY		Lease SAN JUAN 27-4 UNIT (SF-080675)		Well No. 102
Unit Letter B	Section 33	Township 27-N	Range 4-W	County RIO ARriba
Actual Footage Location of Well: 890 feet from the NORTH line and 1745 feet from the EAST line				
Ground Level Elev. 7187	Producing Formation DAKOTA & MESA VERDE	Pool BASIN DAKOTA - BLANCO MESA VERDE	Dedicated Acreage: 320.00 - 320.00 Acres	

1. Outline the acreage dedicated to the subject well by colored pencil or hachure marks on the plat below.
2. If more than one lease is dedicated to the well, outline each and identify the ownership thereof (both as to working interest and royalty).
3. If more than one lease of different ownership is dedicated to the well, have the interests of all owners been consolidated by communitization, unitization, force-pooling, etc?

☒ Yes ☐ No If answer is "yes," type of consolidation Unitization

If answer is "no," list the owners and tract descriptions which have actually been consolidated. (Use reverse side of this form if necessary.) _____

No allowable will be assigned to the well until all interests have been consolidated (by communitization, unitization, forced-pooling, or otherwise) or until a non-standard unit, eliminating such interests, has been approved by the Commission. NOTE: THIS PLAT IS REISSUED TO SHOW DUAL DEDICATION. 6-29-78



CERTIFICATION	
I hereby certify that the information contained herein is true and complete to the best of my knowledge and belief.	
Name	<i>A. D. Guises</i>
Position	Drilling Clerk
Company	El Paso Natural Gas Co.
Date	March 12, 1979
I hereby certify that the well location shown on this plat was plotted from field notes of actual surveys made by me or under my supervision, and that the same is true and correct to the best of my knowledge and belief.	
Date Surveyed	SEPTEMBER 25, 1968
Registered Professional Engineer and/or Land Surveyor	<i>[Signature]</i>
Certificate No.	1760