

UNITED STATES
DEPARTMENT OF THE INTERIOR
GEOLOGICAL SURVEY

APPLICATION FOR PERMIT TO DRILL, DEEPEN, OR PLUG BACK

1a. TYPE OF WORK

DRILL ☒DEEPEN ☐PLUG BACK ☐

b. TYPE OF WELL

OIL
WELL ☐GAS
WELL ☒

OTHER

SINGLE
ZONE ☒MULTIPLE
ZONE ☐

2. NAME OF OPERATOR

El Paso Natural Gas Company

3. ADDRESS OF OPERATOR

PO Box 990, Farmington, NM 87401

4. LOCATION OF WELL (Report location clearly and in accordance with any State requirements.*)

At surface

1840'S, 1115'W

At proposed prod. zone

14. DISTANCE IN MILES AND DIRECTION FROM NEAREST TOWN OR POST OFFICE*

15. DISTANCE FROM PROPOSED*

LOCATION TO NEAREST
PROPERTY OR LEASE LINE, FT.
(Also to nearest drig. unit line, if any)

16. NO. OF ACRES IN LEASE

17. NO. OF ACRES ASSIGNED
TO THIS WELL

160.00

18. DISTANCE FROM PROPOSED LOCATION*
TO NEAREST WELL, DRILLING, COMPLETED,
OR APPLIED FOR, ON THIS LEASE, FT.

19. PROPOSED DEPTH

3845'

20. ROTARY OR CABLE TOOLS

Rotary

21. ELEVATIONS (Show whether DF, RT, GR, etc.)

6791'GR

22. APPROX. DATE WORK WILL START*

23.

PROPOSED CASING AND CEMENTING PROGRAM

SIZE OF HOLE	SIZE OF CASING	WEIGHT PER FOOT	SETTING DEPTH	QUANTITY OF CEMENT
12 1/4"	8 5/8"	24.0#	120'	106 cu. ft. to circulate to surface
6 3/4"	2 7/8"	6.4#	3845'	233 cu. ft. to cover Ojo Alamo

Selectively perforate and sandwater fracture the Pictured Cliffs formation.

Forest approval has been secured.

The SW/4 of Section 21 is dedicated to this well.



IN ABOVE SPACE DESCRIBE PROPOSED PROGRAM: If proposal is to deepen or plug back, give data on present productive zone and proposed new productive zone. If proposal is to drill or deepen directionally, give pertinent data on subsurface locations and measured and true vertical depths. Give blowout preventer program, if any.

24.

SIGNED

A. J. Duice

TITLE

Drilling Clerk

DATE June 26, 1974

(This space for Federal or State office use)

PERMIT NO.

APPROVAL DATE

APPROVED BY

TITLE

DATE

CONDITIONS OF APPROVAL, IF ANY:

*See Instructions On Reverse Side

**NEW MEXICO OIL CONSERVATION COMMISSION
WELL LOCATION AND ACREAGE DEDICATION PLAT**

Form C-102
Supersedes C-128
Effective 1-1-65

All distances must be from the outer boundaries of the Section.

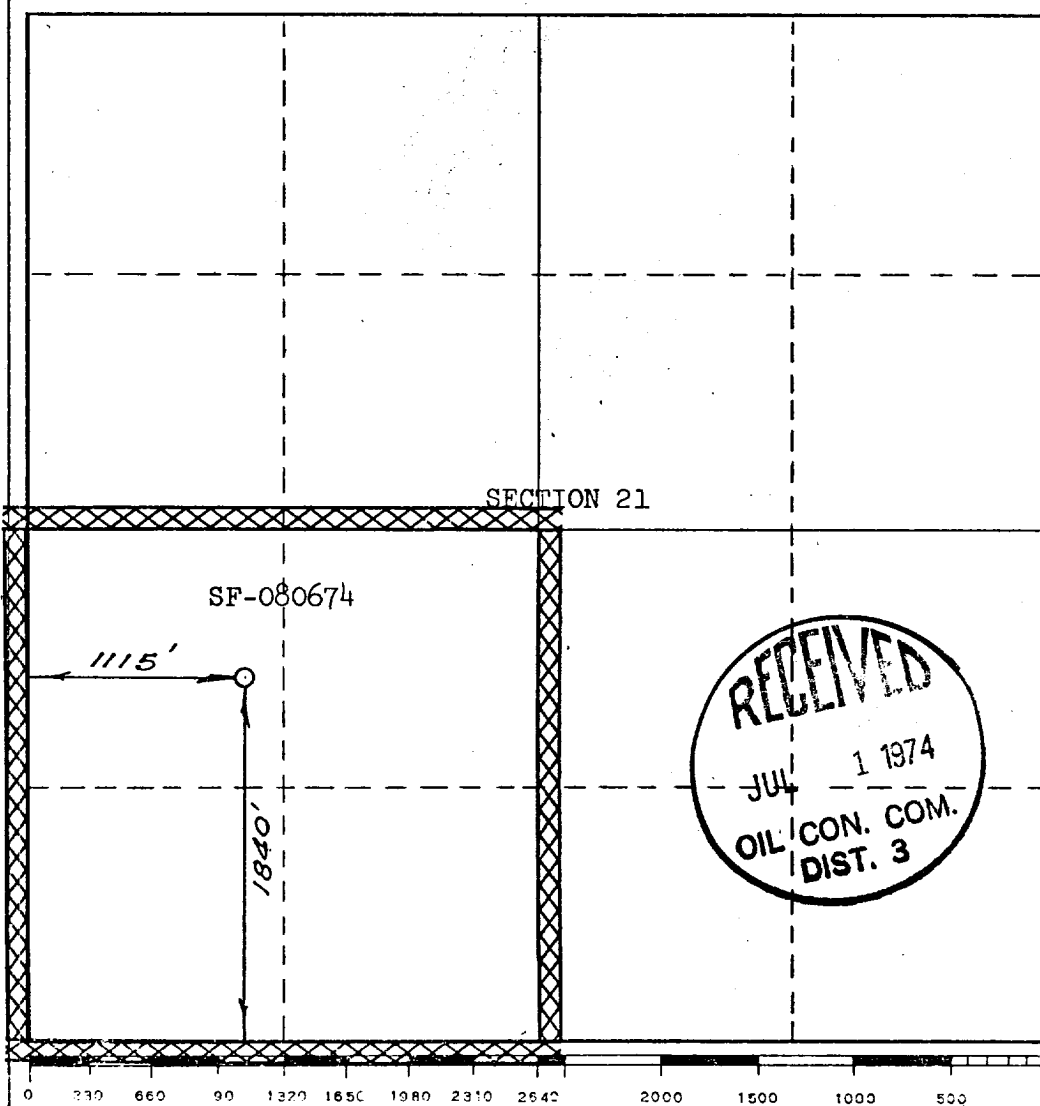
Operator EL PASO NATURAL GAS COMPANY			Lease SAN JUAN 27-4 UNIT (SF-080674)		Well No. 78
Unit Letter L	Section 21	Township 27-N	Range 4-W	County RIO ARriba	
Actual Footage Location of Well: 1840 feet from the SOUTH line and 1115 feet from the WEST line					
Ground Level Elev. 6791	Producing Formation PICTURED CLIFFS	Pool TAPACITO PICTURED CLIFFS EXT		Dedicated Acreage: 160.00 Acres	

1. Outline the acreage dedicated to the subject well by colored pencil or hachure marks on the plat below.
2. If more than one lease is dedicated to the well, outline each and identify the ownership thereof (both as to working interest and royalty).
3. If more than one lease of different ownership is dedicated to the well, have the interests of all owners been consolidated by communitization, unitization, force-pooling, etc?

☐ Yes ☐ No If answer is "yes," type of consolidation Unitization

If answer is "no," list the owners and tract descriptions which have actually been consolidated. (Use reverse side of this form if necessary.) _____

No allowable will be assigned to the well until all interests have been consolidated (by communitization, unitization, forced-pooling, or otherwise) or until a non-standard unit, eliminating such interests, has been approved by the Commission.



CERTIFICATION

I hereby certify that the information contained herein is true and complete to the best of my knowledge and belief.

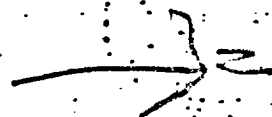
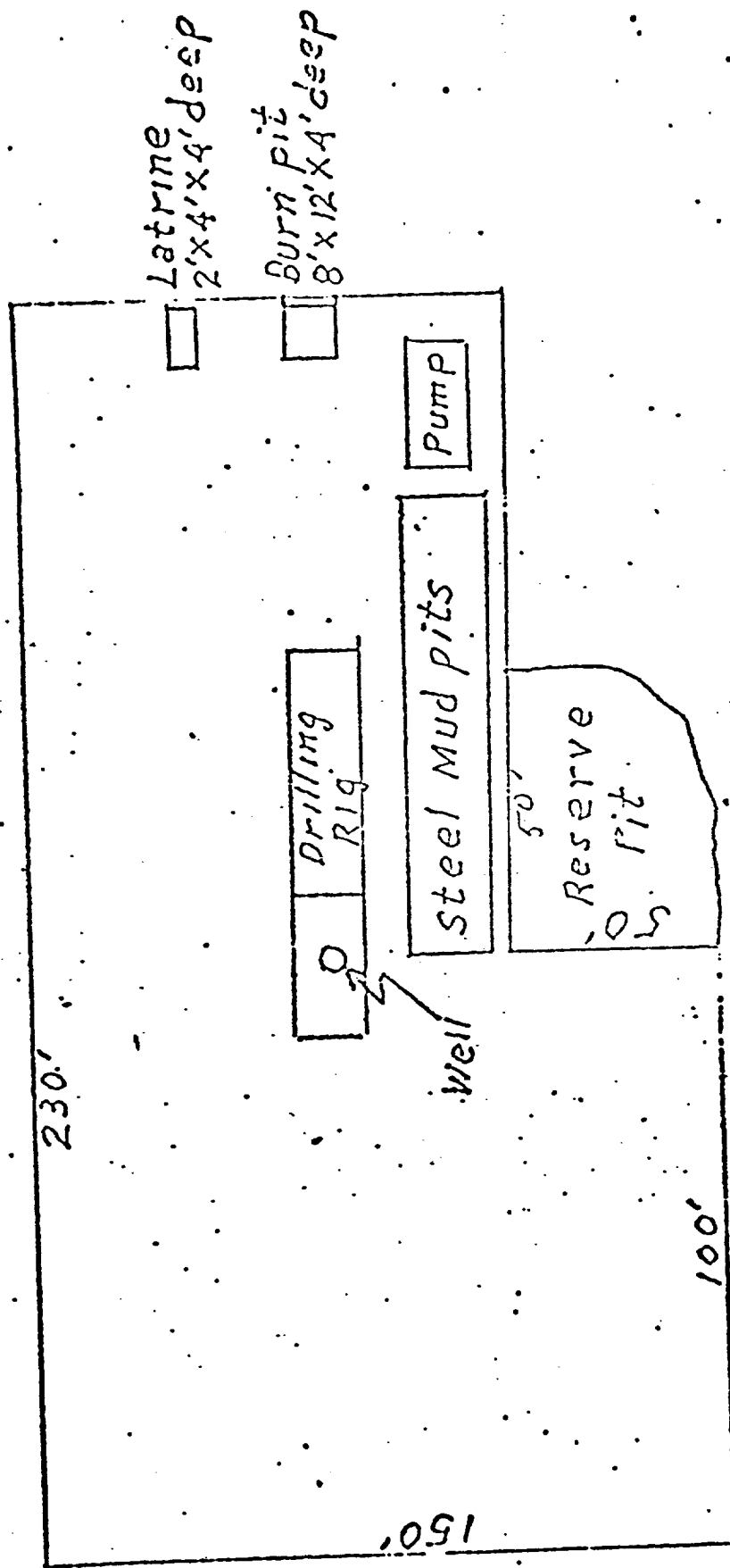
Original Signed by
 Name **D. G. Brisco**
 Position **El Paso Natural Gas Co.**
 Company **El Paso Natural Gas Co.**
 Date **June 20, 1974**

I hereby certify that the well location shown on this plat was plotted from field notes of actual surveys made by me or under my supervision, and that the same is true and correct to the best of my knowledge and belief.

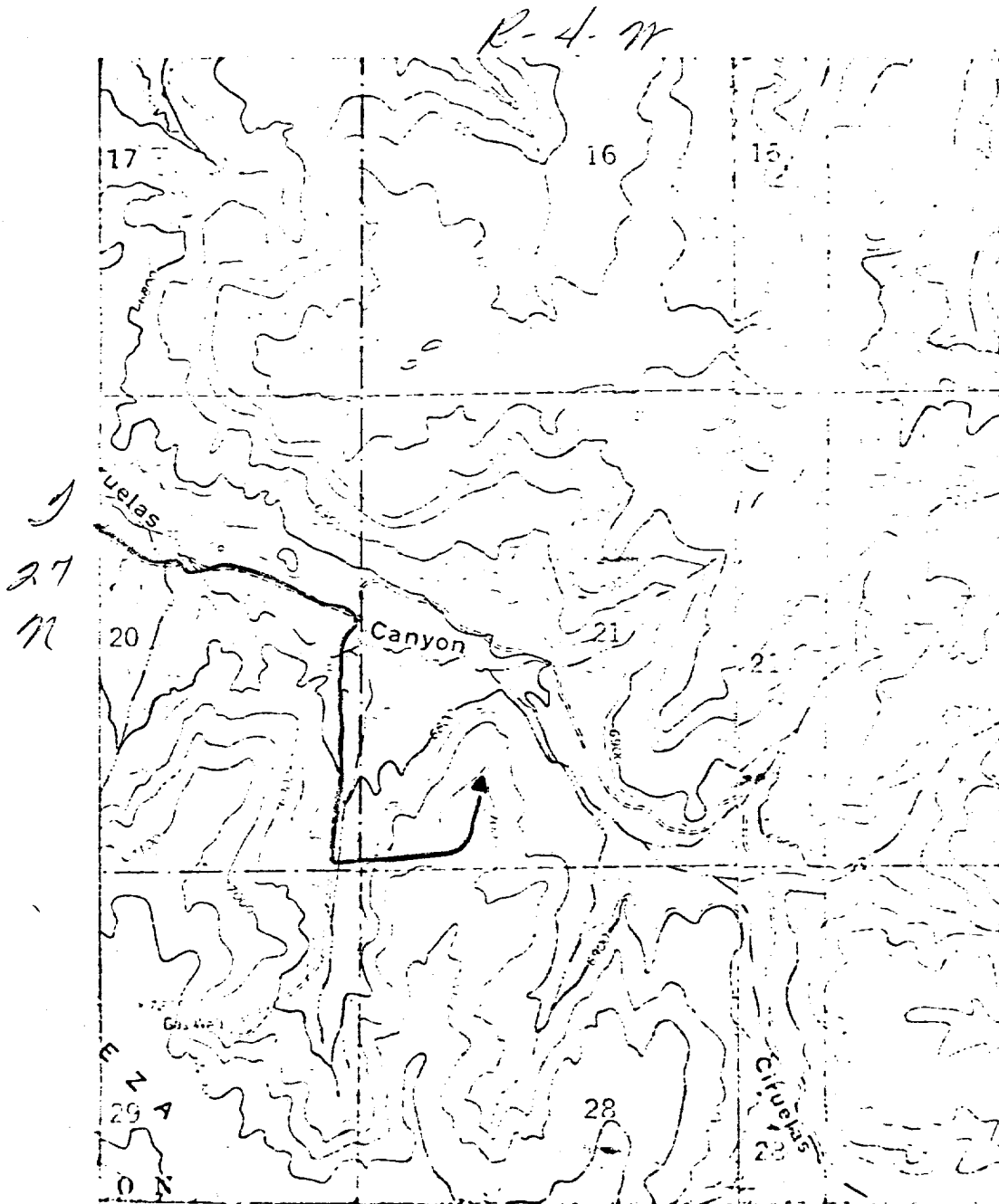
Date Surveyed
APRIL 10, 1974
 Registered Professional Engineer
 and/or Land Surveyor
David O. Kuen
 Certificate No. **1760**

LOCATION AND EQUIPMENT LAY-OUT

SAN Juan 27-4 UNIT # 78



San Juan 27-4 Unit # 78
 SW 21, 27-11, R-4-W



LEGEND OF RIGHT-OF-WAYS

EXISTING ROADS	— — — — —
EXISTING PIPELINES	+ + + + +
EXISTING ROAD & PIPELINE	+ + + + +
PROPOSED ROADS	— — — — —
PROPOSED PIPELINES	+ + + + +
PROPOSED ROAD & PIPELINE	+ + + + +